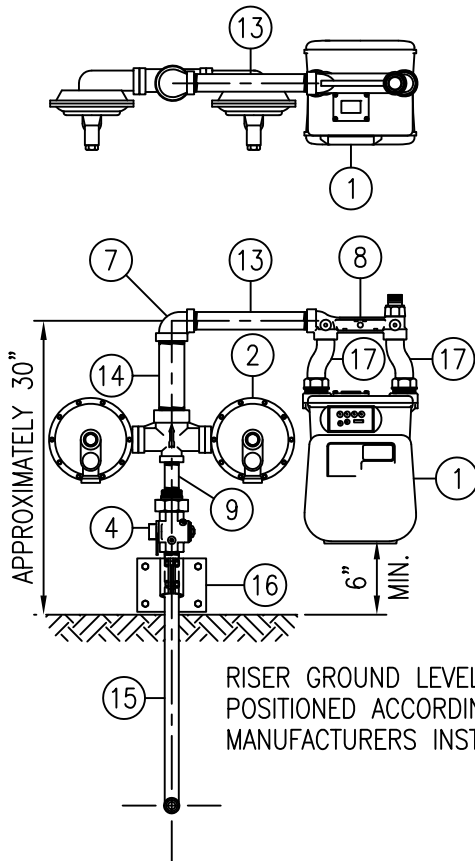


2' MINIMUM BENDING RADIUS FROM LEVEL OF BENDING POINT FOR FLEXIBLE RISER.

SETTING A WITH STANDARD REGULATOR



SETTING B WITH 1" X 2" REGULATOR

RISER GROUND LEVEL TO BE POSITIONED ACCORDING TO THE MANUFACTURERS INSTRUCTIONS.

THE STANDARD DRAWING DEPICTED HERE HAS BEEN DESIGNED IN ACCORDANCE WITH USDOT PIPELINE SAFETY STANDARDS SET FORTH AT 49 CFR PART 192, AND THE REQUIREMENTS OF NFPA 54. DEVIATION FROM THIS DRAWING, EITHER IN MATERIALS OR SPECIFICATIONS, WITHOUT THE WRITTEN APPROVAL OF THE NISOURCE INC. DESIGN ENGINEER IS NOT AUTHORIZED, AND NISOURCE, INC. WILL NOT BE HELD ACCOUNTABLE FOR THE IMPROPER OPERATION OF THE FACILITY. A QUALIFIED PLUMBER, OTHER INSTALLER OR THE MANUFACTURER SHOULD BE CONSULTED FOR PROPER INSTALLATION AND/OR TESTING OF THIS FACILITY, AND NEITHER NISOURCE, INC. NOR ANY AFFILIATE OR SUBSIDIARY OF NISOURCE, INC. SHALL BE RESPONSIBLE FOR THE INSTALLATION AND/OR TESTING OF THE FACILITY.

Note:

IN KENTUCKY, THE COMPANY WILL INSTALL THE RISER

DRAWING TITLE
OUTSIDE METER SETTING USING 400 AND 630 CLASS METERS

NiSource™

NiSource Energy Distribution

DRAWN
CR EMERSON

DATE
03-03-03

DRAWING NO.
PLMB-0002

ISSUE NO.

CHECKED

DATE

SHEET NO.
1 of 2

3

BILL OF MATERIAL


| ITEM | SET & QTY | | SIZE | DESCRIPTION |
|------|-----------|---|--------------|--|
| | A | B | | |
| 1 | 1 | 1 | 1 1/4" | METER, DIAPHRAM, TO BE PROVIDED BY COLUMBIA GAS (METER BAR: 44-11-080) |
| 2 | | 1 | 1" X 2" | REGULATOR, INTERNAL MONITOR, TO BE PROVIDED BY COLUMBIA GAS |
| 3 | 1 | | 1 1/4" | REGULATOR, INTERNAL RELIEF, TO BE PROVIDED BY COLUMBIA GAS |
| 4 | | 1 | 1" | VALVE, METER STOP, INSULATED UNION, LOCKWING, USE ONLY APPROVED MFG. |
| 5 | 1 | | 1 1/4" | VALVE, METER STOP, INSULATED UNION, LOCKWING, USE ONLY APPROVED MFG. |
| 6 | 2 | | 1 1/4" | ELBOW, 90 DEG., THREADED, MALLEABLE IRON, STANDARD, CLASS 150 |
| 7 | | 1 | 2" X 1 1/4" | ELBOW, REDUCING, 90 DEG., THREADED, MALLEABLE IRON, STANDARD, CLASS 150 |
| 8 | 1 | 1 | 1 1/4" | METER BAR, WITH INSULATED UNION OUTLET, USE ONLY APPROVED MANUFACTURERS |
| 9 | | 1 | 1" X 4" | NIPPLE, PIPE, STEEL, GRADE B, EX. HVY., THREAD BOTH ENDS |
| 10 | 2 | | 1 1/4" X 3" | NIPPLE, PIPE, STEEL, GRADE B, THREAD BOTH ENDS |
| 11 | 1 | | 1 1/4" X 5" | NIPPLE, PIPE, STEEL, GRADE B, THREAD BOTH ENDS |
| 12 | 1 | | 1 1/4" X 8" | NIPPLE, PIPE, STEEL, GRADE B, THREAD BOTH ENDS |
| 13 | | 1 | 1 1/4" X 12" | NIPPLE, PIPE, STEEL, GRADE B, THREAD BOTH ENDS |
| 14 | | 1 | 2" X 8" | NIPPLE, PIPE, STEEL, GRADE B, THREAD BOTH ENDS |
| 15 | 1 | 1 | SEE NOTE 7 | RISER, APPROVED ANODELESS, STUB OR ENCASED OR FLEX CASING PRE-BENT STEEL |
| 16 | 1 | 1 | SEE NOTE 7 | RISER BRACKET |
| 17 | 2 | 2 | 1 1/4" | SWIVEL, METER OFFSET, MALLEABLE IRON WITH 30LT NUT |

WHEN SPECIFYING THE 2" B-34-IMR SUBSTITUTE (1) ITEM 10 & (1) ITEM 15 WITH THE FOLLOWING ITEMS

| | | | |
|----|---|---------|---|
| 1B | 1 | 1" X 2" | NIPPLE, PIPE, STEEL, GRADE B, EX. HEAVY, THREAD BOTH ENDS |
| 2B | 2 | 2" X 4" | NIPPLE, PIPE, STEEL, GRADE B, EX. HEAVY, THREAD BOTH ENDS |
| 3B | 1 | 2" X 1" | REDUCER, THREADED, MALLEABLE IRON, STANDARD, CLASS 150 |

NOTES

1. REFER TO COLUMBIA GAS STANDARDS FOR CUSTOMER SERVICE LINES, METERS, AND SERVICE REGULATORS (PLUMBER'S GUIDE) FOR PROPER METER SET INSTALLATION INSTRUCTIONS.
2. APPROVED METER SUPPORT MUST BE USED.
3. IF THE SERVICE LINE IS STEEL, CONTACT COLUMBIA GAS PERSONNEL FOR SPECIFIC INSTALLATION INSTRUCTIONS.
4. PREFABRICATED RISERS AND BRACKETS MUST BE INSTALLED AND SECURED ACCORDING TO THE MANUFACTURER'S INSTALLATION INSTRUCTIONS.
5. THE METER MUST BE INSTALLED IN A LEVEL POSITION.
6. NO SCREW FITTINGS ARE TO BE USED BELOW GROUND.
7. THESE ITEMS MUST BE APPROPRIATELY SIZED FOR THE SPECIFIC CONDITIONS.
8. WHEN MEASURING FROM A LOW PRESSURE SYSTEM, THE REGULATOR (ITEM 3) & 2 PIPE NIPPLES (ITEMS 11 & 13) ARE REPLACED WITH A SINGLE PIPE NIPPLE 13 5/8" LONG.
9. REGULATOR ASSEMBLY SET ANGLE IS 60° FOR 4" DIAPHRAGM AND 70° FOR 6" DIAPHRAGM.

| | | | |
|---------------------|------------------|--------------------------|---|
| DRAWN CR EMERSON | DATE 03-03-03 | DRAWING NO. PLMB-0002 | ISSUE NO. |
| CHECKED | DATE | SHEET NO. 2 OF 2 |  |