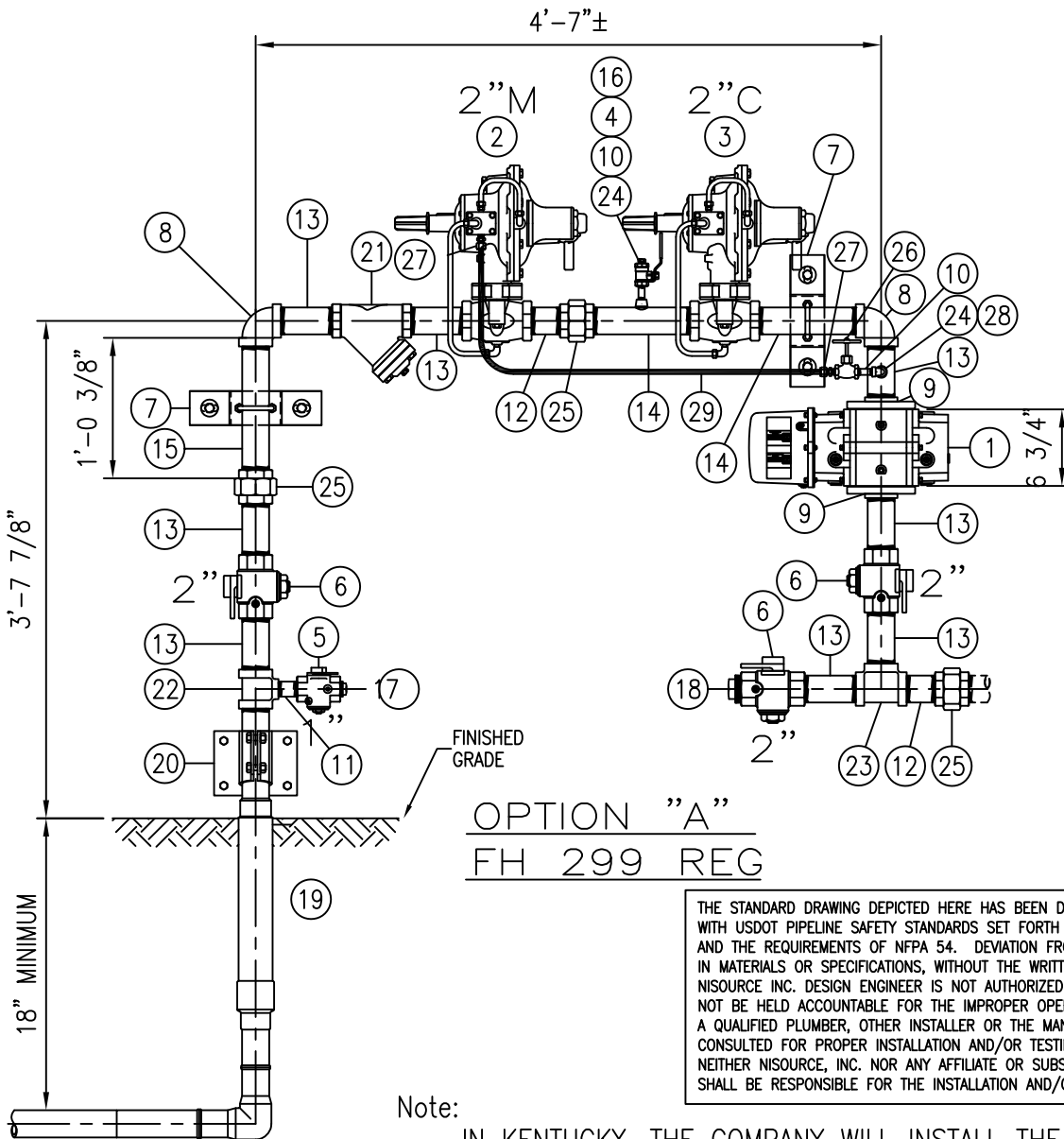


OPTION "B" FH 133L REG



OPTION "A"  
FH 299 REG

THE STANDARD DRAWING DEPICTED HERE HAS BEEN DESIGNED IN ACCORDANCE WITH USDOT PIPELINE SAFETY STANDARDS SET FORTH AT 49 CFR PART 192, AND THE REQUIREMENTS OF NFPA 54. DEVIATION FROM THIS DRAWING, EITHER IN MATERIALS OR SPECIFICATIONS, WITHOUT THE WRITTEN APPROVAL OF THE NISOURCE INC. DESIGN ENGINEER IS NOT AUTHORIZED, AND NISOURCE, INC. WILL NOT BE HELD ACCOUNTABLE FOR THE IMPROPER OPERATION OF THE FACILITY. A QUALIFIED PLUMBER, OTHER INSTALLER OR THE MANUFACTURER SHOULD BE CONSULTED FOR PROPER INSTALLATION AND/OR TESTING OF THIS FACILITY, AND NEITHER NISOURCE, INC. NOR ANY AFFILIATE OR SUBSIDIARY OF NISOURCE, INC. SHALL BE RESPONSIBLE FOR THE INSTALLATION AND/OR TESTING OF THE FACILITY.

Note:  
IN KENTUCKY, THE COMPANY WILL INSTALL THE RISER

	DRAWING TITLE			
	2" SETTING WITH 2" REGULATORS AND 2" METER			
	DRAWN CR EMERSON	DATE 05-24-03	DRAWING NO. PLMB-0010	
CHECKED	DATE	SHEET NO. 1 of 2		

ITEM	FH299 QTY.	FH133L QTY.	SIZE	BILL OF MATERIAL
1	1	1	2"	METER, ROTARY, TO BE PROVIDED BY COLUMBIA GAS
2	1	1	2"	REGULATOR, MONITOR, SCREW BODY, TO BE PROVIDED BY COLUMBIA GAS
3	1	1	2"	REGULATOR, CONTROL, SCREW BODY, TO BE PROVIDED BY COLUMBIA GAS
4	1	1	1/4"	VALVE, BALL, SCREW, CARBON STEEL, ONE PIECE BODY, 2000# W.P.
5	1	1	1"	VALVE, METER STOP, SCREWED BODY, LOCKWING, USE ONLY APPROVED MANUFACTURERS
6	3	3	2"	VALVE, METER STOP, SCREWED BODY, LOCKWING, USE ONLY APPROVED MANUFACTURERS
7	2	2	2"	BRACKET, SETTING SUPPORT, FABRICATED OR PURCHASED
8	2	2	2"	ELBOW, 90 DEG., THREADED, MALLEABLE IRON, STANDARD, CLASS 150
9	2	2	2"	FLANGE, THREADED, FLAT FACED, ANSI 150
--	8	8	5/8" X 1 3/4"	-- CAP SCREW, ASTM A-307, GRADE B, HEX. HEAD (INSTALL ON METER)
--	2	2	2"	-- GASKET, RING TYPE, 1/16" THICK, I.D.=2 3/8" X O.D.=4 1/8", ANSI 150
10	2	2	1/4" X 2"	NIPPLE, PIPE, STEEL, GRADE B, EX. HEAVY, THREAD BOTH ENDS
11	1	1	1" X 3"	NIPPLE, PIPE, STEEL, GRADE B, EX. HEAVY, THREAD BOTH ENDS
12	2	2	2" X 4"	NIPPLE, PIPE, STEEL, GRADE B, THREAD BOTH ENDS
13	8	8	2" X 6"	NIPPLE, PIPE, STEEL, GRADE B, THREAD BOTH ENDS
14	2	2	2" X 10"	NIPPLE, PIPE, STEEL, GRADE B, THREAD BOTH ENDS
15	2'	2'	2"	PIPE, P.E., STEEL, ERW, GRADE B, 0.154" WALL, CUT AND THREAD TO SUIT
16	1	1	1/4"	PLUG, STEEL, HEX HEAD, 3000#
17	1	1	1"	PLUG, SQUARE HEAD, MALLEABLE IRON, CLASS 150, DRILL FOR WIRE SEAL
18	1	1	2"	PLUG, SQUARE HEAD, MALLEABLE IRON, CLASS 150, DRILL FOR WIRE SEAL
19	1	1	2"	RISER, APPROVED ANODELESS, STUB OR ENCASED OR FLEX CASING PRE-BENT STEEL
20	1	1	2"	RISER BRACKET
21	1	1	2"	STRAINER, Y-TYPE, 250# W.P., MFG. MUELLER, TO BE PROVIDED BY COLUMBIA GAS
22	1	1	2" X 1"	TEE, REDUCING, THREADED, MALLEABLE IRON, STANDARD, CLASS 150
23	1	1	2"	TEE, THREADED, MALLEABLE IRON, STANDARD, CLASS 150
24	2	3	1/4"	THREDOLET, STEEL, 3000#
25	3	3	2"	UNION, INSULATED, MALLEABLE IRON, STANDARD, CLASS 150
26	1	2	1/4"	VALVE, NEEDLE, SCREW, CARBON STEEL
27	2		3/8" X 1/4"	CONNECTOR, MALE, 3/8" TUBE X 1/4" NPT, SWAGELOK SS-600-1-4
28	1		1/4"	ELBOW, STREET, 90 DEG., THREADED, MALLEABLE IRON, STANDARD, CLASS 150
29	5'	8'	3/8"	TUBING, SMLS OR ERW, TYPE 304 STAINLESS, ANNEALED 0.35" WALL
30		2	3/8" X 3/4"	CONNECTOR, MALE, 3/8" TUBE X 3/4" NPT, SWAGELOK SS-600-1-12
31		1	3/8" X 3/4"	CONNECTOR, MALE ELBOW, 3/8" TUBE X 3/4" NPT, SWAGELOK SS-600-2-12

### NOTES

1. REFER TO COLUMBIA GAS STANDARDS FOR CUSTOMER SERVICE LINES, METERS, AND SERVICE REGULATORS (PLUMBER'S GUIDE) FOR PROPER METER SET INSTALLATION INSTRUCTIONS.
2. APPROVED METER SUPPORT MUST BE USED.
3. IF THE SERVICE LINE IS STEEL, CONTACT COLUMBIA GAS PERSONNEL FOR SPECIFIC INSTALLATION INSTRUCTIONS.
4. PREFABRICATED RISERS AND BRACKETS MUST BE INSTALLED AND SECURED ACCORDING TO THE MANUFACTURER'S INSTALLATION INSTRUCTIONS.
5. THERE MUST BE A MINIMUM DISTANCE OF 12" BETWEEN THE SETTING AND BUILDING AND A MINIMUM OF 18" BETWEEN THE METER AND ANY OTHER OBSTRUCTIONS.
6. THE METER MUST BE INSTALLED IN A LEVEL POSITION.
7. NO SCREW FITTINGS ARE TO BE USED BELOW GROUND.

DRAWN CR EMERSON	DATE 05-24-03	DRAWING NO. PLMB-0010	ISSUE NO.
CHECKED	DATE	SHEET NO. 2 OF 2	