

**A.4      FIGURE 4 – WETLAND AND WATERBODY DELINEATION MAP**





Figure No.  
**4**

Title  
**Wetland and Waterbody Delineation Map**

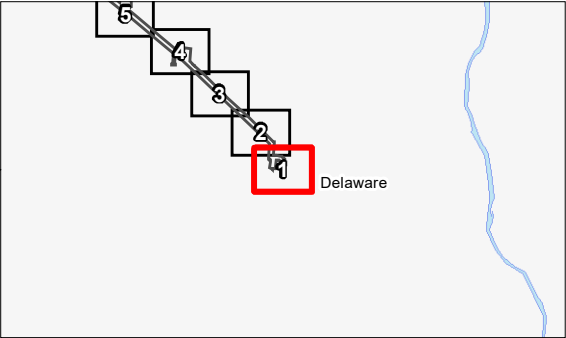
Client/Project  
Columbia Gas of Ohio  
Northern Columbus Loop Natural Gas Pipeline Project (Phase VII)  
Preferred Route Wetland and Waterbody Delineation

Project Location  
Union and Delaware Counties  
Ohio

193707055  
Prepared by JD on 2020-04-13  
Technical Review by MK on 2020-04-14  
Independent Review by MT on 2020-04-15



- Legend**
- Survey Corridor
  - Approximate Proposed Pipeline - Preferred Route
  - Wetland Determination Sample Point
  - Culvert
  - Photo Location
  - Field Delineated Waterway
  - Approximate Waterway
  - Field Delineated Waterway Area
  - Field Delineated Open Water
  - Approximate Open Water
  - Field Delineated Emergent Wetland
  - Field Delineated Forested Wetland
  - Approximate Wetland



**Notes**

- Coordinate System: NAD 1983 StatePlane Ohio North FIPS 3401 Feet
- Data Sources Include: Stantec, Columbia Gas, USGS, NADS, OGRIP
- Orthophotography: 2018 OGRIP





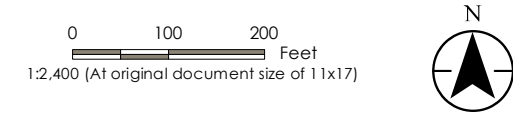


Figure No.  
**4**  
Title  
**Wetland and Waterbody Delineation Map**

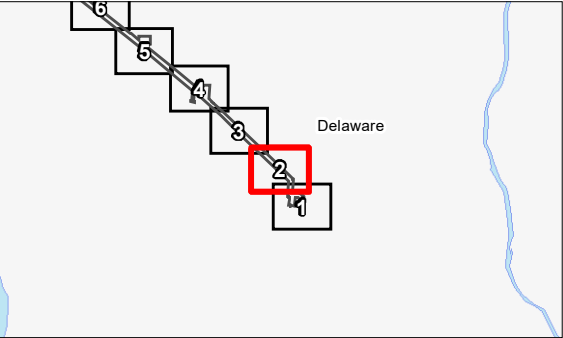
Client/Project  
Columbia Gas of Ohio  
Northern Columbus Loop Natural Gas Pipeline Project (Phase VII)  
Preferred Route Wetland and Waterbody Delineation

Project Location  
Union and Delaware Counties  
Ohio

193707055  
Prepared by JD on 2020-04-13  
Technical Review by MK on 2020-04-14  
Independent Review by MT on 2020-04-15



- Legend**
- Survey Corridor
  - Approximate Proposed Pipeline - Preferred Route
  - Wetland Determination Sample Point
  - Culvert
  - Photo Location
  - Field Delineated Waterway
  - Approximate Waterway
  - Field Delineated Waterway Area
  - Field Delineated Open Water
  - Approximate Open Water
  - Field Delineated Emergent Wetland
  - Field Delineated Forested Wetland
  - Approximate Wetland



**Notes**

- Coordinate System: NAD 1983 StatePlane Ohio North FIPS 3401 Feet
- Data Sources Include: Stantec, Columbia Gas, USGS, NADS, OGRIP
- Orthophotography: 2018 OGRIP



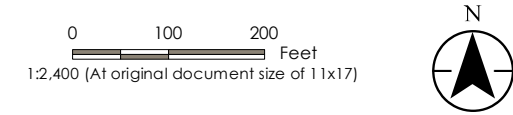




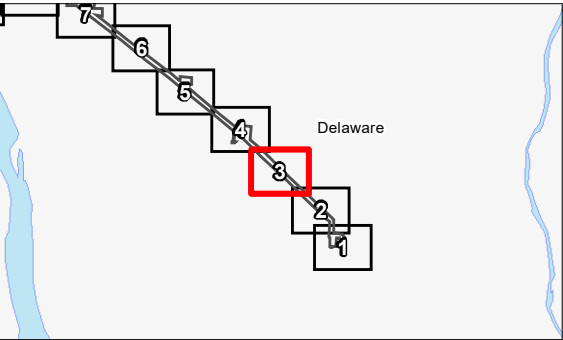
Figure No.  
**4**  
Title  
**Wetland and Waterbody Delineation Map**

Client/Project  
Columbia Gas of Ohio  
Northern Columbus Loop Natural Gas Pipeline Project (Phase VII)  
Preferred Route Wetland and Waterbody Delineation

Project Location  
Union and Delaware Counties  
Ohio  
193707055  
Prepared by JD on 2020-04-13  
Technical Review by MK on 2020-04-14  
Independent Review by MT on 2020-04-15



- Legend**
- Survey Corridor
  - Approximate Proposed Pipeline - Preferred Route
  - Wetland Determination Sample Point
  - Culvert
  - Photo Location
  - Field Delineated Waterway
  - Approximate Waterway
  - Field Delineated Waterway Area
  - Field Delineated Open Water
  - Approximate Open Water
  - Field Delineated Emergent Wetland
  - Field Delineated Forested Wetland
  - Approximate Wetland



**Notes**  
1. Coordinate System: NAD 1983 StatePlane Ohio North FIPS 3401 Feet  
2. Data Sources Include: Stantec, Columbia Gas, USGS, NADS, OGRIP  
3. Orthophotography: 2018 OGRIP





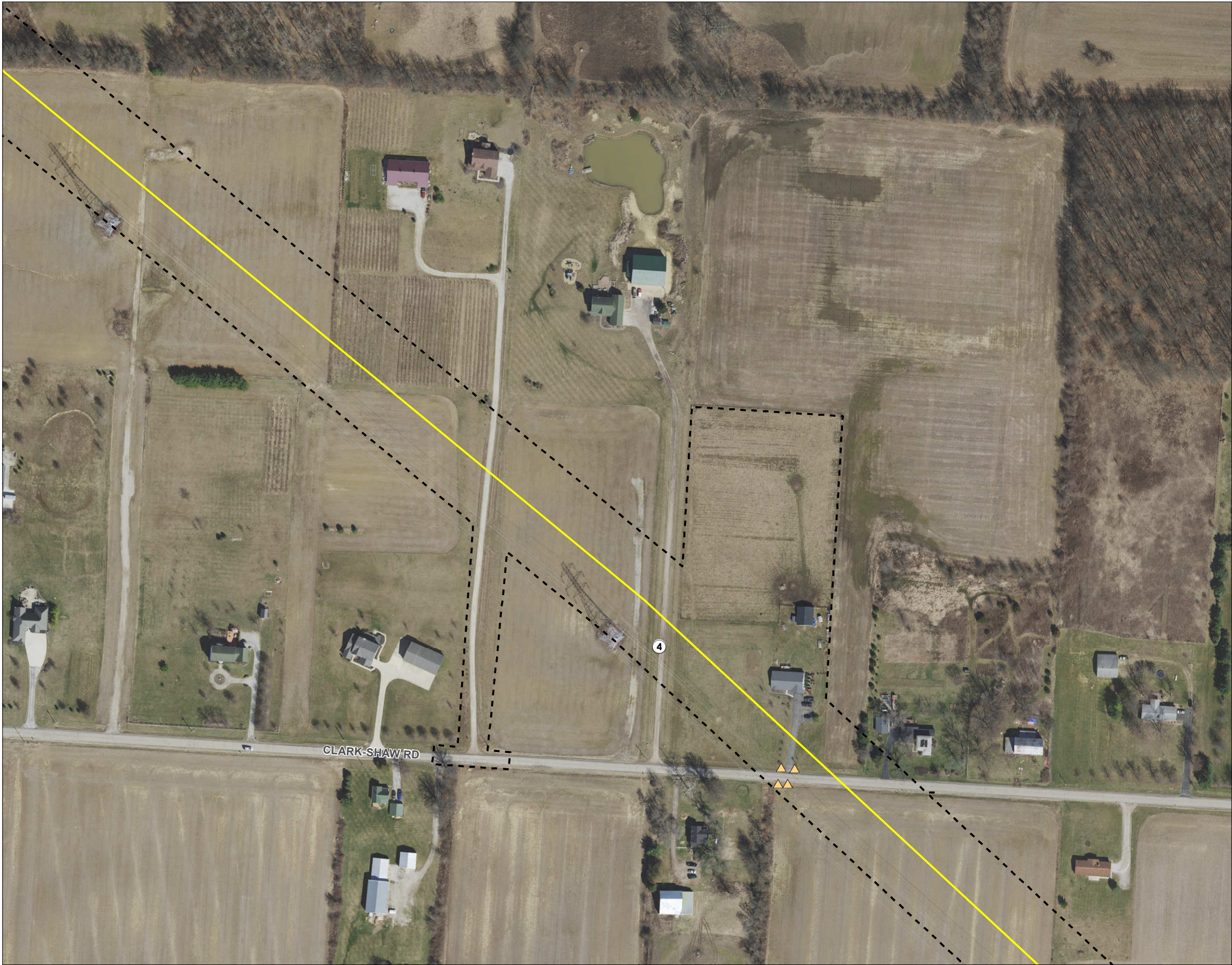


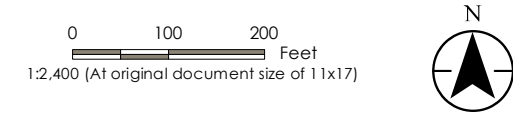
Figure No.  
**4**

Title  
**Wetland and Waterbody Delineation Map**

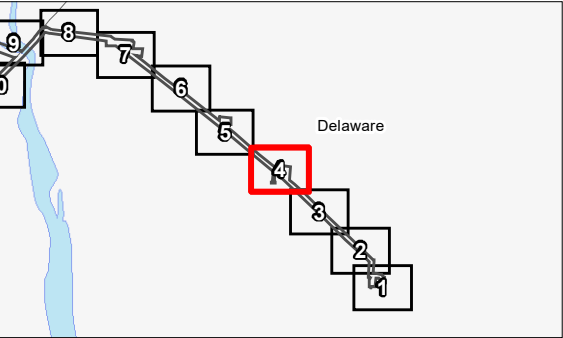
Client/Project  
Columbia Gas of Ohio  
Northern Columbus Loop Natural Gas Pipeline Project (Phase VII)  
Preferred Route Wetland and Waterbody Delineation

Project Location  
Union and Delaware Counties  
Ohio

193707055  
Prepared by JD on 2020-04-13  
Technical Review by MK on 2020-04-14  
Independent Review by MT on 2020-04-15



- Legend**
- Survey Corridor
  - Approximate Proposed Pipeline - Preferred Route
  - Wetland Determination Sample Point
  - Culvert
  - Photo Location
  - Field Delineated Waterway
  - Approximate Waterway
  - Field Delineated Waterway Area
  - Field Delineated Open Water
  - Approximate Open Water
  - Field Delineated Emergent Wetland
  - Field Delineated Forested Wetland
  - Approximate Wetland



**Notes**

- Coordinate System: NAD 1983 StatePlane Ohio North FIPS 3401 Feet
- Data Sources Include: Stantec, Columbia Gas, USGS, NADS, OGRIP
- Orthophotography: 2018 OGRIP





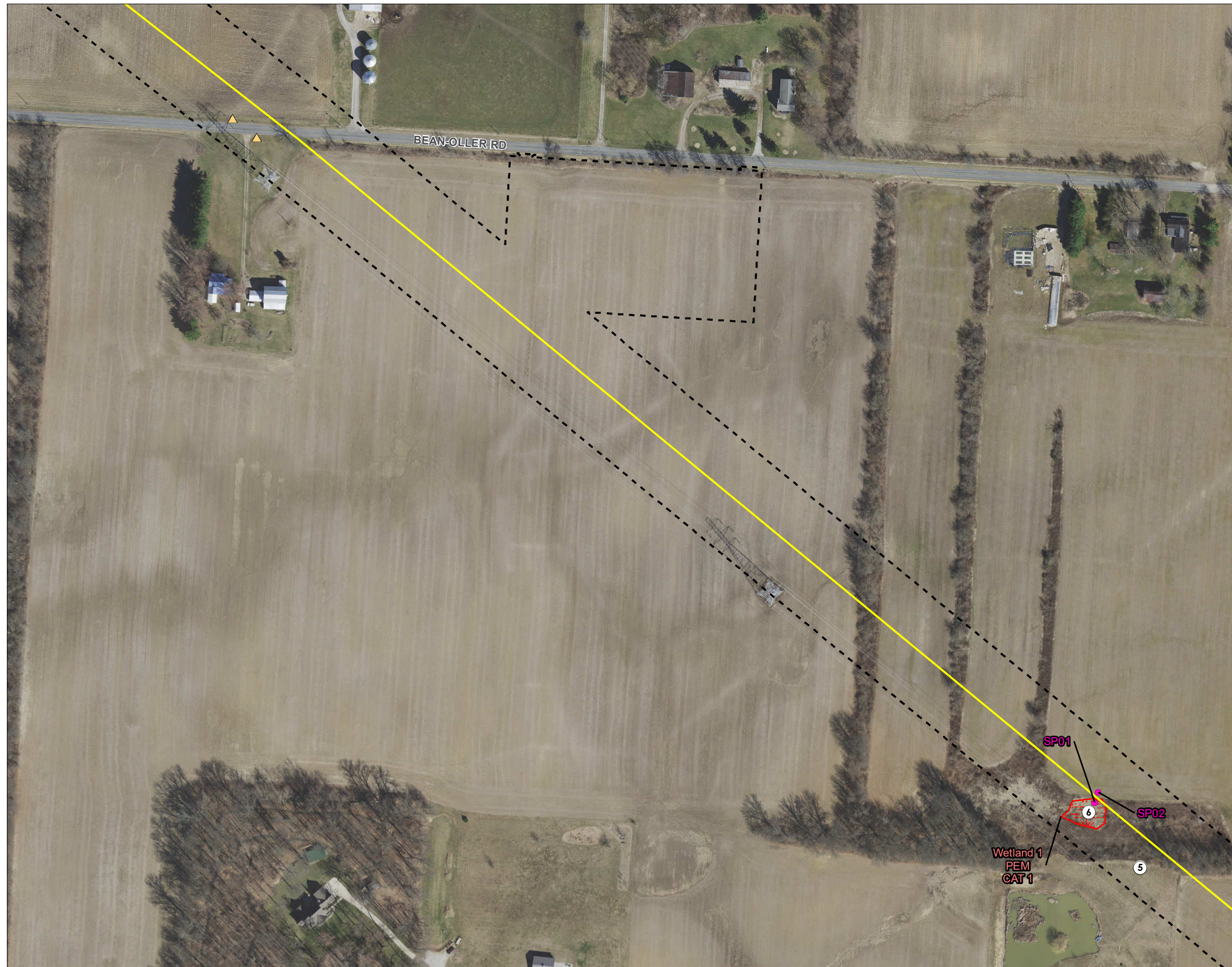


Figure No.

4

---

Title

## Wetland and Waterbody Delineation Map

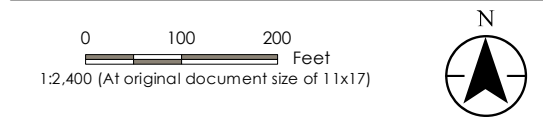
Client/Project

Columbia Gas of Ohio  
Northern Columbus Loop Natural Gas Pipeline Project (Phase VII)  
Preferred Route Wetland and Waterbody Delineation

Project Location	193707055
------------------	-----------

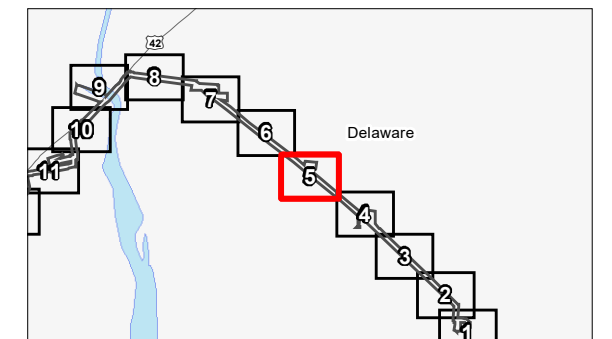
Union and Delaware Counties  
Ohio

Prepared by JD on 2020-04-13  
Technical Review by MK on 2020-04-14



Legend

- 
- Legend:
- Survey Corridor
  - Approximate Proposed Pipeline - Preferred Route
  - Wetland Determination Sample Point
  - Culvert
  - Photo Location
  - Field Delineated Waterway
  - Approximate Waterway
  - Field Delineated Waterway Area
  - Field Delineated Open Water
  - Approximate Open Water
  - Field Delineated Emergent Wetland
  - Field Delineated Forested Wetland
  - Approximate Wetland



## Notes

1. Coordinate System: NAD 1983 StatePlane Ohio North FIPS 3401 Feet  
2. Data Sources Include: Stantec, Columbia Gas, USGS, NADS, OGRIP  
3. Orthophotography: 2018 OGRIP







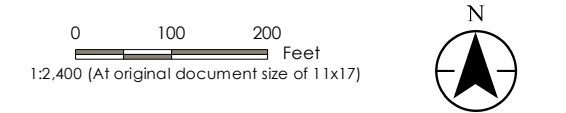
Figure No.  
**4**

Title  
**Wetland and Waterbody Delineation Map**

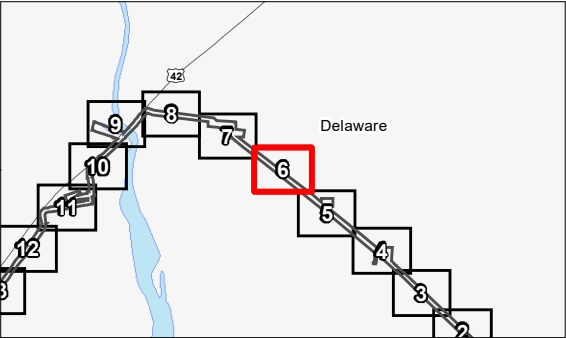
Client/Project  
Columbia Gas of Ohio  
Northern Columbus Loop Natural Gas Pipeline Project (Phase VII)  
Preferred Route Wetland and Waterbody Delineation

Project Location  
Union and Delaware Counties  
Ohio

193707055  
Prepared by JD on 2020-04-13  
Technical Review by MK on 2020-04-14  
Independent Review by MT on 2020-04-15



- Legend**
- Survey Corridor
  - Approximate Proposed Pipeline - Preferred Route
  - Wetland Determination Sample Point
  - Culvert
  - Photo Location
  - Field Delineated Waterway
  - Approximate Waterway
  - Field Delineated Waterway Area
  - Field Delineated Open Water
  - Approximate Open Water
  - Field Delineated Emergent Wetland
  - Field Delineated Forested Wetland
  - Approximate Wetland



**Notes**

- Coordinate System: NAD 1983 StatePlane Ohio North FIPS 3401 Feet
- Data Sources Include: Stantec, Columbia Gas, USGS, NADS, OGRIP
- Orthophotography: 2018 OGRIP







Figure No.  
**4**

Title  
**Wetland and Waterbody Delineation Map**

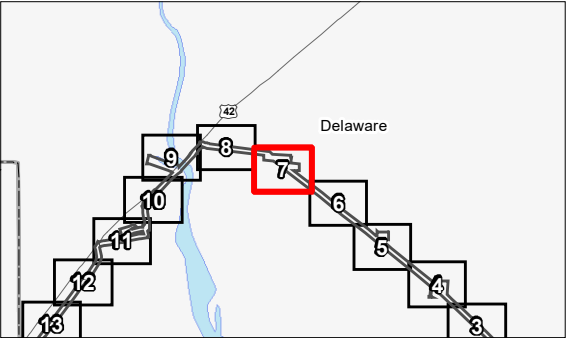
Client/Project  
Columbia Gas of Ohio  
Northern Columbus Loop Natural Gas Pipeline Project (Phase VII)  
Preferred Route Wetland and Waterbody Delineation

Project Location  
Union and Delaware Counties  
Ohio

193707055  
Prepared by JD on 2020-04-13  
Technical Review by MK on 2020-04-14  
Independent Review by MT on 2020-04-15



- Legend**
- Survey Corridor
  - Approximate Proposed Pipeline - Preferred Route
  - Wetland Determination Sample Point
  - Culvert
  - Photo Location
  - Field Delineated Waterway
  - Approximate Waterway
  - Field Delineated Waterway Area
  - Field Delineated Open Water
  - Approximate Open Water
  - Field Delineated Emergent Wetland
  - Field Delineated Forested Wetland
  - Approximate Wetland



**Notes**

1. Coordinate System: NAD 1983 StatePlane Ohio North FIPS 3401 Feet
2. Data Sources Include: Stantec, Columbia Gas, USGS, NADS, OGRIP
3. Orthophotography: 2018 OGRIP







Figure No.  
**4**  
Title  
**Wetland and Waterbody Delineation Map**

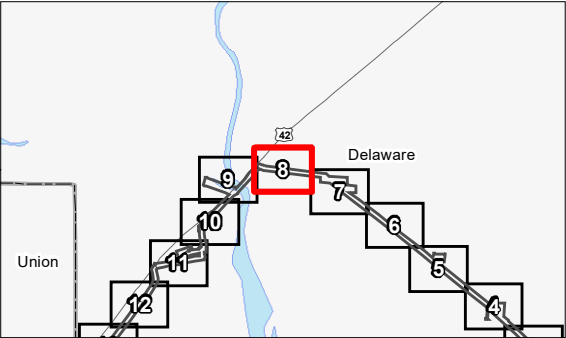
Client/Project  
Columbia Gas of Ohio  
Northern Columbus Loop Natural Gas Pipeline Project (Phase VII)  
Preferred Route Wetland and Waterbody Delineation

Project Location  
Union and Delaware Counties  
Ohio

193707055  
Prepared by JD on 2020-04-13  
Technical Review by MK on 2020-04-14  
Independent Review by MT on 2020-04-15



- Legend**
- Survey Corridor
  - Approximate Proposed Pipeline - Preferred Route
  - Wetland Determination Sample Point
  - Culvert
  - Photo Location
  - Field Delineated Waterway
  - Approximate Waterway
  - Field Delineated Waterway Area
  - Field Delineated Open Water
  - Approximate Open Water
  - Field Delineated Emergent Wetland
  - Field Delineated Forested Wetland
  - Approximate Wetland



**Notes**

- Coordinate System: NAD 1983 StatePlane Ohio North FIPS 3401 Feet
- Data Sources Include: Stantec, Columbia Gas, USGS, NADS, OGRIP
- Orthophotography: 2018 OGRIP







Figure No.  
**4**  
Title  
**Wetland and Waterbody Delineation Map**

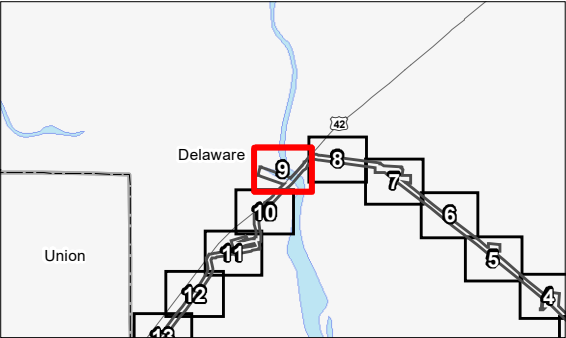
Client/Project  
Columbia Gas of Ohio  
Northern Columbus Loop Natural Gas Pipeline Project (Phase VII)  
Preferred Route Wetland and Waterbody Delineation

Project Location  
Union and Delaware Counties  
Ohio

193707055  
Prepared by JD on 2020-04-13  
Technical Review by MK on 2020-04-14  
Independent Review by MT on 2020-04-15



- Legend**
- Survey Corridor
  - Approximate Proposed Pipeline - Preferred Route
  - Wetland Determination Sample Point
  - Culvert
  - Photo Location
  - Field Delineated Waterway
  - Approximate Waterway
  - Field Delineated Waterway Area
  - Field Delineated Open Water
  - Approximate Open Water
  - Field Delineated Emergent Wetland
  - Field Delineated Forested Wetland
  - Approximate Wetland



**Notes**

- Coordinate System: NAD 1983 StatePlane Ohio North FIPS 3401 Feet
- Data Sources Include: Stantec, Columbia Gas, USGS, NADS, OGRIP
- Orthophotography: 2018 OGRIP





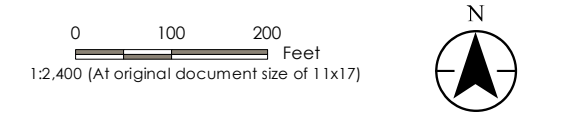


Figure No.  
**4**  
Title  
**Wetland and Waterbody Delineation Map**

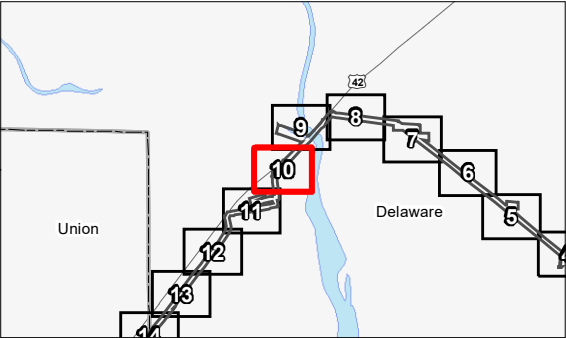
Client/Project  
Columbia Gas of Ohio  
Northern Columbus Loop Natural Gas Pipeline Project (Phase VII)  
Preferred Route Wetland and Waterbody Delineation

Project Location  
Union and Delaware Counties  
Ohio

193707055  
Prepared by JD on 2020-04-13  
Technical Review by MK on 2020-04-14  
Independent Review by MT on 2020-04-15



- Legend**
- Survey Corridor
  - Approximate Proposed Pipeline - Preferred Route
  - Wetland Determination Sample Point
  - Culvert
  - Photo Location
  - Field Delineated Waterway
  - Approximate Waterway
  - Field Delineated Waterway Area
  - Field Delineated Open Water
  - Approximate Open Water
  - Field Delineated Emergent Wetland
  - Field Delineated Forested Wetland
  - Approximate Wetland



**Notes**

- Coordinate System: NAD 1983 StatePlane Ohio North FIPS 3401 Feet
- Data Sources Include: Stantec, Columbia Gas, USGS, NADS, OGRIP
- Orthophotography: 2018 OGRIP





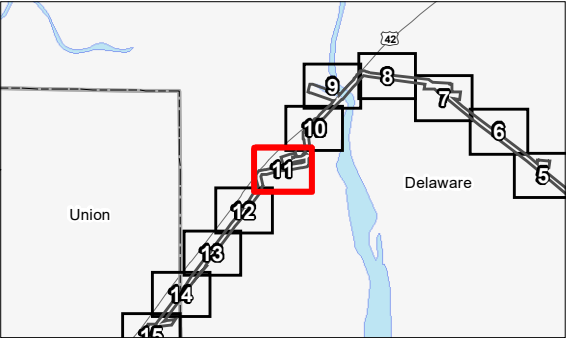


Figure No.  
**4**  
Title  
**Wetland and Waterbody Delineation Map**

Client/Project  
Columbia Gas of Ohio  
Northern Columbus Loop Natural Gas Pipeline Project (Phase VII)  
Preferred Route Wetland and Waterbody Delineation  
Project Location  
Union and Delaware Counties  
Ohio  
193707055  
Prepared by JD on 2020-04-13  
Technical Review by MK on 2020-04-14  
Independent Review by MT on 2020-04-15



- Legend**
- Survey Corridor
  - Approximate Proposed Pipeline - Preferred Route
  - Wetland Determination Sample Point
  - Culvert
  - Photo Location
  - Field Delineated Waterway
  - Approximate Waterway
  - Field Delineated Waterway Area
  - Field Delineated Open Water
  - Approximate Open Water
  - Field Delineated Emergent Wetland
  - Field Delineated Forested Wetland
  - Approximate Wetland



**Notes**  
1. Coordinate System: NAD 1983 StatePlane Ohio North FIPS 3401 Feet  
2. Data Sources Include: Stantec, Columbia Gas, USGS, NADS, OGRIP  
3. Orthophotography: 2018 OGRIP







Figure No.  
**4**

Title  
**Wetland and Waterbody Delineation Map**

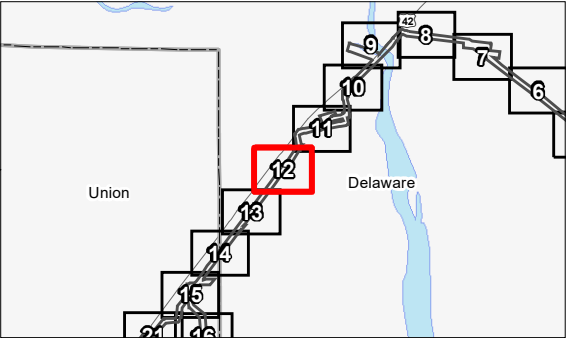
Client/Project  
Columbia Gas of Ohio  
Northern Columbus Loop Natural Gas Pipeline Project (Phase VII)  
Preferred Route Wetland and Waterbody Delineation

Project Location  
Union and Delaware Counties  
Ohio

193707055  
Prepared by JD on 2020-04-13  
Technical Review by MK on 2020-04-14  
Independent Review by MT on 2020-04-15



- Legend**
- Survey Corridor
  - Approximate Proposed Pipeline - Preferred Route
  - Wetland Determination Sample Point
  - Culvert
  - Photo Location
  - Field Delineated Waterway
  - Approximate Waterway
  - Field Delineated Waterway Area
  - Field Delineated Open Water
  - Approximate Open Water
  - Field Delineated Emergent Wetland
  - Field Delineated Forested Wetland
  - Approximate Wetland



**Notes**

- Coordinate System: NAD 1983 StatePlane Ohio North FIPS 3401 Feet
- Data Sources Include: Stantec, Columbia Gas, USGS, NADS, OGRIP
- Orthophotography: 2018 OGRIP



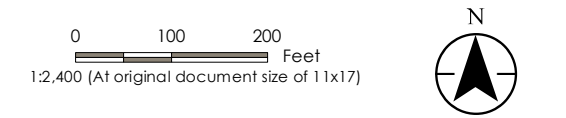




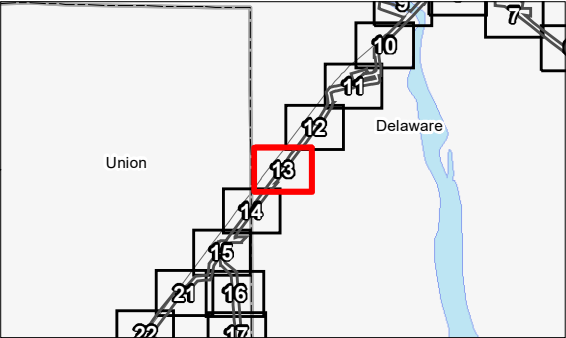
Figure No.  
**4**  
Title  
**Wetland and Waterbody Delineation Map**

Client/Project  
Columbia Gas of Ohio  
Northern Columbus Loop Natural Gas Pipeline Project (Phase VII)  
Preferred Route Wetland and Waterbody Delineation

Project Location  
Union and Delaware Counties  
Ohio  
193707055  
Prepared by JD on 2020-04-13  
Technical Review by MK on 2020-04-14  
Independent Review by MT on 2020-04-15



- Legend**
- Survey Corridor
  - Approximate Proposed Pipeline - Preferred Route
  - Wetland Determination Sample Point
  - Culvert
  - Photo Location
  - Field Delineated Waterway
  - Approximate Waterway
  - Field Delineated Waterway Area
  - Field Delineated Open Water
  - Approximate Open Water
  - Field Delineated Emergent Wetland
  - Field Delineated Forested Wetland
  - Approximate Wetland



**Notes**  
1. Coordinate System: NAD 1983 StatePlane Ohio North FIPS 3401 Feet  
2. Data Sources Include: Stantec, Columbia Gas, USGS, NADS, OGRIP  
3. Orthophotography: 2018 OGRIP







Figure No.  
**4**

Title  
**Wetland and Waterbody Delineation Map**

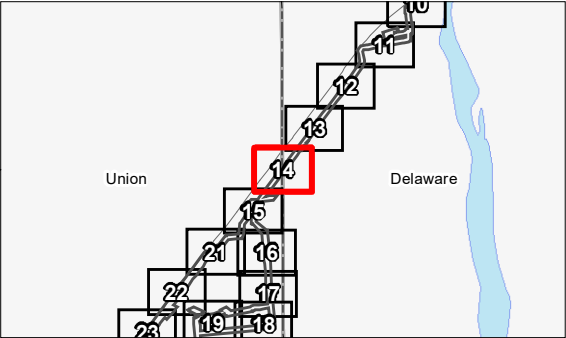
Client/Project  
Columbia Gas of Ohio  
Northern Columbus Loop Natural Gas Pipeline Project (Phase VII)  
Preferred Route Wetland and Waterbody Delineation

Project Location  
Union and Delaware Counties  
Ohio

193707055  
Prepared by JD on 2020-04-13  
Technical Review by MK on 2020-04-14  
Independent Review by MT on 2020-04-15



- Legend**
- Survey Corridor
  - Approximate Proposed Pipeline - Preferred Route
  - Wetland Determination Sample Point
  - Culvert
  - Photo Location
  - Field Delineated Waterway
  - Approximate Waterway
  - Field Delineated Waterway Area
  - Field Delineated Open Water
  - Approximate Open Water
  - Field Delineated Emergent Wetland
  - Field Delineated Forested Wetland
  - Approximate Wetland



**Notes**

1. Coordinate System: NAD 1983 StatePlane Ohio North FIPS 3401 Feet
2. Data Sources Include: Stantec, Columbia Gas, USGS, NADS, OGRIP
3. Orthophotography: 2018 OGRIP





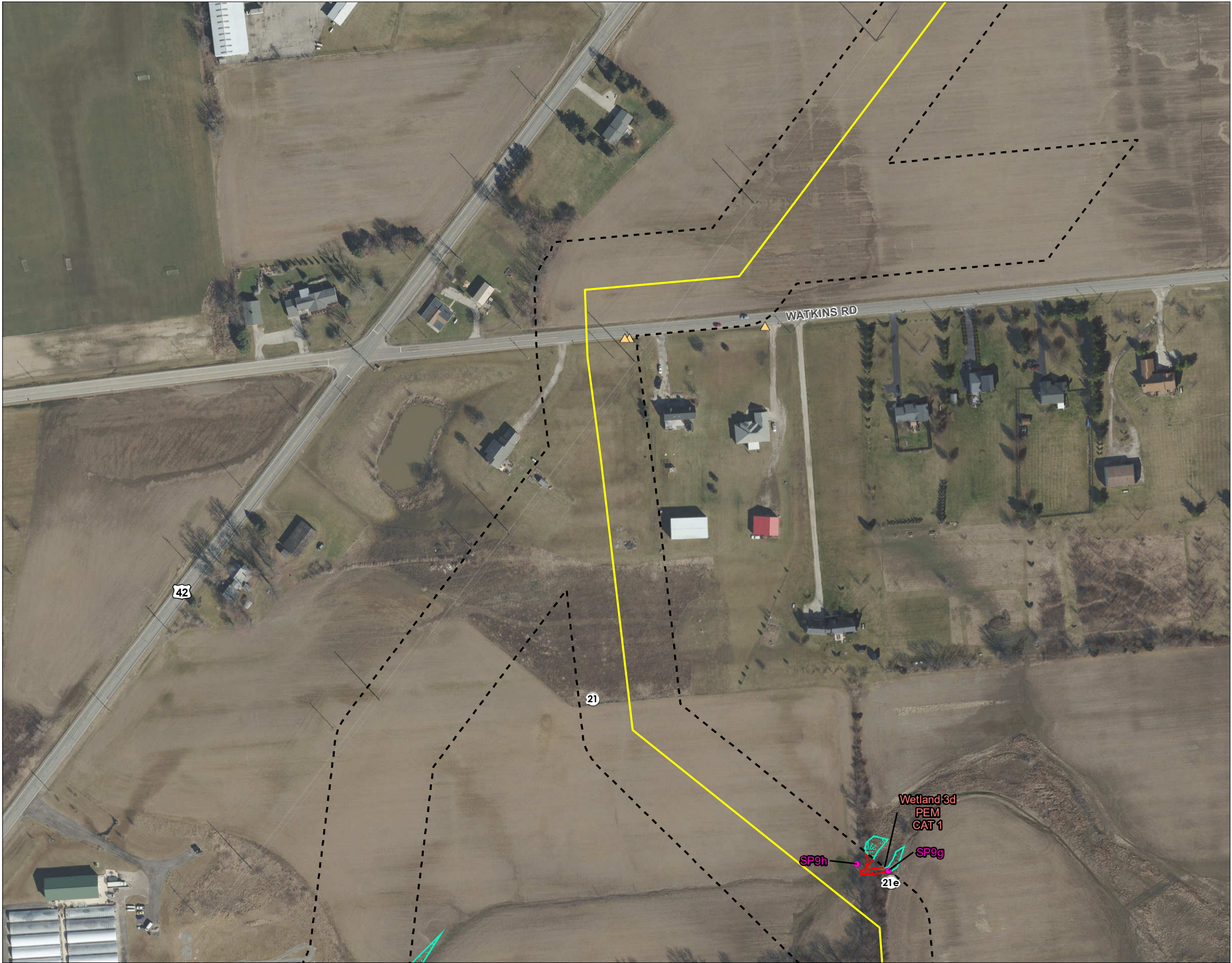
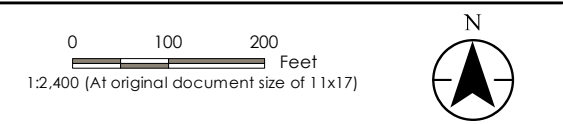


Figure No.  
**4**  
Title  
**Wetland and Waterbody Delineation Map**

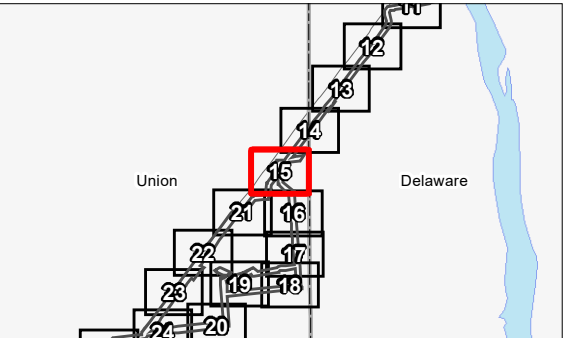
Client/Project  
Columbia Gas of Ohio  
Northern Columbus Loop Natural Gas Pipeline Project (Phase VII)  
Preferred Route Wetland and Waterbody Delineation

Project Location  
Union and Delaware Counties  
Ohio

193707055  
Prepared by JD on 2020-04-13  
Technical Review by MK on 2020-04-14  
Independent Review by MT on 2020-04-15



- Legend**
- Survey Corridor
  - Approximate Proposed Pipeline - Preferred Route
  - Wetland Determination Sample Point
  - Culvert
  - Photo Location
  - Field Delineated Waterway
  - Approximate Waterway
  - Field Delineated Waterway Area
  - Field Delineated Open Water
  - Approximate Open Water
  - Field Delineated Emergent Wetland
  - Field Delineated Forested Wetland
  - Approximate Wetland



**Notes**

- Coordinate System: NAD 1983 StatePlane Ohio North FIPS 3401 Feet
- Data Sources Include: Stantec, Columbia Gas, USGS, NADS, OGRIP
- Orthophotography: 2018 OGRIP





V:\1937\Activa\193707055\03\_data\ok\_csd\ok\mxd\Wetland Delineation\193707055.mxd      Prepared: 2020-04-13      Revised: 2020-08-10 By: lbb@stantec.com



Figure No.  
**4**  
Title  
**Wetland and Waterbody Delineation Map**

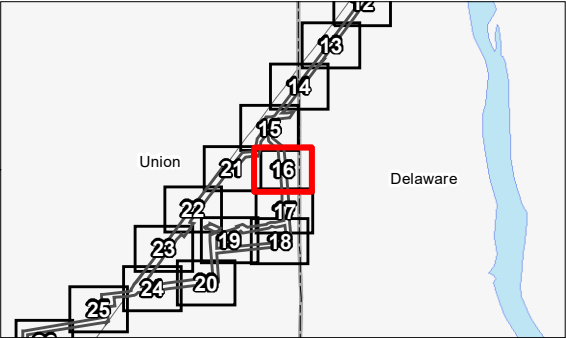
Client/Project  
Columbia Gas of Ohio  
Northern Columbus Loop Natural Gas Pipeline Project (Phase VII)  
Preferred Route Wetland and Waterbody Delineation

Project Location  
Union and Delaware Counties  
Ohio

193707055  
Prepared by JD on 2020-04-13  
Technical Review by MK on 2020-04-14  
Independent Review by MT on 2020-04-15



- Legend**
- Survey Corridor
  - Approximate Proposed Pipeline - Preferred Route
  - Wetland Determination Sample Point
  - Culvert
  - Photo Location
  - Field Delineated Waterway
  - Approximate Waterway
  - Field Delineated Waterway Area
  - Field Delineated Open Water
  - Approximate Open Water
  - Field Delineated Emergent Wetland
  - Field Delineated Forested Wetland
  - Approximate Wetland



**Notes**

1. Coordinate System: NAD 1983 StatePlane Ohio North FIPS 3401 Feet
2. Data Sources Include: Stantec, Columbia Gas, USGS, NADS, OGRIP
3. Orthophotography: 2018 OGRIP



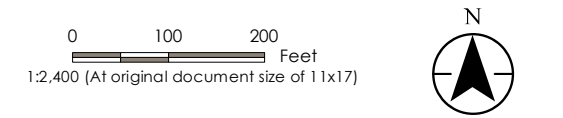




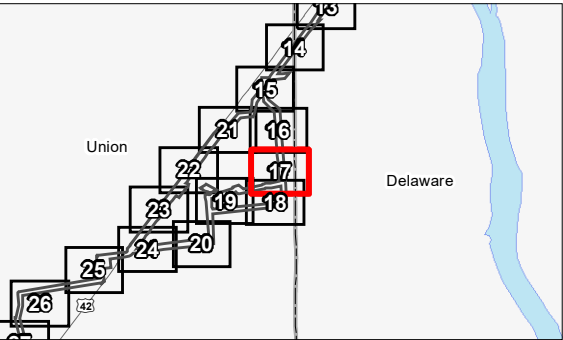
Figure No.  
**4**  
Title  
**Wetland and Waterbody Delineation Map**

Client/Project  
Columbia Gas of Ohio  
Northern Columbus Loop Natural Gas Pipeline Project (Phase VII)  
Preferred Route Wetland and Waterbody Delineation

Project Location  
Union and Delaware Counties  
Ohio  
193707055  
Prepared by JD on 2020-04-13  
Technical Review by MK on 2020-04-14  
Independent Review by MT on 2020-04-15



- Legend**
- Survey Corridor
  - Approximate Proposed Pipeline - Preferred Route
  - Wetland Determination Sample Point
  - Culvert
  - Photo Location
  - Field Delineated Waterway
  - Approximate Waterway
  - Field Delineated Waterway Area
  - Field Delineated Open Water
  - Approximate Open Water
  - Field Delineated Emergent Wetland
  - Field Delineated Forested Wetland
  - Approximate Wetland



- Notes**
- Coordinate System: NAD 1983 StatePlane Ohio North FIPS 3401 Feet
  - Data Sources Include: Stantec, Columbia Gas, USGS, NADS, OGRIP
  - Orthophotography: 2018 OGRIP









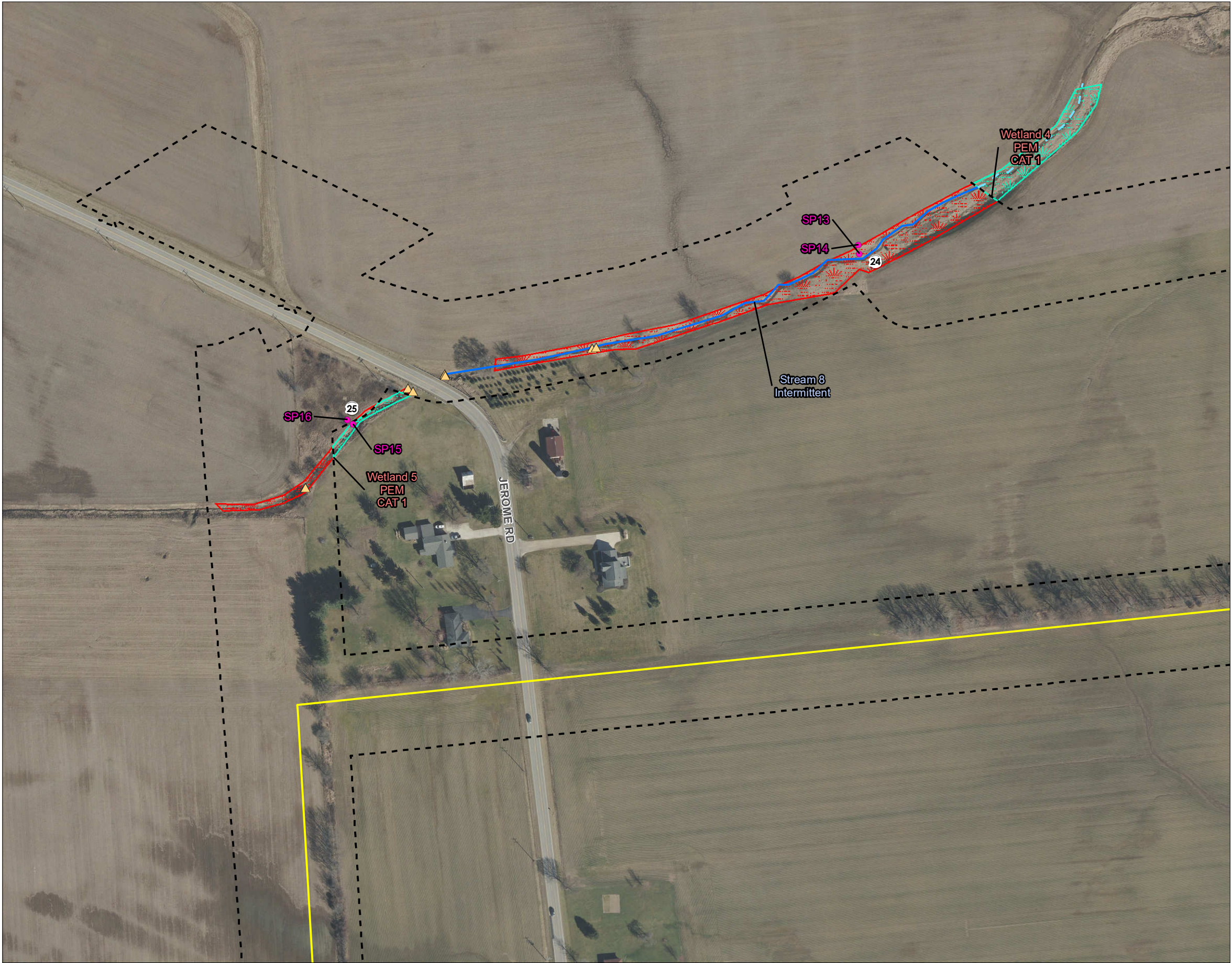
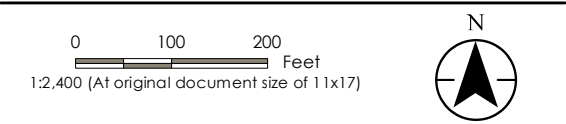


Figure No.  
**4**  
Title  
**Wetland and Waterbody Delineation Map**

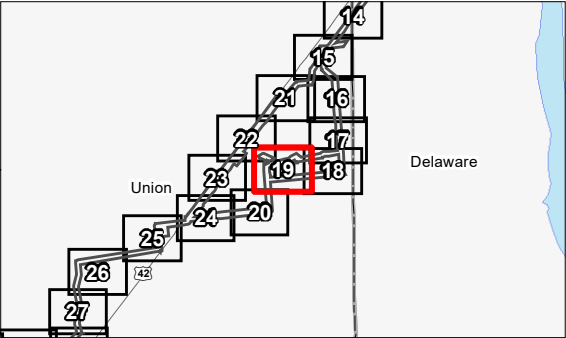
Client/Project  
Columbia Gas of Ohio  
Northern Columbus Loop Natural Gas Pipeline Project (Phase VII)  
Preferred Route Wetland and Waterbody Delineation

Project Location  
Union and Delaware Counties  
Ohio

193707055  
Prepared by JD on 2020-04-13  
Technical Review by MK on 2020-04-14  
Independent Review by MT on 2020-04-15



- Legend**
- Survey Corridor
  - Approximate Proposed Pipeline - Preferred Route
  - Wetland Determination Sample Point
  - Culvert
  - Photo Location
  - Field Delineated Waterway
  - Approximate Waterway
  - Field Delineated Waterway Area
  - Field Delineated Open Water
  - Approximate Open Water
  - Field Delineated Emergent Wetland
  - Field Delineated Forested Wetland
  - Approximate Wetland



**Notes**

1. Coordinate System: NAD 1983 StatePlane Ohio North FIPS 3401 Feet
2. Data Sources Include: Stantec, Columbia Gas, USGS, NADS, OGRIP
3. Orthophotography: 2018 OGRIP





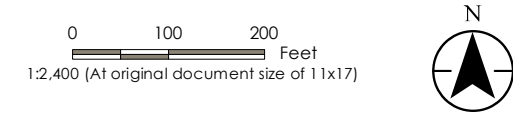


Figure No.  
**4**  
Title  
**Wetland and Waterbody Delineation Map**

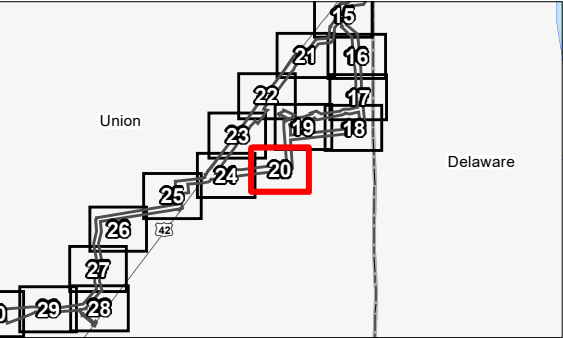
Client/Project  
Columbia Gas of Ohio  
Northern Columbus Loop Natural Gas Pipeline Project (Phase VII)  
Preferred Route Wetland and Waterbody Delineation

Project Location  
Union and Delaware Counties  
Ohio

193707055  
Prepared by JD on 2020-04-13  
Technical Review by MK on 2020-04-14  
Independent Review by MT on 2020-04-15



- Legend**
- Survey Corridor
  - Approximate Proposed Pipeline - Preferred Route
  - Wetland Determination Sample Point
  - Culvert
  - Photo Location
  - Field Delineated Waterway
  - Approximate Waterway
  - Field Delineated Waterway Area
  - Field Delineated Open Water
  - Approximate Open Water
  - Field Delineated Emergent Wetland
  - Field Delineated Forested Wetland
  - Approximate Wetland



**Notes**

- Coordinate System: NAD 1983 StatePlane Ohio North FIPS 3401 Feet
- Data Sources Include: Stantec, Columbia Gas, USGS, NADS, OGRIP
- Orthophotography: 2018 OGRIP





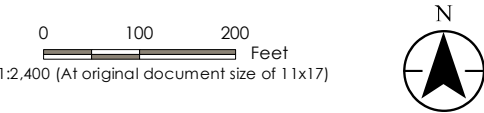
V:\1937\Activa\193707055\03\_data\ok\_csd\ok\mxd\Wetland Delineation\193707055.mxd Preferred\04\_1cd.mxd 193707055.mxd Revised: 2020-08-10 By: lbborete



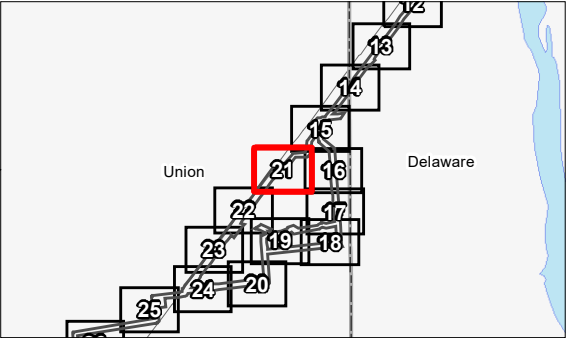
Figure No.  
**4**  
Title  
**Wetland and Waterbody Delineation Map**

Client/Project  
Columbia Gas of Ohio  
Northern Columbus Loop Natural Gas Pipeline Project (Phase VII)  
Preferred Route Wetland and Waterbody Delineation

Project Location  
Union and Delaware Counties  
Ohio  
193707055  
Prepared by JD on 2020-04-13  
Technical Review by MK on 2020-04-14  
Independent Review by MT on 2020-04-15



- Legend**
- Survey Corridor
  - Approximate Proposed Pipeline - Preferred Route
  - Wetland Determination Sample Point
  - Culvert
  - Photo Location
  - Field Delineated Waterway
  - Approximate Waterway
  - Field Delineated Waterway Area
  - Field Delineated Open Water
  - Approximate Open Water
  - Field Delineated Emergent Wetland
  - Field Delineated Forested Wetland
  - Approximate Wetland



- Notes**
- Coordinate System: NAD 1983 StatePlane Ohio North FIPS 3401 Feet
  - Data Sources Include: Stantec, Columbia Gas, USGS, NADS, OGRIP
  - Orthophotography: 2018 OGRIP



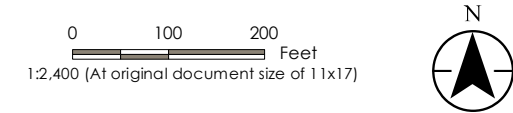




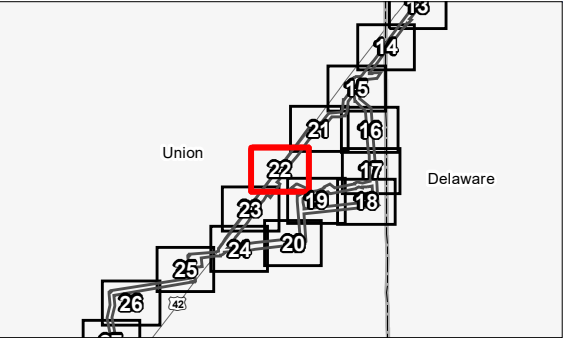
Figure No.  
**4**  
Title  
**Wetland and Waterbody Delineation Map**

Client/Project  
Columbia Gas of Ohio  
Northern Columbus Loop Natural Gas Pipeline Project (Phase VII)  
Preferred Route Wetland and Waterbody Delineation

Project Location  
Union and Delaware Counties  
Ohio  
193707055  
Prepared by JD on 2020-04-13  
Technical Review by MK on 2020-04-14  
Independent Review by MT on 2020-04-15



- Legend**
- Survey Corridor
  - Approximate Proposed Pipeline - Preferred Route
  - Wetland Determination Sample Point
  - Culvert
  - Photo Location
  - Field Delineated Waterway
  - Approximate Waterway
  - Field Delineated Waterway Area
  - Field Delineated Open Water
  - Approximate Open Water
  - Field Delineated Emergent Wetland
  - Field Delineated Forested Wetland
  - Approximate Wetland



**Notes**  
1. Coordinate System: NAD 1983 StatePlane Ohio North FIPS 3401 Feet  
2. Data Sources Include: Stantec, Columbia Gas, USGS, NADS, OGRIP  
3. Orthophotography: 2018 OGRIP





V:\1937\Activa\193707055\03\_data\ok\_csd\ok\mxd\Wetland Data Report\NCL Preferred\04\_1cd.mxd 193707055.mxd Revised: 2020-08-10 by: lbborete

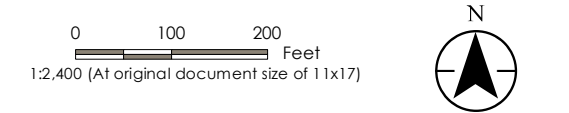


Figure No.  
**4**  
Title  
**Wetland and Waterbody Delineation Map**

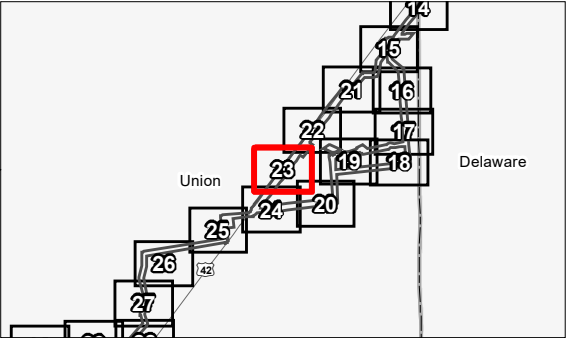
Client/Project  
Columbia Gas of Ohio  
Northern Columbus Loop Natural Gas Pipeline Project (Phase VII)  
Preferred Route Wetland and Waterbody Delineation

Project Location  
Union and Delaware Counties  
Ohio

193707055  
Prepared by JD on 2020-04-13  
Technical Review by MK on 2020-04-14  
Independent Review by MT on 2020-04-15



- Legend**
- Survey Corridor
  - Approximate Proposed Pipeline - Preferred Route
  - Wetland Determination Sample Point
  - Culvert
  - Photo Location
  - Field Delineated Waterway
  - Approximate Waterway
  - Field Delineated Waterway Area
  - Field Delineated Open Water
  - Approximate Open Water
  - Field Delineated Emergent Wetland
  - Field Delineated Forested Wetland
  - Approximate Wetland



**Notes**

- Coordinate System: NAD 1983 StatePlane Ohio North FIPS 3401 Feet
- Data Sources Include: Stantec, Columbia Gas, USGS, NADS, OGRIP
- Orthophotography: 2018 OGRIP



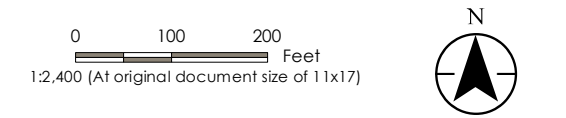




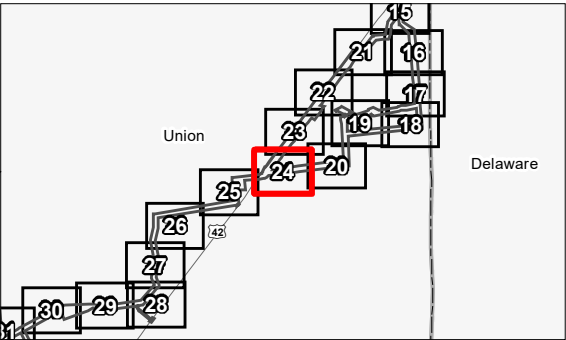
Figure No.  
**4**  
Title  
**Wetland and Waterbody Delineation Map**

Client/Project  
Columbia Gas of Ohio  
Northern Columbus Loop Natural Gas Pipeline Project (Phase VII)  
Preferred Route Wetland and Waterbody Delineation

Project Location  
Union and Delaware Counties  
Ohio  
193707055  
Prepared by JD on 2020-04-13  
Technical Review by MK on 2020-04-14  
Independent Review by MT on 2020-04-15



- Legend**
- Survey Corridor
  - Approximate Proposed Pipeline - Preferred Route
  - Wetland Determination Sample Point
  - Culvert
  - Photo Location
  - Field Delineated Waterway
  - Approximate Waterway
  - Field Delineated Waterway Area
  - Field Delineated Open Water
  - Approximate Open Water
  - Field Delineated Emergent Wetland
  - Field Delineated Forested Wetland
  - Approximate Wetland



**Notes**  
1. Coordinate System: NAD 1983 StatePlane Ohio North FIPS 3401 Feet  
2. Data Sources Include: Stantec, Columbia Gas, USGS, NADS, OGRIP  
3. Orthophotography: 2018 OGRIP







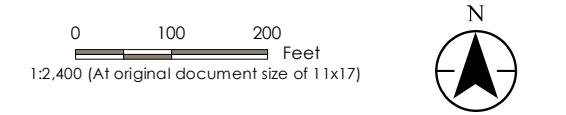
Figure No.  
**4**

Title  
**Wetland and Waterbody Delineation Map**

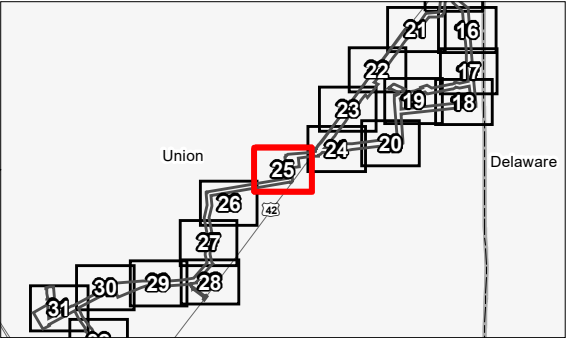
Client/Project  
Columbia Gas of Ohio  
Northern Columbus Loop Natural Gas Pipeline Project (Phase VII)  
Preferred Route Wetland and Waterbody Delineation

Project Location  
Union and Delaware Counties  
Ohio

193707055  
Prepared by JD on 2020-04-13  
Technical Review by MK on 2020-04-14  
Independent Review by MT on 2020-04-15



- Legend**
- Survey Corridor
  - Approximate Proposed Pipeline - Preferred Route
  - Wetland Determination Sample Point
  - Culvert
  - Photo Location
  - Field Delineated Waterway
  - Approximate Waterway
  - Field Delineated Waterway Area
  - Field Delineated Open Water
  - Approximate Open Water
  - Field Delineated Emergent Wetland
  - Field Delineated Forested Wetland
  - Approximate Wetland



**Notes**

- Coordinate System: NAD 1983 StatePlane Ohio North FIPS 3401 Feet
- Data Sources Include: Stantec, Columbia Gas, USGS, NADS, OGRIP
- Orthophotography: 2018 OGRIP







Figure No.  
**4**  
Title  
**Wetland and Waterbody Delineation Map**

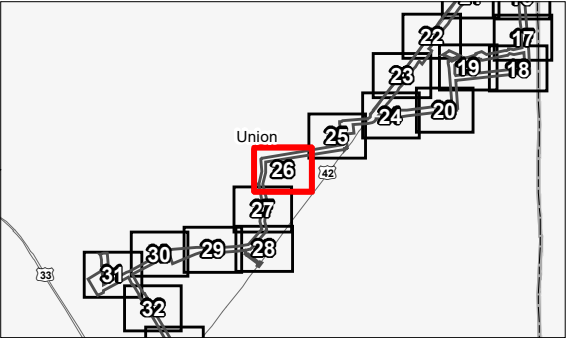
Client/Project  
Columbia Gas of Ohio  
Northern Columbus Loop Natural Gas Pipeline Project (Phase VII)  
Preferred Route Wetland and Waterbody Delineation

Project Location  
Union and Delaware Counties  
Ohio

193707055  
Prepared by JD on 2020-04-13  
Technical Review by MK on 2020-04-14  
Independent Review by MT on 2020-04-15



- Legend**
- Survey Corridor
  - Approximate Proposed Pipeline - Preferred Route
  - Wetland Determination Sample Point
  - Culvert
  - Photo Location
  - Field Delineated Waterway
  - Approximate Waterway
  - Field Delineated Waterway Area
  - Field Delineated Open Water
  - Approximate Open Water
  - Field Delineated Emergent Wetland
  - Field Delineated Forested Wetland
  - Approximate Wetland



**Notes**

1. Coordinate System: NAD 1983 StatePlane Ohio North FIPS 3401 Feet
2. Data Sources Include: Stantec, Columbia Gas, USGS, NADS, OGRIP
3. Orthophotography: 2018 OGRIP







Figure No.  
**4**  
Title  
**Wetland and Waterbody Delineation Map**

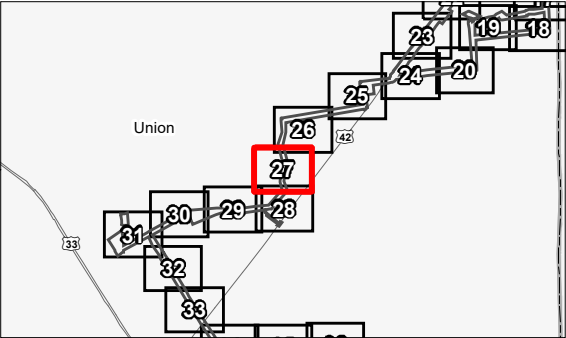
Client/Project  
Columbia Gas of Ohio  
Northern Columbus Loop Natural Gas Pipeline Project (Phase VII)  
Preferred Route Wetland and Waterbody Delineation

Project Location  
Union and Delaware Counties  
Ohio

193707055  
Prepared by JD on 2020-04-13  
Technical Review by MK on 2020-04-14  
Independent Review by MT on 2020-04-15



- Legend**
- Survey Corridor
  - Approximate Proposed Pipeline - Preferred Route
  - Wetland Determination Sample Point
  - Culvert
  - Photo Location
  - Field Delineated Waterway
  - Approximate Waterway
  - Field Delineated Waterway Area
  - Field Delineated Open Water
  - Approximate Open Water
  - Field Delineated Emergent Wetland
  - Field Delineated Forested Wetland
  - Approximate Wetland



**Notes**

- Coordinate System: NAD 1983 StatePlane Ohio North FIPS 3401 Feet
- Data Sources Include: Stantec, Columbia Gas, USGS, NADS, OGRIP
- Orthophotography: 2018 OGRIP







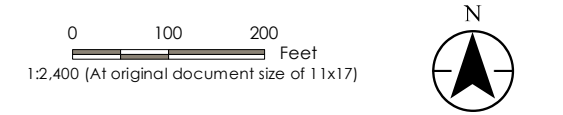
Figure No.  
**4**

Title  
**Wetland and Waterbody Delineation Map**

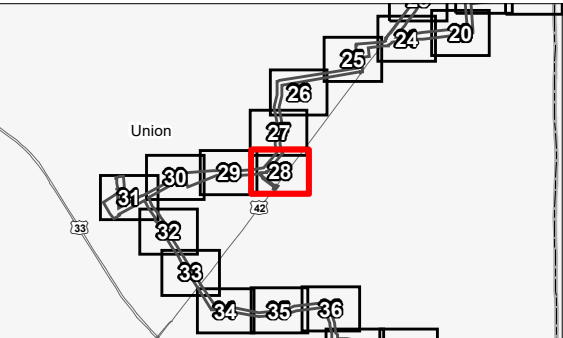
Client/Project  
Columbia Gas of Ohio  
Northern Columbus Loop Natural Gas Pipeline Project (Phase VII)  
Preferred Route Wetland and Waterbody Delineation

Project Location  
Union and Delaware Counties  
Ohio

193707055  
Prepared by JD on 2020-04-13  
Technical Review by MK on 2020-04-14  
Independent Review by MT on 2020-04-15



- Legend**
- Survey Corridor
  - Approximate Proposed Pipeline - Preferred Route
  - Wetland Determination Sample Point
  - Culvert
  - Photo Location
  - Field Delineated Waterway
  - Approximate Waterway
  - Field Delineated Waterway Area
  - Field Delineated Open Water
  - Approximate Open Water
  - Field Delineated Emergent Wetland
  - Field Delineated Forested Wetland
  - Approximate Wetland



**Notes**

- Coordinate System: NAD 1983 StatePlane Ohio North FIPS 3401 Feet
- Data Sources Include: Stantec, Columbia Gas, USGS, NADS, OGRIP
- Orthophotography: 2018 OGRIP







Figure No.  
**4**  
Title  
**Wetland and Waterbody Delineation Map**

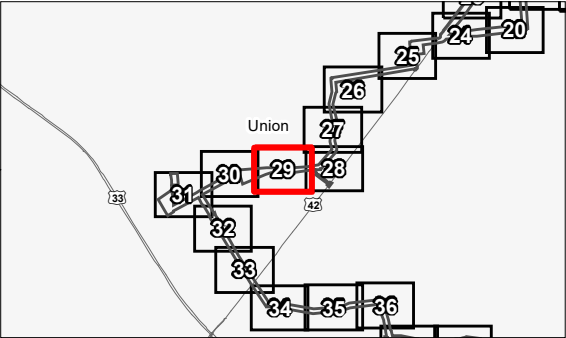
Client/Project  
Columbia Gas of Ohio  
Northern Columbus Loop Natural Gas Pipeline Project (Phase VII)  
Preferred Route Wetland and Waterbody Delineation

Project Location  
Union and Delaware Counties  
Ohio

193707055  
Prepared by JD on 2020-04-13  
Technical Review by MK on 2020-04-14  
Independent Review by MT on 2020-04-15



- Legend**
- Survey Corridor
  - Approximate Proposed Pipeline - Preferred Route
  - Wetland Determination Sample Point
  - Culvert
  - Photo Location
  - Field Delineated Waterway
  - Approximate Waterway
  - Field Delineated Waterway Area
  - Field Delineated Open Water
  - Approximate Open Water
  - Field Delineated Emergent Wetland
  - Field Delineated Forested Wetland
  - Approximate Wetland



**Notes**

1. Coordinate System: NAD 1983 StatePlane Ohio North FIPS 3401 Feet
2. Data Sources Include: Stantec, Columbia Gas, USGS, NADS, OGRIP
3. Orthophotography: 2018 OGRIP



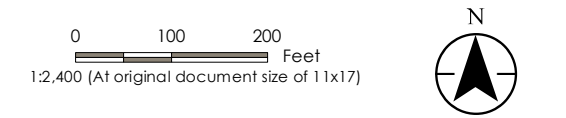




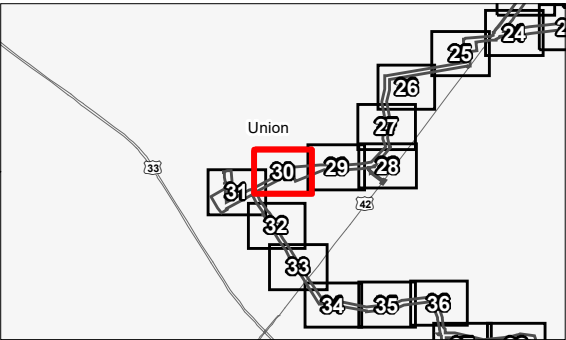
Figure No.  
**4**  
Title  
**Wetland and Waterbody Delineation Map**

Client/Project  
Columbia Gas of Ohio  
Northern Columbus Loop Natural Gas Pipeline Project (Phase VII)  
Preferred Route Wetland and Waterbody Delineation

Project Location  
Union and Delaware Counties  
Ohio  
193707055  
Prepared by JD on 2020-04-13  
Technical Review by MK on 2020-04-14  
Independent Review by MT on 2020-04-15



- Legend**
- Survey Corridor
  - Approximate Proposed Pipeline - Preferred Route
  - Wetland Determination Sample Point
  - Culvert
  - Photo Location
  - Field Delineated Waterway
  - Approximate Waterway
  - Field Delineated Waterway Area
  - Field Delineated Open Water
  - Approximate Open Water
  - Field Delineated Emergent Wetland
  - Field Delineated Forested Wetland
  - Approximate Wetland



**Notes**  
1. Coordinate System: NAD 1983 StatePlane Ohio North FIPS 3401 Feet  
2. Data Sources Include: Stantec, Columbia Gas, USGS, NADS, OGRIP  
3. Orthophotography: 2018 OGRIP





V:\1937\Activa\193707055\03\_data\ok\_csd\ok\mxd\Wetland Delineation\193707055.mxd      Prepared by JD on 2020-04-13      Revised: 2020-08-10 by: lbb@stantec.com  
Union and Delaware Counties      Technical Review by MK on 2020-04-14  
Ohio      Independent Review by MT on 2020-04-15



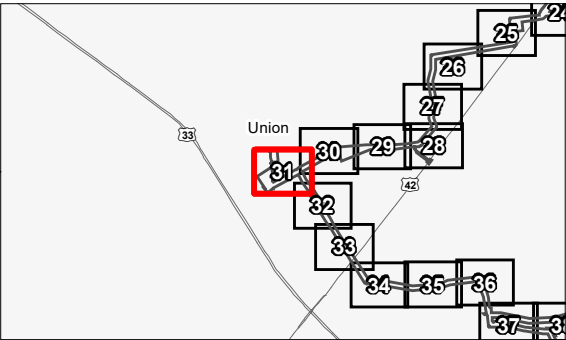
Figure No. **4**  
Title **Wetland and Waterbody Delineation Map**

Client/Project  
Columbia Gas of Ohio  
Northern Columbus Loop Natural Gas Pipeline Project (Phase VII)  
Preferred Route Wetland and Waterbody Delineation

Project Location 193707055  
Union and Delaware Counties Prepared by JD on 2020-04-13  
Ohio Technical Review by MK on 2020-04-14  
Independent Review by MT on 2020-04-15



- Legend**
- Survey Corridor
  - Approximate Proposed Pipeline - Preferred Route
  - Wetland Determination Sample Point
  - Culvert
  - Photo Location
  - Field Delineated Waterway
  - Approximate Waterway
  - Field Delineated Waterway Area
  - Field Delineated Open Water
  - Approximate Open Water
  - Field Delineated Emergent Wetland
  - Field Delineated Forested Wetland
  - Approximate Wetland



**Notes**

- Coordinate System: NAD 1983 StatePlane Ohio North FIPS 3401 Feet
- Data Sources Include: Stantec, Columbia Gas, USGS, NADS, OGRIP
- Orthophotography: 2018 OGRIP





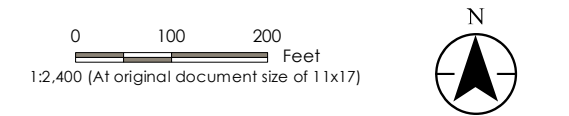
V:\1937\Activa\193707055\03\_data\ok\_csd\ok\mxd\Wetland Delineation\193707055.mxd      Prepared by JD on 2020-04-13      Reviewed: 2020-08-10 by: lbb@stantec.com  
Union and Delaware Counties      Technical Review by MK on 2020-04-14  
Ohio      Independent Review by MT on 2020-04-15



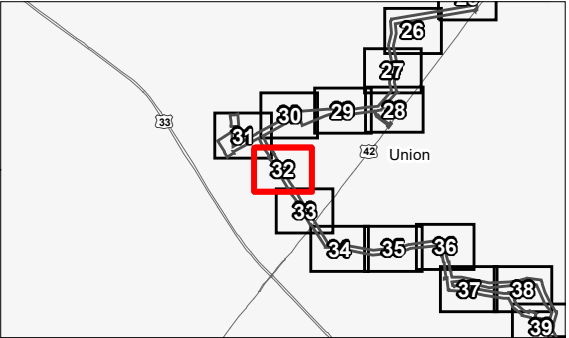
Figure No.  
**4**  
Title  
**Wetland and Waterbody Delineation Map**

Client/Project  
Columbia Gas of Ohio  
Northern Columbus Loop Natural Gas Pipeline Project (Phase VII)  
Preferred Route Wetland and Waterbody Delineation

Project Location  
Union and Delaware Counties      193707055  
Ohio      Prepared by JD on 2020-04-13  
Technical Review by MK on 2020-04-14  
Independent Review by MT on 2020-04-15



- Legend**
- Survey Corridor
  - Approximate Proposed Pipeline - Preferred Route
  - Wetland Determination Sample Point
  - Culvert
  - Photo Location
  - Field Delineated Waterway
  - Approximate Waterway
  - Field Delineated Waterway Area
  - Field Delineated Open Water
  - Approximate Open Water
  - Field Delineated Emergent Wetland
  - Field Delineated Forested Wetland
  - Approximate Wetland



**Notes**  
1. Coordinate System: NAD 1983 StatePlane Ohio North FIPS 3401 Feet  
2. Data Sources Include: Stantec, Columbia Gas, USGS, NADS, OGRIP  
3. Orthophotography: 2018 OGRIP





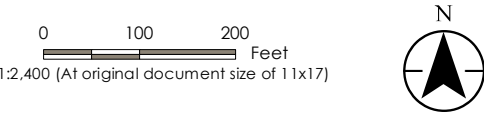
V:\1937\Activa\193707055\03\_data\ok\_csd\ok\mxd\Wetland Delineation\193707055.mxd      Revised: 2020-08-10 By: lbb@stantec.com



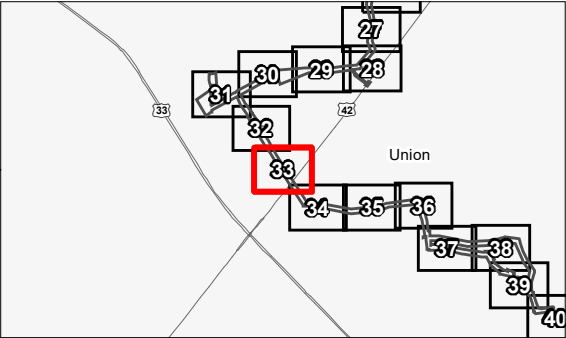
Figure No.  
**4**  
Title  
**Wetland and Waterbody Delineation Map**

Client/Project  
Columbia Gas of Ohio  
Northern Columbus Loop Natural Gas Pipeline Project (Phase VII)  
Preferred Route Wetland and Waterbody Delineation

Project Location  
Union and Delaware Counties  
Ohio  
193707055  
Prepared by JD on 2020-04-13  
Technical Review by MK on 2020-04-14  
Independent Review by MT on 2020-04-15



- Legend**
- Survey Corridor
  - Approximate Proposed Pipeline - Preferred Route
  - Wetland Determination Sample Point
  - Culvert
  - Photo Location
  - Field Delineated Waterway
  - Approximate Waterway
  - Field Delineated Waterway Area
  - Field Delineated Open Water
  - Approximate Open Water
  - Field Delineated Emergent Wetland
  - Field Delineated Forested Wetland
  - Approximate Wetland



**Notes**  
1. Coordinate System: NAD 1983 StatePlane Ohio North FIPS 3401 Feet  
2. Data Sources Include: Stantec, Columbia Gas, USGS, NADS, OGRIP  
3. Orthophotography: 2018 OGRIP





V:\1937\Activa\193707055\03\_data\ok\_cad\ok\mxd\Wetland Delineation\193707055.mxd      Revised: 2020-08-10 By: lbborete

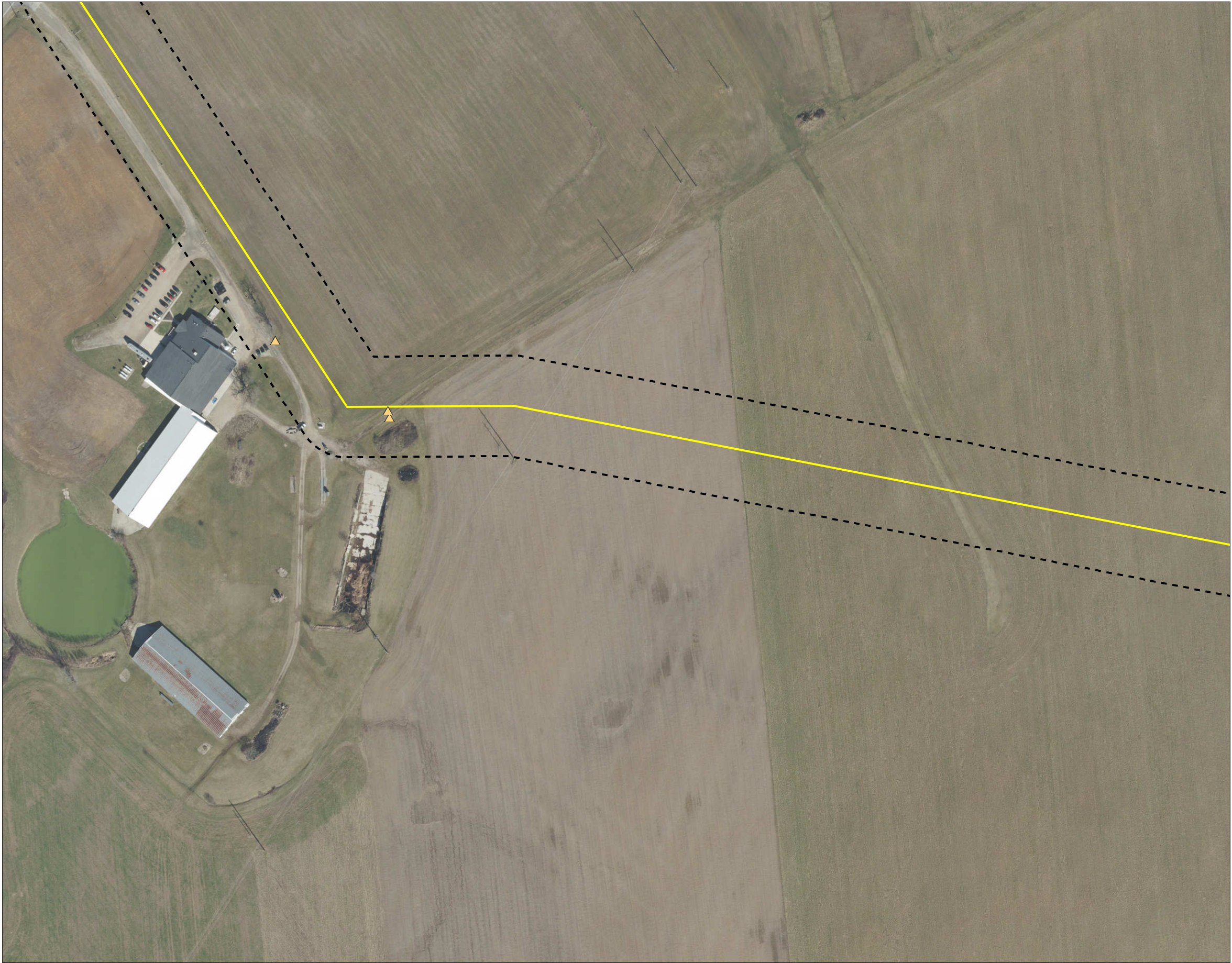
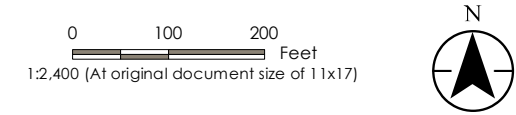


Figure No.  
**4**  
Title  
**Wetland and Waterbody Delineation Map**

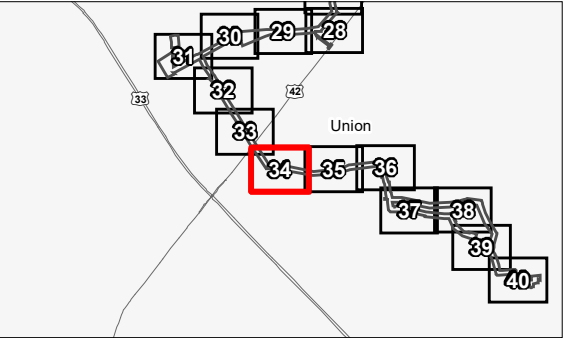
Client/Project  
Columbia Gas of Ohio  
Northern Columbus Loop Natural Gas Pipeline Project (Phase VII)  
Preferred Route Wetland and Waterbody Delineation

Project Location  
Union and Delaware Counties  
Ohio

193707055  
Prepared by JD on 2020-04-13  
Technical Review by MK on 2020-04-14  
Independent Review by MT on 2020-04-15



- Legend**
- Survey Corridor
  - Approximate Proposed Pipeline - Preferred Route
  - Wetland Determination Sample Point
  - Culvert
  - Photo Location
  - Field Delineated Waterway
  - Approximate Waterway
  - Field Delineated Waterway Area
  - Field Delineated Open Water
  - Approximate Open Water
  - Field Delineated Emergent Wetland
  - Field Delineated Forested Wetland
  - Approximate Wetland



**Notes**

1. Coordinate System: NAD 1983 StatePlane Ohio North FIPS 3401 Feet
2. Data Sources Include: Stantec, Columbia Gas, USGS, NADS, OGRIP
3. Orthophotography: 2018 OGRIP





V:\1937\Activa\193707055\03\_data\ok\_csd\ok\mxd\Wetland Delineation\193707055.mxd  
Revised: 2020-08-10 by: lbb@stantec.com

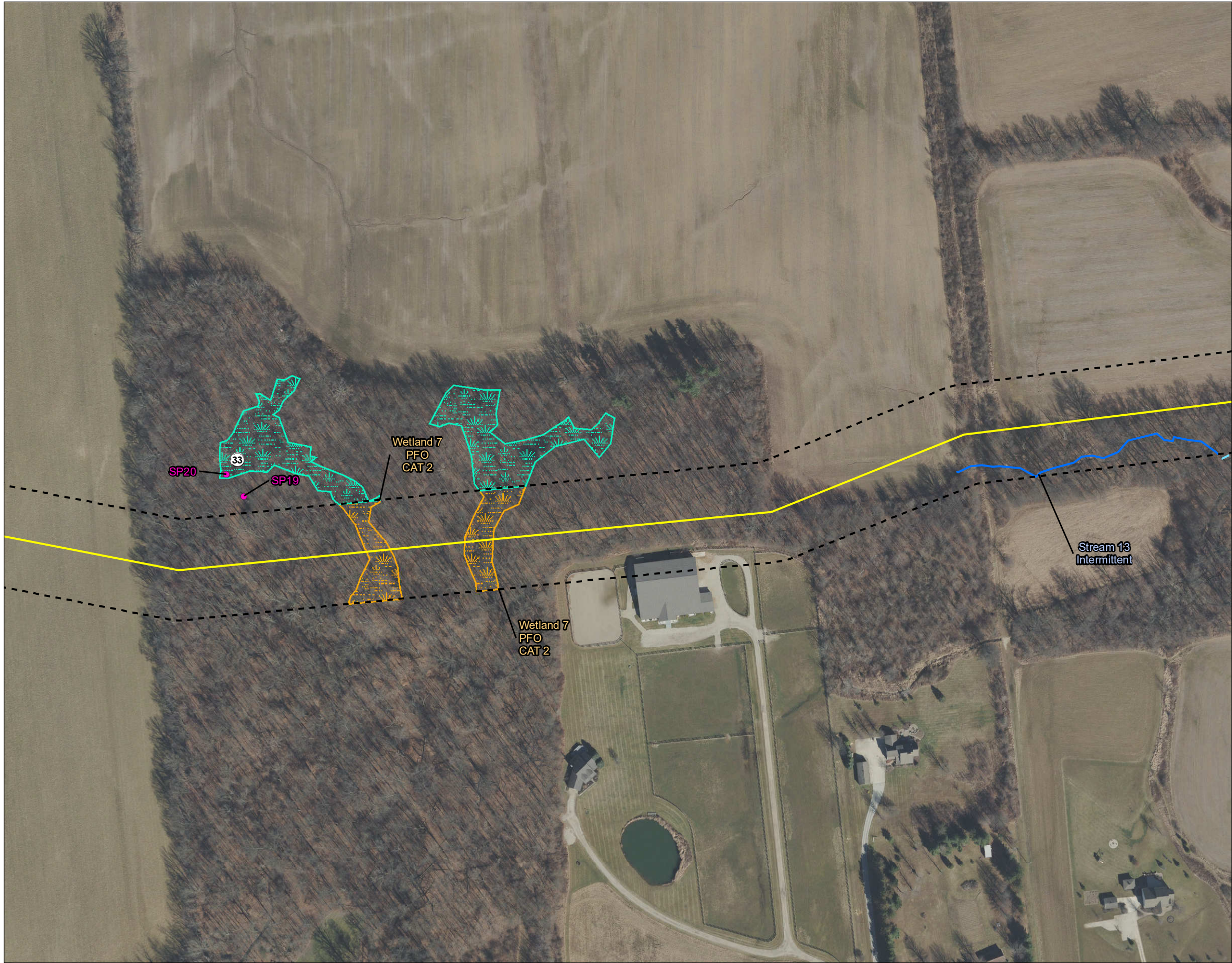
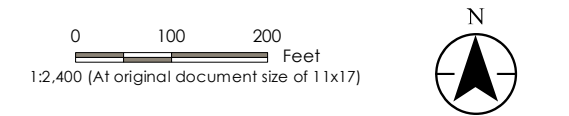


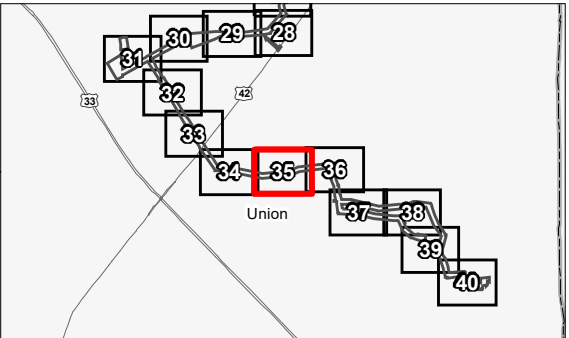
Figure No.  
**4**  
Title  
**Wetland and Waterbody Delineation Map**

Client/Project  
Columbia Gas of Ohio  
Northern Columbus Loop Natural Gas Pipeline Project (Phase VII)  
Preferred Route Wetland and Waterbody Delineation

Project Location  
Union and Delaware Counties  
Ohio  
193707055  
Prepared by JD on 2020-04-13  
Technical Review by MK on 2020-04-14  
Independent Review by MT on 2020-04-15



- Legend**
- Survey Corridor
  - Approximate Proposed Pipeline - Preferred Route
  - Wetland Determination Sample Point
  - Culvert
  - Photo Location
  - Field Delineated Waterway
  - Approximate Waterway
  - Field Delineated Waterway Area
  - Field Delineated Open Water
  - Approximate Open Water
  - Field Delineated Emergent Wetland
  - Field Delineated Forested Wetland
  - Approximate Wetland



**Notes**  
1. Coordinate System: NAD 1983 StatePlane Ohio North FIPS 3401 Feet  
2. Data Sources Include: Stantec, Columbia Gas, USGS, NADS, OGRIP  
3. Orthophotography: 2018 OGRIP





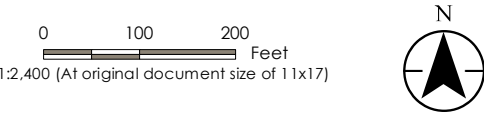
V:\1937\Activa\193707055\03\_data\ok\_csd\ok\mxd\Wetland Delineation\193707055.mxd 193707055.mxd 2020-08-10 10:11:00



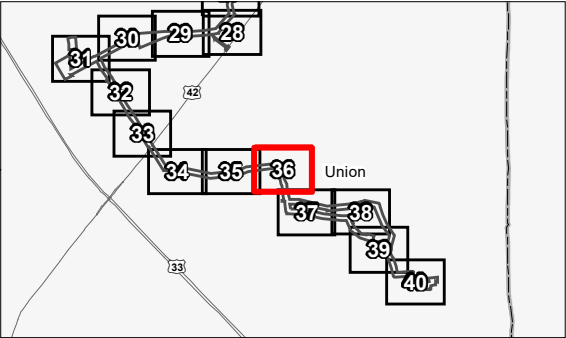
Figure No.  
**4**  
Title  
**Wetland and Waterbody Delineation Map**

Client/Project  
Columbia Gas of Ohio  
Northern Columbus Loop Natural Gas Pipeline Project (Phase VII)  
Preferred Route Wetland and Waterbody Delineation

Project Location  
Union and Delaware Counties  
Ohio  
193707055  
Prepared by JD on 2020-04-13  
Technical Review by MK on 2020-04-14  
Independent Review by MT on 2020-04-15



- Legend**
- Survey Corridor
  - Approximate Proposed Pipeline - Preferred Route
  - Wetland Determination Sample Point
  - Culvert
  - Photo Location
  - Field Delineated Waterway
  - Approximate Waterway
  - Field Delineated Waterway Area
  - Field Delineated Open Water
  - Approximate Open Water
  - Field Delineated Emergent Wetland
  - Field Delineated Forested Wetland
  - Approximate Wetland



- Notes**
- Coordinate System: NAD 1983 StatePlane Ohio North FIPS 3401 Feet
  - Data Sources Include: Stantec, Columbia Gas, USGS, NADS, OGRIP
  - Orthophotography: 2018 OGRIP





V:\1937\Activa\193707055\03\_data\ok\_csd\wet\mxd\Wetland Delineation\193707055.mxd  
Revised: 2020-08-10 by: lbborete

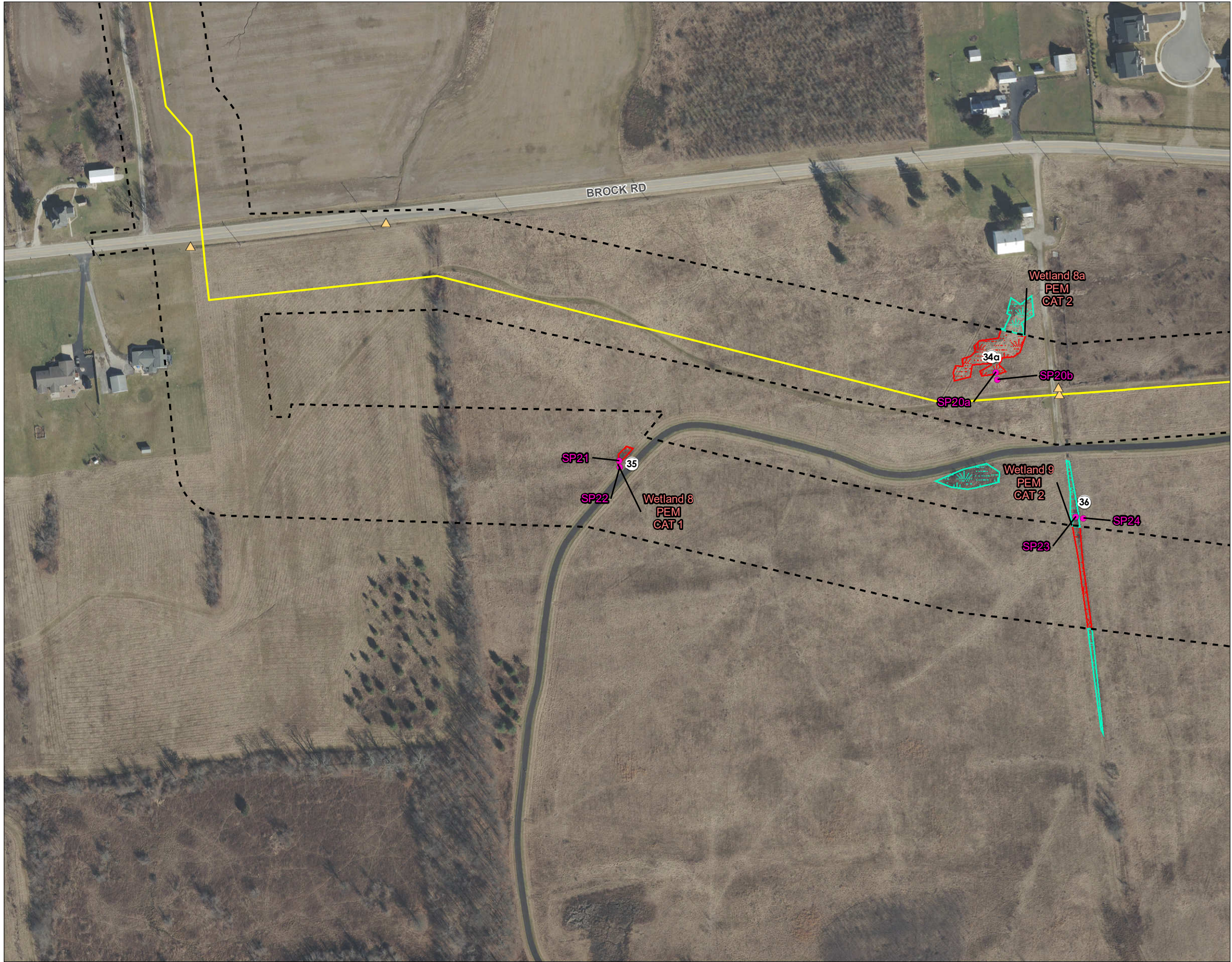
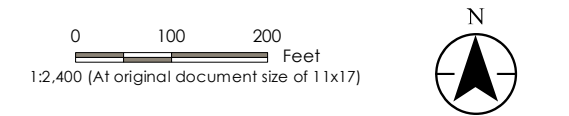


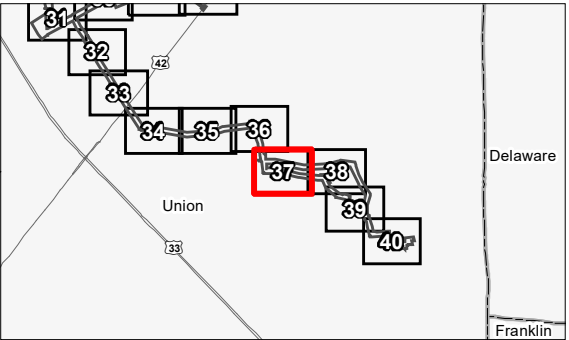
Figure No.  
**4**  
Title  
**Wetland and Waterbody Delineation Map**

Client/Project  
Columbia Gas of Ohio  
Northern Columbus Loop Natural Gas Pipeline Project (Phase VII)  
Preferred Route Wetland and Waterbody Delineation

Project Location  
Union and Delaware Counties  
Ohio  
193707055  
Prepared by JD on 2020-04-13  
Technical Review by MK on 2020-04-14  
Independent Review by MT on 2020-04-15



- Legend**
- Survey Corridor
  - Approximate Proposed Pipeline - Preferred Route
  - Wetland Determination Sample Point
  - Culvert
  - Photo Location
  - Field Delineated Waterway
  - Approximate Waterway
  - Field Delineated Waterway Area
  - Field Delineated Open Water
  - Approximate Open Water
  - Field Delineated Emergent Wetland
  - Field Delineated Forested Wetland
  - Approximate Wetland



**Notes**

- Coordinate System: NAD 1983 StatePlane Ohio North FIPS 3401 Feet
- Data Sources Include: Stantec, Columbia Gas, USGS, NADS, OGRIP
- Orthophotography: 2018 OGRIP





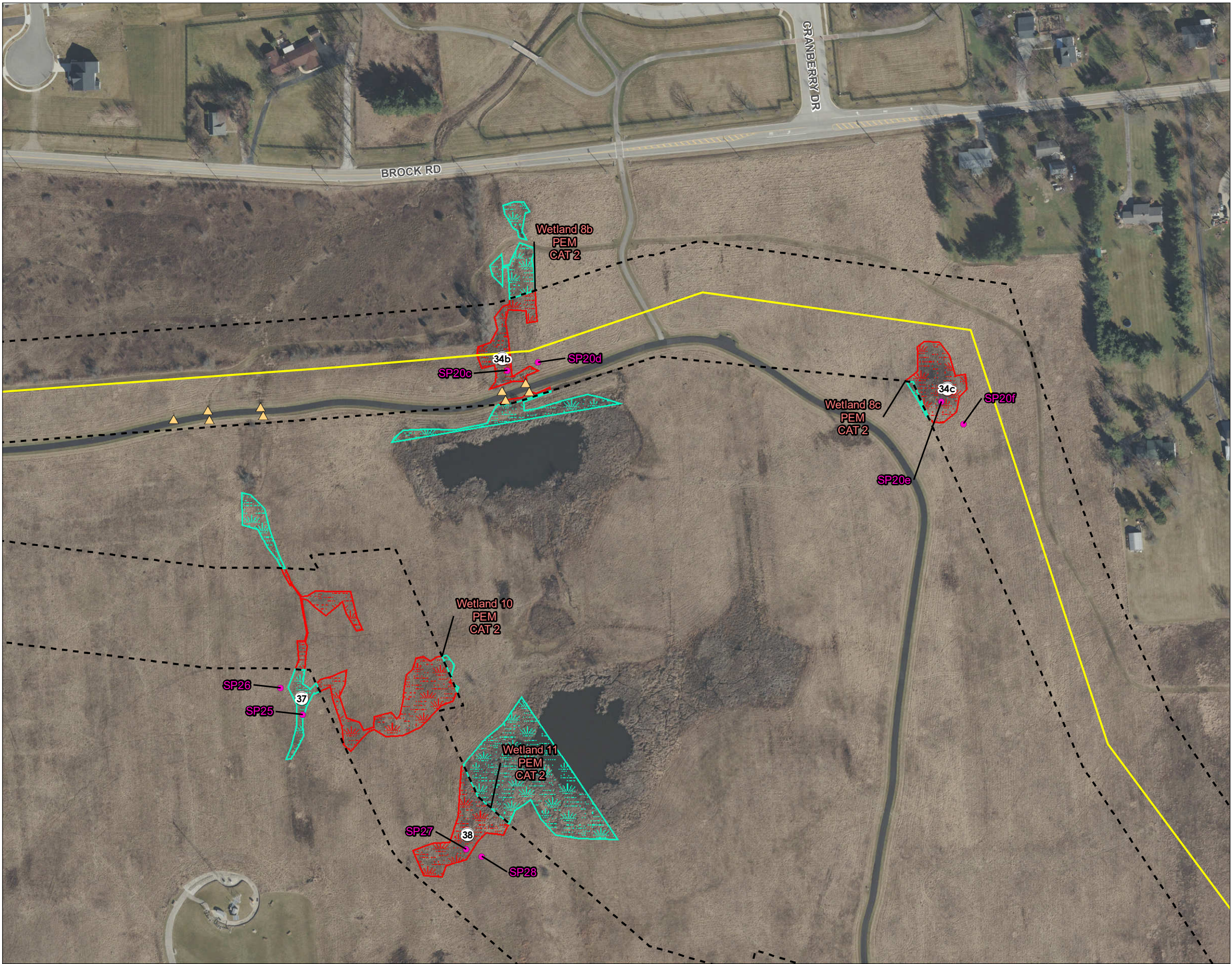


Figure No.  
**4**  
Title  
**Wetland and Waterbody Delineation Map**

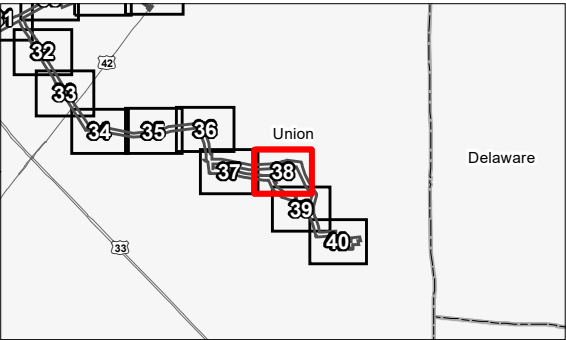
Client/Project  
Columbia Gas of Ohio  
Northern Columbus Loop Natural Gas Pipeline Project (Phase VII)  
Preferred Route Wetland and Waterbody Delineation

Project Location  
Union and Delaware Counties  
Ohio

193707055  
Prepared by JD on 2020-04-13  
Technical Review by MK on 2020-04-14  
Independent Review by MT on 2020-04-15



- Legend**
- Survey Corridor
  - Approximate Proposed Pipeline - Preferred Route
  - Wetland Determination Sample Point
  - Culvert
  - Photo Location
  - Field Delineated Waterway
  - Approximate Waterway
  - Field Delineated Waterway Area
  - Field Delineated Open Water
  - Approximate Open Water
  - Field Delineated Emergent Wetland
  - Field Delineated Forested Wetland
  - Approximate Wetland



**Notes**

1. Coordinate System: NAD 1983 StatePlane Ohio North FIPS 3401 Feet
2. Data Sources Include: Stantec, Columbia Gas, USGS, NADS, OGRIP
3. Orthophotography: 2018 OGRIP





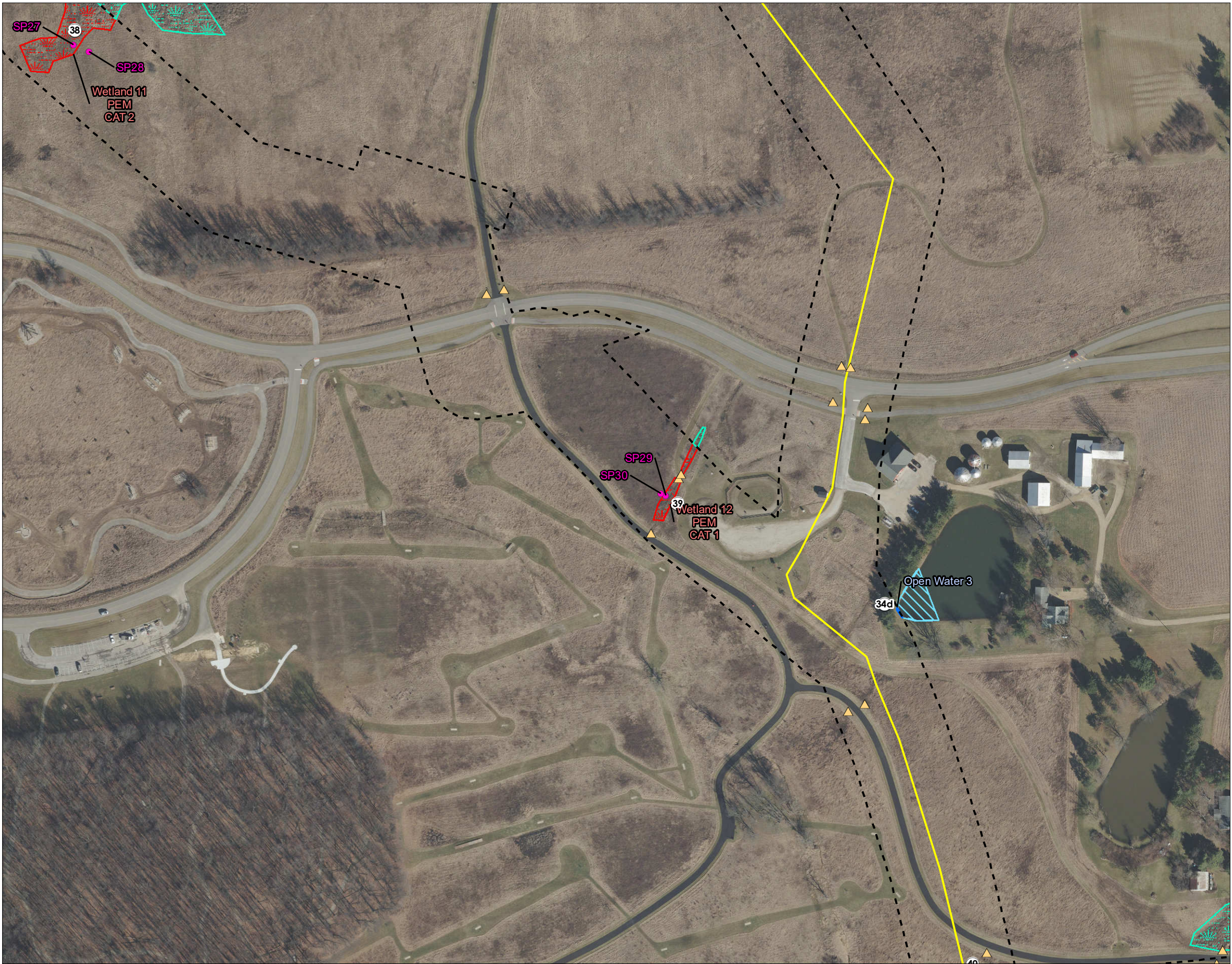
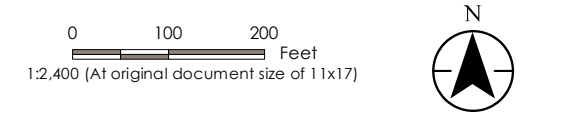


Figure No.  
**4**  
Title  
**Wetland and Waterbody Delineation Map**

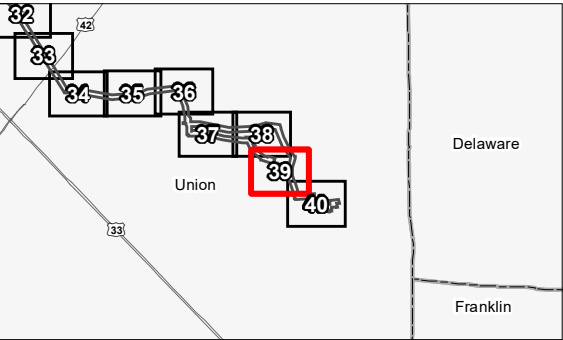
Client/Project  
Columbia Gas of Ohio  
Northern Columbus Loop Natural Gas Pipeline Project (Phase VII)  
Preferred Route Wetland and Waterbody Delineation

Project Location  
Union and Delaware Counties  
Ohio

193707055  
Prepared by JD on 2020-04-13  
Technical Review by MK on 2020-04-14  
Independent Review by MT on 2020-04-15



- Legend**
- Survey Corridor
  - Approximate Proposed Pipeline - Preferred Route
  - Wetland Determination Sample Point
  - Culvert
  - Photo Location
  - Field Delineated Waterway
  - Approximate Waterway
  - Field Delineated Waterway Area
  - Field Delineated Open Water
  - Approximate Open Water
  - Field Delineated Emergent Wetland
  - Field Delineated Forested Wetland
  - Approximate Wetland



**Notes**

- Coordinate System: NAD 1983 StatePlane Ohio North FIPS 3401 Feet
- Data Sources Include: Stantec, Columbia Gas, USGS, NADS, OGRIP
- Orthophotography: 2018 OGRIP



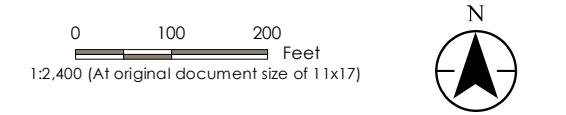




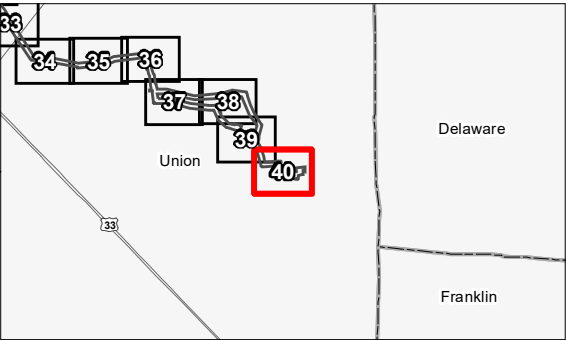
Figure No.  
**4**  
Title  
**Wetland and Waterbody Delineation Map**

Client/Project  
Columbia Gas of Ohio  
Northern Columbus Loop Natural Gas Pipeline Project (Phase VII)  
Preferred Route Wetland and Waterbody Delineation

Project Location  
Union and Delaware Counties  
Ohio  
193707055  
Prepared by JD on 2020-04-13  
Technical Review by MK on 2020-04-14  
Independent Review by MT on 2020-04-15



- Legend**
- Survey Corridor
  - Approximate Proposed Pipeline - Preferred Route
  - Wetland Determination Sample Point
  - Culvert
  - Photo Location
  - Field Delineated Waterway
  - Approximate Waterway
  - Field Delineated Waterway Area
  - Field Delineated Open Water
  - Approximate Open Water
  - Field Delineated Emergent Wetland
  - Field Delineated Forested Wetland
  - Approximate Wetland



- Notes**
- Coordinate System: NAD 1983 StatePlane Ohio North FIPS 3401 Feet
  - Data Sources Include: Stantec, Columbia Gas, USGS, NADS, OGRIP
  - Orthophotography: 2018 OGRIP

