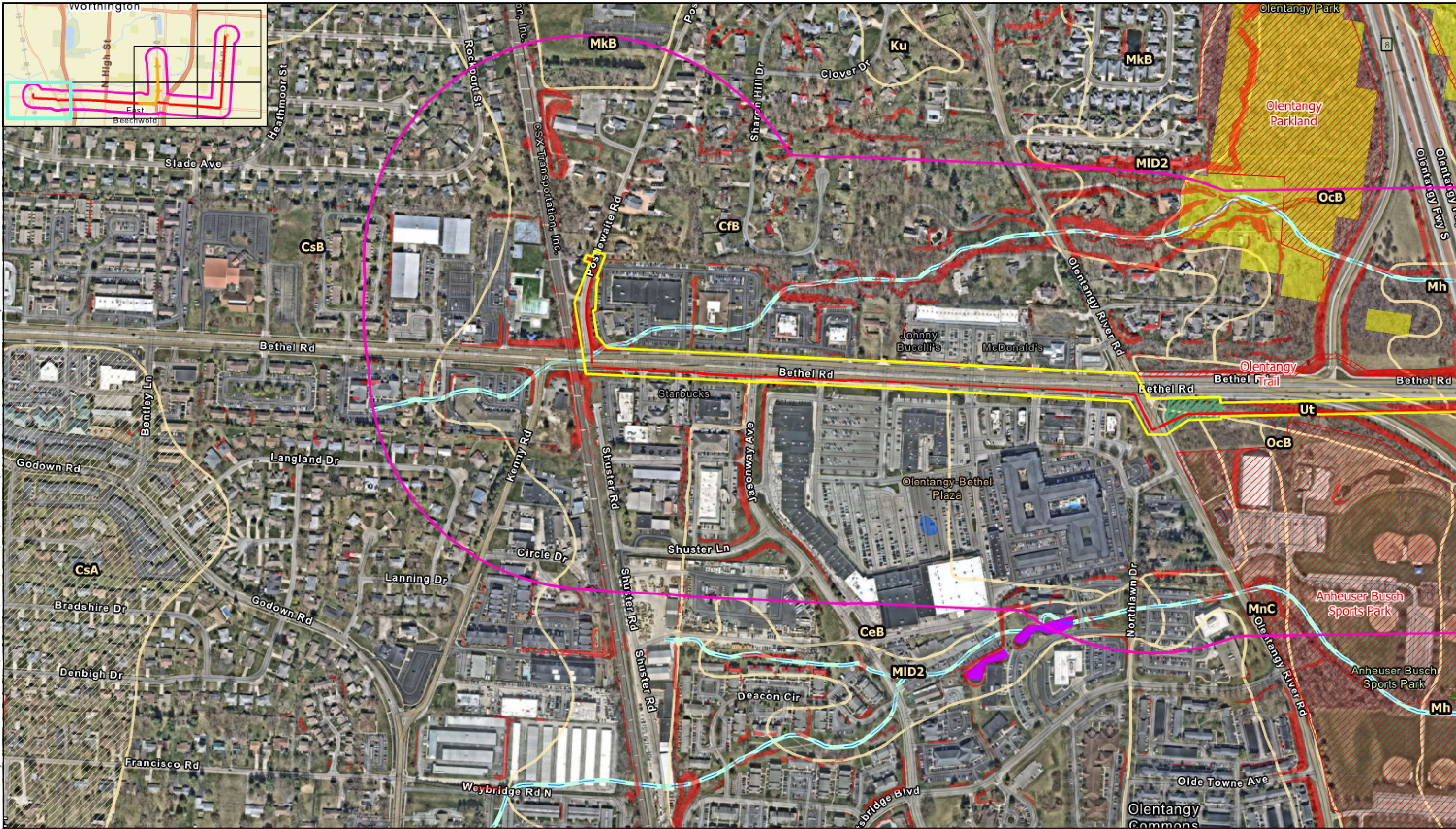


FIGURE 12

Ecological Information Map



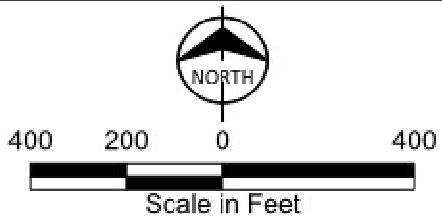
Service Layer Credits: Hybrid Reference Layer: Sources: Esri, TomTom, Garmin, FAO, NOAA, USGS, © OpenStreetMap contributors, and the GIS User Community

- 1,000 ft. Boundary
- Main Pipeline
- Lateral Pipeline
- Limits of Disturbance
- Protected Areas Database
- NLCD Deciduous Forest
- Vegetation Clearing (Maintained Corridor)

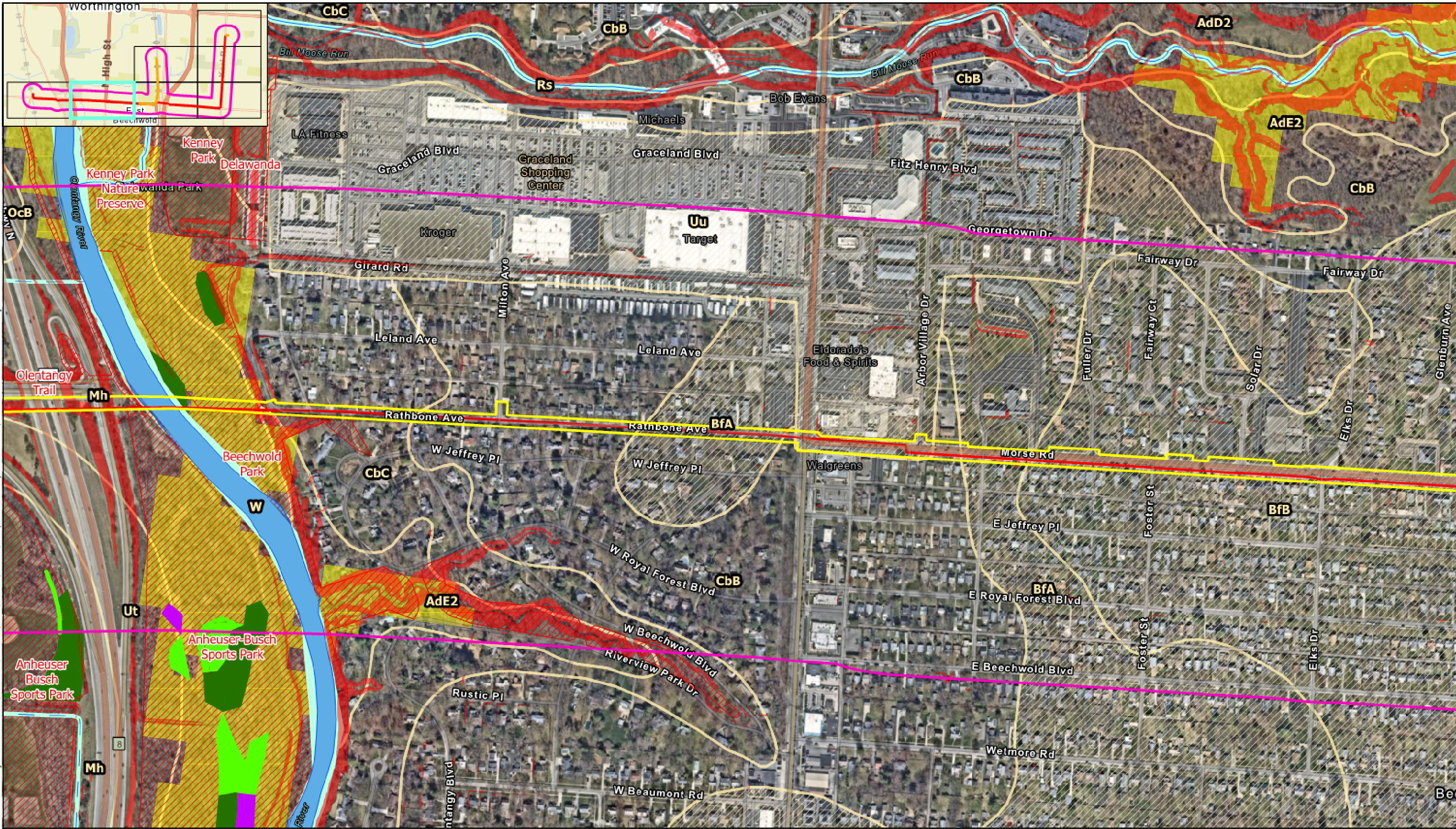
- Soil Erodibility**
- Low to Medium Erodibility (K-factor 0.25-0.39)
- High Erodibility (K-factor 0.40-0.45)
- Slopes \geq 12%

- National Hydrography Dataset**
- Perennial
- Ephemeral/Intermittent
- Waterbody

- National Wetland Inventory Features**
- Palustrine Emergent (PEM)
- Palustrine Forested (PFO)
- Palustrine Unconsolidated Bottom (PUB)
- Lake
- Riverine



Ecological Information Map
 NISource NCHP Woodward Park
 Pipeline Replacement Project
 Franklin County, OH
 Page 1 of 7

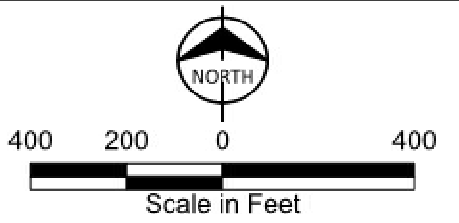


- 1,000 ft. Boundary
- Main Pipeline
- Lateral Pipeline
- Limits of Disturbance
- Protected Areas Database
- NLCD Deciduous Forest
- Vegetation Clearing (Maintained Corridor)

- Soil Erodibility**
- Low to Medium Erodibility (K-factor 0.25-0.39)
- High Erodibility (K-factor 0.40-0.45)
- Slopes \geq 12%

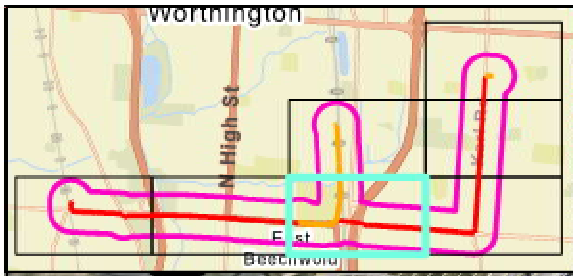
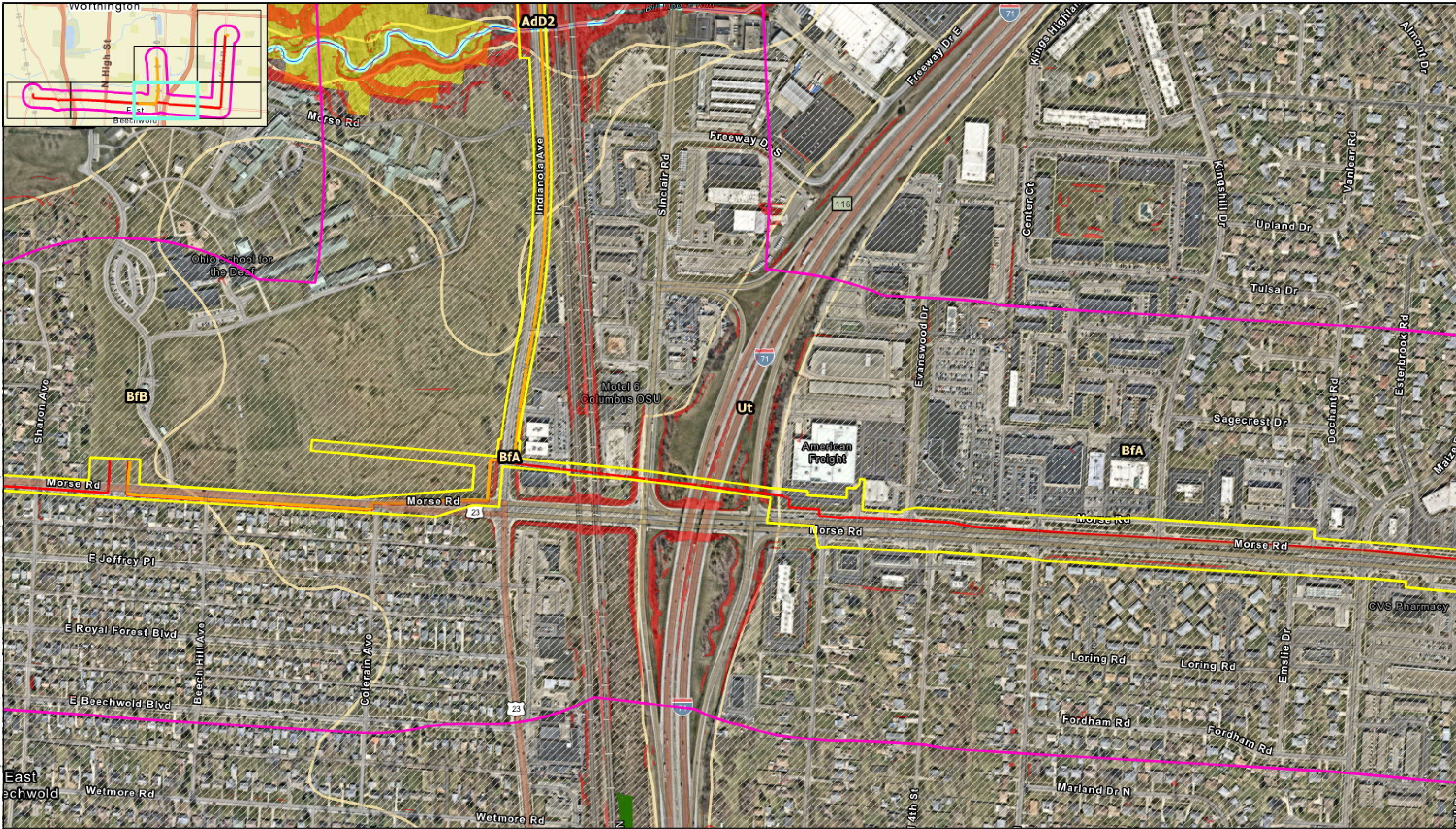
- National Hydrography Dataset**
- Perennial
- Ephemeral/Intermittent
- Waterbody

- National Wetland Inventory Features**
- Palustrine Emergent (PEM)
- Palustrine Forested (PFO)
- Palustrine Unconsolidated Bottom (PUB)
- Lake
- Riverine



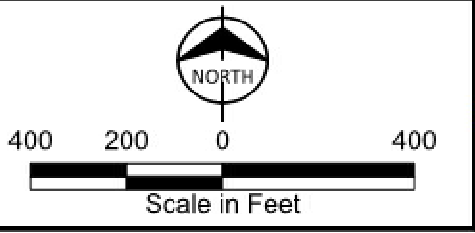
Ecological Information Map
 NiSource NCHP Woodward Park
 Pipeline Replacement Project
 Franklin County, OH
 Page 2 of 7

Service Layer Credits: Hybrid Reference Layer: Sources: Esri, TomTom, Garmin, FAO, NOAA, USGS, © OpenStreetMap contributors, and the GIS User Community

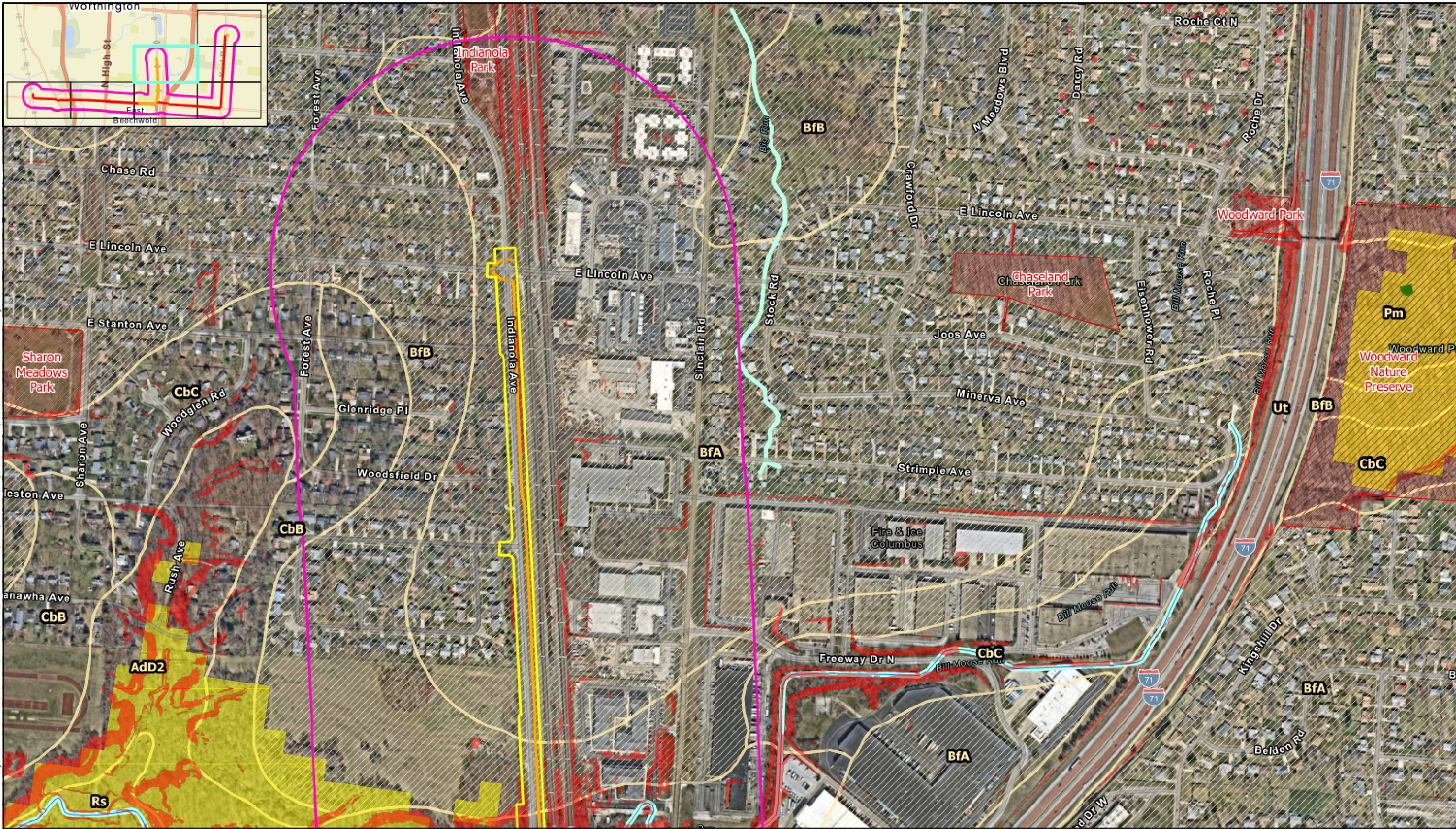


Service Layer Credits: Hybrid Reference Layer: Sources: Esri, TomTom, Garmin, FAO, NOAA, USGS, © OpenStreetMap contributors, and the GIS User Community

<ul style="list-style-type: none"> 1,000 ft. Boundary Main Pipeline Lateral Pipeline Limits of Disturbance Protected Areas Database NLCD Deciduous Forest Vegetation Clearing (Maintained Corridor) 	<p>Soil Erodibility</p> <ul style="list-style-type: none"> Low to Medium Erodibility (K-factor 0.25-0.39) High Erodibility (K-factor 0.40-0.45) Slopes \geq 12% 	<p>National Hydrography Dataset</p> <ul style="list-style-type: none"> Perennial Ephemeral/Intermittent Waterbody 	<p>National Wetland Inventory Features</p> <ul style="list-style-type: none"> Palustrine Emergent (PEM) Palustrine Forested (PFO) Palustrine Unconsolidated Bottom (PUB) Lake Riverine
--	---	---	---



Ecological Information Map
 NISource NCHP Woodward Park
 Pipeline Replacement Project
 Franklin County, OH
 Page 3 of 7

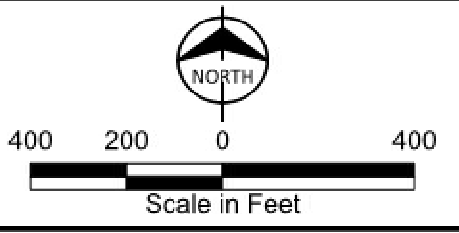


- 1,000 ft. Boundary
- Main Pipeline
- Lateral Pipeline
- Limits of Disturbance
- Protected Areas Database
- NLCD Deciduous Forest
- Vegetation Clearing (Maintained Corridor)

- Soil Erodibility**
- Low to Medium Erodibility (K-factor 0.25-0.39)
- High Erodibility (K-factor 0.40-0.45)
- Slopes \geq 12%

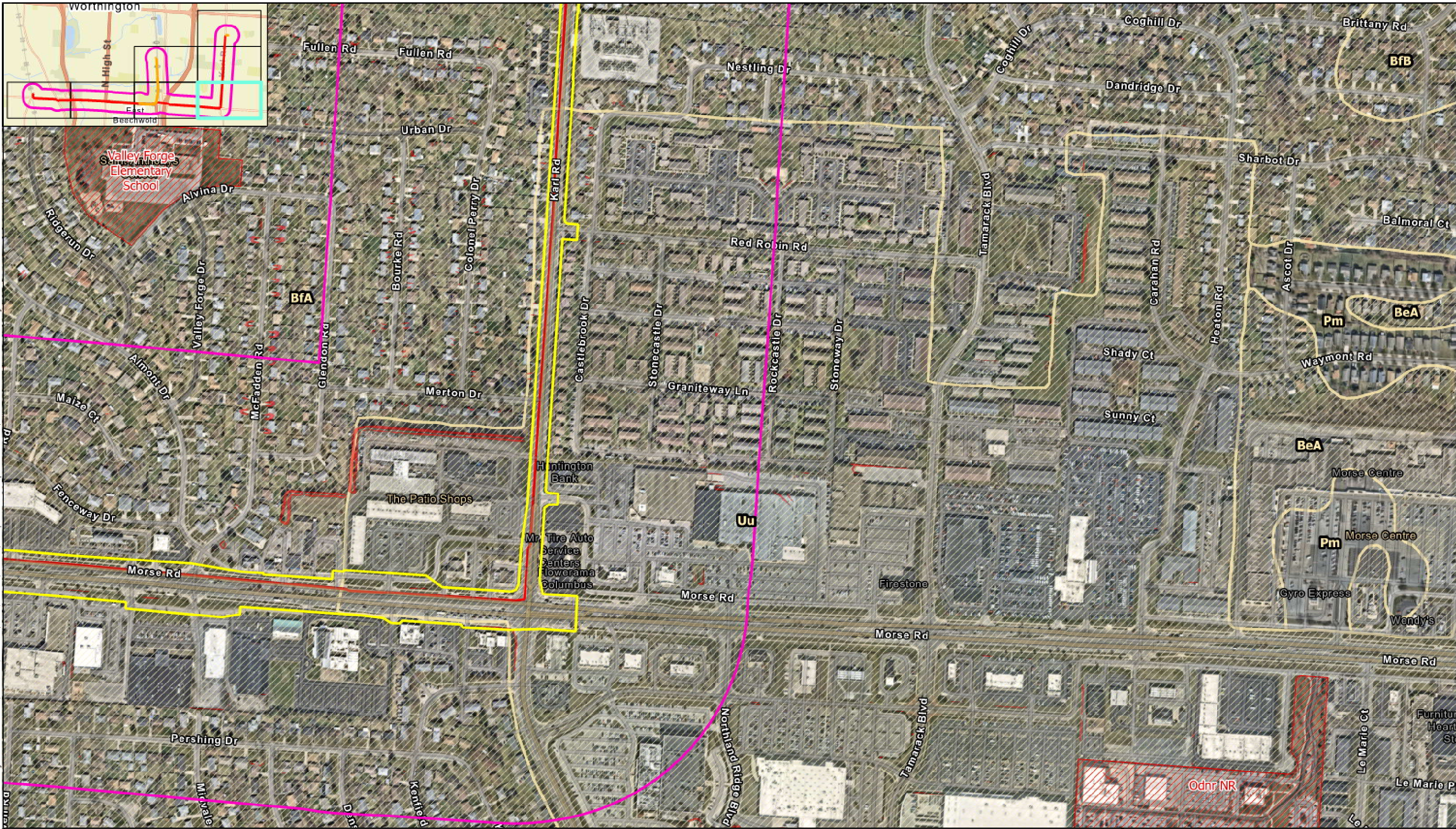
- National Hydrography Dataset**
- Perennial
- Ephemeral/Intermittent
- Waterbody

- National Wetland Inventory Features**
- Palustrine Emergent (PEM)
- Palustrine Forested (PFO)
- Palustrine Unconsolidated Bottom (PUB)
- Lake
- Riverine



Ecological Information Map
 NISource NCHP Woodward Park
 Pipeline Replacement Project
 Franklin County, OH
 Page 4 of 7

Service Layer Credits: Hybrid Reference Layer: Sources: Esri, TomTom, Garmin, FAO, NOAA, USGS, © OpenStreetMap contributors, and the GIS User Community



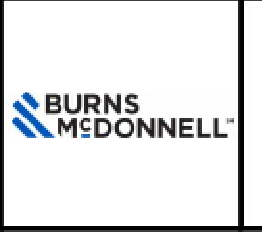
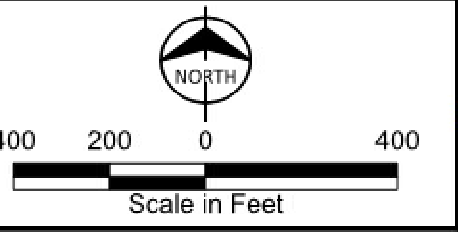
Service Layer Credits: Hybrid Reference Layer: Sources: Esri, TomTom, Garmin, FAO, NOAA, USGS, © OpenStreetMap contributors, and the GIS User Community

- 1,000 ft. Boundary
- Main Pipeline
- Lateral Pipeline
- Limits of Disturbance
- Protected Areas Database
- NLCD Deciduous Forest
- Vegetation Clearing (Maintained Corridor)

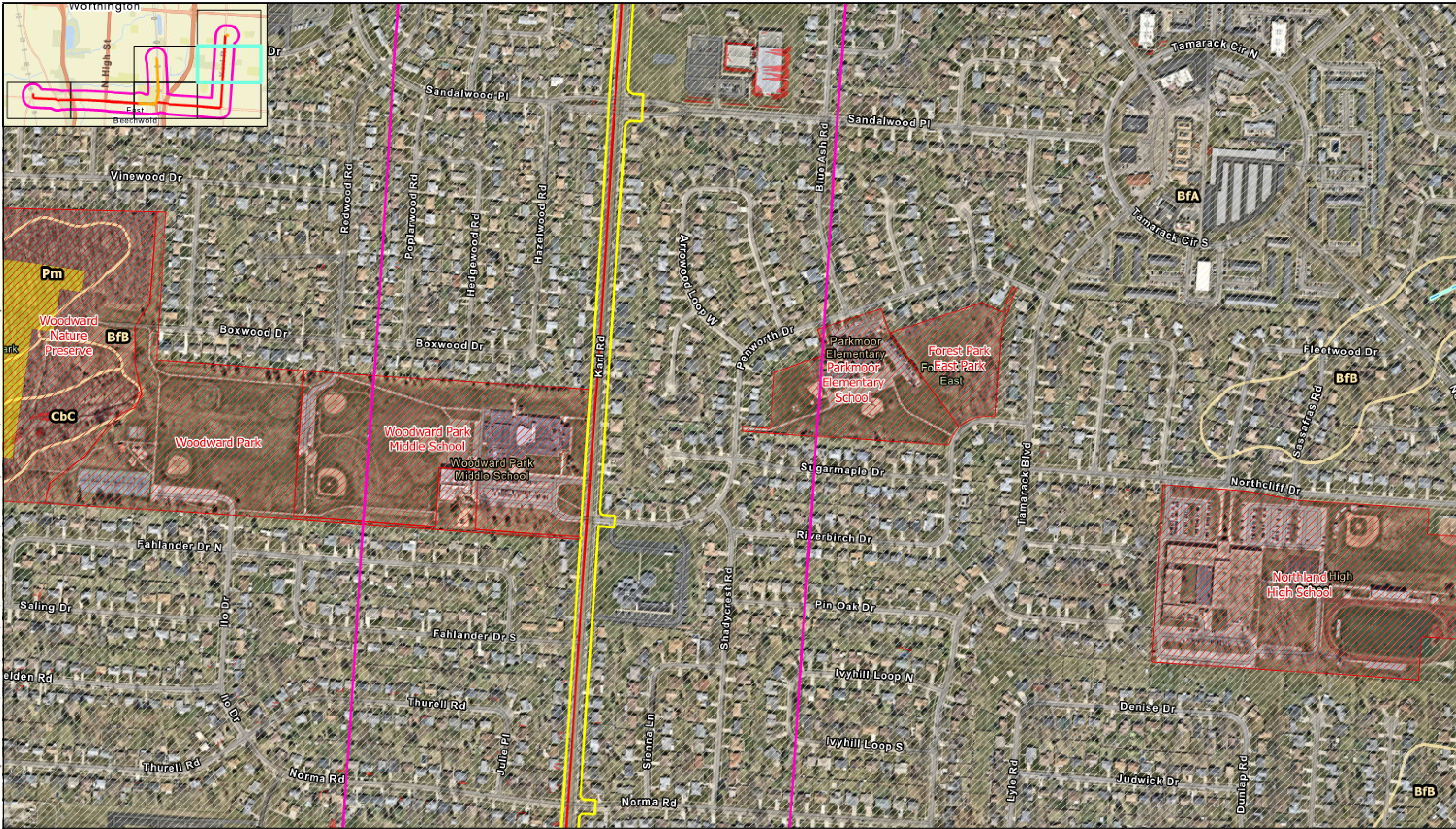
- Soil Erodibility**
- Low to Medium Erodibility (K-factor 0.25-0.39)
 - High Erodibility (K-factor 0.40-0.45)
 - Slopes \geq 12%

- National Hydrography Dataset**
- Perennial
 - Ephemeral/Intermittent
 - Waterbody

- National Wetland Inventory Features**
- Palustrine Emergent (PEM)
 - Palustrine Forested (PFO)
 - Palustrine Unconsolidated Bottom (PUB)
 - Lake
 - Riverine

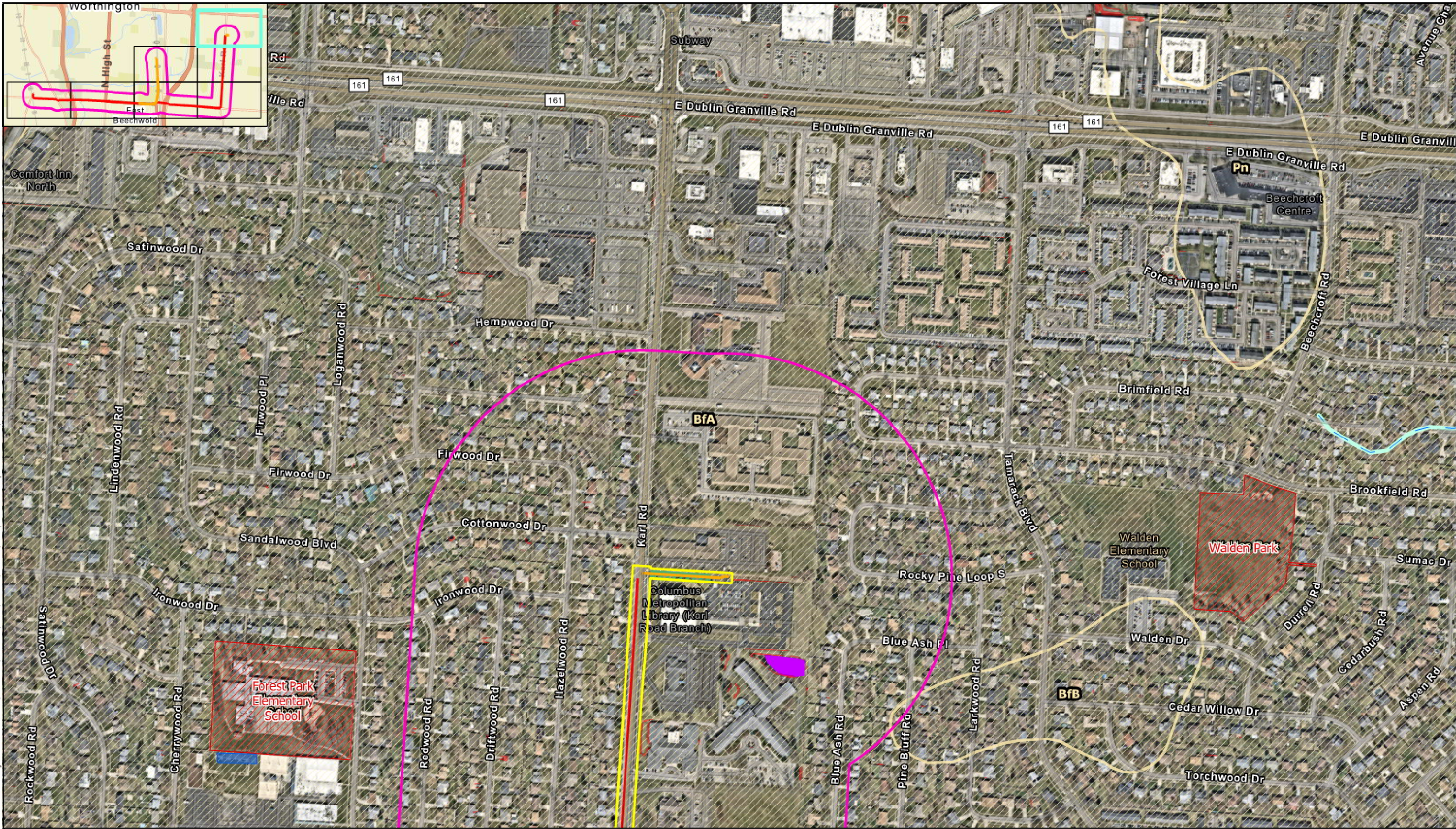


Ecological Information Map
 NiSource NCHP Woodward Park
 Pipeline Replacement Project
 Franklin County, OH
 Page 5 of 7



Service Layer Credits: Hybrid Reference Layer: Sources: Esri, TomTom, Garmin, FAO, NOAA, USGS, © OpenStreetMap contributors, and the GIS User Community

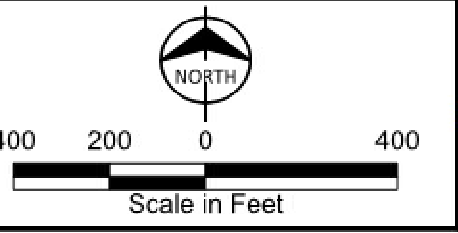
<ul style="list-style-type: none"> 1,000 ft. Boundary Main Pipeline Lateral Pipeline Limits of Disturbance Protected Areas Database NLCD Deciduous Forest Vegetation Clearing (Maintained Corridor) 	<p>Soil Erodibility</p> <ul style="list-style-type: none"> Low to Medium Erodibility (K-factor 0.25-0.39) High Erodibility (K-factor 0.40-0.45) Slopes \geq 12% 	<p>National Hydrography Dataset</p> <ul style="list-style-type: none"> Perennial Ephemeral/Intermittent Waterbody 	<p>National Wetland Inventory Features</p> <ul style="list-style-type: none"> Palustrine Emergent (PEM) Palustrine Forested (PFO) Palustrine Unconsolidated Bottom (PUB) Lake Riverine 	<p>Scale in Feet</p>		<p>Ecological Information Map NiSource NCHP Woodward Park Pipeline Replacement Project Franklin County, OH Page 6 of 7</p>
---	---	--	--	----------------------	--	--



- 1,000 ft. Boundary
 - Main Pipeline
 - Lateral Pipeline
 - Limits of Disturbance
 - Protected Areas Database
 - NLCD Deciduous Forest
 - Vegetation Clearing (Maintained Corridor)
- Soil Erodibility**
 - Low to Medium Erodibility (K-factor 0.25-0.39)
 - High Erodibility (K-factor 0.40-0.45)
 - Slopes \geq 12%

- National Hydrography Dataset**
- Perennial
- Ephemeral/Intermittent
- Waterbody

- National Wetland Inventory Features**
- Palustrine Emergent (PEM)
- Palustrine Forested (PFO)
- Palustrine Unconsolidated Bottom (PUB)
- Lake
- Riverine



Ecological Information Map
 NiSource NCHP Woodward Park
 Pipeline Replacement Project
 Franklin County, OH
 Page 7 of 7

Service Layer Credits: Hybrid Reference Layer: Sources: Esri, TomTom, Garmin, FAO, NOAA, USGS, © OpenStreetMap contributors, and the GIS User Community