

## Memorandum

To: NiSource Inc.

From: Jacqueline M. McCort

Date: July 7, 2023

Subject: Threatened and Endangered Species Review  
Intel Project Slice

Project No.: 22011510A

---

On behalf of NiSource Inc., Colliers Engineering & Design (CED) conducted a Threatened and Endangered Species Desktop Review for the NiSource Intel Project located north of Columbus, Ohio within Delaware, Licking, and Franklin Counties (hereinafter referred to as "Project Study Area"). The proposed Project will be approximately 21,891 feet (4.15 miles) in length and consist of construction of a Point of Delivery (POD) Station with launcher/receiver facilities, a 12-inch diameter high pressure gas distribution pipeline, a district regulator station (DS), and one new customer regulator/meter station (GMB) at the Intel (customer) plant. The Project will allow NiSource Inc. to provide required natural gas for Intel's Dragonfly Project.

The Project Study Area is comprised of a 100-foot-wide survey corridor centered on the proposed pipeline alignment for 4.15 miles. The Project Study Area begins at latitudinal coordinates 40.139857 N and longitudinal coordinates -82.761203 W and ends at coordinates 40.118148 N and longitudinal coordinates -82.722787 W. Access to the Project Study Area can be achieved from Tippet Road, Johnstown Utica Road, Beech Road NW, and Miller Road NW. The Project Study Area is in Johnstown, Ohio (Figure 1, **Appendix A**). Based on a review of *Jersey*, *New Albany*, and *Sunbury Ohio* Quadrangle USGS Map and historical aerial photographs, the Project Study Area appears to be mainly residential properties and agricultural land. The Project Study Area is relatively flat with elevations that range from 1150 to 1200 feet above mean sea level (MSL). The Project Study Area is in the Eastern Corn Belt Plains ecoregion.

Some populations of plants and animals are declining because of natural forces or their inability to coexist with human activity. Plants and animals with Endangered or Threatened status are protected under the Endangered Species Act (ESA) of 1973 (16 US 1531 et seq.). Federal Species of Concern (FSC) are species not legally protected under the ESA and are not subject to any of its provisions, including Section 7, until they are formally proposed or listed as Endangered or Threatened.

CED conducted a threatened and endangered species review to become aware of the potential presence of Endangered or Threatened listed species that are located within the Project Study Area or within the vicinity. The Ohio Department of Natural Resources (ODNR) web page was reviewed to determine species that have State protection in Delaware, Licking, and Franklin Counties, within the

state of Ohio. Tables 1, 2, and 3 list species that, as of June 23, 2023, have State protection in Delaware, Licking, and Franklin Counties, in the state of Ohio. In addition to the review of online county species lists, CED submitted a request on July 7, 2023, to the ODNR requesting an environmental review of the potential State-listed species that could occur within the project limits. The ODNR response, which is forthcoming, should indicate there are no records of state or federally listed plants or animals within one mile of the specified project area (**Appendix B, pending**).

In addition, a refined search, using the USFWS Information for Planning and Consultation (IPaC) database, was also reviewed to provide a more detailed list of species and critical habitat under Federal USFWS jurisdiction that are known or expected to occur within the Project Study Area. Table 4 provides the USFWS IPaC Species List for Project Study Area. The USFWS IPaC Species List is provided in **Appendix C**.

**Table 1. ODNR Delaware County Species List as of June 23, 2023**

Common Name	Scientific Name	State Status	Federal Status
<b>Mammals</b>			
<b>Northern Long-eared Bat</b>	<i>Myotis septentrionalis</i>	T	T
<b>Big Brown Bat</b>	<i>Eptesicus fuscus</i>	SC	-
<b>Red Bat</b>	<i>Lasiurus borealis</i>	SC	-
<b>Prairie Vole</b>	<i>Microtus ochrogaster</i>	SC	-
<b>Little Brown Bat</b>	<i>Myotis lucifugus</i>	SC	-
<b>Tri-colored Bat</b>	<i>Perimyotis subflavus</i>	SC	-
<b>Deer Mouse</b>	<i>Peromyscus maniculatus</i>	SC	-
<b>Badger</b>	<i>Taxidea taxus</i>	SC	-
<b>Birds</b>			
<b>American Bittern</b>	<i>Botaurus lentiginosus</i>	E	-
<b>Lark Sparrow</b>	<i>Chondestes grammacus</i>	E	-
<b>Black-crowned Night-Heron</b>	<i>Nycticorax nycticorax</i>	T	-
<b>Sharp-shinned Hawk</b>	<i>Accipiter striatus</i>	SC	-
<b>Henslow's Sparrow</b>	<i>Ammodramus henslowii</i>	SC	-
<b>Grasshopper Sparrow</b>	<i>Ammodramus savannarum</i>	SC	-
<b>Common Nighthawk</b>	<i>Chordeiles minor</i>	SC	-
<b>Black-billed Cuckoo</b>	<i>Coccyzus erythrophthalmus</i>	SC	-
<b>Northern Bobwhite</b>	<i>Colinus virginianus</i>	SC	-
<b>Bobolink</b>	<i>Dolichonyx oryzivorus</i>	SC	-
<b>American Coot</b>	<i>Fulica americana</i>	SC	-
<b>Red-headed Woodpecker</b>	<i>Melanerpes erythrocephalus</i>	SC	-
<b>Vesper Sparrow</b>	<i>Pooecetes gramineus</i>	SC	-
<b>Sora Rail</b>	<i>Porzana carolina</i>	SC	-
<b>Prothonotary Warbler</b>	<i>Protonotaria citrea</i>	SC	-
<b>Virginia Rail</b>	<i>Rallus limicola</i>	SC	-
<b>Cerulean Warbler</b>	<i>Setophaga cerulea</i>	SC	-

<b>Canada Warbler</b>	<i>Cardellina canadensis</i>	SI	-
<b>Veery</b>	<i>Catharus fuscescens</i>	SI	-
<b>Hermit Thrush</b>	<i>Catharus guttatus</i>	SI	-
<b>Brown Creeper</b>	<i>Certhia americana</i>	SI	-
<b>Least Flycatcher</b>	<i>Empidonax minimus</i>	SI	-
<b>Dark-eyed Junco</b>	<i>Junco hyemalis</i>	SI	-
<b>Yellow-crowned Night-heron</b>	<i>Nyctanassa violacea</i>	SI	-
<b>Golden-crowned Kinglet</b>	<i>Regulus satrapa</i>	SI	-
<b>Magnolia Warbler</b>	<i>Setophaga magnolia</i>	SI	-
<b>Red-breasted Nuthatch</b>	<i>Sitta canadensis</i>	SI	-
<b>Insects</b>			
<b>Marsh Bluert</b>	<i>Enallagma ebrium</i>	T	-
<b>Fish</b>			
<b>Western Creek Chubsucker</b>	<i>Erimyzon claviformis</i>	SC	-
<b>Muskellunge</b>	<i>Esox masquinongy</i>	SC	-
<b>Least Darter</b>	<i>Etheostoma microperca</i>	SC	-
<b>Blue Catfish</b>	<i>Ictalurus furcatus</i>	SC	-
<b>Clams/Mollusk</b>			
<b>Snuffbox</b>	<i>Epioblasma triquetra</i>	E	E
<b>Clubshell</b>	<i>Pleurobema clava</i>	E	E
<b>Ohio Pigtoe</b>	<i>Pleurobema cordatum</i>	E	-
<b>Rabbitsfoot</b>	<i>Theliderma cylindrica</i>	E	T
<b>Rayed Bean</b>	<i>Villosa fabalis</i>	E	E
<b>Black Sandshell</b>	<i>Ligumia recta</i>	T	-
<b>Pondhorn</b>	<i>Uniomerus tetralasmus</i>	T	-
<b>Elktoe</b>	<i>Alasmidonta marginata</i>	SC	-
<b>Purple Wartyback</b>	<i>Cyclonaias tuberculata</i>	SC	-
<b>Wavy-rayed Lampmussel</b>	<i>Lampsilis fasciola</i>	SC	-
<b>Round Pigtoe</b>	<i>Pleurobema sintoxia</i>	SC	-
<b>Kidneyshell</b>	<i>Ptychobranhus fasciolaris</i>	SC	-
<b>Salamander Mussel</b>	<i>Simpsonaias ambigua</i>	SC	-
<b>Reptiles/Amphibians</b>			
<b>Eastern Cricket Frog</b>	<i>Acris crepitans</i>	SC	-
<b>Four-toed Salamander</b>	<i>Hemidactylum scutatum</i>	SC	-
<b>Queensnake</b>	<i>Regina septemvittata</i>	SI	-
<b>Flowering Plants</b>			
<b>Gattinger's-foxtglove</b>	<i>Agalinis gattingeri</i>	T	-
<b>Narrow-leaved Toothwort</b>	<i>Cardamine dissecta</i>	P	-
<b>Tufted Fescue Sedge</b>	<i>Carex brevior</i>	P	-
<b>False Hop Sedge</b>	<i>Carex lupuliformis</i>	P	-

<b>Timid Sedge</b>	<i>Carex timida</i>	T	-
<b>Spotted Coral-root</b>	<i>Corallorhiza maculata</i>	P	-
<b>Tennessee Bladder Fern</b>	<i>Cystopteris tennesseensis</i>	P	-
<b>Grove Sandwort</b>	<i>Moehringia lateriflora</i>	P	-
<b>Showy Goldenrod</b>	<i>Solidago speciosa</i>	P	-
<b>Shining Ladies' tresses</b>	<i>Spiranthes lucida</i>	P	-
<b>Arbor Vitae</b>	<i>Thuja occidentalis</i>	P	-

**Notes:** E – Endangered.; T – Threatened.; X – Extirpated.; P – Proposed Threatened.; C – Candidate Species.; SC – Species of Concern.; SI – Special Interest

**Table 2. ODNR Licking County Species List as of June 23, 2023**

Common Name	Scientific Name	State Status	Federal Status
<b>Mammals</b>			
<b>Black Bear</b>	<i>Ursus americanus</i>	E	-
<b>Northern Long-eared Bat</b>	<i>Myotis septentrionalis</i>	T	T
<b>Big Brown Bat</b>	<i>Eptesicus fuscus</i>	SC	-
<b>Red Bat</b>	<i>Lasiurus borealis</i>	SC	-
<b>Hoary Bat</b>	<i>Lasiurus cinereus</i>	SC	-
<b>Little Brown Bat</b>	<i>Myotis lucifugus</i>	SC	-
<b>Tri-colored Bat</b>	<i>Perimyotis subflavus</i>	SC	-
<b>Deer Mouse</b>	<i>Peromyscus maniculatus</i>	SC	-
<b>Badger</b>	<i>Taxidea taxus</i>	SC	-
<b>Common Gray Fox</b>	<i>Urocyon cinereoargenteus</i>	SC	-
<b>Birds</b>			
<b>Upland Sandpiper</b>	<i>Bartramia longicauda</i>	E	-
<b>Northern Harrier</b>	<i>Circus hudsonius</i>	E	-
<b>Least Bittern</b>	<i>Ixobrychus exilis</i>	T	-
<b>Barn Owl</b>	<i>Tyto alba</i>	T	-
<b>Sharp-shinned Hawk</b>	<i>Accipiter striatus</i>	SC	-
<b>Henslow's Sparrow</b>	<i>Ammodramus henslowii</i>	SC	-
<b>Grasshopper Sparrow</b>	<i>Ammodramus savannarum</i>	SC	-
<b>Great Egret</b>	<i>Ardea alba</i>	SC	-
<b>Common Nighthawk</b>	<i>Chordeiles minor</i>	SC	-
<b>Sedge Wren</b>	<i>Cistothorus platensis</i>	SC	-
<b>Black-billed Cuckoo</b>	<i>Coccyzus erythrophthalmus</i>	SC	-
<b>Northern Bobwhite</b>	<i>Colinus virginianus</i>	SC	-
<b>Bobolink</b>	<i>Dolichonyx oryzivorus</i>	SC	-
<b>Red-headed Woodpecker</b>	<i>Melanerpes erythrocephalus</i>	SC	-
<b>Vesper Sparrow</b>	<i>Pooecetes gramineus</i>	SC	-
<b>Sora Rail</b>	<i>Porzana carolina</i>	SC	-
<b>Prothonotary Warbler</b>	<i>Protonotaria citrea</i>	SC	-

<b>Cerulean Warbler</b>	<i>Setophaga cerulea</i>	SC	-
<b>Northern Saw-whet Owl</b>	<i>Aegolius acadicus</i>	SI	-
<b>Veery</b>	<i>Catharus fuscescens</i>	SI	-
<b>Brown Creeper</b>	<i>Certhia americana</i>	SI	-
<b>Magnolia Warbler</b>	<i>Setophaga magnolia</i>	SI	-
<b>Insects</b>			
<b>Green-faced Clubtail</b>	<i>Gomphus viridifrons</i>	T	-
<b>Tiger Spiketail</b>	<i>Cordulegaster erronea</i>	SC	-
<b>Fish</b>			
<b>Lake Chubsucker</b>	<i>Erimyzon sucetta</i>	T	-
<b>Muskellunge</b>	<i>Esox masquinongy</i>	SC	-
<b>Invertebrates</b>			
<b>Fawnsfoot</b>	<i>Truncilla donaciformis</i>	T	-
<b>Clams/Mollusk</b>			
<b>Longsolid</b>	<i>Fusconaia subrotunda</i>	E	-
<b>Sheepnose</b>	<i>Plethobasus cyphus</i>	E	E
<b>Pondhorn</b>	<i>Unio merus tetralasmus</i>	T	-
<b>Reptiles/Amphibians</b>			
<b>Eastern Hellbender</b>	<i>Cryptobranchus alleganiensis</i>	E	-
<b>Eastern Massasauga</b>	<i>Sistrurus catenatus</i>	E	T
<b>Spotted Turtle</b>	<i>Clemmys guttata</i>	T	-
<b>Four-toed Salamander</b>	<i>Hemidactylium scutatum</i>	SC	-
<b>Eastern Cricket Frog</b>	<i>Acris crepitans</i>	SC	-
<b>Eastern Box Turtle</b>	<i>Terrapene carolina</i>	SC	-
<b>Flowering Plants</b>			
<b>Grass-pink</b>	<i>Calopogon tuberosus</i>	P	-
<b>Howe's Sedge</b>	<i>Carex atlantica ssp. capillacea</i>	P	-
<b>Cypress-knee Sedge</b>	<i>Carex decomposita</i>	E	-
<b>Mud Sedge</b>	<i>Carex limosa</i>	T	-
<b>Lined Sedge</b>	<i>Carex striatula</i>	E	-
<b>Low Umbrella-sedge</b>	<i>Cyperus diandrus</i>	P	-
<b>Tennessee Bladder Fern</b>	<i>Cystopteris tennesseensis</i>	P	-
<b>Slender Spike-rush</b>	<i>Eleocharis tenuis</i>	T	-
<b>Tawny Cotton-grass</b>	<i>Eriophorum virginicum</i>	T	-
<b>Green Cotton-grass</b>	<i>Eriophorum viridicarinatum</i>	P	-
<b>Appalachian Club-moss</b>	<i>Huperzia appalachiana</i>	X	-
<b>Buckbean</b>	<i>Menyanthes trifoliata</i>	T	-
<b>Grove Sandwort</b>	<i>Moehringia lateriflora</i>	P	-
<b>American Water-milfoil</b>	<i>Myriophyllum sibiricum</i>	E	-
<b>Rose Pogonia</b>	<i>Pogonia ophioglossoides</i>	T	-
<b>Tall Cinquefoil</b>	<i>Potentilla arguta</i>	E	-

<b>White Beak-rush</b>	<i>Rhynchospora alba</i>	P	-
<b>Smooth Rose</b>	<i>Rosa blanda</i>	P	-
<b>Scheuchzeria</b>	<i>Scheuchzeria palustris</i>	E	-
<b>Rock Spike-moss</b>	<i>Selaginella rupestris</i>	X	-
<b>Three Birds Orchid</b>	<i>Triphora trianthophora</i>	P	-
<b>Lesser Bladderwort</b>	<i>Utricularia minor</i>	T	-

**Notes:** E – Endangered.; T – Threatened.; X – Extirpated.; P – Proposed Threatened.; C – Candidate Species.; SC – Species of Concern.; SI – Special Interest

**Table 3. ODNR Franklin County Species List as of June 23, 2023**

Common Name	Scientific Name	State Status	Federal Status
<b>Mammals</b>			
<b>Indiana Myotis</b>	<i>Myotis sodalis</i>	E	E
<b>Black Bear</b>	<i>Ursus americanus</i>	E	-
<b>Northern Long-eared Bat</b>	<i>Myotis septentrionalis</i>	T	T
<b>Star-nosed Mole</b>	<i>Condylura cristata</i>	SC	-
<b>Big Brown Bat</b>	<i>Eptesicus fuscus</i>	SC	-
<b>Red Bat</b>	<i>Lasiurus borealis</i>	SC	-
<b>Hoary Bat</b>	<i>Lasiurus cinereus</i>	SC	-
<b>Snowshoe Hare</b>	<i>Lepus americanus</i>	SC	-
<b>Woodland Vole</b>	<i>Microtus pinetorum</i>	SC	-
<b>Ermine</b>	<i>Mustela erminea</i>	SC	-
<b>Little Brown Bat</b>	<i>Myotis lucifugus</i>	SC	-
<b>Tri-colored Bat</b>	<i>Perimyotis subflavus</i>	SC	-
<b>Deer Mouse</b>	<i>Peromyscus maniculatus</i>	SC	-
<b>Smoky Shrew</b>	<i>Sorex fumeus</i>	SC	-
<b>Southern Bog Lemming</b>	<i>Synaptomys cooperi</i>	SC	-
<b>Badger</b>	<i>Taxidea taxus</i>	SC	-
<b>Common Gray Fox</b>	<i>Urocyon cinereoargenteus</i>	SC	-
<b>Evening Bat</b>	<i>Nycticeius humeralis</i>	SI	-
<b>American Bison</b>	<i>Bison</i>	X	-
<b>Birds</b>			
<b>Upland Sandpiper</b>	<i>Bartramia longicauda</i>	E	-
<b>American Bittern</b>	<i>Botaurus lentiginosus</i>	E	-
<b>Cattle Egret</b>	<i>Bubulcus ibis</i>	E	-
<b>Lark Sparrow</b>	<i>Chondestes grammacus</i>	E	-
<b>Northern Harrier</b>	<i>Circus hudsonius</i>	E	-
<b>Sandhill Crane</b>	<i>Grus canadensis</i>	T	-
<b>Least Bittern</b>	<i>Ixobrychus exilis</i>	T	-
<b>Black-crowned Night-Heron</b>	<i>Nycticorax nycticorax</i>	T	-
<b>Barn Owl</b>	<i>Tyto alba</i>	T	-

<b>Sharp-sinned Hawk</b>	<i>Accipiter striatus</i>	SC	-
<b>Henslow's Sparrow</b>	<i>Ammodramus henslowii</i>	SC	-
<b>Grasshopper Sparrow</b>	<i>Ammodramus savannarum</i>	SC	-
<b>Great Egret</b>	<i>Ardea alba</i>	SC	-
<b>Common Nighthawk</b>	<i>Chordeiles minor</i>	SC	-
<b>Sedge Wren</b>	<i>Cistothorus platensis</i>	SC	-
<b>Black-billed Cuckoo</b>	<i>Coccyzus erythrophthalmus</i>	SC	-
<b>Northern Bobwhite</b>	<i>Colinus virginianus</i>	SC	-
<b>Bobolink</b>	<i>Dolichonyx oryzivorus</i>	SC	-
<b>American Coot</b>	<i>Fulica americana</i>	SC	-
<b>Common Gallinule</b>	<i>Gallinula galeata</i>	SC	-
<b>Red-headed Woodpecker</b>	<i>Melanerpes erythrocephalus</i>	SC	-
<b>Vesper Sparrow</b>	<i>Pooecetes gramineus</i>	SC	-
<b>Sora Rail</b>	<i>Porzana carolina</i>	SC	-
<b>Prothonotary Warbler</b>	<i>Protonotaria citrea</i>	SC	-
<b>Virginia Rail</b>	<i>Rallus limicola</i>	SC	-
<b>Cerulean Warbler</b>	<i>Setophaga cerulea</i>	SC	-
<b>Northern Shoveler</b>	<i>Anas clypeata</i>	SI	-
<b>Green-Winged Teal</b>	<i>Anas crecca</i>	SI	-
<b>American Black Duck</b>	<i>Anas rubripes</i>	SI	-
<b>Veery</b>	<i>Catharus fuscescens</i>	SI	-
<b>Hermit Thrush</b>	<i>Catharus guttatus</i>	SI	-
<b>Brown Creeper</b>	<i>Certhia americana</i>	SI	-
<b>Least Flycatcher</b>	<i>Empidonax minimus</i>	SI	-
<b>Wilson's Snipe</b>	<i>Gallinago delicata</i>	SI	-
<b>Dark-eyed Junco</b>	<i>Junco hyemalis</i>	SI	-
<b>Yellow-crowned Night-Heron</b>	<i>Nyctanassa violacea</i>	SI	-
<b>Nashville Warbler</b>	<i>Oreothlypis ruficapilla</i>	SI	-
<b>Northern Waterthrush</b>	<i>Parkesia noveboracensis</i>	SI	-
<b>Golden-crowned Kinglet</b>	<i>Regulus satrapa</i>	SI	-
<b>Blackburnian Warbler</b>	<i>Setophaga fusca</i>	SI	-
<b>Magnolia Warbler</b>	<i>Setophaga magnolia</i>	SI	-
<b>Red-breasted Nuthatch</b>	<i>Sitta canadensis</i>	SI	-
<b>Yellow-bellied Sapsucker</b>	<i>Sphyrapicus varius</i>	SI	-
<b>Winter Wren</b>	<i>Troglodytes hiemalis</i>	SI	-
<b>Golden-winged Warbler</b>	<i>Vermivora chrysoptera</i>	SI	-
<b>Bell's Vireo</b>	<i>Vireo bellii</i>	SI	-
<b>Insects</b>			
-	<i>Chimarra socia</i>	E	-
<b>Two-spotted Skipper</b>	<i>Euphyes bimacula</i>	SC	-

-	<i>Agroperina lutosa</i>	SC	-
<b>Precious Underwing</b>	<i>Catocala pretiosa</i>	SC	-
<b>Slender Clearwing</b>	<i>Hemaris gracilis</i>	SI	-
<b>Fish</b>			
<b>Iowa Darter</b>	<i>Etheostoma exile</i>	E	-
<b>Spotted Darter</b>	<i>Etheostoma maculatum</i>	E	-
<b>Tonguetied Minnow</b>	<i>Exoglossum laurae</i>	E	-
<b>Goldeye</b>	<i>Hiodon alosoides</i>	E	-
<b>Northern Brook Lamprey</b>	<i>Ichthyomyzon fossor</i>	E	-
<b>Shortnose Gar</b>	<i>Lepisosteus platostomus</i>	E	-
<b>Popeye Shiner</b>	<i>Notropis ariommus</i>	E	-
<b>Lake Chubsucker</b>	<i>Erimyzon sucetta</i>	T	-
<b>Tippecanoe Darter</b>	<i>Etheostoma tippecanoe</i>	T	-
<b>Paddlefish</b>	<i>Polyodon spathula</i>	T	-
<b>Muskellunge</b>	<i>Esox masquinongy</i>	SC	-
<b>Blue catfish</b>	<i>Ictalurus furcatus</i>	SC	-
<b>Blacknose Shiner</b>	<i>Notropis heterolepis</i>	X	-
<b>Longhead Darter</b>	<i>Percina macrocephala</i>	X	-
<b>Clams/Mollusk</b>			
<b>Butterfly</b>	<i>Ellipsaria lineolata</i>	E	-
<b>Elephant-ear</b>	<i>Elliptio crassidens</i>	E	-
<b>Purple Cat's paw</b>	<i>Epioblasma obliquata</i>	E	E
<b>Snuffbox</b>	<i>Epioblasma triquetra</i>	E	E
<b>Longsolid</b>	<i>Fusconaia subrotunda</i>	E	-
<b>Pink Mucket</b>	<i>Lampsilis abrupta</i>	E	E
<b>Pocketbook</b>	<i>Lampsilis ovata</i>	E	-
<b>Washboard</b>	<i>Megaloniais nervosa</i>	E	-
<b>Clubshell</b>	<i>Pleurobema clava</i>	E	E
<b>Ohio Pigtoe</b>	<i>Pleurobema cordatum</i>	E	-
<b>Rabbitsfoot</b>	<i>Theliderma cylindrica</i>	E	T
<b>Rayed Bean</b>	<i>Villosa fabalis</i>	E	E
<b>Black Sandshell</b>	<i>Ligumia recta</i>	T	-
<b>Threehorn Wartyback</b>	<i>Obliquaria reflexa</i>	T	-
<b>Fawnsfoot</b>	<i>Truncilla donaciformis</i>	T	-
<b>Pondhorn</b>	<i>Unio merus tetralasmus</i>	T	-
<b>Elktoe</b>	<i>Alasmidonta marginata</i>	SC	-
<b>Purple Wartyback</b>	<i>Cyclonaias tuberculata</i>	SC	-
<b>Wavy-rayed Lampmussel</b>	<i>Lampsilis fasciola</i>	SC	-
<b>Creek Heelsplitter</b>	<i>Lasmigona compressa</i>	SC	-
<b>Round Pigtoe</b>	<i>Pleurobema sintoxia</i>	SC	-
<b>Kidneyshell</b>	<i>Ptychobranhus fasciolaris</i>	SC	-



<b>Deertoe</b>	<i>Truncilla truncata</i>	SC	-
<b>Mucket</b>	<i>Actinonaias ligamentina ligamentina</i>	X	-
<b>Rough Pigtoe</b>	<i>Pleurobema plenum</i>	X	-
<b>Reptiles/Amphibians</b>			
<b>Smooth Greensnake</b>	<i>Opheodrys vernalis</i>	E	-
<b>Eastern Cricket Frog</b>	<i>Acris crepitans crepitans</i>	SC	-
<b>Four-toed Salamander</b>	<i>Hemidactylum scutatum</i>	SC	-
<b>Flowering Plants</b>			
<b>American Sweet-flag</b>	<i>Acorus americanus</i>	P	-
<b>Gattinger's-foxglove</b>	<i>Agalinis gattingeri</i>	T	-
<b>Spreading Rock Cress</b>	<i>Arabis patens</i>	E	-
<b>Prairie False Indigo</b>	<i>Baptisia lacteal</i>	P	-
<b>Prairie Brome</b>	<i>Bromus kalmii</i>	P	-
<b>Pale Umbrella-sedge</b>	<i>Carex acuminatus</i>	E	-
<b>Cypress-knee Sedge</b>	<i>Carex decomposita</i>	P	-
<b>Tall Larkspur</b>	<i>Delphinium exaltatum</i>	P	-
<b>One-sided Rush</b>	<i>Juncus secundus</i>	P	-
<b>Scaly Blazing-star</b>	<i>Liatris squarrosa</i>	P	-
<b>Weak Spear Grass</b>	<i>Poa saltuensis ssp. languida</i>	P	-
<b>Abor Vitae</b>	<i>Thuja occidentalis</i>	P	-
<b>Three Birds Orchid</b>	<i>Triphora trianthophora</i>	P	-
<b>Rock Elm</b>	<i>Ulmus thomasii</i>	P	-

**Notes:** E – Endangered.; T – Threatened.; X – Extirpated.; P – Proposed Threatened.; C – Candidate Species.; SC – Species of Concern.; SI – Special Interest

**Table 4. USFWS IPaC Species List for Project Study Area**

Common Name	Scientific Name	Status
<b>Insects</b>		
<b>Monarch Butterfly</b>	<i>Danaus plexippus</i>	C
<b>Mammals</b>		
<b>Indiana Bat</b>	<i>Myotis sodalis</i>	E
<b>Northern Long-eared Bat</b>	<i>Myotis septentrionalis</i>	E
<b>Tricolored Bat</b>	<i>Perimyotis subflavus</i>	PE
<b>Clams</b>		
<b>Round Hickorynut</b>	<i>Obovaria subrotunda</i>	T

**Notes:** E – Federally Endangered.; T – Federally Threatened.; PE – Proposed Endangered.; PT – Proposed Threatened.; C – Candidate Species.

A Threatened and Endangered Species Desktop Review was conducted for the Intel Project Slice. The Project Study Area is generally within agricultural and residential developed land uses. All

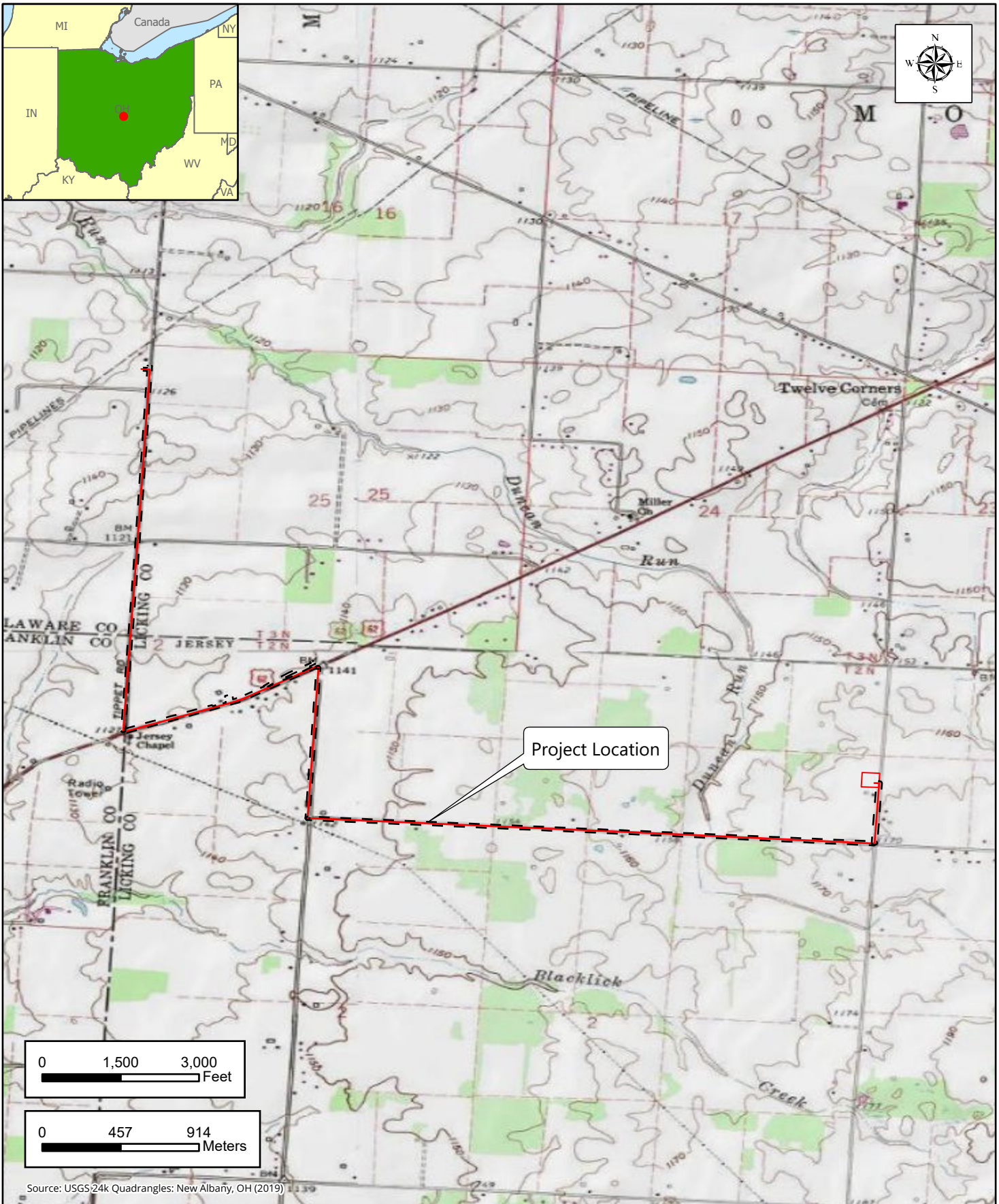
construction activities, with the exception of the new customer regulator/meter station (GMB) at the Intel (customer) plant, will be located in the existing roadway. The GMB location is under agricultural use.

In summary, the comprehensive database search determined that the State has not identified any State or Federally listed species within the project limits. The USFWS identified the potential for three (3) species with current federal protection to occur within the Project Study Area (Northern long-eared bat, Indiana bat, and round hickorynut). CED assumes the ODNR will also acknowledge that the project site is within the range of the Federally listed Northern long-eared bat, and Indiana bat, as well as multiple State-listed bats, including the Tricolored bat. As such, in coordination with the ODNR, the State Division of Wildlife (DOW) recommends tree cutting only occur from October 1 through March 31. No trees are proposed to be removed as part of the proposed construction, due to its location within roadway rights-of-way and on active agricultural land. Additional suggestions from the ODNR include avoidance of in-water work in perennial streams; no work is proposed within the banks of perennial streams.

Project No. 22011510A  
July 7, 2023



## APPENDIX A



Source: USGS 24k Quadrangles: New Albany, OH (2019)

Prepared For:  
 NiSource Inc.  
 801 E. 86th Avenue  
 Merrillville, IN 46410

Prepared By:  
 Pittsburgh Office  
 1501 Reedsdale St Ste 302  
 Pittsburgh, PA, 15233  
 T: 412 618 5390  
 www.colliersengineering.com



Engineering & Design

## Project Location Map

*NiSource Intel Project*

Franklin, Delaware & Licking County, Ohio

Date:

7/7/2023

Project #:

22011510A

Drawn By:

AW

Figure 1

[ - - ] Project Area

— Project Location

Project No. 22011510A  
January 9, 2023



## APPENDIX B

Project No. 22011510A  
January 9, 2023



## APPENDIX C



## United States Department of the Interior



FISH AND WILDLIFE SERVICE  
Ohio Ecological Services Field Office  
4625 Morse Road, Suite 104  
Columbus, OH 43230-8355  
Phone: (614) 416-8993 Fax: (614) 416-8994

In Reply Refer To:  
Project Code: 2023-0101849  
Project Name: 22011510A- NiSource Intel Project

July 07, 2023

Subject: List of threatened and endangered species that may occur in your proposed project location or may be affected by your proposed project

### To Whom It May Concern:

The enclosed species list identifies threatened, endangered, proposed and candidate species, as well as proposed and final designated critical habitat, that may occur within the boundary of your proposed project and/or may be affected by your proposed project. The species list fulfills the requirements of the U.S. Fish and Wildlife Service (Service) under section 7(c) of the Endangered Species Act (Act) of 1973, as amended (16 U.S.C. 1531 *et seq.*).

New information based on updated surveys, changes in the abundance and distribution of species, changed habitat conditions, or other factors could change this list. Please feel free to contact us if you need more current information or assistance regarding the potential impacts to federally proposed, listed, and candidate species and federally designated and proposed critical habitat. Please note that under 50 CFR 402.12(e) of the regulations implementing section 7 of the Act, the accuracy of this species list should be verified after 90 days. This verification can be completed formally or informally as desired. The Service recommends that verification be completed by visiting the ECOS-IPaC website at regular intervals during project planning and implementation for updates to species lists and information. An updated list may be requested through the ECOS-IPaC system by completing the same process used to receive the enclosed list.

The purpose of the Act is to provide a means whereby threatened and endangered species and the ecosystems upon which they depend may be conserved. Under sections 7(a)(1) and 7(a)(2) of the Act and its implementing regulations (50 CFR 402 *et seq.*), Federal agencies are required to utilize their authorities to carry out programs for the conservation of threatened and endangered species and to determine whether projects may affect threatened and endangered species and/or designated critical habitat.

A Biological Assessment is required for construction projects (or other undertakings having similar physical impacts) that are major Federal actions significantly affecting the quality of the human environment as defined in the National Environmental Policy Act (42 U.S.C. 4332(2) (c)). For projects other than major construction activities, the Service suggests that a biological



evaluation similar to a Biological Assessment be prepared to determine whether the project may affect listed or proposed species and/or designated or proposed critical habitat. Recommended contents of a Biological Assessment are described at 50 CFR 402.12.

If a Federal agency determines, based on the Biological Assessment or biological evaluation, that listed species and/or designated critical habitat may be affected by the proposed project, the agency is required to consult with the Service pursuant to 50 CFR 402. In addition, the Service recommends that candidate species, proposed species and proposed critical habitat be addressed within the consultation. More information on the regulations and procedures for section 7 consultation, including the role of permit or license applicants, can be found in the "Endangered Species Consultation Handbook" at:

<http://www.fws.gov/endangered/esa-library/pdf/TOC-GLOS.PDF>

**Migratory Birds:** In addition to responsibilities to protect threatened and endangered species under the Endangered Species Act (ESA), there are additional responsibilities under the Migratory Bird Treaty Act (MBTA) and the Bald and Golden Eagle Protection Act (BGEPA) to protect native birds from project-related impacts. Any activity, intentional or unintentional, resulting in take of migratory birds, including eagles, is prohibited unless otherwise permitted by the U.S. Fish and Wildlife Service (50 C.F.R. Sec. 10.12 and 16 U.S.C. Sec. 668(a)). For more information regarding these Acts see <https://www.fws.gov/birds/policies-and-regulations.php>.

The MBTA has no provision for allowing take of migratory birds that may be unintentionally killed or injured by otherwise lawful activities. It is the responsibility of the project proponent to comply with these Acts by identifying potential impacts to migratory birds and eagles within applicable NEPA documents (when there is a federal nexus) or a Bird/Eagle Conservation Plan (when there is no federal nexus). Proponents should implement conservation measures to avoid or minimize the production of project-related stressors or minimize the exposure of birds and their resources to the project-related stressors. For more information on avian stressors and recommended conservation measures see <https://www.fws.gov/birds/bird-enthusiasts/threats-to-birds.php>.

In addition to MBTA and BGEPA, Executive Order 13186: *Responsibilities of Federal Agencies to Protect Migratory Birds*, obligates all Federal agencies that engage in or authorize activities that might affect migratory birds, to minimize those effects and encourage conservation measures that will improve bird populations. Executive Order 13186 provides for the protection of both migratory birds and migratory bird habitat. For information regarding the implementation of Executive Order 13186, please visit <https://www.fws.gov/birds/policies-and-regulations/executive-orders/e0-13186.php>.

We appreciate your concern for threatened and endangered species. The Service encourages Federal agencies to include conservation of threatened and endangered species into their project planning to further the purposes of the Act. Please include the Consultation Code in the header of this letter with any request for consultation or correspondence about your project that you submit to our office.

---



Attachment(s):

- Official Species List

## **OFFICIAL SPECIES LIST**

This list is provided pursuant to Section 7 of the Endangered Species Act, and fulfills the requirement for Federal agencies to "request of the Secretary of the Interior information whether any species which is listed or proposed to be listed may be present in the area of a proposed action".

This species list is provided by:

**Ohio Ecological Services Field Office**

4625 Morse Road, Suite 104

Columbus, OH 43230-8355

(614) 416-8993

---

## PROJECT SUMMARY

**Project Code:** 2023-0101849  
**Project Name:** 22011510A- NiSource Intel Project  
**Project Type:** Maintenance/Modification - Below Ground Communications Lines  
**Project Description:** Colliers Engineering & Design, Inc. (DBA Maser Consulting) is submitting this letter for Environmental Review of the NiSource Intel Project located northeast of New Albany within Franklin, Delaware, and Licking Counties, Ohio. The NiSource Intel Project includes the installation of a Point-of-Delivery facility (POD) and 4-miles of pipeline with alternate routes. The Project Study Area is within the existing DOT right-of-way along Tippet Road, Johnstown Utica Road, Beech Road NW, and Miller Road NW. The Project Study Area or “Survey Corridor” begins at latitudinal coordinates 40.139857 N and longitudinal coordinates -82.761203 W and ends at coordinates 40.118148 N and longitudinal coordinates -82.722787 W. The Project Study Area or “Survey Corridor” is situated within an area characterized by mainly residential properties, agricultural land, and small forested areas. The Project Study Area is located in the Eastern Corn Belt Plains ecoregion.

### Project Location:

The approximate location of the project can be viewed in Google Maps: <https://www.google.com/maps/@40.127399749999995,-82.76166475696941,14z>



Counties: Delaware , Franklin , and Licking counties, Ohio

## ENDANGERED SPECIES ACT SPECIES

There is a total of 5 threatened, endangered, or candidate species on this species list.

Species on this list should be considered in an effects analysis for your project and could include species that exist in another geographic area. For example, certain fish may appear on the species list because a project could affect downstream species.

IPaC does not display listed species or critical habitats under the sole jurisdiction of NOAA Fisheries<sup>1</sup>, as USFWS does not have the authority to speak on behalf of NOAA and the Department of Commerce.

See the "Critical habitats" section below for those critical habitats that lie wholly or partially within your project area under this office's jurisdiction. Please contact the designated FWS office if you have questions.

- 
1. [NOAA Fisheries](#), also known as the National Marine Fisheries Service (NMFS), is an office of the National Oceanic and Atmospheric Administration within the Department of Commerce.

## MAMMALS

NAME	STATUS
Indiana Bat <i>Myotis sodalis</i> There is <b>final</b> critical habitat for this species. Your location does not overlap the critical habitat. Species profile: <a href="https://ecos.fws.gov/ecp/species/5949">https://ecos.fws.gov/ecp/species/5949</a>	Endangered
Northern Long-eared Bat <i>Myotis septentrionalis</i> No critical habitat has been designated for this species. Species profile: <a href="https://ecos.fws.gov/ecp/species/9045">https://ecos.fws.gov/ecp/species/9045</a>	Endangered
Tricolored Bat <i>Perimyotis subflavus</i> No critical habitat has been designated for this species. Species profile: <a href="https://ecos.fws.gov/ecp/species/10515">https://ecos.fws.gov/ecp/species/10515</a>	Proposed Endangered

## CLAMS

NAME	STATUS
Round Hickorynut <i>Obovaria subrotunda</i> There is <b>final</b> critical habitat for this species. Species profile: <a href="https://ecos.fws.gov/ecp/species/9879">https://ecos.fws.gov/ecp/species/9879</a>	Threatened

## INSECTS

NAME	STATUS
Monarch Butterfly <i>Danaus plexippus</i> No critical habitat has been designated for this species. Species profile: <a href="https://ecos.fws.gov/ecp/species/9743">https://ecos.fws.gov/ecp/species/9743</a>	Candidate

---

## **CRITICAL HABITATS**

THERE ARE NO CRITICAL HABITATS WITHIN YOUR PROJECT AREA UNDER THIS OFFICE'S JURISDICTION.

YOU ARE STILL REQUIRED TO DETERMINE IF YOUR PROJECT(S) MAY HAVE EFFECTS ON ALL ABOVE LISTED SPECIES.

---

## **IPAC USER CONTACT INFORMATION**

Agency: Colliers Engineering and Design  
Name: Sean Stanton  
Address: 2000 Regency Parkway  
Address Line 2: Suite 295  
City: Cary  
State: NC  
Zip: 27518  
Email: sean.stanton@collierseng.com  
Phone: 9843125647

---