



Engineering
& Design

Wetland Delineation Report

University Project

Colliers Engineering & Design Project Number: 21004202A

May 22, 2023

Prepared for:

NISource Inc.
801 E. 86th Avenue
Merrillville, IN 46410

Prepared by:

Colliers Engineering & Design, Inc.
1501 Reedsdale Street,
Suite 302
Pittsburgh, PA 15233
Main: 412-618-5390
Colliersengineering.com



Table of Contents

EXECUTIVE SUMMARY 1

1.0 PROJECT INFORMATION 2

2.0 INTRODUCTION 3

3.0 PROPERTY DESCRIPTION 4

4.0 BACKGROUND INFORMATION 5

4.1 U.S. Geological Survey Map 5

4.2 Soil Survey 5

5.0 WETLAND & SURFACE WATER DELINEATION METHODOLOGY 7

6.0 WETLAND AND SURFACE WATER DELINEATION RESULTS 8

6.1 Wetland and Surface Water Summary 8

6.2 Vegetation 8

6.3 Soils 8

6.4 Hydrology 9

7.0 WETLAND DELINEATION CONCLUSION 10

8.0 REFERENCES 11

APPENDICES

- APPENDIX A – FIGURES
- APPENDIX B – DATA FORMS
- APPENDIX C – USACE ANTECEDENT PRECIPITATION TOOL

EXECUTIVE SUMMARY

On behalf of NiSource Inc., Colliers Engineering & Design (CED) conducted field delineations for the University Project within Franklin County, Ohio (hereinafter described as "Survey Corridor"). The Survey Corridor is located at latitudinal coordinates 40.010495 N and longitudinal coordinates -83.014039 W. The Survey Corridor is located approximately 5 miles north of Columbus, Ohio. Access to the Survey Corridor can be achieved from Ackerman Road, Stanhope Road, N Star Road, Kenny Road, Ridgeview Road, Brandon Road, Northwest Boulevard, and West Lane Avenue.

The Project Study Area is comprised of a 100-foot wide survey corridor centered on the proposed pipeline alignment for 3.7 miles. The Project Study Area or "Survey Corridor" includes the proposed installation of 3.7 miles of 20-inch pipeline. The Survey Corridor was investigated to identify potential jurisdictional Waters of the U.S. (WOTUS) and wetlands subject to Federal or State regulatory jurisdiction. The delineation methodologies developed by the USACE and the USEPA, as described in the *1987 Corps of Engineers Wetlands Delineation Manual, Technical Report Y-87-1* and the *Regional Supplement to the Corps of Engineers Wetland Delineation Manual: Midwest Region (Version 2.0)* and the subsequently issued USACE regulatory guidance regarding the identification of jurisdictional stream channels through the recognition of field indicators of an ordinary high-water mark within drainage features (Environmental Laboratory, 1987; USACE 2012; USACE 2005) were utilized during our investigation. The location and size of jurisdictional areas delineated are shown on the attached Figure 5. Delineation Results (**Appendix A**).

Based on the field investigations, two (2) stream features and one (1) wetland feature were delineated within the Survey Corridor by CED on March 2nd & 3rd, 2022 and May 19th, 2023. A total of 2,552 linear feet of perennial (R3) stream, 562 linear feet of intermittent (R4), and 0.23 acres of palustrine emergent (PEM) wetland were delineated. It is CED's professional opinion that Stream Features "1" and "2", and the proximal wetland, are considered jurisdictional WOTUS since they drain into Olentangy River and Scioto River. These stream features can be considered jurisdictional WOTUS since they connect and/or are directly connected to Olentangy River and Scioto River. The location and size of jurisdictional areas delineated are shown on Figure 5. Delineation Results (**Appendix A**).

1.0 PROJECT INFORMATION

Project Name	University Project
Project Location	Ackerman Road, Stanhope Road, N Star Road, Kenny Road, Ridgeview Road, Brandon Road, Northwest Boulevard, and West Lane Avenue
Municipality	Columbus
County	Franklin
State	Ohio
Latitude/Longitude	40.010495 N / -83.014039 W
Subject Property Size	+/- 3.7 mi/LF 100 feet wide survey corridor
U.S.G.S. Quadrangle	Northwest Columbus OH
Potential Jurisdictional Waters of the U.S. (WOTUS) and wetlands	See Aquatic Resource Area Summary Table on Page 8
River Basin (HUC) & sub-watershed	Upper Scioto Basin: 8 Digit HUC Code 05060001
Nearest Stream	Olentangy River and Scioto River
Navigable Water Nexus	Stream features delineated on the Survey Corridor would be considered jurisdictional WOTUS and wetlands since these features drain towards Olentangy River and Scioto River.
Isolated Wetlands/Waters Present (Yes/No)	No

2.0 INTRODUCTION

On behalf of NiSource Inc., Colliers Engineering & Design (CED) conducted field delineations for the University Project located in the greater North Columbus area within Franklin County, Ohio (hereinafter described as "Survey Corridor"). The Survey Corridor is located at latitudinal coordinates 40.010495 N and longitudinal coordinates - 83.014039 W. The Survey Corridor is located approximately 5 miles north of Columbus, Ohio. Access to the Survey Corridor can be achieved from Ackerman Road, Stanhope Road, N Star Road, Kenny Road, Ridgeview Road, Brandon Road, Northwest Boulevard, and West Lane Avenue. The Survey Corridor is bordered by residential homes, commercial properties, agricultural land, and forested areas. There are unnamed tributaries located within the Survey Corridor that eventually drain to Olentangy River and Scioto River.

The Survey Corridor was investigated to identify potential jurisdictional Waters of the U.S. (WOTUS) and wetlands subject to Federal or State regulatory jurisdiction. According to the U.S. Army Corps of Engineers (USACE) and U.S. Environmental Protection Agency (USEPA) regulations described in Section 404 of the Clean Water Act (33 CFR Section 328.3 and 40 CFR Section 230.3) respectively, wetlands are "...areas that are inundated or saturated with surface or ground water at a frequency and duration sufficient to support, and that under normal circumstances do support, a prevalence of vegetation typically adapted for life in saturated soil conditions."

3.0 PROPERTY DESCRIPTION

The Survey Corridor is located within the Upper Scioto River Basin (8 Digit HUC Code 05060001). Access to the Survey Corridor can be achieved from Ackerman Road, Stanhope Road, N Star Road, Kenny Road, Ridgeview Road, Brandon Road, Northwest Boulevard, and West Lane Avenue. The western section of the Survey Corridor drains south towards Scioto River, and the eastern section of the Survey Corridor drains east towards the Olentangy River. The Survey Corridor does not contain floodways or floodplains according to FEMA Floodplain Panel Maps 39049C0164K, 39049C0168K, and 39049C0169K (eff. 6/17/2008). The Survey Corridor contains approximately 30% forested communities and 70% residential properties and commercial properties. The forested areas are comprised of a mixture of oak, tulip poplar, red maple, pine, and sweetgum species that dominate the canopy layer. Olentangy River is located east of the Survey Corridor and Scioto River is located west of the Survey Corridor and drain north to south. Unnamed tributaries can be found in the western and eastern sections of the Survey Corridor eventually discharging into Olentangy River and Scioto River.

4.0 BACKGROUND INFORMATION

Prior to on-site field investigations, several publicly available sources of information were reviewed to determine the likelihood of wetlands and surface waters occurring within Survey Corridor. These mapping resources generally include, but are not limited to, the United States Geological Survey (USGS) maps (Figure 1. Project Location Map, **Appendix A**), the U.S. Department of Agriculture - Natural Resource Conservation Service (NRCS) soils database (Figure 2. Soil Series Map, **Appendix A**), National Hydrography Dataset (NHD), and the U.S. Fish & Wildlife Service National Wetlands Inventory (NWI) database (Figure 3. National Wetlands Inventory Map, **Appendix A**).

4.1 U.S. GEOLOGICAL SURVEY MAP

The Survey Corridor appears on the *Northwest Columbus OH* Quadrangle USGS Maps (Figure 1. Project Location Map, **Appendix A**) and is depicted as developed properties which contains approximately 30% forested areas and 70% residential and commercial properties. The USGS also depicts unnamed tributaries located within western and eastern sections. Residential and forested areas are located within the vicinity of the Survey Corridor to the north, south, east, and west. Elevations at the Survey Corridor range from 750 to 950 feet above mean sea level (MSL) based on the USGS map.

4.2 SOIL SURVEY

The NRCS Web Soil Survey depicts the following Table Soil Series map units within the Survey Corridor and provides a description of the properties and qualities of each soil:

Table 1. Soils Section for University Project

Map Unit Symbol	Map Unit Name	Drainage Class	Runoff Class	Depth to Water Table
CfB	Celina-Urban land complex, 2 to 6 percent slopes	Moderately Well Drained	Medium	About 18 to 36 inches
CrB	Crosby silt loam, Southern Ohio Till Plain, 2 to 6 percent slopes	Somewhat Poorly Drained	Medium	About 6 to 24 inches
CsA	Crosby-Urban land complex, 0 to 2 percent slopes	Somewhat Poorly Drained	Medium	About 6 to 24 inches
CsB	Crosby-Urban land complex, 2 to 6 percent slopes	Somewhat Poorly Drained	High	About 12 to 36 inches
Ko	Kokomo silty clay loam, 0 to 2 percent slopes	Very Poorly Drained	Negligible	About 0 to 6 inches

Map Unit Symbol	Map Unit Name	Drainage Class	Runoff Class	Depth to Water Table
Ut	Udorthents-Urban land complex, gently rolling	-	-	More than 80 inches

Of the six (6) mapped soil units in the Survey Corridor, one (1) soil unit (Kokomo silty clay loam) is listed as being hydric.

5.0 WETLAND & SURFACE WATER DELINEATION METHODOLOGY

The wetland delineation methodologies developed by the USACE and the USEPA, as described in the 1987 Corps of Engineers Wetlands Delineation Manual, Technical Report Y-87-1 and the Regional Supplement to the Corps of Engineers Wetland Delineation Manual: *Midwest Region* (Version 2.0) and subsequently issued USACE regulatory guidance regarding the identification of jurisdictional stream channels through the recognition of field indicators of an ordinary high-water mark within drainage features (Environmental Laboratory, 1987; USACE 2012; USACE 2005), were utilized during our investigation. These methodologies generally involve the review of three parameters (vegetation, soils, hydrology) when making a wetland or non-wetland determination.

The Survey Corridor was walked, community types were characterized, and wetland and surface water boundaries were flagged. Sample stations were established along the boundaries to examine vegetation, soils, and hydrology. Using this data, boundaries were established based on changes in vegetation, soils, hydrology, and surface water characteristics.

6.0 WETLAND AND SURFACE WATER DELINEATION RESULTS

6.1 WETLAND AND SURFACE WATER SUMMARY

On-site field investigations of the Survey Corridor were conducted by CED on March 2nd & 3rd, 2022 and May 19, 2023. The on-site delineation did verify the presence of surface waters within Survey Corridor. A summary of the aquatic resources identified within the Survey Corridor is provided below in Table 2: Aquatic Resource Summary. The location and size of the aquatic resources delineated are shown on Figure 5. Delineation Results (Appendix A).

Table 2: Aquatic Resource Area Summary Table

Aquatic Resource	PFO Area (AC)	PEM Area (AC)	Aquatic Resource	PUB Area (AC)	Aquatic Resource	R3 Length (LF)	R4 Length (LF)
W-1	-	0.23	-	-	S-1	254	-
-	-	-	-	-	S-2	2298	562
Total Wetlands by Class (AC)	-	0.23	Total Pond (AC)	-	Total Stream by Class (LF)	2,552	562
Total Wetlands (AC)	0.23				Total Stream (LF)	3,114	

Note 1: Cowardin Class PEM = palustrine emergent wetland, R3 = perennial stream, R4 = intermittent stream

6.2 VEGETATION

One (1) wetland was observed within the project boundaries. Representative plant species within the wetland areas include the following: red maple (*Acer rubrum*), American elm (*Ulmus americana*), green ash (*Fraxinus pennsylvanica*), sugar maple (*Acer saccharum*), eastern cottonwood (*Populus deltoides*), amur honeysuckle (*Lonicera mackaii*), spotted touch-me-not (*Impatiens capensis*), Canadian clearweed (*Pilea pumila*), common blue violet (*Viola papilionacea*), jumpseed (*Persicaria virginiana*), yellow iris (*Iris psuedacorus*), poison ivy (*Toxicodendron radicans*), and rice cutgrass (*Leersia oryzoides*).

Representative plant species within the upland areas include the following: northern red oak (*Quercus rubra*), sugar maple, American beech (*Fagus grandifolia*), amur honeysuckle, eastern hemlock (*Tsuga canadensis*), and poison ivy.

6.3 SOILS

Hydric soils are defined as soils that formed under conditions of saturation, flooding, or ponding long enough during the growing season to develop anaerobic conditions in the upper part of the soil (USDA 2003). The soils in the wetland areas were variable, but for the most part, exhibited low chroma matrices with redoximorphic features. Soils within the wetland areas on-site exhibit low chroma matrix colors and concentrations that are characteristic of reducing anaerobic conditions associated within the formation of hydric soils. Wetland soils were typically black (10YR 2/1), dark yellowish brown (10YR 4/6), and brown (10YR 5/2) within the upper 16 inches. Jurisdictional soils were generally underlain dark yellowish brown (10YR 4/6), and brown (10YR 5/2) down to 16 inches. Redox concentrations greater than 3% were observed between 0 and 16 inches below soil surface and are typically dark yellowish brown (10YR 4/6). Soils within jurisdictional areas meet the F3 Depleted Matrix hydric

soil indicator. Textures within the jurisdictional areas included loam. The upland soils were dark brown (10YR 3/3) within the upper 16 inches. Soil textures included loam.

6.4 HYDROLOGY

On-site field investigations of the Survey Corridor were conducted by CED on March 2nd & 3rd, 2022 and May 19, 2023. The USACE Antecedent Precipitation Tool (APT) was utilized for the Survey Corridor and is provided in **Appendix C**. Based the USACE APT tool, the on-site field investigations were conducted in "Wetter than Normal" precipitation conditions with a 30-day rolling total during the March 2nd & 3rd, 2022 investigations. The on-site field investigations were conducted in "Drier than Normal" precipitation conditions for the May 19th, 2023 investigation.

Indicators of wetland hydrology are largely absent in upland areas.

7.0 WETLAND DELINEATION CONCLUSION

Two (2) stream features and one (1) wetland feature were delineated within the Survey Corridor by CED on March 2nd & 3rd, 2022 and May 19th, 2023. A total of 2,552 linear feet of perennial (R3) stream, 562 linear feet of intermittent (R4), and 0.23 acres of palustrine emergent (PEM) wetland were delineated. Field investigations were conducted in accordance with the manuals, methodologies, and regulatory guidance procedures as stated in Section 5.0 Wetland and Surface Water Delineation Methodology.

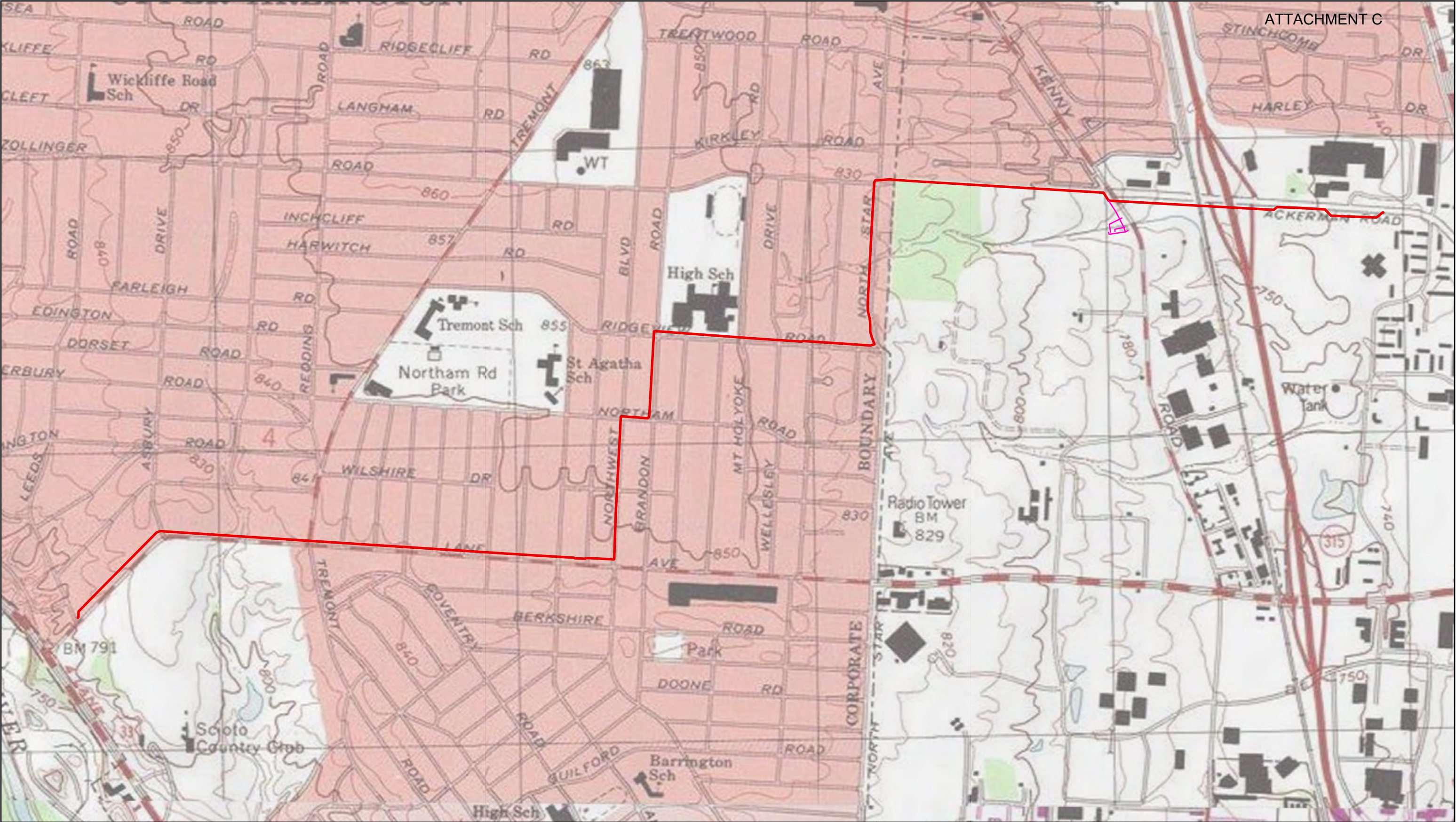
It is CED's professional opinion that Stream Features "1" and "2" are considered jurisdictional WOTUS since they drain into Olentangy River and Scioto River. The wetland can be considered jurisdictional WOTUS since it drains directly to the unnamed tributary to Olentangy River and Scioto River. The location and size of jurisdictional areas delineated are shown on Figure 5. Delineation Results (**Appendix A**).

8.0 REFERENCES

- Cowardin, L. M., V. Carter, F. C. Golet, and E. T. LaRoe. 1979. Classification of wetlands and deepwater habitats of the United States. U.S. Department of the Interior, Fish and Wildlife Service, Washington, D.C.
- Environmental Laboratory. 1987. "Corps of Engineers Wetlands Delineation Manual" Technical Report Y-87-1. US Army Engineer Waterways Experiment Station, Vicksburg, Miss.
- Environmental Laboratory. 2012. "Regional Supplement to the Corps of Engineers Wetland Delineation Manual: Eastern Mountains and Piedmont Region (Version 2.0)". Technical Report ERDC/EL TR-09-19. US Army Engineer Research and Development Center, Vicksburg, Miss.
- Federal Interagency Committee for Wetland Delineation. 1989. Federal Manual for Identifying and Delineation Jurisdictional Wetlands. U.S. Army Corps of Engineers, U.S. Environmental Protection Agency, U.S. Fish and Wildlife Service, and U.S.D.A. Soil Conservation Service, Washington D.C. Cooperative technical publication. 76 pp. plus appendices.
- Federal Emergency Management Agency (FEMA). 2019. Flood Map Service Center. <https://msc.fema.gov/portal>.
- National List of Hydric Soils 2010, United States Department of Agriculture Natural Resource Conservation Service, <https://www.nrcs.usda.gov/wps/portal/nrcs/main/soils/use/hydric/>
- Ohio Environmental Protection Agency (OhioEPA)*. (2022, February 25). Qualitative Habitat Evaluation Index (QHEI). https://ohioepa.custhelp.com/app/answers/detail/a_id/470/%7E/qualitative-habitat-evaluation-index-%28qhei%29
- United States Department of Agriculture. Natural Resources Conservation Service <http://websoilsurvey.nrcs.usda.gov/app/HomePage.htm>
- United States Fish and Wildlife Service. National Wetlands Inventory <http://www.fws.gov/nwi/Overview.html>
- USDA, NRCS. 2003. Field Indicators of Hydric Soils in the United States, Version 5.01, G.W. Hurt, P.M. Whited, and R.F. Pringle (eds.). USDA, NRCS in cooperation with the National technical Committee for Hydric Soils, Fort Worth, TX.

Appendix

Appendix A | Figures

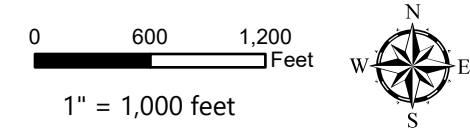


Prepared For:
NiSource Inc.
801 E. 86th Avenue
Merrillville, IN 46410

Prepared By:
Raleigh Office
2000 Regency Parkway Ste 295
Cary, NC 27518
T: 919.439.8461
www.colliersengineering.com



Engineering
& Design

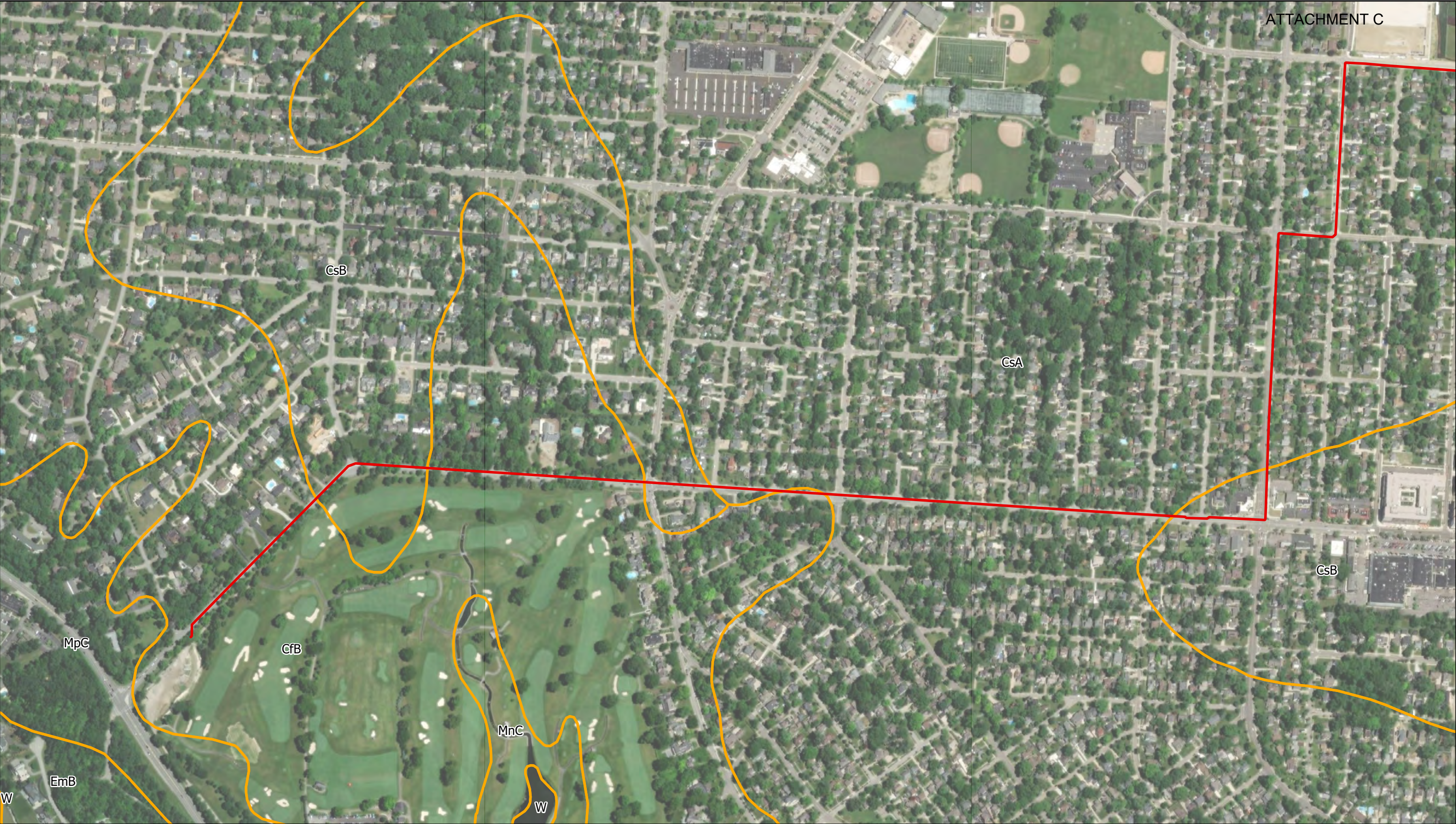


Source: USGS 24k Quadrangle: Northwest Columbus, OH

Figure 1 - Project Location Map
University
Franklin County, Ohio

Date:	MC Project #:	Drawn By:
5/25/2023	21004202A	KHY

- Lateral
- Main Line



Prepared For:
NiSource Inc.
801 E. 86th Avenue
Merrillville, IN 46410

Prepared By:
Raleigh Office
2000 Regency Parkway Ste 295
Cary, NC 27518
T: 919.439.8461
www.colliersengineering.com



0 250 500 Feet

1" = 500 feet

Source: USDA NRCS SSURGO



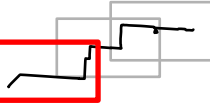
Figure 2 - Soil Series Map

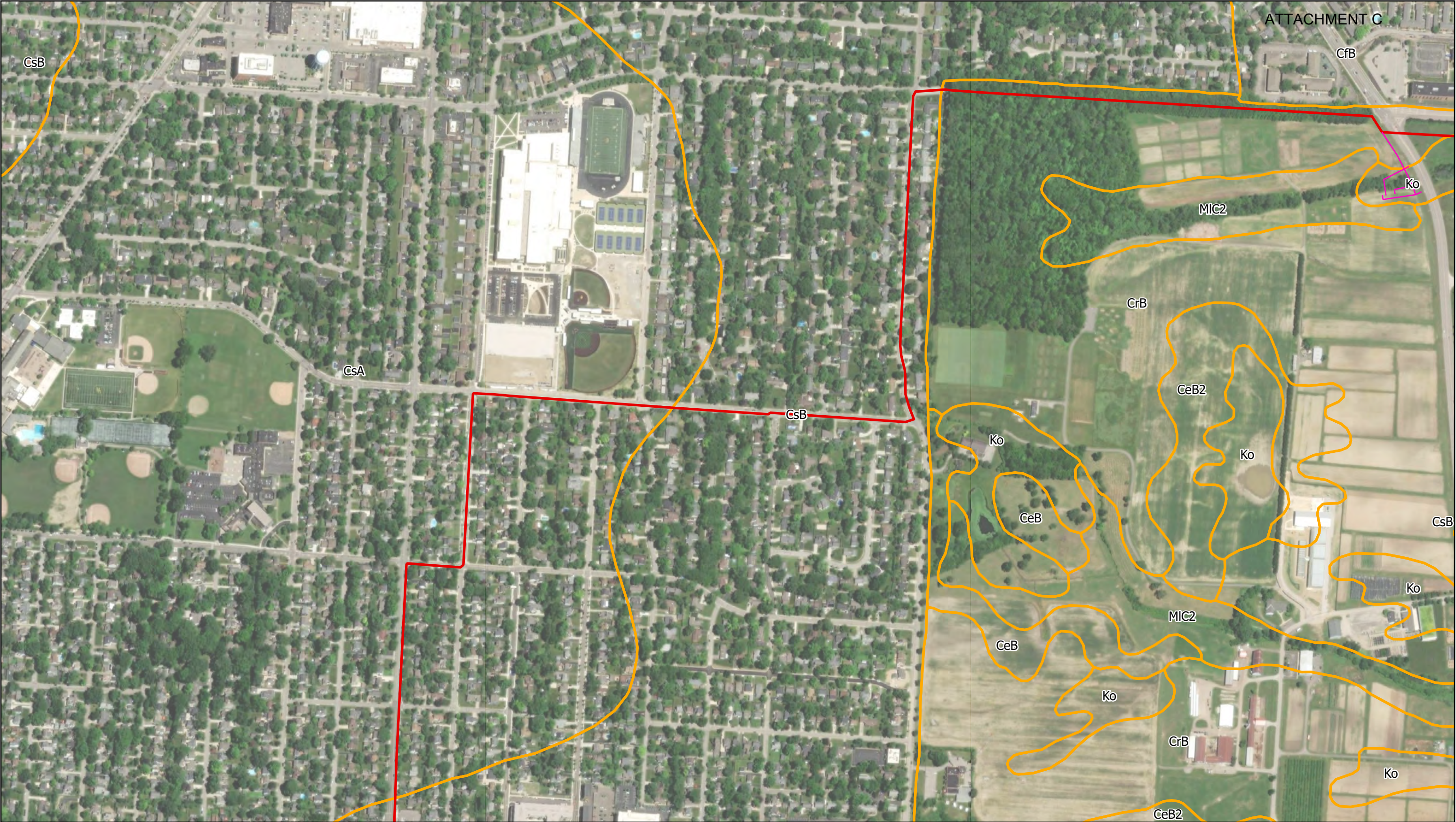
University

Franklin County, Ohio

Date:	MC Project #:	Drawn By:
5/25/2023	21004202A	KHY

- Lateral
- Main Line
- Soil Map Unit (SSURGO)





ATTACHMENT C

Prepared For:
NiSource Inc.
801 E. 86th Avenue
Merrillville, IN 46410

Prepared By:
Raleigh Office
2000 Regency Parkway Ste 295
Cary, NC 27518
T: 919.439.8461
www.colliersengineering.com

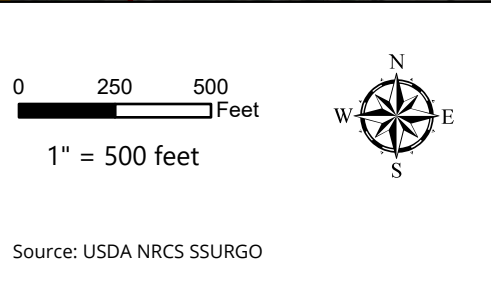


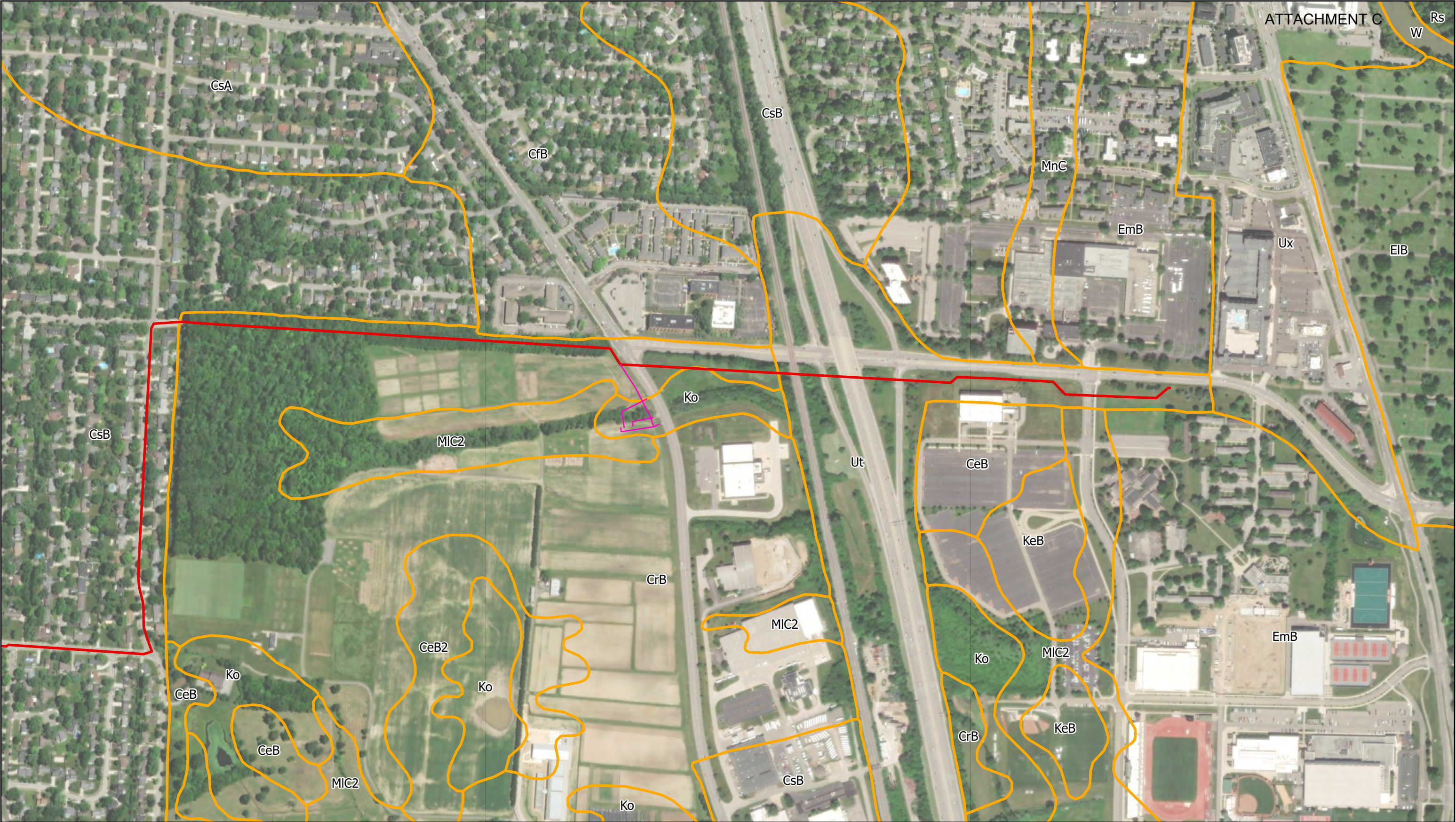
Figure 2 - Soil Series Map		
University		
Franklin County, Ohio		
Date:	MC Project #:	Drawn By:
5/25/2023	21004202A	KHY

— Lateral

— Main Line

— Soil Map Unit (SSURGO)

Sheet 2 of 3



ATTACHMENT C

Prepared For:
NiSource Inc.
801 E. 86th Avenue
Merrillville, IN 46410

Prepared By:
Raleigh Office
2000 Regency Parkway Ste 295
Cary, NC 27518
T: 919.439.8461
www.colliersengineering.com

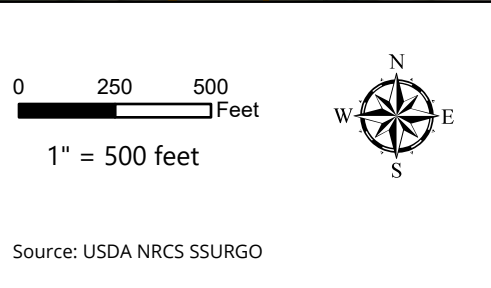


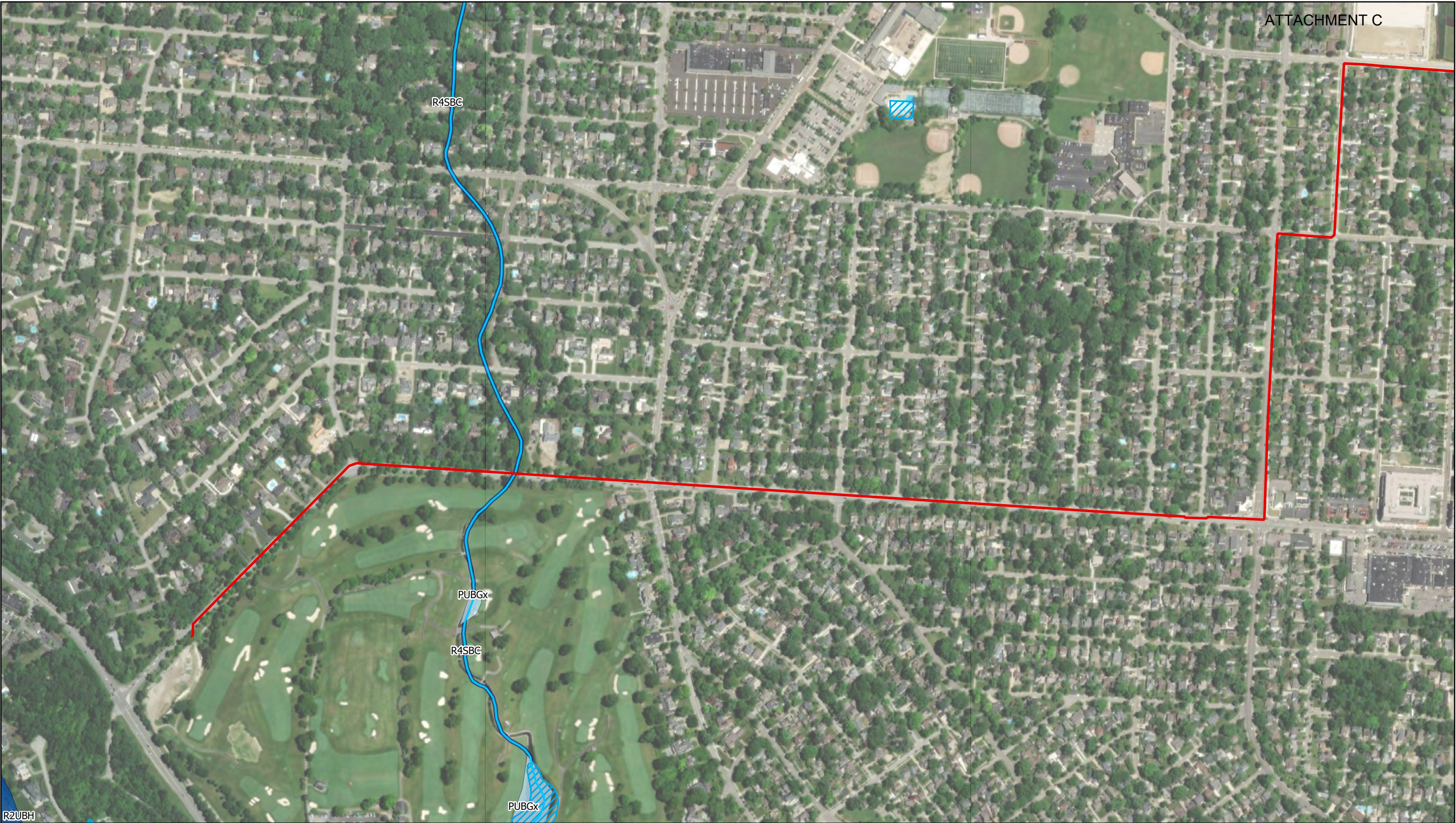
Figure 2 - Soil Series Map		
University		
Franklin County, Ohio		
Date:	MC Project #:	Drawn By:
5/25/2023	21004202A	KHY

— Lateral

— Main Line

○ Soil Map Unit (SSURGO)

Sheet 3 of 3



Prepared For:
NiSource Inc.
801 E. 86th Avenue
Merrillville, IN 46410

Prepared By:
Raleigh Office
2000 Regency Parkway Ste 295
Cary, NC 27518
T: 919.439.8461
www.colliersengineering.com

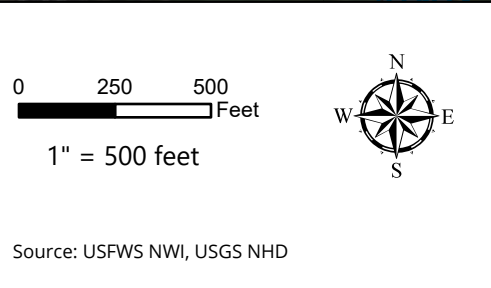


Figure 3 - NWI Series Map
University
Franklin County, Ohio

Date:	MC Project #:	Drawn By:
5/25/2023	21004202A	KHY

Lateral	Waterbody (NHD)
Main Line	Wetland Type
Stream (NHD)	Freshwater Pond
	Riverine



Prepared For:
NiSource Inc.
801 E. 86th Avenue
Merrillville, IN 46410

Prepared By:
Raleigh Office
2000 Regency Parkway Ste 295
Cary, NC 27518
T: 919.439.8461
www.colliersengineering.com

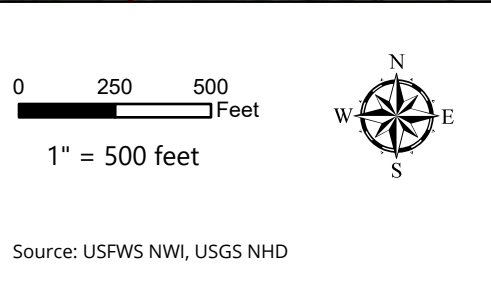


Figure 3 - NWI Series Map		
University		
Franklin County, Ohio		
Date:	MC Project #:	Drawn By:
5/25/2023	21004202A	KHY

Lateral

Main Line

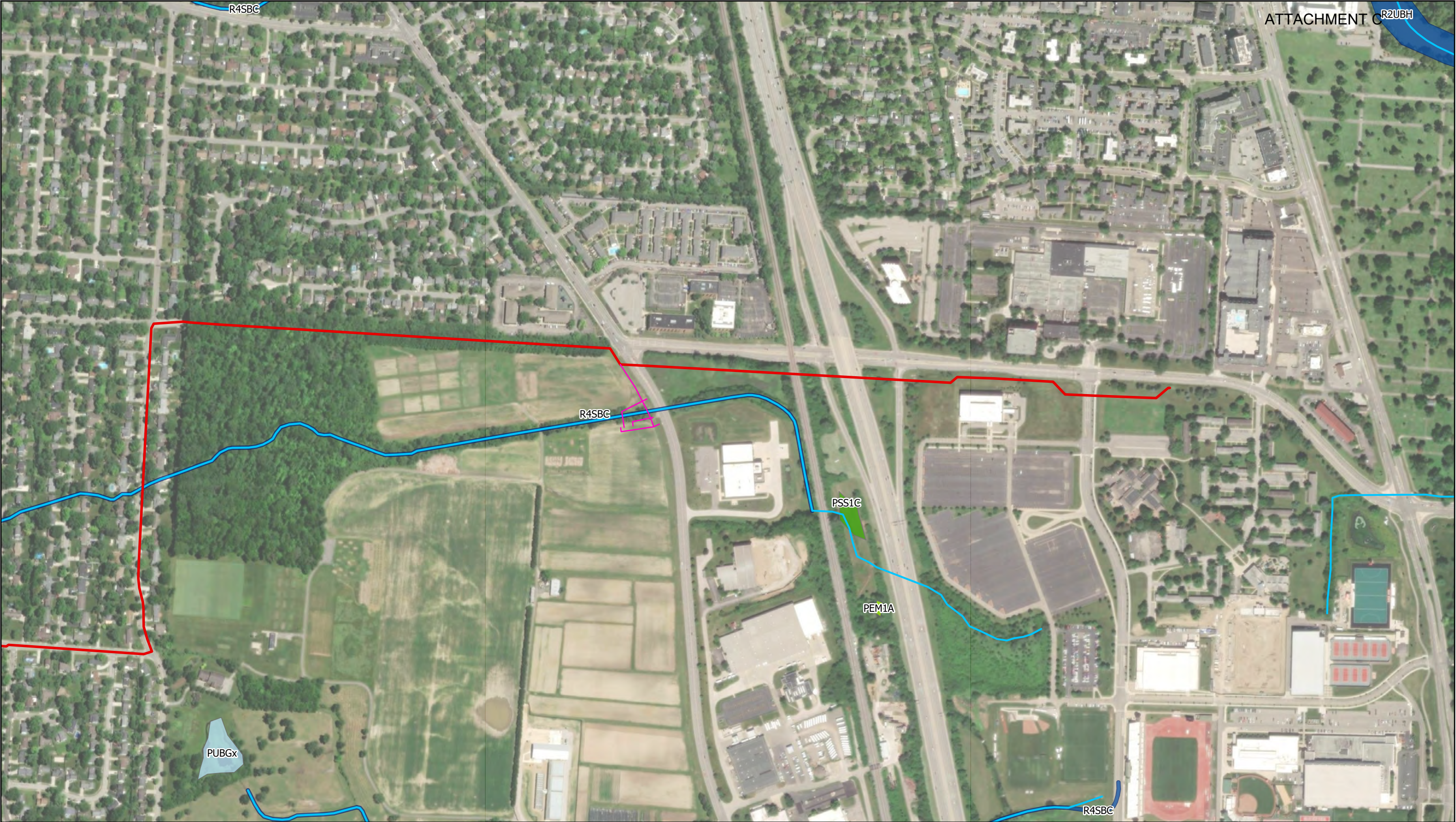
Stream (NHD)

Waterbody (NHD)

Wetland Type

 Freshwater Pond

Riverine



Prepared For:
NiSource Inc.
801 E. 86th Avenue
Merrillville, IN 46410

Prepared By:
Raleigh Office
2000 Regency Parkway Ste 295
Cary, NC 27518
T: 919.439.8461
www.colliersengineering.com

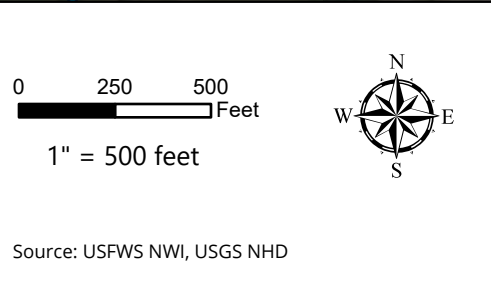


Figure 3 - NWI Series Map		
University		
Franklin County, Ohio		
Date:	MC Project #:	Drawn By:
5/25/2023	21004202A	KHY

Lateral

Main Line

Stream (NHD)

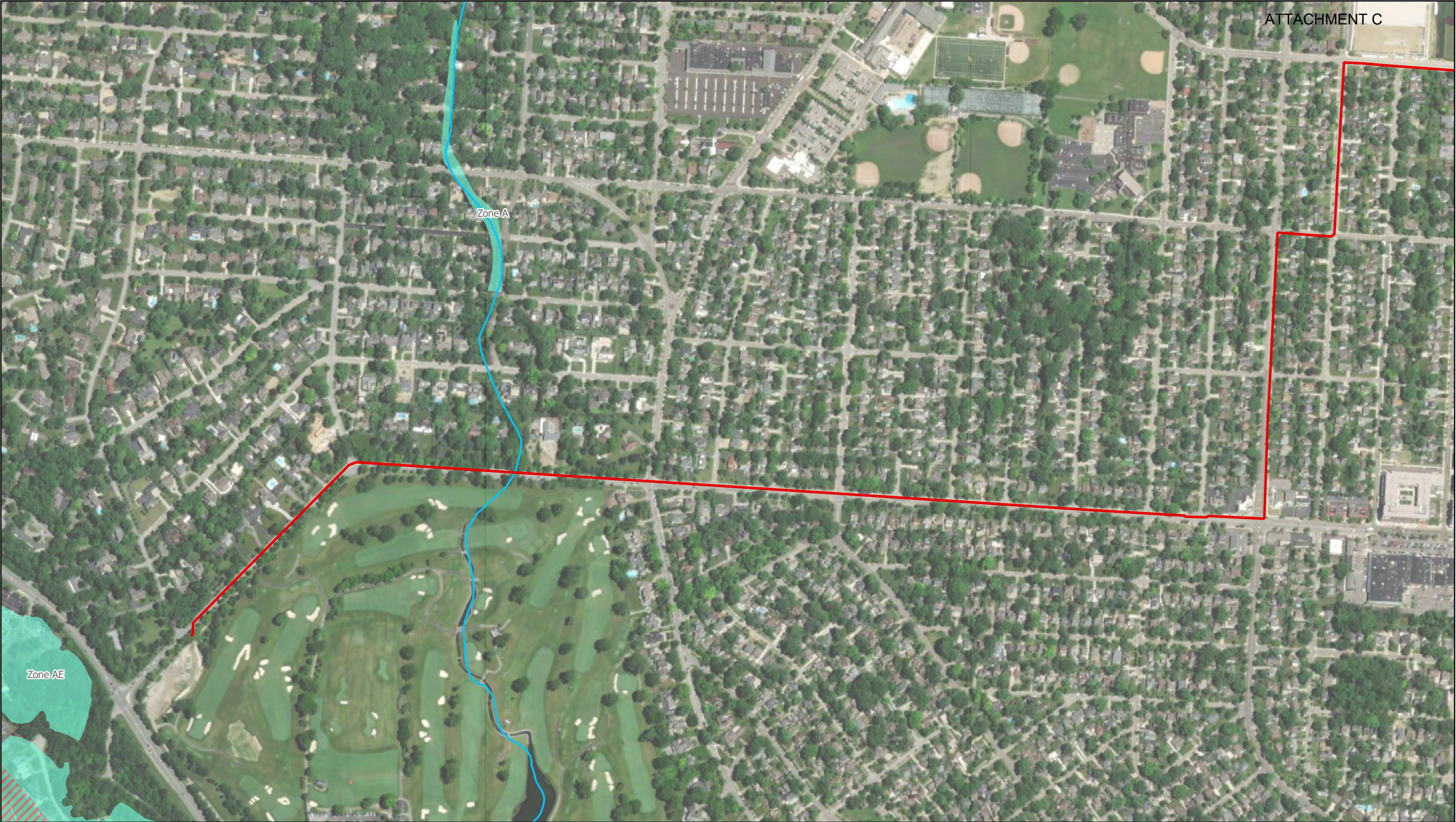
Freshwater Emergent Wetland

Freshwater Forested/Shrub Wetland

Freshwater Pond

Riverine

Wetland Type



Prepared For:
NiSource Inc.
801 E. 86th Avenue
Merrillville, IN 46410

Prepared By:
Raleigh Office
2000 Regency Parkway Ste 295
Cary, NC 27518
T: 919.439.8461
www.colliersengineering.com

NiSource

Colliers

Engineering
& Design



0 250 500 Feet

1" = 500 feet

Source: FEMA, USGS NHD



Figure 4 - Floodplain Series Map

University

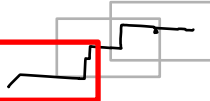
Franklin County, Ohio

Date:	MC Project #:	Drawn By:
5/25/2023	21004202A	KHY

- Lateral
- Main Line
- Stream (NHD)

- FEMA Flood Hazard Zone
- 1% Annual Chance Flood Hazard
 - Regulatory Floodway

Sheet 1 of 3





Prepared For:
NiSource Inc.
801 E. 86th Avenue
Merrillville, IN 46410

Prepared By:
Raleigh Office
2000 Regency Parkway Ste 295
Cary, NC 27518
T: 919.439.8461
www.colliersengineering.com



0 250 500 Feet

1" = 500 feet

Source: FEMA, USGS NHD

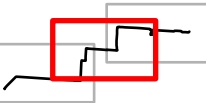


Figure 4 - Floodplain Series Map

University
Franklin County, Ohio

Date:	MC Project #:	Drawn By:
5/25/2023	21004202A	KHY

- Lateral
- Main Line
- Stream (NHD)





Prepared For:
NiSource Inc.
801 E. 86th Avenue
Merrillville, IN 46410

Prepared By:
Raleigh Office
2000 Regency Parkway Ste 295
Cary, NC 27518
T: 919.439.8461
www.colliersengineering.com

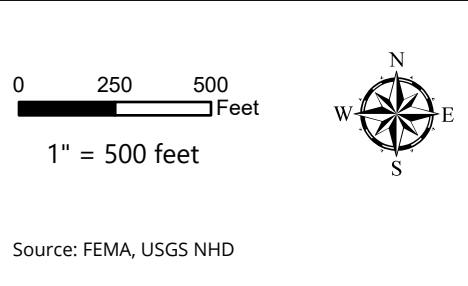


Figure 4 - Floodplain Series Map
University
Franklin County, Ohio

Date:	MC Project #:	Drawn By:
5/25/2023	21004202A	KHY

FEMA Flood Hazard Zone

- 1% Annual Chance Flood Hazard
- Regulatory Floodway

— Lateral
— Main Line
— Stream (NHD)



Prepared For:
NiSource Inc.
801 E. 86th Avenue
Merrillville, IN 46410

Prepared By:
Raleigh Office
2000 Regency Parkway Ste 295
Cary, NC 27518
T: 919.439.8461
www.colliersengineering.com

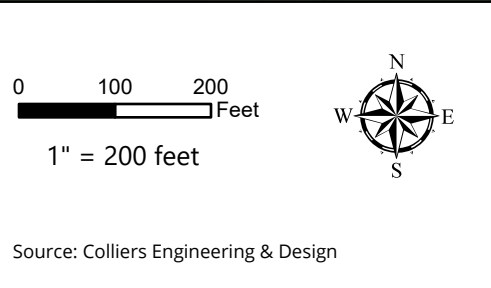


Figure 5 - Delineation Results		
University		
Franklin County, Ohio		
Date:	MC Project #:	Drawn By:
5/25/2023	21004202A	KHY

Lateral

Main Line

Study Corridor

Culvert

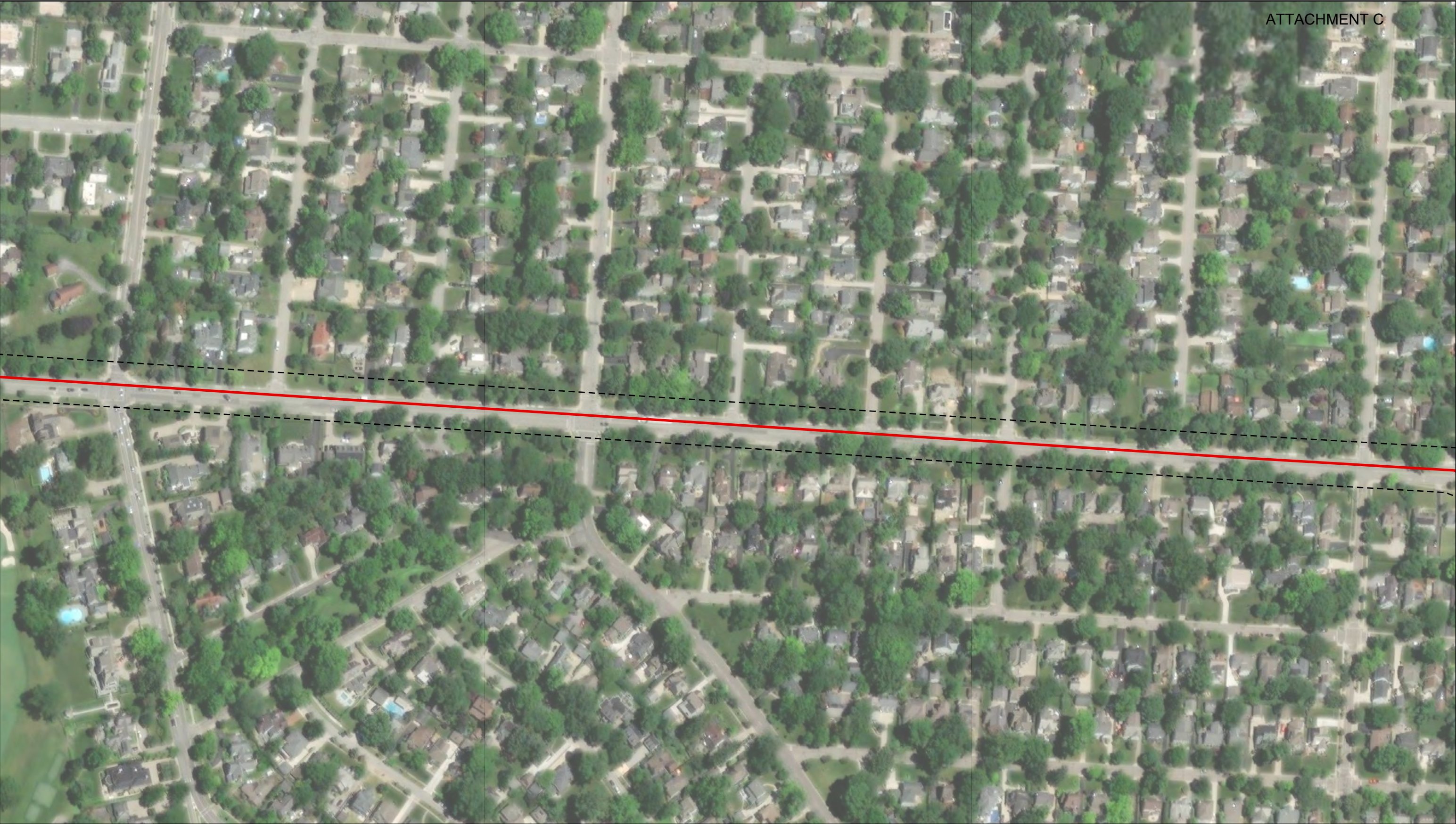
Stream Type

Perennial Stream

Stormwater Erosions

PEM Wetland

Sheet 1 of 7



Prepared For:
NiSource Inc.
801 E. 86th Avenue
Merrillville, IN 46410

Prepared By:
Raleigh Office
2000 Regency Parkway Ste 295
Cary, NC 27518
T: 919.439.8461
www.colliersengineering.com



0 100 200 Feet
1" = 200 feet



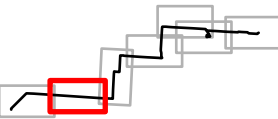
Source: Colliers Engineering & Design

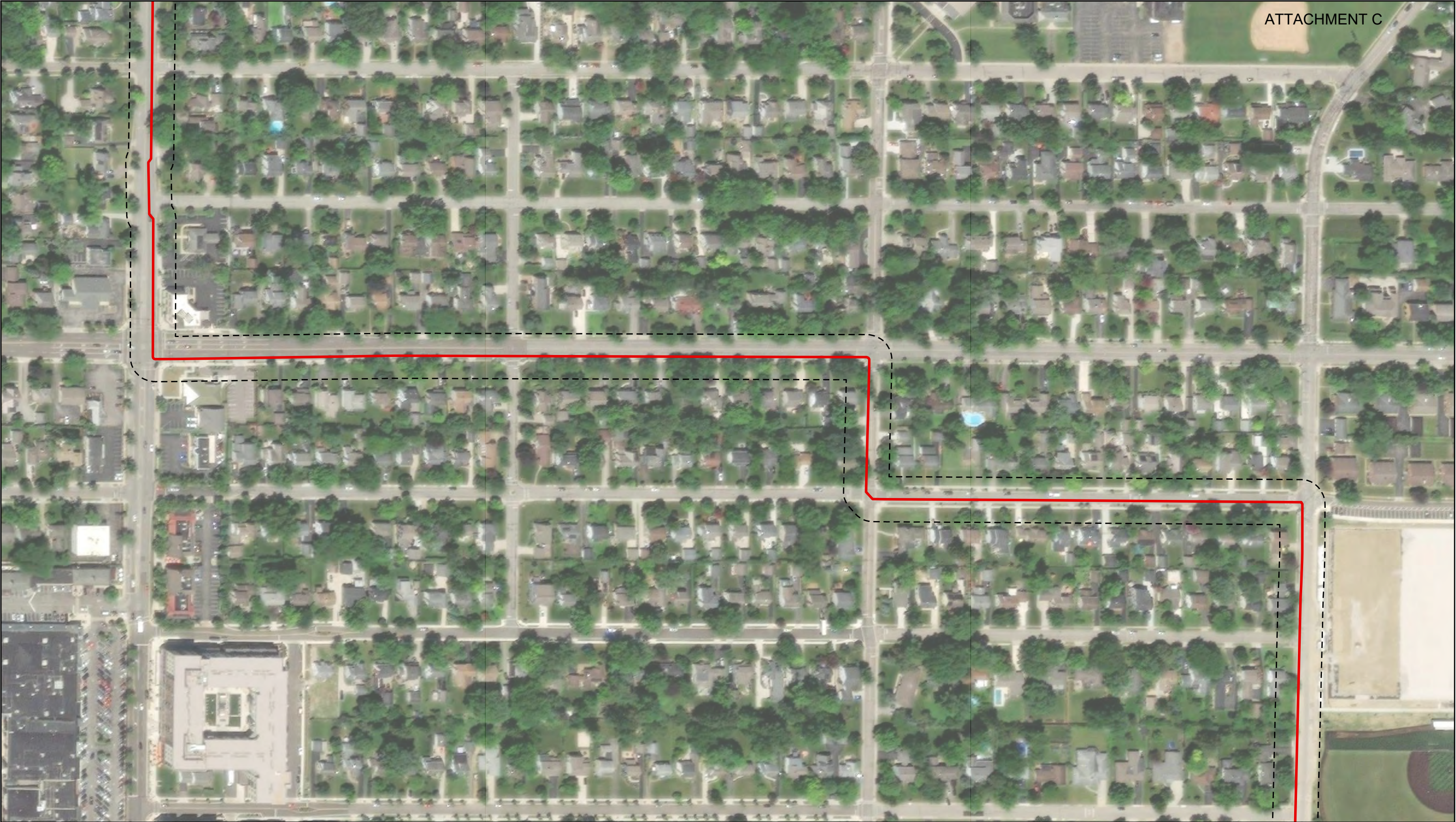
Figure 5 - Delineation Results

University
Franklin County, Ohio

Date:	MC Project #:	Drawn By:
5/25/2023	21004202A	KHY

- Study Corridor
- Stormwater Erosions
- PEM Wetland
- Lateral
- Main Line





Prepared For:
NiSource Inc.
801 E. 86th Avenue
Merrillville, IN 46410

Prepared By:
Raleigh Office
2000 Regency Parkway Ste 295
Cary, NC 27518
T: 919.439.8461
www.colliersengineering.com



0 100 200 Feet
1" = 200 feet



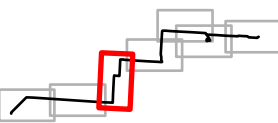
Source: Colliers Engineering & Design

Figure 5 - Delineation Results

University
Franklin County, Ohio

Date:	MC Project #:	Drawn By:
5/25/2023	21004202A	KHY

- Study Corridor
- Stormwater Erosions
- PEM Wetland
- Lateral
- Main Line





Prepared For:
NiSource Inc.
801 E. 86th Avenue
Merrillville, IN 46410

Prepared By:
Raleigh Office
2000 Regency Parkway Ste 295
Cary, NC 27518
T: 919.439.8461
www.colliersengineering.com

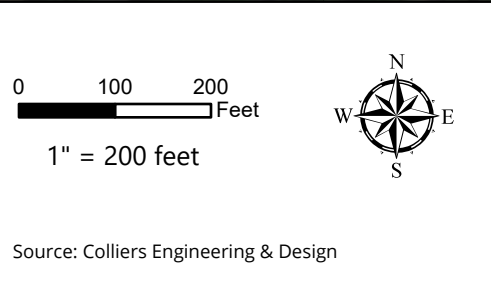


Figure 5 - Delineation Results

University
Franklin County, Ohio

Date:	MC Project #:	Drawn By:
5/25/2023	21004202A	KHY

- Lateral
- Main Line
- Study Corridor

- Stream Type
- Perennial Stream
 - Intermittent Stream
 - Stormwater Erosions
 - PEM Wetland



Prepared For:
NiSource Inc.
801 E. 86th Avenue
Merrillville, IN 46410

Prepared By:
Raleigh Office
2000 Regency Parkway Ste 295
Cary, NC 27518
T: 919.439.8461
www.colliersengineering.com

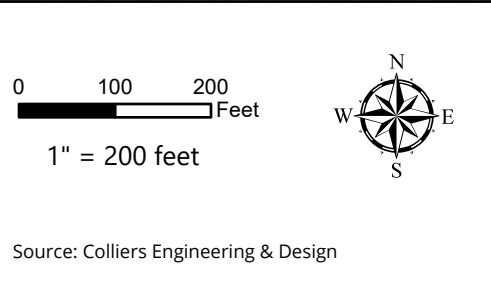
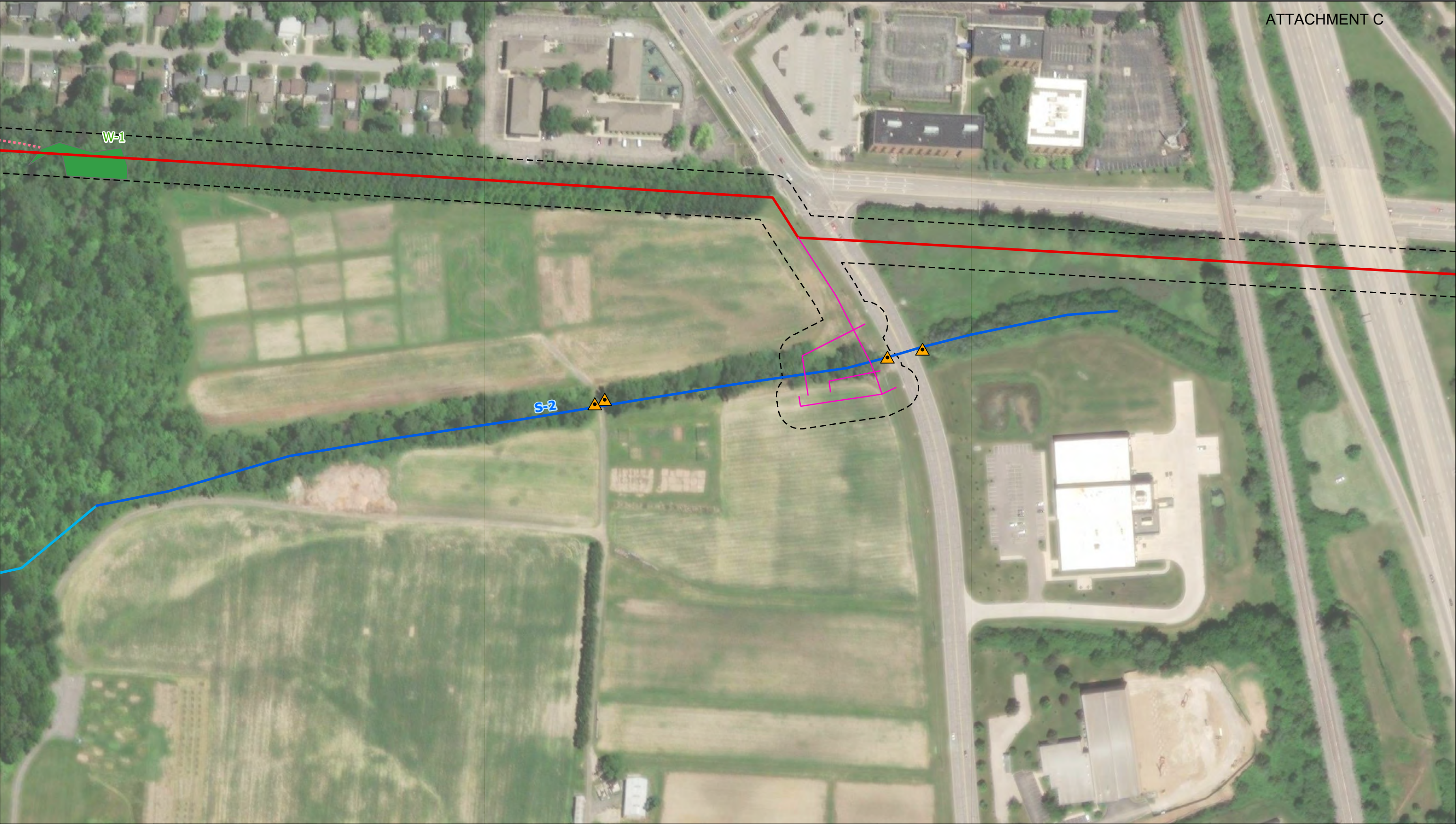


Figure 5 - Delineation Results
University
Franklin County, Ohio

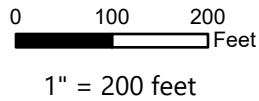
Date:	MC Project #:	Drawn By:
5/25/2023	21004202A	KHY

- Lateral
- Main Line
- - - Study Corridor
- ▲ Culvert
- Stream Type
 - Perennial Stream
 - ... Stormwater Erosions
 - PEM Wetland



Prepared For:
NiSource Inc.
801 E. 86th Avenue
Merrillville, IN 46410

Prepared By:
Raleigh Office
2000 Regency Parkway Ste 295
Cary, NC 27518
T: 919.439.8461
www.colliersengineering.com



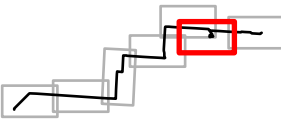
Source: Colliers Engineering & Design

Figure 5 - Delineation Results
University
Franklin County, Ohio

Date:	MC Project #:	Drawn By:
5/25/2023	21004202A	KHY

- Lateral
- Main Line
- Study Corridor
- Culvert

- Stream Type
- Perennial Stream
 - Intermittent Stream
 - Stormwater Erosions
 - PEM Wetland





Prepared For:
NiSource Inc.
801 E. 86th Avenue
Merrillville, IN 46410

Prepared By:
Raleigh Office
2000 Regency Parkway Ste 295
Cary, NC 27518
T: 919.439.8461
www.colliersengineering.com

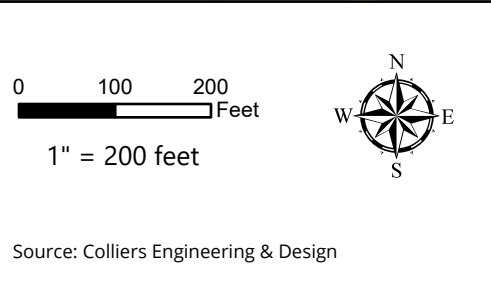
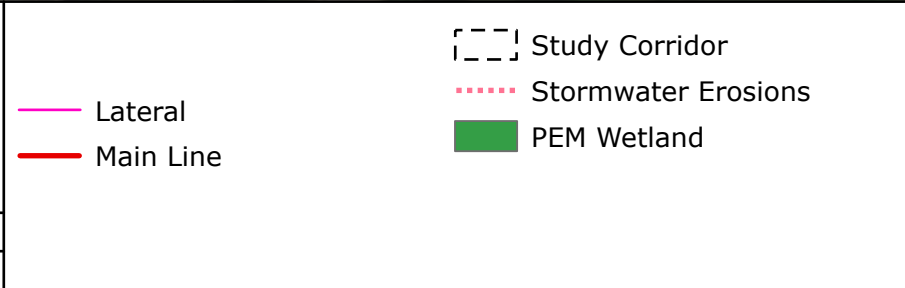
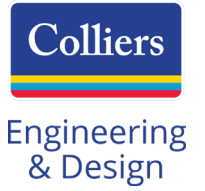


Figure 5 - Delineation Results
University
Franklin County, Ohio

Date:	MC Project #:	Drawn By:
5/25/2023	21004202A	KHY





Appendix B | Data Forms

WETLAND DETERMINATION DATA FORM – Midwest Region

Project/Site: NCHP City/County: Columbus / Franklin Sampling Date: 5/19/23
 Applicant/Owner: NiSource/Campos State: OH Sampling Point: W001-PEM
 Investigator(s): REK Section, Township, Range: T1N R18W
 Landform (hillslope, terrace, etc.): Slight depression Local relief (concave, convex, none): Concave
 Slope (%): 5 Lat: 40.018808 Long: -83.044274 Datum: NAD 83
 Soil Map Unit Name: Crosby silt loam, Southern Ohio Till Plain, 2-6% Slopes NWI classification: None

Are climatic / hydrologic conditions on the site typical for this time of year? Yes _____ No _____ (If no, explain in Remarks.)
 Are Vegetation _____, Soil _____, or Hydrology _____ significantly disturbed? Are "Normal Circumstances" present? Yes X No _____
 Are Vegetation _____, Soil _____, or Hydrology _____ naturally problematic? (If needed, explain any answers in Remarks.)

SUMMARY OF FINDINGS – Attach site map showing sampling point locations, transects, important features, etc.

Hydrophytic Vegetation Present?	Yes <u>X</u> No _____	Is the Sampled Area within a Wetland? Yes <u>X</u> No _____
Hydric Soil Present?	Yes <u>X</u> No _____	
Wetland Hydrology Present?	Yes <u>X</u> No _____	
Remarks: PEM rep to W001. Taken in forested area, wet understory with upland canopy coverage		

VEGETATION – Use scientific names of plants.

Tree Stratum (Plot size: <u>30x30</u>)	Absolute % Cover	Dominant Species?	Indicator Status	Dominance Test worksheet: Number of Dominant Species That Are OBL, FACW, or FAC: <u>5</u> (A) Total Number of Dominant Species Across All Strata: <u>5</u> (B) Percent of Dominant Species That Are OBL, FACW, or FAC: <u>100</u> (A/B)
1. <u>Acer rubrum</u>	<u>15</u>	<u>N</u>	<u>FAC</u>	
2. <u>Ulmus americana</u>	<u>20</u>	<u>Y</u>	<u>FACW</u>	
3. <u>Fraxinus pennsylvanica</u>	<u>10</u>	<u>N</u>	<u>FACW</u>	
4. <u>Acer saccharum</u>	<u>15</u>	<u>N</u>	<u>FACU</u>	
5. <u>Populus deltoides</u>	<u>20</u>	<u>Y</u>	<u>FAC</u>	
<u>80</u> = Total Cover				Hydrophytic Vegetation Indicators: <u>X</u> 1 - Rapid Test for Hydrophytic Vegetation <u>X</u> 2 - Dominance Test is >50% 3 - Prevalence Index is ≤3.0 ¹ 4 - Morphological Adaptations ¹ (Provide supporting data in Remarks or on a separate sheet) Problematic Hydrophytic Vegetation ¹ (Explain) ¹ Indicators of hydric soil and wetland hydrology must be present, unless disturbed or problematic.
Sapling/Shrub Stratum (Plot size: <u>15x15</u>)				
1. <u>Lonicera mackaii*</u>	<u>(15)</u>	<u>-</u>	<u>NL*</u>	
2. <u>Fraxinus pennsylvanica</u>	<u>10</u>	<u>Y</u>	<u>FACW</u>	
3. _____	_____	_____	_____	
<u>10</u> = Total Cover				Hydrophytic Vegetation Present? Yes <u>X</u> No _____
Herb Stratum (Plot size: <u>5x5</u>)				
1. <u>Impatiens capensis</u>	<u>35</u>	<u>Y</u>	<u>FACW</u>	
2. <u>Pilea pumila</u>	<u>60</u>	<u>Y</u>	<u>FACW</u>	
3. <u>Viola papilionacea</u>	<u>(5)</u>	<u>-</u>	<u>NL*</u>	
4. <u>Persicaria virginiana</u>	<u>2</u>	<u>N</u>	<u>FAC</u>	Remarks: (Include photo numbers here or on a separate sheet.) *Not listed in Midwest plant list, not included in hydric veg calcs Upland trees in canopy layer, outside of wetland boundaries.
5. <u>Iris pseudacorus</u>	<u>3</u>	<u>N</u>	<u>OBL</u>	
6. <u>Toxicodendron radicans</u>	<u>10</u>	<u>N</u>	<u>FAC</u>	
7. <u>Leersia oryzoides</u>	<u>15</u>	<u>N</u>	<u>OBL</u>	
8. _____	_____	_____	_____	
<u>125</u> = Total Cover				
Woody Vine Stratum (Plot size: <u>30x30</u>)				
1. <u>Absent</u>	_____	_____	_____	
2. _____	_____	_____	_____	
_____ = Total Cover				

SOIL

Profile Description: (Describe to the depth needed to document the indicator or confirm the absence of indicators.)

Depth (inches)	Matrix		Redox Features				Texture	Remarks
	Color (moist)	%	Color (moist)	%	Type ¹	Loc ²		
0.8	10 YR 2/1	100					Loam	
8-16	10 YR 2/1	90	10 YR 4/6	8	C	M/PL	Loam	
			10 YR 5/2	2	D	M		

¹Type: C=Concentration, D=Depletion, RM=Reduced Matrix, MS=Masked Sand Grains.²Location: PL=Pore Lining, M=Matrix.

Hydric Soil Indicators:

- | | |
|--|---|
| <input type="checkbox"/> Histosol (A1) | <input type="checkbox"/> Sandy Gleyed Matrix (S4) |
| <input type="checkbox"/> Histic Epipedon (A2) | <input type="checkbox"/> Sandy Redox (S5) |
| <input type="checkbox"/> Black Histic (A3) | <input type="checkbox"/> Stripped Matrix (S6) |
| <input type="checkbox"/> Hydrogen Sulfide (A4) | <input type="checkbox"/> Loamy Mucky Mineral (F1) |
| <input type="checkbox"/> Stratified Layers (A5) | <input type="checkbox"/> Loamy Gleyed Matrix (F2) |
| <input type="checkbox"/> 2 cm Muck (A10) | <input type="checkbox"/> Depleted Matrix (F3) |
| <input type="checkbox"/> Depleted Below Dark Surface (A11) | <input checked="" type="checkbox"/> Redox Dark Surface (F6) |
| <input type="checkbox"/> Thick Dark Surface (A12) | <input type="checkbox"/> Depleted Dark Surface (F7) |
| <input type="checkbox"/> Sandy Mucky Mineral (S1) | <input type="checkbox"/> Redox Depressions (F8) |
| <input type="checkbox"/> 5 cm Mucky Peat or Peat (S3) | |

Indicators for Problematic Hydric Soils³:

- ☐ Coast Prairie Redox (A16)
☐ Dark Surface (S7)
☐ Iron-Manganese Masses (F12)
☐ Very Shallow Dark Surface (TF12)
☐ Other (Explain in Remarks)

³Indicators of hydrophytic vegetation and wetland hydrology must be present, unless disturbed or problematic.

Restrictive Layer (if observed):

Type: _____

Depth (inches): _____

Hydric Soil Present? Yes ☒ No ☐

Remarks:

HYDROLOGY

Wetland Hydrology Indicators:

Primary Indicators (minimum of one is required; check all that apply)

- | | |
|---|--|
| <input type="checkbox"/> Surface Water (A1) | <input checked="" type="checkbox"/> Water-Stained Leaves (B9) |
| <input type="checkbox"/> High Water Table (A2) | <input type="checkbox"/> Aquatic Fauna (B13) |
| <input checked="" type="checkbox"/> Saturation (A3) | <input type="checkbox"/> True Aquatic Plants (B14) |
| <input type="checkbox"/> Water Marks (B1) | <input type="checkbox"/> Hydrogen Sulfide Odor (C1) |
| <input type="checkbox"/> Sediment Deposits (B2) | <input checked="" type="checkbox"/> Oxidized Rhizospheres on Living Roots (C3) |
| <input type="checkbox"/> Drift Deposits (B3) | <input type="checkbox"/> Presence of Reduced Iron (C4) |
| <input type="checkbox"/> Algal Mat or Crust (B4) | <input type="checkbox"/> Recent Iron Reduction in Tilled Soils (C6) |
| <input type="checkbox"/> Iron Deposits (B5) | <input type="checkbox"/> Thin Muck Surface (C7) |
| <input type="checkbox"/> Inundation Visible on Aerial Imagery (B7) | <input type="checkbox"/> Gauge or Well Data (D9) |
| <input checked="" type="checkbox"/> Sparsely Vegetated Concave Surface (B8) | <input type="checkbox"/> Other (Explain in Remarks) |

Secondary Indicators (minimum of two required)

- ☐ Surface Soil Cracks (B6)
☒ Drainage Patterns (B10)
☐ Dry-Season Water Table (C2)
☐ Crayfish Burrows (C8)
☐ Saturation Visible on Aerial Imagery (C9)
☐ Stunted or Stressed Plants (D1)
☒ Geomorphic Position (D2)
☒ FAC-Neutral Test (D5)

Field Observations:

Surface Water Present? Yes ☐ No ☒ Depth (inches): _____Water Table Present? Yes ☐ No ☒ Depth (inches): _____Saturation Present? Yes ☒ No ☐ Depth (inches): 8"
(includes capillary fringe)Wetland Hydrology Present? Yes ☒ No ☐

Describe Recorded Data (stream gauge, monitoring well, aerial photos, previous inspections), if available:

Remarks:

linear drainage feature inlet to wetland

WETLAND DETERMINATION DATA FORM – Midwest Region

Project/Site: NCHP City/County: Columbus / Franklin Sampling Date: 5/19/23
 Applicant/Owner: NiSource/Campos State: OH Sampling Point: W001-UPL
 Investigator(s): REK Section, Township, Range: T1N R18W
 Landform (hillslope, terrace, etc.): Flat Local relief (concave, convex, none): None
 Slope (%): 0 Lat: 40.018832 Long: -83.044912 Datum: NAD 83
 Soil Map Unit Name: Crosby silt loam, Southern Ohio Till Plain, 2-6% Slopes NWI classification: None
 Are climatic / hydrologic conditions on the site typical for this time of year? Yes ☒ No ☐ (If no, explain in Remarks.)
 Are Vegetation ☐, Soil ☐, or Hydrology ☐ significantly disturbed? Are "Normal Circumstances" present? Yes ☒ No ☐
 Are Vegetation ☐, Soil ☐, or Hydrology ☐ naturally problematic? (If needed, explain any answers in Remarks.)

SUMMARY OF FINDINGS – Attach site map showing sampling point locations, transects, important features, etc.

Hydrophytic Vegetation Present?	Yes <input type="checkbox"/> No <input checked="" type="checkbox"/>	Is the Sampled Area within a Wetland? Yes <input type="checkbox"/> No <input checked="" type="checkbox"/>
Hydric Soil Present?	Yes <input type="checkbox"/> No <input checked="" type="checkbox"/>	
Wetland Hydrology Present?	Yes <input type="checkbox"/> No <input checked="" type="checkbox"/>	
Remarks: Upland rep to W001. Taken upslope of wetland, in woodlot		

VEGETATION – Use scientific names of plants.

Tree Stratum (Plot size: <u>30x30</u>)	Absolute % Cover	Dominant Species?	Indicator Status	Dominance Test worksheet: Number of Dominant Species That Are OBL, FACW, or FAC: <u>1</u> (A) Total Number of Dominant Species Across All Strata: <u>3</u> (B) Percent of Dominant Species That Are OBL, FACW, or FAC: <u>33%</u> (A/B)																
1. <u>Quercus rubra</u>	<u>30</u>	<u>Y</u>	<u>FACU</u>																	
2. <u>Acer saccharum</u>	<u>35</u>	<u>Y</u>	<u>FACU</u>																	
3. <u>Fagus grandifolia</u>	<u>15</u>	<u>N</u>	<u>FACU</u>																	
4. _____	_____	_____	_____																	
5. _____	_____	_____	_____	Prevalence Index worksheet: <table border="0"> <tr> <td>Total % Cover of:</td> <td>Multiply by:</td> </tr> <tr> <td>OBL species <u>0</u></td> <td>x 1 = <u>0</u></td> </tr> <tr> <td>FACW species <u>0</u></td> <td>x 2 = <u>0</u></td> </tr> <tr> <td>FAC species <u>20</u></td> <td>x 3 = <u>60</u></td> </tr> <tr> <td>FACU species <u>85</u></td> <td>x 4 = <u>340</u></td> </tr> <tr> <td>UPL species <u>0</u></td> <td>x 5 = <u>0</u></td> </tr> <tr> <td>Column Totals: <u>105</u> (A)</td> <td><u>400</u> (B)</td> </tr> <tr> <td colspan="2">Prevalence Index = B/A = <u>3.8</u></td> </tr> </table>	Total % Cover of:	Multiply by:	OBL species <u>0</u>	x 1 = <u>0</u>	FACW species <u>0</u>	x 2 = <u>0</u>	FAC species <u>20</u>	x 3 = <u>60</u>	FACU species <u>85</u>	x 4 = <u>340</u>	UPL species <u>0</u>	x 5 = <u>0</u>	Column Totals: <u>105</u> (A)	<u>400</u> (B)	Prevalence Index = B/A = <u>3.8</u>	
Total % Cover of:	Multiply by:																			
OBL species <u>0</u>	x 1 = <u>0</u>																			
FACW species <u>0</u>	x 2 = <u>0</u>																			
FAC species <u>20</u>	x 3 = <u>60</u>																			
FACU species <u>85</u>	x 4 = <u>340</u>																			
UPL species <u>0</u>	x 5 = <u>0</u>																			
Column Totals: <u>105</u> (A)	<u>400</u> (B)																			
Prevalence Index = B/A = <u>3.8</u>																				
Sapling/Shrub Stratum (Plot size: <u>15x15</u>)																				
1. <u>Lonicera mackaii</u>	<u>80</u>	<u>-</u>	<u>NL*</u>																	
2. <u>Tsuga canadensis</u>	<u>5</u>	<u>Y</u>	<u>FACU</u>																	
3. _____	_____	_____	_____																	
4. _____	_____	_____	_____																	
5. _____	_____	_____	_____	Hydrophytic Vegetation Indicators: ___ 1 - Rapid Test for Hydrophytic Vegetation ___ 2 - Dominance Test is >50% ___ 3 - Prevalence Index is ≤3.0 ¹ ___ 4 - Morphological Adaptations ¹ (Provide supporting data in Remarks or on a separate sheet) ___ Problematic Hydrophytic Vegetation ¹ (Explain) ¹ Indicators of hydric soil and wetland hydrology must be present, unless disturbed or problematic.																
Herb Stratum (Plot size: <u>5x5</u>)																				
1. <u>Lonicera mackaii</u>	<u>15</u>	<u>-</u>	<u>NL*</u>																	
2. <u>Toxicodendron radicans</u>	<u>20</u>	<u>Y</u>	<u>FAC</u>																	
3. _____	_____	_____	_____																	
4. _____	_____	_____	_____																	
5. _____	_____	_____	_____	Hydrophytic Vegetation Present? Yes <input type="checkbox"/> No <input checked="" type="checkbox"/>																
6. _____	_____	_____	_____																	
7. _____	_____	_____	_____																	
8. _____	_____	_____	_____																	
9. _____	_____	_____	_____																	
10. _____	_____	_____	_____	Woody Vine Stratum (Plot size: <u>30x30</u>)																
1. <u>Absent</u>	_____	_____	_____																	
2. _____	_____	_____	_____	Remarks: (Include photo numbers here or on a separate sheet.) *Not listed in Midwest plant list, not included in hydric veg calcs																
_____ = Total Cover																				

SOIL

Profile Description: (Describe to the depth needed to document the indicator or confirm the absence of indicators.)

Depth (inches)	Matrix		Redox Features				Texture	Remarks
	Color (moist)	%	Color (moist)	%	Type ¹	Loc ²		
0-12	10 YR 3/3	100					Loam	

¹Type: C=Concentration, D=Depletion, RM=Reduced Matrix, MS=Masked Sand Grains.²Location: PL=Pore Lining, M=Matrix.

Hydric Soil Indicators:

- | | |
|--|---|
| <input type="checkbox"/> Histosol (A1) | <input type="checkbox"/> Sandy Gleyed Matrix (S4) |
| <input type="checkbox"/> Histic Epipedon (A2) | <input type="checkbox"/> Sandy Redox (S5) |
| <input type="checkbox"/> Black Histic (A3) | <input type="checkbox"/> Stripped Matrix (S6) |
| <input type="checkbox"/> Hydrogen Sulfide (A4) | <input type="checkbox"/> Loamy Mucky Mineral (F1) |
| <input type="checkbox"/> Stratified Layers (A5) | <input type="checkbox"/> Loamy Gleyed Matrix (F2) |
| <input type="checkbox"/> 2 cm Muck (A10) | <input type="checkbox"/> Depleted Matrix (F3) |
| <input type="checkbox"/> Depleted Below Dark Surface (A11) | <input type="checkbox"/> Redox Dark Surface (F6) |
| <input type="checkbox"/> Thick Dark Surface (A12) | <input type="checkbox"/> Depleted Dark Surface (F7) |
| <input type="checkbox"/> Sandy Mucky Mineral (S1) | <input type="checkbox"/> Redox Depressions (F8) |
| <input type="checkbox"/> 5 cm Mucky Peat or Peat (S3) | |

Indicators for Problematic Hydric Soils³:

- | |
|---|
| <input type="checkbox"/> Coast Prairie Redox (A16) |
| <input type="checkbox"/> Dark Surface (S7) |
| <input type="checkbox"/> Iron-Manganese Masses (F12) |
| <input type="checkbox"/> Very Shallow Dark Surface (TF12) |
| <input type="checkbox"/> Other (Explain in Remarks) |

³Indicators of hydrophytic vegetation and wetland hydrology must be present, unless disturbed or problematic.

Restrictive Layer (if observed):

Type: _____

Depth (inches): _____

Hydric Soil Present? Yes _____ No ☒

Remarks:

HYDROLOGY

Wetland Hydrology Indicators:

Primary Indicators (minimum of one is required; check all that apply)

- | | |
|--|---|
| <input type="checkbox"/> Surface Water (A1) | <input type="checkbox"/> Water-Stained Leaves (B9) |
| <input type="checkbox"/> High Water Table (A2) | <input type="checkbox"/> Aquatic Fauna (B13) |
| <input type="checkbox"/> Saturation (A3) | <input type="checkbox"/> True Aquatic Plants (B14) |
| <input type="checkbox"/> Water Marks (B1) | <input type="checkbox"/> Hydrogen Sulfide Odor (C1) |
| <input type="checkbox"/> Sediment Deposits (B2) | <input type="checkbox"/> Oxidized Rhizospheres on Living Roots (C3) |
| <input type="checkbox"/> Drift Deposits (B3) | <input type="checkbox"/> Presence of Reduced Iron (C4) |
| <input type="checkbox"/> Algal Mat or Crust (B4) | <input type="checkbox"/> Recent Iron Reduction in Tilled Soils (C6) |
| <input type="checkbox"/> Iron Deposits (B5) | <input type="checkbox"/> Thin Muck Surface (C7) |
| <input type="checkbox"/> Inundation Visible on Aerial Imagery (B7) | <input type="checkbox"/> Gauge or Well Data (D9) |
| <input type="checkbox"/> Sparsely Vegetated Concave Surface (B8) | <input type="checkbox"/> Other (Explain in Remarks) |

Secondary Indicators (minimum of two required)

- | |
|--|
| <input type="checkbox"/> Surface Soil Cracks (B6) |
| <input type="checkbox"/> Drainage Patterns (B10) |
| <input type="checkbox"/> Dry-Season Water Table (C2) |
| <input type="checkbox"/> Crayfish Burrows (C8) |
| <input type="checkbox"/> Saturation Visible on Aerial Imagery (C9) |
| <input type="checkbox"/> Stunted or Stressed Plants (D1) |
| <input type="checkbox"/> Geomorphic Position (D2) |
| <input type="checkbox"/> FAC-Neutral Test (D5) |

Field Observations:

Surface Water Present? Yes _____ No ☒ Depth (inches): _____Water Table Present? Yes _____ No ☒ Depth (inches): _____Saturation Present? Yes _____ No ☒ Depth (inches): _____
(includes capillary fringe)Wetland Hydrology Present? Yes _____ No ☒

Describe Recorded Data (stream gauge, monitoring well, aerial photos, previous inspections), if available:

N/A

Remarks:

No primary or secondary indicators observed

WETLAND DETERMINATION DATA FORM – Midwest Region

Project/Site: NCHP City/County: Columbus / Franklin Sampling Date: 5/19/23
 Applicant/Owner: NiSource/Campos State: OH Sampling Point: STP001
 Investigator(s): REK Section, Township, Range: T1N R18W
 Landform (hillslope, terrace, etc.): Flat Local relief (concave, convex, none): None
 Slope (%): 0 Lat: 40.018755 Long: -83.041464 Datum: NAD 83
 Soil Map Unit Name: Crosby silt loam, Southern Ohio Till Plain, 2-6% Slopes NWI classification: None

Are climatic / hydrologic conditions on the site typical for this time of year? Yes ☐ No ☐ (If no, explain in Remarks.)
 Are Vegetation ☐, Soil ☐, or Hydrology ☐ significantly disturbed? Are "Normal Circumstances" present? Yes ☒ No ☐
 Are Vegetation ☐, Soil ☐, or Hydrology ☐ naturally problematic? (If needed, explain any answers in Remarks.)

SUMMARY OF FINDINGS – Attach site map showing sampling point locations, transects, important features, etc.

Hydrophytic Vegetation Present?	Yes <input type="checkbox"/> No <input checked="" type="checkbox"/>	Is the Sampled Area within a Wetland? Yes <input type="checkbox"/> No <input checked="" type="checkbox"/>
Hydric Soil Present?	Yes <input type="checkbox"/> No <input checked="" type="checkbox"/>	
Wetland Hydrology Present?	Yes <input type="checkbox"/> No <input checked="" type="checkbox"/>	
Remarks: Representative upland habitat - taken in woodlot between residential and agriculture uses		

VEGETATION – Use scientific names of plants.

Tree Stratum (Plot size: <u>30x30</u>)	Absolute % Cover	Dominant Species?	Indicator Status	Dominance Test worksheet: Number of Dominant Species That Are OBL, FACW, or FAC: <u>1</u> (A) Total Number of Dominant Species Across All Strata: <u>2</u> (B) Percent of Dominant Species That Are OBL, FACW, or FAC: <u>50%</u> (A/B)																
1. <u>Quercus rubra</u>	<u>60</u>	<u>Y</u>	<u>FACU</u>																	
2. <u>Ulmus rubra</u>	<u>25</u>	<u>Y</u>	<u>FAC</u>																	
3. <u>Fagus grandifolia</u>	<u>10</u>	<u>N</u>	<u>FAC</u>																	
4. <u>Acer saccharum</u>	<u>5</u>	<u>N</u>	<u>FACU</u>																	
5. _____	<u>100</u> = Total Cover			Prevalence Index worksheet: <table border="0"> <tr> <td>Total % Cover of:</td> <td>Multiply by:</td> </tr> <tr> <td>OBL species <u>-</u></td> <td>x 1 = <u>-</u></td> </tr> <tr> <td>FACW species <u>-</u></td> <td>x 2 = <u>-</u></td> </tr> <tr> <td>FAC species <u>35</u></td> <td>x 3 = <u>105</u></td> </tr> <tr> <td>FACU species <u>65</u></td> <td>x 4 = <u>260</u></td> </tr> <tr> <td>UPL species <u>-</u></td> <td>x 5 = <u>-</u></td> </tr> <tr> <td>Column Totals: <u>100</u> (A)</td> <td><u>365</u> (B)</td> </tr> <tr> <td colspan="2">Prevalence Index = B/A = <u>3.65</u></td> </tr> </table>	Total % Cover of:	Multiply by:	OBL species <u>-</u>	x 1 = <u>-</u>	FACW species <u>-</u>	x 2 = <u>-</u>	FAC species <u>35</u>	x 3 = <u>105</u>	FACU species <u>65</u>	x 4 = <u>260</u>	UPL species <u>-</u>	x 5 = <u>-</u>	Column Totals: <u>100</u> (A)	<u>365</u> (B)	Prevalence Index = B/A = <u>3.65</u>	
Total % Cover of:	Multiply by:																			
OBL species <u>-</u>	x 1 = <u>-</u>																			
FACW species <u>-</u>	x 2 = <u>-</u>																			
FAC species <u>35</u>	x 3 = <u>105</u>																			
FACU species <u>65</u>	x 4 = <u>260</u>																			
UPL species <u>-</u>	x 5 = <u>-</u>																			
Column Totals: <u>100</u> (A)	<u>365</u> (B)																			
Prevalence Index = B/A = <u>3.65</u>																				
Sapling/Shrub Stratum (Plot size: <u>15x15</u>)																				
1. <u>Lonicera mackaii</u>	<u>90</u>	<u>-</u>	<u>NL*</u>																	
2. _____																				
3. _____																				
4. _____																				
5. _____																				
Herb Stratum (Plot size: <u>5x5</u>)																				
1. <u>Absent</u>																				
2. _____																				
3. _____																				
4. _____																				
5. _____																				
6. _____																				
7. _____																				
8. _____																				
9. _____																				
10. _____																				
Woody Vine Stratum (Plot size: <u>30x30</u>)																				
1. <u>Absent</u>																				
2. _____																				
_____ = Total Cover																				
Remarks: (Include photo numbers here or on a separate sheet.) *Not listed in Midwest plant list, not included in hydric veg calcs																				

SOIL

Profile Description: (Describe to the depth needed to document the indicator or confirm the absence of indicators.)

Depth (inches)	Matrix		Redox Features				Texture	Remarks
	Color (moist)	%	Color (moist)	%	Type ¹	Loc ²		
0-14	10YR 3/3	100					Loam	

¹Type: C=Concentration, D=Depletion, RM=Reduced Matrix, MS=Masked Sand Grains. ²Location: PL=Pore Lining, M=Matrix.

Hydric Soil Indicators:

<input type="checkbox"/> Histosol (A1)	<input type="checkbox"/> Sandy Gleyed Matrix (S4)	Indicators for Problematic Hydric Soils³:
<input type="checkbox"/> Histic Epipedon (A2)	<input type="checkbox"/> Sandy Redox (S5)	
<input type="checkbox"/> Black Histic (A3)	<input type="checkbox"/> Stripped Matrix (S6)	
<input type="checkbox"/> Hydrogen Sulfide (A4)	<input type="checkbox"/> Loamy Mucky Mineral (F1)	
<input type="checkbox"/> Stratified Layers (A5)	<input type="checkbox"/> Loamy Gleyed Matrix (F2)	
<input type="checkbox"/> 2 cm Muck (A10)	<input type="checkbox"/> Depleted Matrix (F3)	
<input type="checkbox"/> Depleted Below Dark Surface (A11)	<input type="checkbox"/> Redox Dark Surface (F6)	
<input type="checkbox"/> Thick Dark Surface (A12)	<input type="checkbox"/> Depleted Dark Surface (F7)	
<input type="checkbox"/> Sandy Mucky Mineral (S1)	<input type="checkbox"/> Redox Depressions (F8)	
<input type="checkbox"/> 5 cm Mucky Peat or Peat (S3)		

³Indicators of hydrophytic vegetation and wetland hydrology must be present, unless disturbed or problematic.

Restrictive Layer (if observed):

Type: _____

Depth (inches): _____

Hydric Soil Present? Yes _____ No ☒

Remarks:

HYDROLOGY

Wetland Hydrology Indicators:

Primary Indicators (minimum of one is required; check all that apply)		Secondary Indicators (minimum of two required)
<input type="checkbox"/> Surface Water (A1)	<input type="checkbox"/> Water-Stained Leaves (B9)	<input type="checkbox"/> Surface Soil Cracks (B6)
<input type="checkbox"/> High Water Table (A2)	<input type="checkbox"/> Aquatic Fauna (B13)	<input type="checkbox"/> Drainage Patterns (B10)
<input type="checkbox"/> Saturation (A3)	<input type="checkbox"/> True Aquatic Plants (B14)	<input type="checkbox"/> Dry-Season Water Table (C2)
<input type="checkbox"/> Water Marks (B1)	<input type="checkbox"/> Hydrogen Sulfide Odor (C1)	<input type="checkbox"/> Crayfish Burrows (C8)
<input type="checkbox"/> Sediment Deposits (B2)	<input type="checkbox"/> Oxidized Rhizospheres on Living Roots (C3)	<input type="checkbox"/> Saturation Visible on Aerial Imagery (C9)
<input type="checkbox"/> Drift Deposits (B3)	<input type="checkbox"/> Presence of Reduced Iron (C4)	<input type="checkbox"/> Stunted or Stressed Plants (D1)
<input type="checkbox"/> Algal Mat or Crust (B4)	<input type="checkbox"/> Recent Iron Reduction in Tilled Soils (C6)	<input type="checkbox"/> Geomorphic Position (D2)
<input type="checkbox"/> Iron Deposits (B5)	<input type="checkbox"/> Thin Muck Surface (C7)	<input type="checkbox"/> FAC-Neutral Test (D5)
<input type="checkbox"/> Inundation Visible on Aerial Imagery (B7)	<input type="checkbox"/> Gauge or Well Data (D9)	
<input type="checkbox"/> Sparsely Vegetated Concave Surface (B8)	<input type="checkbox"/> Other (Explain in Remarks)	

Field Observations:

Surface Water Present?	Yes _____ No <input checked="" type="checkbox"/>	Depth (inches): _____	Wetland Hydrology Present? Yes _____ No <input checked="" type="checkbox"/>
Water Table Present?	Yes _____ No <input checked="" type="checkbox"/>	Depth (inches): _____	
Saturation Present? (includes capillary fringe)	Yes _____ No <input checked="" type="checkbox"/>	Depth (inches): _____	

Describe Recorded Data (stream gauge, monitoring well, aerial photos, previous inspections), if available:

N/A

Remarks:

No primary or secondary indicators observed

Site: NISOURCE - NJCHP

Rater(s): REK

Date: 5/19/23

WOOL (PEM)

1	1
max 6 pts.	subtotal

Metric 1. Wetland Area (size).

Select one size class and assign score.

- ☐ >50 acres (>20.2ha) (6 pts)
☐ 25 to <50 acres (10.1 to <20.2ha) (5 pts)
☐ 10 to <25 acres (4 to <10.1ha) (4 pts)
☐ 3 to <10 acres (1.2 to <4ha) (3 pts)
☐ 0.3 to <3 acres (0.12 to <1.2ha) (2pts)
☒ 0.1 to <0.3 acres (0.04 to <0.12ha) (1 pt)
☐ <0.1 acres (0.04ha) (0 pts)

7	8
max 14 pts.	subtotal

Metric 2. Upland buffers and surrounding land use.

2a. Calculate average buffer width. Select only one and assign score. Do not double check.

- ☐ WIDE. Buffers average 50m (164ft) or more around wetland perimeter (7)
☒ MEDIUM. Buffers average 25m to <50m (82 to <164ft) around wetland perimeter (4)
☐ NARROW. Buffers average 10m to <25m (32ft to <82ft) around wetland perimeter (1)
☐ VERY NARROW. Buffers average <10m (<32ft) around wetland perimeter (0)

2b. Intensity of surrounding land use. Select one or double check and average.

- ☐ VERY LOW. 2nd growth or older forest, prairie, savannah, wildlife area, etc. (7)
☐ LOW. Old field (>10 years), shrub land, young second growth forest. (5)
☒ MODERATELY HIGH. Residential, fenced pasture, park, conservation tillage, new fallow field. (3)
☐ HIGH. Urban, industrial, open pasture, row cropping, mining, construction. (1)

7	6
max 30 pts.	subtotal

Metric 3. Hydrology.

3a. Sources of Water. Score all that apply.

- ☐ High pH groundwater (5)
☐ Other groundwater (3)
☒ Precipitation (1)
☐ Seasonal/intermittent surface water (3)
☐ Perennial surface water (lake or stream) (5)

3c. Maximum water depth. Select only one and assign score.

- ☐ >0.7 (27.6in) (3)
☐ 0.4 to 0.7m (15.7 to 27.6in) (2)
☒ <0.4m (<15.7in) (1)

3e. Modifications to natural hydrologic regime. Score one or double check and average.

- ☐ None or none apparent (12)
☐ Recovered (7)
☒ Recovering (3)
☐ Recent or no recovery (1)

Check all disturbances observed

- ☒ ditch
☐ tile
☐ dike
☐ weir
☐ stormwater input

3b. Connectivity. Score all that apply.

- ☐ 100 year floodplain (1)
☒ Between stream/lake and other human use (1)
☐ Part of wetland/upland (e.g. forest), complex (1)
☐ Part of riparian or upland corridor (1)

3d. Duration inundation/saturation. Score one or dbl check.

- ☐ Semi- to permanently inundated/saturated (4)
☐ Regularly inundated/saturated (3)
☐ Seasonally inundated (2)
☒ Seasonally saturated in upper 30cm (12in) (1)

9	24
max 20 pts.	subtotal

Metric 4. Habitat Alteration and Development.

4a. Substrate disturbance. Score one or double check and average.

- ☐ None or none apparent (4)
☐ Recovered (3)
☒ Recovering (2)
☐ Recent or no recovery (1)

4b. Habitat development. Select only one and assign score.

- ☐ Excellent (7)
☐ Very good (6)
☐ Good (5)
☒ Moderately good (4)
☐ Fair (3)
☐ Poor to fair (2)
☐ Poor (1)

4c. Habitat alteration. Score one or double check and average.

- ☐ None or none apparent (9)
☐ Recovered (6)
☒ Recovering (3)
☐ Recent or no recovery (1)

Check all disturbances observed

- ☐ mowing
☐ grazing
☐ clearcutting
☒ selective cutting
☒ woody debris removal
☐ toxic pollutants
☐ shrub/sapling removal
☐ herbaceous/aquatic bed removal
☐ sedimentation
☐ dredging
☐ farming
☐ nutrient enrichment

24
subtotal this page

last revised 1 February 2001 jjm

Site: N. SOURCE - NCHP	Rater(s): REK	Date: 5/19/23
------------------------	---------------	---------------

24

 subtotal first page

0

24

max 10 pts.
subtotal

Metric 5. Special Wetlands.

WOOD (PEM)

Check all that apply and score as indicated.

- ☐ Bog (10)
- ☐ Fen (10)
- ☐ Old growth forest (10)
- ☐ Mature forested wetland (5)
- ☐ Lake Erie coastal/tributary wetland-unrestricted hydrology (10)
- ☐ Lake Erie coastal/tributary wetland-restricted hydrology (5)
- ☐ Lake Plain Sand Prairies (Oak Openings) (10)
- ☐ Relict Wet Prairies (10)
- ☐ Known occurrence state/federal threatened or endangered species (10)
- ☐ Significant migratory songbird/water fowl habitat or usage (10)
- ☐ Category 1 Wetland. See Question 1 Qualitative Rating (-10)

7

31

max 20 pts.
subtotal

Metric 6. Plant communities, interspersions, microtopography.**6a. Wetland Vegetation Communities.**

Score all present using 0 to 3 scale.

- ☐ Aquatic bed
- ☒ Emergent
- ☐ Shrub
- ☐ Forest
- ☒ Mudflats
- ☒ Open water
- ☐ Other

6b. horizontal (plan view) Interspersion.

Select only one.

- ☐ High (5)
- ☐ Moderately high (4)
- ☒ Moderate (3)
- ☐ Moderately low (2)
- ☐ Low (1)
- ☐ None (0)

6c. Coverage of invasive plants. Refer to Table 1 ORAM long form for list. Add or deduct points for coverage

- ☐ Extensive >75% cover (-5)
- ☐ Moderate 25-75% cover (-3)
- ☒ Sparse 5-25% cover (-1)
- ☐ Nearly absent <5% cover (0)
- ☐ Absent (1)

6d. Microtopography.

Score all present using 0 to 3 scale.

- ☒ Vegetated hummocks/tussocks
- ☐ Coarse woody debris >15cm (6in)
- ☒ Standing dead >25cm (10in) dbh
- ☒ Amphibian breeding pools

Vegetation Community Cover Scale

0	Absent or comprises <0.1ha (0.2471 acres) contiguous area
1	Present and either comprises small part of wetland's vegetation and is of moderate quality, or comprises a significant part but is of low quality
2	Present and either comprises significant part of wetland's vegetation and is of moderate quality or comprises a small part and is of high quality
3	Present and comprises significant part, or more, of wetland's vegetation and is of high quality

Narrative Description of Vegetation Quality

low	Low spp diversity and/or predominance of nonnative or disturbance tolerant native species
mod	Native spp are dominant component of the vegetation, although nonnative and/or disturbance tolerant native spp can also be present, and species diversity moderate to moderately high, but generally w/o presence of rare threatened or endangered spp
high	A predominance of native species, with nonnative spp and/or disturbance tolerant native spp absent or virtually absent, and high spp diversity and often, but not always, the presence of rare, threatened, or endangered spp

Mudflat and Open Water Class Quality

0	Absent <0.1ha (0.247 acres)
1	Low 0.1 to <1ha (0.247 to 2.47 acres)
2	Moderate 1 to <4ha (2.47 to 9.88 acres)
3	High 4ha (9.88 acres) or more

Microtopography Cover Scale

0	Absent
1	Present very small amounts or if more common of marginal quality
2	Present in moderate amounts, but not of highest quality or in small amounts of highest quality
3	Present in moderate or greater amounts and of highest quality

31

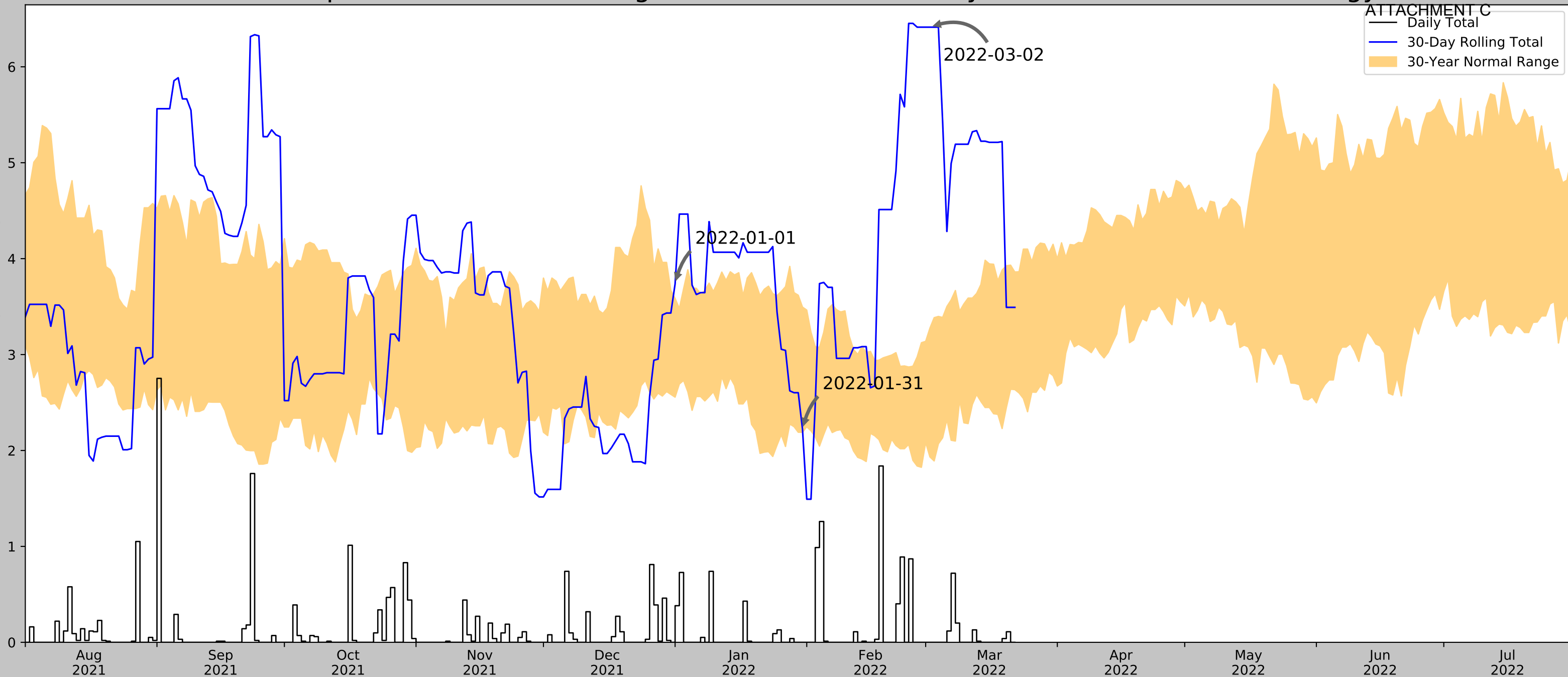
cat 1/2
gray
green**End of Quantitative Rating. Complete Categorization Worksheets.**



Appendix C | USACE Antecedent Precipitation Tool

Antecedent Precipitation vs Normal Range based on NOAA's Daily Global Historical Climatology Network

Rainfall (Inches)



Coordinates	40.011997, -82.572119
Observation Date	2022-03-02
Elevation (ft)	1094.88
Drought Index (PDSI)	Severe wetness (2022-02)
WebWIMP H ₂ O Balance	Wet Season

30 Days Ending	30 th %ile (in)	70 th %ile (in)	Observed (in)	Wetness Condition	Condition Value	Month Weight	Product
2022-03-02	1.933071	3.275197	6.413386	Wet	3	3	9
2022-01-31	2.189764	3.494882	2.220473	Normal	2	2	4
2022-01-01	2.555906	3.585433	3.736221	Wet	3	1	3
Result							Wetter than Normal - 16

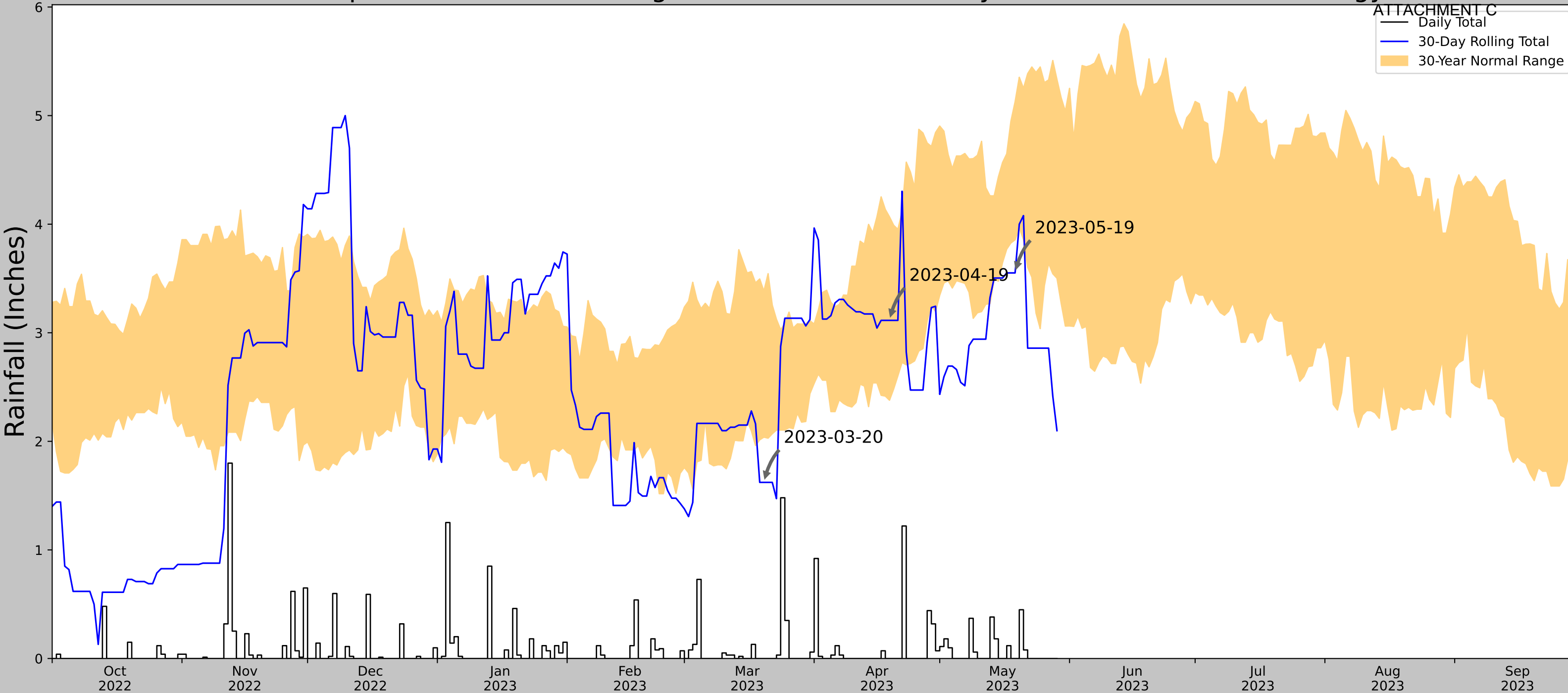
Weather Station Name	Coordinates	Elevation (ft)	Distance (mi)	Elevation Δ	Weighted Δ	Days (Normal)	Days (Antecedent)
BUCKEYE LAKE 1 N	39.9522, -82.4819	888.123	6.315	206.757	4.148	11082	90
KIRKERSVILLE 3.3 N	39.998, -82.5986	1075.131	1.703	19.749	0.8	8	0
PATASKALA 3.2 E	39.998, -82.6136	1074.147	2.399	20.733	1.129	7	0
GRANVILLE 2.6 WSW	40.0527, -82.5445	1064.961	3.169	29.919	1.521	10	0
PATASKALA 2.1 ENE	40.013, -82.6381	1171.916	3.492	77.036	1.841	1	0
PATASKALA 2.0 NE	40.024, -82.6511	1216.864	4.261	121.984	2.437	36	0
ALEXANDRIA 2.1 NNW	40.1182, -82.6265	1080.053	7.881	14.827	3.663	32	0
NEWARK HEATH AP	40.0228, -82.4625	883.858	5.848	211.022	3.866	3	0
UTICA 4 WSW	40.2061, -82.52	1134.843	13.691	39.963	6.708	1	0
NEWARK WTR WKS	40.0875, -82.4128	834.974	9.911	259.906	7.036	173	0



Figure and tables made by the
Antecedent Precipitation Tool
Version 1.0

Written by Jason Deters
U.S. Army Corps of Engineers

Antecedent Precipitation vs Normal Range based on NOAA's Daily Global Historical Climatology Network



Coordinates	40.021777, -82.950994
Observation Date	2023-05-19
Elevation (ft)	834.369
Drought Index (PDSI)	Mild wetness (2023-04)
WebWIMP H ₂ O Balance	Wet Season

30 Days Ending	30 th %ile (in)	70 th %ile (in)	Observed (in)	Wetness Condition	Condition Value	Month Weight	Product
2023-05-19	3.856299	5.127953	3.551181	Dry	1	3	3
2023-04-19	2.378347	4.067717	3.114173	Normal	2	2	4
2023-03-20	2.038583	3.383858	1.622047	Dry	1	1	1
Result							Drier than Normal - 8



Figure and tables made by the
Antecedent Precipitation Tool
Version 1.0

Written by Jason Deters
U.S. Army Corps of Engineers

Weather Station Name	Coordinates	Elevation (ft)	Distance (mi)	Elevation Δ	Weighted Δ	Days Normal	Days Antecedent
LAURELVILLE	39.4706, -82.7344	759.843	39.783	74.526	20.867	11080	90
LANCASTER 4.2 SSE	39.668, -82.5636	800.853	16.394	41.01	8.05	15	0
CIRCLEVILLE	39.6103, -82.9556	674.869	15.234	84.974	8.15	227	0
LANCASTER	39.7156, -82.6072	827.1	18.232	67.257	9.431	29	0
LANCASTER FAIRFIELD CO AP	39.7572, -82.6633	849.081	20.161	89.238	10.872	2	0



Engineering
& Design

Colliers Engineering & Design is a trusted provider of multi-discipline engineering, design and consulting services providing customized solutions for public and private clients through a network of offices nationwide.

For a full listing of our office locations, please visit colliersengineering.com

1 877 627 3772



*Civil/Site • Traffic/Transportation • Governmental • Survey/Geospatial
Infrastructure • Geotechnical/Environmental • Telecommunications • Utilities/Energy*