

OVERVIEW SHEET INDEX
SCALE: 1"=500'

NiSource

Ohio Utilities Protection Service
Call 811
before you dig

CAMPOS
EPC

401 N Front St, Suite 380, Columbus, OH 43215
(380) 799-8503

PROPOSED

REVISIONS

REV. #	DATE	DESCRIPTION
2	04/10/26	ISSUED FOR MATCH STATION PIPE
1	08/01/25	ISSUED FOR TIE-IN SHIFT
0	10/21/24	ISSUED FOR PERMIT

INTERNAL ENG.	JW	05/31/23	855-226-7671
DESIGNED BY	JEM	05/31/23	855-266-7671
CHECKED BY	JMJ	05/31/23	855-226-7671
AS-BUILT BY	TBD	TBD	TBD
	NAME	DATE	PHONE #

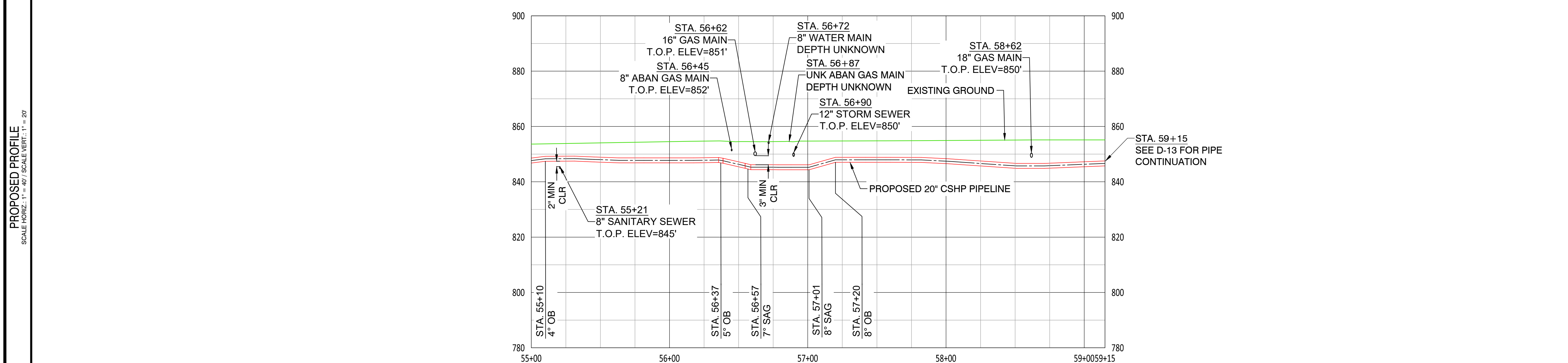
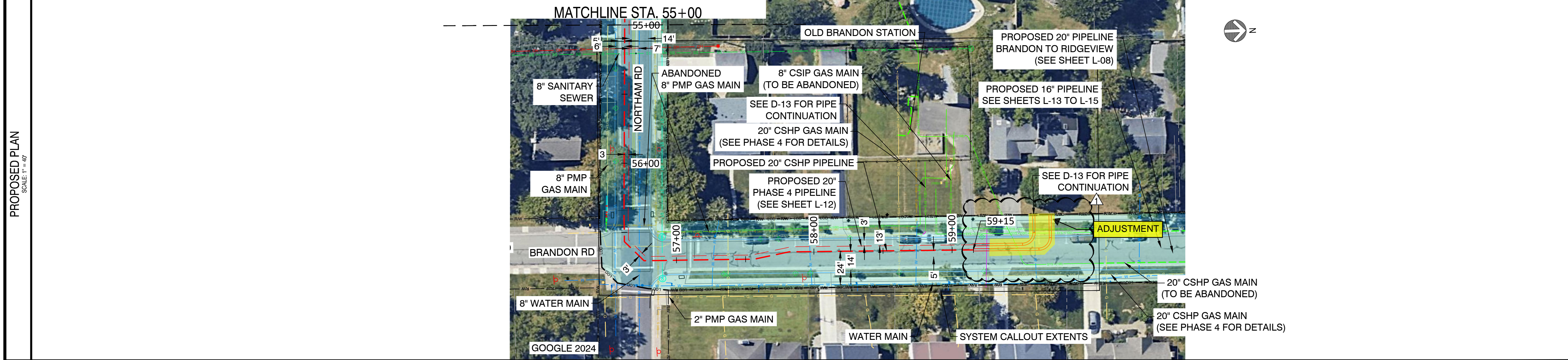
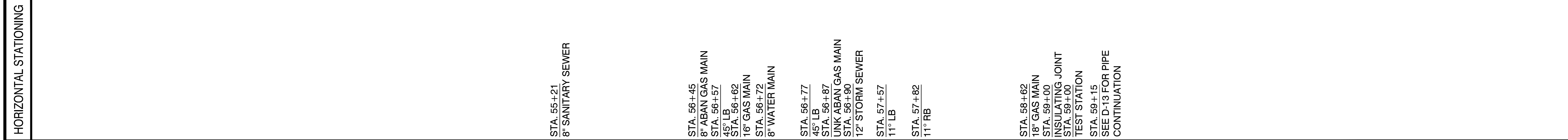
SITE NAME:
INST# 23-0136341-00
ABAN# 23-0136342-00
INST# 24-0136890-00
ABAN# 24-0136891-00
PROJECT ID# 21-78791
 NCHP PIPELINE REPLACEMENT, UNIVERSITY
 UPPER ARLINGTON/ COLUMBUS/ FRANKLIN COUNTY, OH

DRAWING TITLE:
 OVERVIEW SHEET

DRAWING NO:
O-2001

NOTE:
 1. AERIAL IMAGERY IS FOR REFERENCE ONLY

OWNERSHIP	CITY OF UPPER ARLINGTON			
JURISDICTION / PARCEL ID	CITY OF UPPER ARLINGTON / FRANKLIN COUNTY			
TEST PRESSURE / DESIGN INFO	1080 PSIG MIN / 1280 PSIG MAX / CLASS IV / 720 PSIG			
CONSTRUCTION METHOD	OPEN CUT / OC-06	OPEN CUT / OC-07	OPEN CUT / OC-08	OPEN CUT / OC-09
PIPE	④ ④ ① -415' ⑩ ⑫			
FITTINGS				



- NOTES:
- CONTRACTOR SHALL VERIFY ALL UTILITY CROSSINGS
 - SEE GENERAL NOTES FOR CLEARANCE REQUIREMENTS
 - SEE TD-01 TO TD-03 FOR OPEN CUT DETAILS
 - SERVICE LINE CROSSINGS SHOWN IN SURVEY ARE NOT STATIONED OR SHOWN IN PROFILE FOR CLARITY
 - THE PIPELINE HAS GENERALLY BEEN DESIGNED WITH A COVER OF 6'-0" TO ACCOUNT FOR THE DEPTH OF UNKNOWN SERVICE LINES. MINIMUM ALLOWABLE DEPTH OF COVER IS 4'-0"
 - VERTICAL BENDS CALLED OUT IN PROFILE ARE FOR REFERENCE. CONTRACTOR TO MAKE USE OF ROPING AND FIELD BENDS WHERE POSSIBLE
 - CORROSION PROTECTION IS DESIGNED BY NISOURCE AND IS NOT COVERED WITHIN THE ENGINEER'S STAMP
 - AERIAL IMAGERY IS FOR REFERENCE ONLY
 - FITTING EXTENTS SHOWN IN THE PROFILE ARE FOR REFERENCE ONLY. REFER TO STATIONING BAND FOR LOCATIONS OF ANTICIPATED FITTINGS. A 3X DIAMETER OF STRAIGHT PIPE IS REQUIRED BETWEEN ALL FITTINGS. REFER TO GS 2110.020 FOR FURTHER DETAILS.
 - SEE SHEETS TD-17 TO TD-29 FOR POT HOLE DETAILS.



PROPOSED

REVISIONS		
REV. #	DATE	DESCRIPTION
1	04/05/26	ADJUSTED TO MATCH STATION PIPE
0	11/25/25	ISSUED FOR CONSTRUCTION

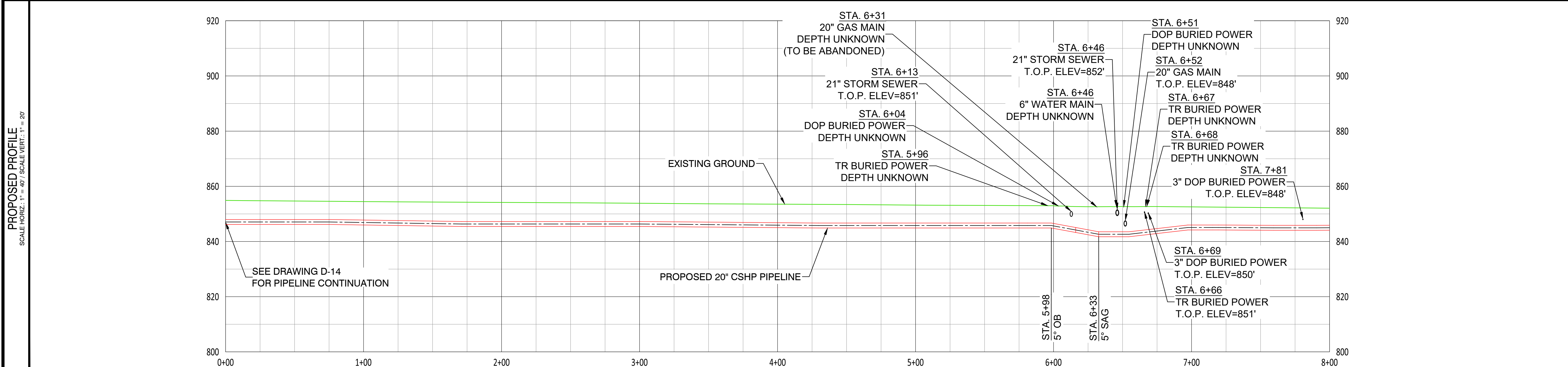
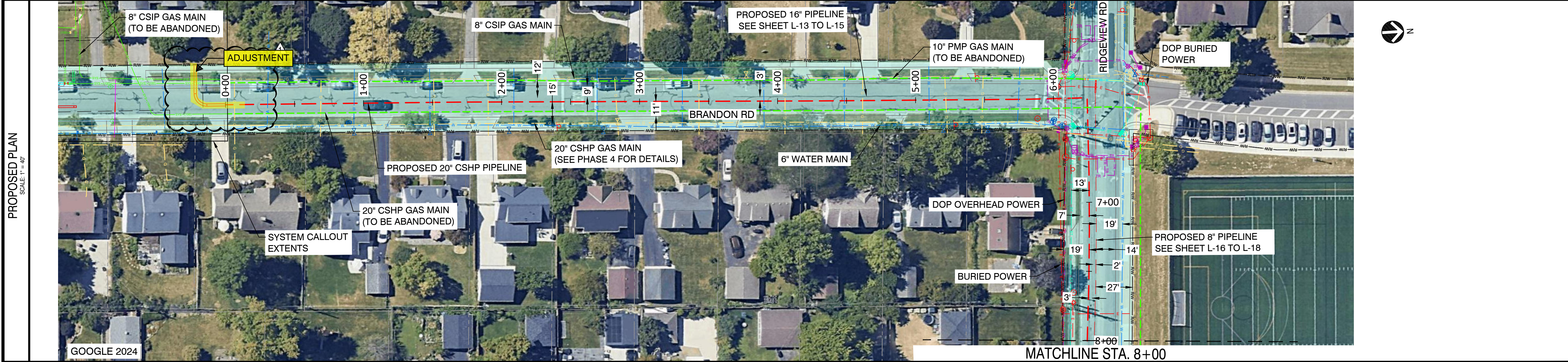
INTERNAL ENG.	AD	07/25/25	800-344-4077
DESIGNED BY	JEM	07/25/25	855-226-7671
CHECKED BY	JMJ	07/25/25	855-226-7671
AS-BUILT BY	TBD	TBD	TBD
	NAME	DATE	PHONE #

SITE NAME:
WO# 4000095908
MAT MAI
WBS L2 ANC34.0001.00029
 NCHP PIPELINE REPLACEMENT, PHASE 2B
 UPPER ARLINGTON, FRANKLIN COUNTY, OH

DRAWING TITLE:
20\"/>

DRAWING NO:
L-2007

OWNERSHIP	CITY OF UPPER ARLINGTON
JURISDICTION / PARCEL ID	CITY OF UPPER ARLINGTON / FRANKLIN COUNTY
TEST PRESSURE / DESIGN INFO	1080 PSIG MIN / 1280 PSIG MAX / CLASS IV / 720 PSIG
CONSTRUCTION METHOD	OPEN CUT / OC-12
PIPE	OPEN CUT / OC-13
FITTINGS	(1) 800' (6)



- NOTES:
- CONTRACTOR SHALL VERIFY ALL UTILITY CROSSINGS
 - SEE GENERAL NOTES FOR CLEARANCE REQUIREMENTS
 - SEE TD-01 TO TD-03 FOR OPEN CUT DETAILS
 - SERVICE LINE CROSSINGS SHOWN IN SURVEY ARE NOT STATIONED OR SHOWN IN PROFILE FOR CLARITY
 - THE PIPELINE HAS GENERALLY BEEN DESIGNED WITH A COVER OF 6'-0" TO ACCOUNT FOR THE DEPTH OF UNKNOWN SERVICE LINES. MINIMUM ALLOWABLE DEPTH OF COVER IS 4'-0"
 - VERTICAL BENDS CALLED OUT IN PROFILE ARE FOR REFERENCE. CONTRACTOR TO MAKE USE OF ROPING AND FIELD BENDS WHERE POSSIBLE. REFER TO GS 3010.030 FOR FURTHER DETAILS
 - CORROSION PROTECTION IS DESIGNED BY NISOURCE AND IS NOT COVERED WITHIN THE ENGINEER'S STAMP
 - AERIAL IMAGERY IS FOR REFERENCE ONLY
 - FITTING EXTENTS SHOWN IN THE PROFILE ARE FOR REFERENCE ONLY. REFER TO STATIONING BAND FOR LOCATIONS OF ANTICIPATED FITTINGS. A 3X DIAMETER OF STRAIGHT PIPE IS REQUIRED BETWEEN ALL FITTINGS. REFER TO GS 2110.020 FOR FURTHER DETAILS
 - SEE SHEETS TD-17 TO TD-29 FOR POT HOLE DETAILS.



PROPOSED

REVISIONS			
REV. #	DATE	DESCRIPTION	
1	04/05/26	ADJUSTED TO MATCH STATION PIPE	
0	11/25/25	ISSUED FOR CONSTRUCTION	

INTERNAL ENG.	AD	07/25/25	800-344-4077
DESIGNED BY	JEM	07/25/25	855-226-7671
CHECKED BY	JMJ	07/25/25	855-226-7671
AS-BUILT BY	TBD	TBD	TBD
	NAME	DATE	PHONE #

SITE NAME:
WO# 4000095908
MAT MAI
WBS L2 ANC34.0001.00029
 NCHP PIPELINE REPLACEMENT, PHASE 2B
 UPPER ARLINGTON, FRANKLIN COUNTY, OH

DRAWING TITLE:
20" BRANDON TO RIDGEVIEW ALIGNMENT
STA. 0+00 TO STA. 8+00

DRAWING NO:
L-2008