

OVERVIEW SHEET INDEX  
SCALE: 1"=1000'

**NiSource**

Ohio Utilities Protection Service  
**Call 811**  
before you dig

**CAMPOS**  
EPC  
401 N Front St, Suite 380, Columbus, OH 43215  
(380) 799-8503

**PROPOSED**

REVISIONS			
REV. #	DATE	DESCRIPTION	
D	05/08/25	REVISED FOR 2027 CONSTRUCTION	
C	06/18/25	REVISED FOR TEMP. TIE-IN	
B	05/05/25	REVISED FOR CONSTRUCTION NOTICE	
A	12/23/24	ISSUED FOR PERMIT	
INTERNAL ENG.	AD	12/23/24	614-981-0661
DESIGNED BY	JMJ	12/23/24	855-266-7671
CHECKED BY	RBW	12/23/24	855-266-7671
AS-BUILT BY	TBD	TBD	TBD
	NAME	DATE	PHONE #

SITE NAME:  
**INST# 23-0083895-00**  
**ABAN# 23-0083897-00**  
**PROJECT ID# 21-78793**  
AGLER ROAD NCHP PIPELINE PROJECT  
COLUMBUS/GAHANNA, FRANKLIN COUNTY, OH

DRAWING TITLE:  
**OVERVIEW WORKSPACE**

DRAWING NO:  
**AG-01**



**WORK ORDER NUMBER: 4000097527**

**WORK ORDER MAINTENANCE ACTIVITY TYPE (MAT) : MAI**

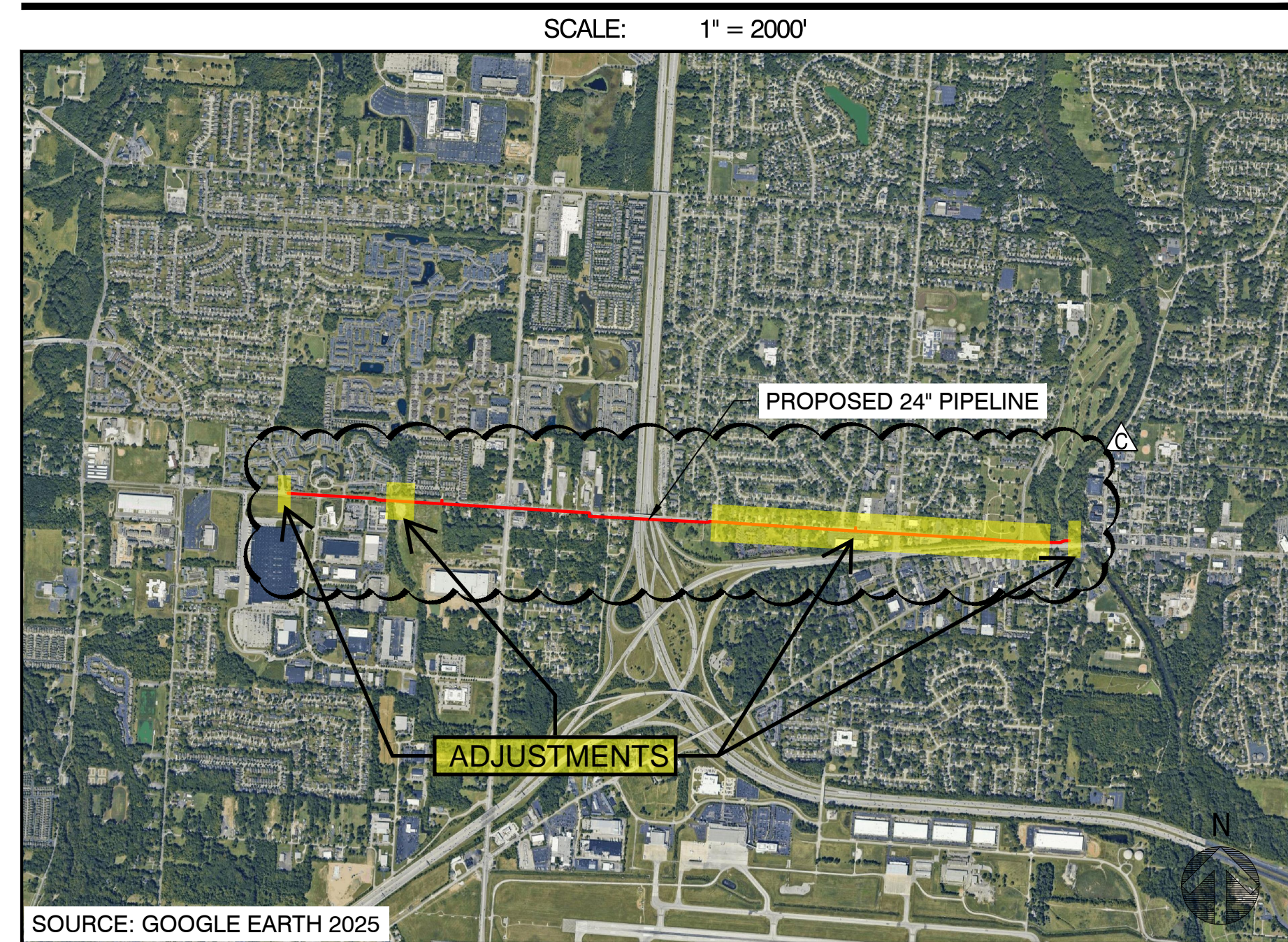
**WBS LEVEL 2 NUMBER: ANC34.0001.00035**

**PROJECT INFORMATION**

FIELD ENGINEER/TECHNICIAN	KAITLIN DYGERT
CONSTRUCTION FLL:	TONY CADWELL
PERMITS	CITY OF COLUMBUS PERMIT CITY OF GAHANNA PERMIT FRANKLIN COUNTY PERMIT ENVIRONMENTAL PERMITS DOT PERMITS OPSB PERMIT
TCC/LOA	0823/COLUMBUS NORTHEAST
COUNTY	FRANKLIN COUNTY, OH
TASK DISTRICT/TOWNSHIP ID	0250150 0250530 0250040 0250010 0250520
MAP/GRID NUMBER	7336428A 7336428B 7336428C 7336428D 7332428A 7332428B
24 HR. EMERGENCY LINE	1-800-344-4077

**AGLER ROAD NCHP PIPELINE PROJECT**

**VICINITY MAP**



**PROJECT DESCRIPTION**

INSTALLATION OF 2.2 MILES OF 24-INCH HIGH PRESSURE STEEL PIPELINE



REVISIONS			
REV. #	DATE	DESCRIPTION	
C	05/08/26	ISSUED FOR 2027 CONSTRUCTION	
B	06/18/25	REVISED FOR FUTURE TIE-IN	
A	12/23/24	ISSUED FOR PERMIT	
INTERNAL ENG.	AD	10/08/25	800-344-4077
DESIGNED BY	JEM	10/08/25	855-226-7671
CHECKED BY	JC	10/08/25	855-226-7671
AS-BUILT BY	TBD	TBD	TBD
	NAME	DATE	PHONE #

SITE NAME:  
**WO# 4000097527**  
**MAT MAI**  
**WBS L2 ANC34.0001.00035**  
 AGLER ROAD NCHP PIPELINE PROJECT  
 COLUMBUS/GAHANNA, FRANKLIN COUNTY, OH

DRAWING TITLE:  
 TITLE SHEET

DRAWING NO:  
**T-2001**



**PROPOSED**

SHEET INDEX		
DWG.	DESCRIPTION	REV
<b>GENERAL</b>		
T-2001	TITLE SHEET	C
T-2002	INDEX SHEET	C
GN-2001	NISOURCE GENERAL NOTES	B
GN-2002	GENERAL NOTES AND LEGEND	B
<b>ALIGNMENT SHEETS</b>		
O-2001	OVERVIEW SHEET	C
L-2001	24" WEST LINDEN ALIGNMENTS STA 0+00 TO STA 1+12	A
L-2002	STATION 0+00 TO STA 10+00	B
L-2003	STATION 10+00 TO STA 20+00	B
L-2004	STATION 20+00 TO STA 30+00	B
L-2005	STATION 30+00 TO STA 40+00	B
L-2006	STATION 40+00 TO STA 50+00	B
L-2007	STATION 50+00 TO STA 60+00	B
L-2008	STATION 60+00 TO STA 70+00	A
L-2009	24" CITYGATE TO US-62 ALIGNMENT STA 0+00 TO STA 10+00	C
L-2010	24" CITYGATE TO US-62 ALIGNMENT STA 10+00 TO STA 20+00	B
L-2011	24" CITYGATE TO US-62 ALIGNMENT STA 20+00 TO STA 30+00	B
L-2012	24" CITYGATE TO US-62 ALIGNMENT STA 30+00 TO STA 40+00	B
L-2013	24" CITYGATE TO US-62 ALIGNMENT STA 40+00 TO STA 50+00	B
L-2014	24" CITYGATE TO US-62 ALIGNMENT STA 50+00 TO STA 60+00	B
L-2015	24" CITYGATE TO US-62 ALIGNMENT STA 60+00 TO STA 70+00	B
L-2016	24" CITYGATE TO US-62 ALIGNMENT STA 70+00 TO STA 80+00	B
L-2017	24" CITYGATE TO US-62 ALIGNMENT STA 80+00 TO STA 90+00	B
L-2018	24" CITYGATE TO US-62 ALIGNMENT STA 90+00 TO STA 100+00	B
L-2019	24" CITYGATE TO US-62 ALIGNMENT STA 100+00 TO STA 110+00	B
L-2020	24" CITYGATE TO US-62 ALIGNMENT STA 110+00 TO STA 117+36	B
L-2021	STA 190+00 TO STA 198+02	A

REVISIONS		
REV. #	DATE	DESCRIPTION
C	05/08/26	ISSUED FOR 2027 CONSTRUCTION
B	06/18/25	REVISED FOR FUTURE TIE-IN
A	12/23/24	ISSUED FOR PERMIT

INTERNAL ENG.	AD	10/08/25	800-344-4077
DESIGNED BY	JEM	10/08/25	855-226-7671
CHECKED BY	JC	10/08/25	855-226-7671
AS-BUILT BY	TBD	TBD	TBD
	NAME	DATE	PHONE #

SITE NAME:  
**WO# 4000097527**  
**MAT MAI**  
**WBS L2 ANC34.0001.00035**  
 AGLER ROAD NCHP PIPELINE PROJECT  
 COLUMBUS/GAHANNA, FRANKLIN COUNTY, OH

DRAWING TITLE:  
 INDEX SHEET

DRAWING NO:  
**T-2002**

**General Notes**

- Deviation from NiSource CAD Standards is at discretion of reviewing Professional Engineer.
- Refer to project documentation for the associated Environmental Compliance Plan (ECP) and any project-specific documentation.
- The proposed gas facility locations shown are approximate and are subject to change.
- Property lines, structures, street lines, etc. were compiled using the NiSource GIS and are to be considered approximate and not to scale.
- Existing utilities, where shown, have been compiled from above ground evidence only and are to be considered approximate. NiSource does not guarantee the location of the underground utilities shown or that all existing utilities and/or subsurface structures are shown.
- Individual service line designs for services smaller than 3 inches in diameter are not provided by Engineering. These services shall be installed using the standard design criteria and material specified in the NiSource standards. Services 3 inches and larger in diameter shall be designed, reviewed, and represented on a separate plan set as necessary.
- This project will adhere to all applicable federal, state or local permitting requirements for abandonment and installation of natural gas pipelines. All Federal, State, and Local codes and standards will be adhered including, but not limited to, the following:  
**Code of Federal Regulations (CFR)**  
 49 CFR 192 Pipeline Safety Regulations  
 29 CFR 1910 Occupational Safety and Health Administration (OSHA)  
**American Society of Mechanical Engineers (ASME)**  
 ASME B31.8 Gas Transmission and Distribution Piping Systems
- All NiSource design codes and standards will be adhered to as applicable.
- Prior to beginning any excavation on site, the person responsible for earth moving shall notify utility owners of their intent to excavate and to have the exact locations of the utility lines marked by contacting the one call center in their state subject to any applicable state advance notification requirements.
- Proposed or completed gas facility installation location references may be indicated by a combination of the following codes:

F - FRONT	CLP - CENTER OF PAVEMENT	D - DRIVEWAY EDGE
BK - BACK	CLR - CENTER OF RIGHT-OF-WAY	EP - EDGE OF PAVEMENT
L - LEFT	CEL - CENTER OF EASTBOUND LANE	ES - EDGE OF SIDEWALK
R - RIGHT	CWL - CENTER OF WESTBOUND LANE	PL - PROPERTY LINE
B - BUILDING EDGE	CNL - CENTER OF NORTHBOUND LANE	
CU - CURB	CSL - CENTER OF SOUTHBOUND LANE	

**Drawing Revision Conditions:**

- If, during the course of project construction, anticipated changes to project plans result in complex project criteria being met as defined by NiSource Gas Standard 2810.050 "Stakeholder Reviews of Design Capital Projects," the changes shall not be implemented until revised project documentation is reviewed by the Project Engineer and approved by a Professional Engineer as necessary.
- Any additional gas pressure containing material not listed on the project Bill of Materials must be reviewed by the Project Engineer and reviewing Professional Engineer prior to use.
- Any significant changes to proposed primary pipeline installation methods and location must be reviewed by the Project Engineer and reviewing Professional Engineer.
- Any significant changes to proposed project scope must be reviewed by the Project Engineer and reviewing Professional Engineer. Significant changes to project scope may include changes to proposed design pressure, change of proposed pipe size and material affecting system hydraulics, and the addition or removal of significant amounts of pipeline installation or abandonment.
- Any significant changes to proposed tie-ins must be reviewed by the Project Engineer and reviewing Professional Engineer. Significant changes may include the following: addition or removal of a tie-in, change in proposed tie-in material, change in proposed tie-in method, and change in tie-in location if system hydraulics may be affected.

**Project Specific Design Change Request Conditions:**

- This is a relocation project and must be installed in accordance with proposed installation locations. If, during the course of installation, it is found that the installation must deviate from any planned horizontal and vertical installation locations, construction must cease until the deviation is reviewed by the Project Engineer and reviewing Professional Engineer.
- This project involves the installation of facilities within private rights-of-way as indicated by the proposed installation drawing. If, during the course of installation, it is found that the installation must deviate from the planned location within the private right-of-way, construction must cease until the deviation is reviewed by the Project Engineer and reviewing Professional Engineer.
- This project involves the installation of facilities in permitted locations within public right-of-way. If, during the course of installation, it is found that the installation must deviate from the permitted location, construction must cease until the deviation is reviewed by the Project Engineer and reviewing Professional Engineer.

**Environmental Notes**

- All NiSource construction activities must be completed in accordance with the Environmental Construction Standards (HSE 4440.020) and the project Environmental Compliance Plan (ECP). Said ECP shall be provided by others.
- The project ECP and any site-specific erosion control drawings, must be provided to the contractor with the project drawings for review and planning prior to the start of construction activities. This includes any tree clearing activities required prior to the start of facility construction activities.
- The project ECP and any associated drawings must be reviewed with construction, the contractor, and an environmental representative prior to the start of construction activities.
- These documents must remain on site for the duration of the construction project, and any project scope changes, with the potential to impact the requirements of the ECP or environmental drawings, must be coordinated with an environmental representative prior to completion.

**Subsurface Utility Notes:**

- SUE documentation, utility drawings, and utility reports do not replace physical field locates or negate the need to call 811.
- Existing utilities and services, if shown, have been compiled by third party SUE professionals. NiSource and/or the Professional Engineer in charge of project design defers SUE responsibility to these providers noted on the utilities drawing/report. SUE collection and depiction shall follow ASCE 38-22.
- Service lines shown are QL-C or QL-D unless otherwise noted. Existing services shown on this plan with surveyed surface features at both ends (anchor points) may be considered QL-C. All other services shall be considered QL-D. If utility owner information was not provided, then those quality levels are not depicted. Lack of quality level does not correlate to an absence of service. To avoid accidental service line damage, these shall be located prior to excavation, either based on utility owner markings (811) or by other geophysical methods.
- One-Call markings or other geophysical methods shall be used in further field investigation prior to excavation.
- If a discrepancy is present between the utility owner field markings and a QL-A or QL-B designation on the plans, Stop Work Authority shall be utilized until the discrepancy is resolved.

**DRAWING LEGEND**

**Gas Main Symbolology**

	Existing Gas Main
	Existing Gas Main to Be Abandoned
	Proposed Gas Main
	Proposed Gas Main Upgrade

**Gas Main Material/Pressure Label References**

**MATERIAL CODES**

CS*	Coated Steel Gas Main
WT*	Weld Treated Gas Main
CI*	Cast Iron Gas Main
BS*	Bare Steel Gas Main
WI*	Wrought Iron Gas Main
PH*	High Density Polyethylene Gas Main
PM*	Medium Density Polyethylene Gas Main

**PRESSURE CODES**

*LP	Low Pressure
*IP	Intermediate Pressure
*MP	Medium Pressure
*HP	High Pressure

**MISCELLANEOUS CODES**

*-SER	Service
*-R	Riser
(TC)	Transmission Class

**Gas Main Installation Method Label References**

AT	Attached
BH	Bridge Hanger
BLGH	Building Hanger
DB	Directional Bore
IS	Inserted
OC	Open Cut
PB	Pneumatic Bore
PL	Plowed
RT	Roof Top
(E)	Existing
(P)	Proposed

**Gas Facility Symbolology**

	x"GV	Gas Valve
	x"Pv	Critical Gas Valve
		(Gate - GV, Plug - PV, PE Ball - BP, ST Ball - BV)
	x"HVTT	High Volume Tapping Tee
	x"SST	Pressure Control Fitting - ShortStopp Tee
	x"SPH	Pressure Control Fitting - Spherical Tee
	x"MF-BO	Pressure Control Fitting - Mueller Bottom-out
	x"MF-SO	Pressure Control Fitting - Mueller Side-out
	x"MF-FT	Pressure Control Fitting - Mueller Flange Tee
	x"SS	Pressure Control Fitting - ShortStopp
	x"MF	Pressure Control Fitting - Mueller Stopper
	x"x" POLYTAP	Polytapp Side Saddle Fitting

	Transition
	End Cap
	Riser
	Reducer
	Electronic Marker
	Flush-mounted Tracer Wire Station
	Post Pipeline Marker with Tracer Wire
	Gas Main Marker without Tracer Wire
	Test Well
	Regulator Station
	Single Customer Regulator
	Meter
	Meter with Regulator
	Test Point (Station)
	Gas Service Tie-over
	Gas Service Replacement
	Meter Move Out

**MMO**

**Swing Tie Symbolology**

	Telephone Manhole
	Drain Manhole
	Electric Manhole
	Catch Basis
	Sewer Manhole
	Fire Hydrant
	Utility Pole
	Property Marker
	Telephone Pedestal
	Television Pedestal
	Unknown Manhole
	Water Box
	Water Gate
	Electric Pedestal
	Iron Pin
	Light Pole

	W1	Weld Location
	T1	Gas Main Tie-in Location
	A1	Gas Main Abandonment Location



**REVISIONS**

REV. #	DATE	DESCRIPTION
B	05/08/26	ISSUED FOR 2027 CONSTRUCTION
A	12/23/24	ISSUED FOR PERMIT

INTERNAL ENG.	AD	10/08/25	800-344-4077
DESIGNED BY	JEM	10/08/25	855-226-7671
CHECKED BY	JC	10/08/25	855-226-7671
AS-BUILT BY	TBD	TBD	TBD

NAME	DATE	PHONE #

**SITE NAME:**

**WO# 400097527**  
**MAT MAI**  
**WBS L2 ANC34.0001.00035**

AGLER ROAD NCHP PIPELINE PROJECT  
 COLUMBUS/GAHANNA, FRANKLIN COUNTY, OH

**DRAWING TITLE:**

NISOURCE  
 GENERAL NOTES

**DRAWING NO.:**

**GN-2001**

**GENERAL NOTES**

1. THE CONTRACTOR SHALL COMPLY WITH ALL CITY, COUNTY, STATE, AND FEDERAL GUIDELINES/REGULATIONS APPLICABLE TO CONSTRUCTION OF THIS SITE.
2. SITE CONTRACTOR SHALL VERIFY ALL COORDINATES AND DIMENSIONAL INFORMATION PRIOR TO CONSTRUCTION. BRING ANY DISCREPANCIES WITH LAYOUT TO ATTENTION OF OWNER PRIOR TO STARTING CONSTRUCTION.
3. UNLESS SPECIFICALLY SHOWN OTHERWISE ON THE DRAWINGS, CONTRACTOR SHALL MAINTAIN A MINIMUM 5'-0" OFFSET FROM PROPERTY LINES AND FROM EDGE OF PAVEMENT (EXCLUDING ROAD AND PROPERTY LINE CROSSINGS). ALL CONSTRUCTION METHODS AND MATERIALS SHALL CONFORM TO THE CURRENT SPECIFICATIONS AND STANDARDS OF OWNER.
4. ALL WORK SHALL BE IN COMPLIANCE WITH OSHA, TITLE 29 OF THE CODE OF FEDERAL REGULATIONS, AND ALL OTHER FEDERAL, STATE AND LOCAL LAWS AND REGULATIONS.
5. CONTRACTOR SHALL PERFORM A SITE VISIT AND VERIFY ALL COORDINATES AND DIMENSIONAL INFORMATION PRIOR TO CONSTRUCTION. IF DISCREPANCIES ARE OBSERVED, THE ENGINEER SHALL BE NOTIFIED.
6. CONTRACTOR IS RESPONSIBLE FOR KNOWING LOCATION OF ALL ENVIRONMENTALLY SENSITIVE AREA RESTRICTIONS PERTAINING TO THIS PROJECT.
7. CONTRACTOR TO VERIFY WETLANDS HAVE BEEN PERMITTED AND MITIGATED PRIOR TO DISTURBING ANY WETLAND AREAS.
8. CONTRACTOR SHALL REMAIN WITHIN THE CONSTRUCTION WORKING LIMITS. ACCESS TO AREAS OUTSIDE WORKING LIMITS MUST BE COORDINATED WITH THE OWNER OR OBTAINED DIRECTLY BY CONTRACTOR.
9. CONTRACTOR SHALL USE ALL NECESSARY MEANS TO ENSURE SAFE AND PROPER TRAFFIC FLOW DURING CONSTRUCTION, IN ACCORDANCE WITH OWNER AND LOCAL DOT STANDARDS.
10. CONTRACTOR IS SOLELY RESPONSIBLE FOR EXECUTION OF THEIR WORK IN ACCORDANCE WITH THE CONTRACT DOCUMENTS AND SPECIFICATIONS. CONTRACTOR IS RESPONSIBLE FOR THE CONSTRUCTION METHODS AND TECHNIQUES, SEQUENCES, TIME OF PERFORMANCE, AND ALL SAFETY PRECAUTIONS.
11. CONTRACTOR TO LESSEN THE LIMITS OF DISTURBANCE AS MUCH AS PRACTICAL DURING CONSTRUCTION TO MINIMIZE AMOUNT OF RE-PAVING NECESSARY.
12. THE PIPELINE HAS GENERALLY BEEN DESIGNED WITH A MINIMUM COVER OF 6'-0" TO ACCOUNT FOR DEPTH OF UNKNOWN SERVICE LINES.
13. MINIMUM ALLOWABLE DEPTH OF COVER IS 4'-0".
14. BENDS UNDER 4° ARE NOT SHOWN.
15. PIPE FIELD BENDS ARE LIMITED TO 20° UNLESS APPROVED BY ENGINEERING.

**DESIGN BASIS**

1. EXISTING CONDITIONS WERE TAKEN FROM:
  - A TOPOGRAPHIC SURVEY PERFORMED BY CAMPOS EPC
  - AN ENVIRONMENTAL SURVEY PERFORMED BY COLLIERIS
2. GEOTECHNICAL ENGINEERING REPORTS PREPARED BY DLZ APPROXIMATE BOREHOLE LOCATIONS HAVE BEEN SHOWN ON THE PLANS.
3. GEOTECHNICAL DATA IS PROVIDED FOR CONTRACTOR REFERENCE. CONTRACTOR SHALL INTERPRET THE GEOTECHNICAL DATA BETWEEN EXPLORATION POINTS. CONTRACTOR SHALL OBTAIN ADDITIONAL DATA DEEMED NECESSARY FOR BID PREPARATION OR CONSTRUCTION AT THE CONTRACTOR'S EXPENSE.
4. ALL DIMENSIONS ARE TAKEN FROM/TO EDGE OF PAVEMENT, CENTERLINE OF UTILITY OR EDGE OF EASEMENT UNLESS OTHERWISE NOTED.
5. PROPOSED PIPE LOCATIONS SHOWN ARE AS FIELD IDENTIFIED BY OWNER AND ARE BASED ON EVALUATION OF ABOVE GROUND FEATURES. THE FINAL ALIGNMENT AND LOCATION OF PIPE SHALL BE DETERMINED BY OWNER AND ITS DESIGNATED INSPECTOR(S).
6. STATIONING IS IN FEET BY HORIZONTAL MEASUREMENT AND REFERS TO CENTERLINE OF PROPOSED BORE PATH.
7. DRILL PATH ELEVATIONS REFER TO THE CENTERLINE OF THE PILOT HOLE AND NOT TO THE TOP OF INSTALLED PIPE.
8. DRILL PATH ENTRY AND EXIT LABELS ARE FOR REFERENCE ONLY AND DO NOT SPECIFY WHICH SIDE OF THE BORE PATH A RIG WILL BE SET UP ON. CONTRACTOR MAY ELECT TO DRILL FROM EITHER OR BOTH SIDES BASED ON THEIR MEANS AND METHODS.

**SCOPE**

1. CONTRACTOR SHALL INSTALL THE PIPE STRING USING THE CONSTRUCTION METHODS SET FORTH IN THE DRAWINGS. ANY DEVIATIONS MUST BE COORDINATED WITH NISOURCE AND THE CITY OF COLUMBUS.
2. CONTRACTOR SHALL PROVIDE AND MOBILIZE ALL NECESSARY EQUIPMENT, INSTRUMENTATION, AND SUPPLIES TO INSTALL THE WELDED PIPE STRING USING HDD METHOD OF CONSTRUCTION.
3. CONTRACTOR SHALL ACTIVELY MONITOR THE DRILLED ALIGNMENT FOR IMPACTS THAT COULD OCCUR AS A RESULT OF HDD OPERATIONS (IE. SETTLEMENT, HEAVE, AND DRILLING FLUID FLOW). CONTRACTOR'S MONITORING PROCEDURES AND ASSOCIATED EMERGENCY RESPONSE PLANS SHALL BE APPROPRIATE TO ENSURE THAT PUBLIC SAFETY IS NOT COMPROMISED.

**EXISTING UTILITIES**

1. THE CONTRACTOR SHALL NOTIFY THE PUBLIC UTILITY LOCATING SYSTEM (811) AND OBTAIN A CLEARED, APPROVED TICKET PRIOR TO BEGINNING WORK.
2. LOCATIONS OF EXISTING UNDERGROUND UTILITIES AND SITE FEATURES ARE APPROXIMATE. ACTUAL EXISTING CONDITIONS MAY VARY FROM WHAT IS REPRESENTED IN THESE DRAWINGS AND SHALL BE VERIFIED IN THE FIELD BY CONSTRUCTION PERSONNEL PRIOR TO BEGINNING WORK.

3. THE CONTRACTOR IS RESPONSIBLE FOR LOCATING AND POSITIVELY IDENTIFYING THE UTILITIES WITHIN THE WORKSPACE. CONTRACTOR IS RESPONSIBLE FOR LOCATING AND PROTECTING ALL UNDERGROUND UTILITIES WITHIN THE CONSTRUCTION AREA. CONTRACTOR IS RESPONSIBLE FOR ALL LOSSES AND REPAIRS OCCASIONED BY DAMAGE TO UNDERGROUND FACILITIES / UTILITIES RESULTING FROM THEIR WORK.
4. IF EXISTING UTILITIES ARE IDENTIFIED IN THE FIELD AND DEEMED TO BE IN CONFLICT WITH THE PROPOSED BORE PROFILE, CONTRACTOR SHALL NOTIFY THE ENGINEER IMMEDIATELY SO THE CONFLICT MAY BE RESOLVED.
5. THE PIPELINE SHALL BE INSTALLED SO AS TO PROVIDE A MINIMUM OF TWENTY FOUR (24) INCHES OF CLEARANCE TO ALL OTHER UNDERGROUND UTILITIES AND STRUCTURES. WHERE THIS IS NOT POSSIBLE, APPROPRIATE PROTECTION SHALL BE INSTALLED, WITH THE APPROVAL OF NISOURCE REPRESENTATIVE OR INSPECTOR.
6. WHERE NOTED ON PLANS, REFER INV-XXX TO POTHOLE EXHIBITS FOR TYPE, DEPTH, SIZE, ETC.
7. CONTRACTOR TO CONTACT POWER COMPANIES WHEN POWER POLES ARE WITHIN 5' OF A TRENCH OR PIT.

**CONTRACTOR NOTES**

CONTRACTOR SHALL BE RESPONSIBLE FOR THE FOLLOWING NOTIFICATIONS:

1. UTILITY NOTIFICATION CENTER OF OHIO (OHIO811), 1-800-362-2764. CALL TWO (2) BUSINESS DAYS PRIOR (NOT INCLUDING THE DAY OF THE CALL). OHIO811 ADVISES THE CONTRACTOR/EXCAVATOR TO SUBMIT THEIR DIG NOTIFICATION REQUEST TO OHIO811, RECEIVE THEIR REFERENCE NUMBER AND WAIT THE REQUIRED 48 HOURS (EXCLUDING WEEKENDS AND LEGAL HOLIDAYS) BEFORE EXCAVATION TO BE COMPLIANT WITH OHIO LAW.
  - a. LOCATION OF EXISTING UTILITIES SHALL BE VERIFIED BY CONTRACTOR PRIOR TO CONSTRUCTION. CONTRACTOR SHALL BE RESPONSIBLE FOR LOCATION, SUPPORT, PROTECTION AND RESTORATION OF ALL EXISTING UTILITIES AND APPURTENANCES, WHETHER SHOWN OR NOT SHOWN ON THE APPROVED CONSTRUCTION DOCUMENTS.
  - b. PROVIDING NOTIFICATION AND RECEIVING MARKINGS OF UNDERGROUND MEMBER UTILITIES IN NO WAY CONSTITUTES PERMISSION TO PERFORM CONSTRUCTION.
2. LOCATION OF EXISTING UTILITIES SHALL BE VERIFIED BY THE CONTRACTOR PRIOR TO CONSTRUCTION. THE CLIENT'S UTILITY CUSTOMERS SHALL BE NOTIFIED OF POTENTIAL SERVICE OUTAGES. CONSTRUCTION WILL COORDINATE WITH THE CLIENT FOR DETERMINATION OF MINIMUM TIME REQUIREMENT. CLIENT SHALL BE NOTIFIED TWO BUSINESS DAYS (48 HOURS) IN ADVANCE TO SCHEDULE AN OUTAGE. THE CLIENT MUST BE NOTIFIED 24 HOURS IN ADVANCE FOR OBSERVATIONS OF WORK IN PROGRESS. OBSERVATION AND ONSITE VISITS ARE NOT TO BE CONSTRUED AS A GUARANTEE OR APPROVAL BY CLIENT STAFF OF CONTRACTOR'S WORK OR CONTRACTUAL COMMITMENT. IF WORK IS SUSPENDED FOR LONGER THAN 5 DAYS AFTER INITIAL START-UP, CONTRACTOR SHALL NOTIFY THE CLIENT CONSTRUCTION INSPECTION SUPERVISOR ONE (1) BUSINESS DAYS (24 HOURS) PRIOR TO RESTART OF CONSTRUCTION.
3. CONTRACTOR TO PROVIDE SHORING PER REQUIREMENTS OF CITY OF COLUMBUS PERMIT PACKAGE. ALTERNATIVE RECOMMENDATIONS ARE PERMITTED, BUT WILL REQUIRE APPROVAL BY NISOURCE AND THE CITY OF COLUMBUS PRIOR TO IMPLEMENTING.

**SURVEY NOTES**

1. SURVEY DATUM IS OHIO STATE PLANES, SOUTH ZONE, US SURVEY FEET.
2. REFER TO STAMPED SURVEY DOCUMENTATION FOR FURTHER INFORMATION.

**CATHODIC PROTECTION NOTES**

1. TEST STATIONS TO BE ATTACHED AS INDICATED ON ALIGNMENT SHEETS. FINAL LOCATIONS TO BE APPROVED IN FIELD BY COMPANY REPRESENTATIVE. PLACEMENT MUST BE REMOVED FROM PAVEMENT, TRAFFIC LANES AND SHOULDERS, AND WHEN POSSIBLE ALIGNED WITH POWER POLES OR FENCE POSTS FOR ADDITIONAL MECHANICAL PROTECTION.
2. FOREIGN CROSSING TEST STATIONS SHALL BE ADDED AS STEEL FOREIGN CROSSINGS ARE DISCOVERED. NOT INSTALLING A TEST STATION AT AN IDENTIFIED FOREIGN CROSSING MUST BE APPROVED BY NISOURCE CORROSION SME.
3. ALL TEST STATION LEADS MUST HAVE ENOUGH EXCESS CABLE TO ALLOW FOR FULL REMOVAL OF TEST STATION HEAD WHILE TERMINATED.
4. CONTRACTOR MUST PULL A STICK OF PIPE AND INSPECT COATING IN THE RECEIVING HOLE. ANY FIELD APPLIED TO BE DISCUSSED WITH THE CORROSION DEPARTMENT AND APPROVED PRIOR TO APPLICATION.
5. ALL ABOVE GROUND PIPELINE SETTINGS, AND ASSEMBLIES SHALL BE COATED WITH AN APPROVED POLYURETHANE FOR A TOTAL SYSTEM DFT OF 12-16 MILS (GS 1420.050) - DENSO PROTAL ST EPOXY MASTIC APPLIED PER MANUFACTURERS INSTRUCTION.
6. CATHODIC PROTECTION SYSTEM WILL BE RECTIFIED. ANODE WILL BE INSTALLED WITH THE TEST STATION FOR TROUBLESHOOTING PURPOSES. DO NOT HOOK UP ANODES.
7. ALL BELOW GROUND JOINT/GIRTH WELDS TO BE EPOXIED WITH DENSO 7200OR OTHER CORROSION DEPARTMENT APPROVED 2 PART EPOXY. IF CONDITIONS PREVENT PROPER APPLICATION, CORROSION DEPARTMENT SHALL BE CONTACTED FOR APPROVAL OF PETROLATUM TAPE APPLICATION PROCEDURE. REFER TO GS 1420.040. ALL BORE GIRTH WELDS USE DENSO 7200 2 PART EPOXY WITH TRENTON MCO OUTERWRAP FOR PROTECTION DURING HDD.
8. USE DENSO S105 PASTE FOR PETROLATUM TAPE APPLICATION AS A PRIMER

9. CONTROL LINES NEED INSULATED ABOVE GRADE. INSTALL EACH INSULATOR WITH 17# ANODE AND (2)-#8 WIRES ON EAST RUN. TEST EACH INSULATOR BEFORE AND AFTER WELDING TO ENSURE ISOLATION. SEE GS 1430.250, SECTION 5.1.2 FOR TESTING ISOLATION.
10. INSTALL TEST STATIONS WITH 17# ANODE AND (2)- #12 BLACK WIRE AND (1)-12 RED ANODE WIRE. TRENTON PATCH PADS MAY BE USED FOR THERMITE WELDS. DO NOT CONNECT ANODE WIRE TO PIPE WIRE AFTER INSTALLATION. CALL CORROSION DEPARTMENT FOR QUESTIONS.
11. CONTACT STEPHANIE THOMAS (614-420-5610), BRAD LEONARD (614-400-7094) OR STEVE THOMPSON (740-412-3470) FOR ANY ADDITIONAL INFORMATION OR REQUESTS. CALL CORROSION TECH STEVE HOMPSON WHEN PIPE IS DELIVERED.
  - A. INSTALL TEST STATIONS WITH #17 ANODE ON MAINLINE PIPELINE ABOUT EVERY 1500 FEET. FIVE INCH FLUSH MOUNT BOXES WHEN NOT ABLE TO INSTALL GEROME, FINK, AND TRI-VIEW.
  - B. FILL OUT TEST POINT SHEETS WITH LOCATION INFORMATION OF EACH TEST STATIONS.
  - C. ALL FIELD APPLIED COATINGS SHALL BE APPLIED PER MANUFACTURER'S SPECIFICATION/INSTRUCTIONS.
  - D. BEFORE SANDBLASTING PIPE MUST BE CLEANED WITH MEK.
  - E. SANDBLAST ALL GIRTHWELDS TO A NACE 2 NEAR WHITE FINISH WITH A 2.5-5 MIL PROFILE FROM SANDBLASTING.
  - F. INSTALL DENSO 7125 (<40F) OR DENSO 7200 (>40F) TO BLASTED AREA WITH A 2 COAT APPLICATION OR OTHER APPROVED COMPANY APPLIED 2 PART EPOXY.
  - G. JEEP PIPE PRIOR TO INSTALLATION.
  - H. WHEN INSTALLING PIPE IN PAVED AREA USE A NON-ABRASIVE BACKFILL. THE PIPE MUCH BE PADDED 12" AROUND.
  - I. CONTACT CORROSION TECH WHEN PIPE IS DELIVERED SO COATING CAN BE INSPECTED BEFORE WORK BEGINS.

**DESIGN CLARIFICATIONS**

1. THIS DESIGN IS BASED ON AN APPROVED VARIANCE FROM THE PUCO AND COH. THE VARIANCE IS IN REFERENCE TO 192.179 "TRANSMISSION LINE VALVES" REGARDING THE IMPLEMENTATION OF RUPTURE MITIGATION VALVES (RMVs). CEPC IS UNDER THE EXPECTATION THAT THE PROPOSED PIPE INSTALLED UNDER THIS PROJECT WILL BE RE-CLASSIFICATION TO DISTRIBUTION BY JULY 2, 2035 OR WITHIN 6 MONTHS OF THE RETIREMENT OF THE APPLICABLE NCHP MILEAGE, WHICHEVER IS SOONER. THE PIPE AS DESIGNED IS SAFE TO OPERATE AT AN MAOP OF 190PSIG (SMYS OF 11.69% FOR 24", 9.74% FOR 20") AND WILL BE OTHERWISE DESIGNED AND PRESSURE TESTED TO TRANSMISSION STANDARDS AND REQUIREMENTS. REFER TO THE LATEST DESIGN BASIS FOR COMPLETE DESIGN PARAMETERS. ALSO, REFER TO PUCO/COH CORRESPONDENCE DATED AUGUST 27, 2024 AND RELATED LETTER OF INDEMNIFICATION.
2. THIS DESIGN COMPLIES WITH GS-2110.020, SECTION 5, "DESIGN OF PIPELINES FOR INTERNAL INSPECTION", AND THE CONTRACTOR SHALL ADHERE TO THE FITTING SPACING REQUIREMENTS. WHERE FIELD CONDITIONS REQUIRE DEVIATION FROM THESE REQUIREMENTS, PLEASE CONSULT ENGINEERING WITH AN RFI.

**FRANKLIN COUNTY NOTES**

1. FRANKLIN COUNTY ENGINEER'S MONUMENTATION - THE CONTRACTOR SHALL CONTACT THE FRANKLIN COUNTY ENGINEER'S OFFICE, SURVEY DEPARTMENT AT (614) 525-2489 TWO WORKING DAYS BEFORE DISTURBING ANY FRANKLIN COUNTY GEODETIC MONUMENTS (VERTICAL AND/OR HORIZONTAL) FOR REFERENCE AND REPLACEMENT.
2. FRANKLIN COUNTY PERMIT - THE CONTRACTOR SHALL CONTACT UTILITIES COORDINATOR AT (614) 525-3063 TO SECURE A WRITTEN PERMIT FROM THE FRANKLIN COUNTY ENGINEER'S OFFICE, 970 DUBLIN RD, A MINIMUM OF FIVE WORKING DAYS PRIOR TO BEGINNING WORK WITHIN FRANKLIN COUNTY R/W. THE ENGINEER PRIOR TO ISSUANCE OF THE PERMIT TO INSURE PROPER RESTORATION OF THE PAVEMENT AND R/W. THE CONTRACTOR SHALL PROVIDE THE FRANKLIN COUNTY ENGINEER'S OFFICE A 24-HOUR TELEPHONE NUMBER TO BE USED IN CASE OF AN EMERGENCY.
3. UNTREATED SEPTIC CONNECTIONS - THIS PLAN MAKES NO PROVISIONS FOR CONNECTING. NOR SHALL THE ENGINEER OR CONTRACTOR CONNECT, ANY UNTREATED SEPTIC DRAINAGE INTO THE HIGHWAY DRAINAGE SYSTEM. ANY PIPE POSSIBLY CARRYING UNTREATED SEPTIC FLOW SHALL BE LEFT EXPOSED. CALL FRANKLIN COUNTY PUBLIC HEALTH AT (614) 525-3909 AND THE FRANKLIN COUNTY DRAINAGE ENGINEER'S OFFICE AT (614) 525-5138 OR (614) 525-2787 FOR DIRECTION ON WHETHER OR NOT TO TIE THE PIPE INTO A HIGHWAY DRAINAGE SYSTEM OR PLUG THE PIPE AT R/W LINE W/ CLASS C CONCRETE. PAYMENT FOR PLUGGING SHALL BE INCLUDED IN CONTRACT PRICE FOR THE PERTINENT 202 OR 203 ITEM.
4. EXISTING/UNIDENTIFIED STORM SEWERS - IF ANY EXISTING STORM SEWERS OR FIELD TILES ARE ENCOUNTERED DURING CONSTRUCTION, LEAVE EXPOSED AND CONTACT THE FRANKLIN COUNTY DRAINAGE ENGINEER'S OFFICE AT (614) 525-5183 OR (614) 525-2787 TO HAVE THE EXISTING TILE SIZE, COMPOSITION, HORIZONTAL LOCATION, AND FLOWLINE SURVEYED.
5. EROSION CONTROL - THE CONTRACTOR SHALL FILE A NOTICE OF INTENT AS PER NPDES REQUIREMENTS INCLUDING ANY OFFSITE DUMPING OR BORROW AREAS. IT IS THE CONTRACTOR'S RESPONSIBILITY TO NOTIFY THEIR SUBCONTRACTORS OF THE OPEA REQUIREMENTS. FURNISH COPIES OF THE DOCUMENTS TO FCEO.

**FRANKLIN COUNTY PAVEMENT RESORATION NOTES**

1. ALL WIDTHS OF PAVEMENT MEASURING 3 LINEAR FEET OR LESS BETWEEN THE EXISTING EDGE OF PAVEMENT AND THE NEAREST SAWCUT LINE SHALL BE REPLACED FULL-DEPTH ALONG THE SPAN OF THE SAWCUT.
2. THE CONTRACTOR SHALL RESURFACE THE FULL WIDTH OF ANY LANE CONTAINING A SAWCUT LINE.
3. THE CONTRACTOR SHALL RESURFACE THE FULL WIDTH OF ANY ROADWAY BETWEEN ANY TWO TRANSVERSE SAWCUT LINES MEASURING 100 LINEAR FEET OR LESS.

**LEGEND**

DoT FIBER OPTIC	FO	FO	FO
DoT TELECOMM LINE	T	T	T
DOP BURIED POWER	E	E	E
GAS MAIN	G	G	G
DOP OVERHEAD POWER	OH	OH	OH
TR BURIED POWER/ TR OVERHEAD POWER	TR	TR	TR
UNKNOWN UTILITY	U		
FENCE	X	X	X
PROPERTY LINE			
RIGHT-OF-WAY	R/W	R/W	R/W
PULLBACK STRING	STRG	STRG	
CENTERLINE			
SEC LINE			
RAILROAD			
ROAD EDGE			
WATERWAY			
SANITARY SEWER	SS	SS	SS
STORM SEWER	ST	ST	ST
WATER MAIN	W	W	W
MAJOR CONT			
MINOR CONT			
PERMANENT EASEMENT			
EXISTING GAS EASEMENT			
TEMPORARY WORKSPACE WITHIN R.O.W.			
TEMPORARY EASEMENT			
TEMPORARY WORKSPACE			
COH OWNED PROPERTY			
EXISTING UTILITY EASEMENT			
STORM DRAIN	SD		
SANITARY SEWER MANHOLE	SS		
VALVE			
CATCH BASIN			
OVERHEAD POWER POLE			
POTHOLE LOCATION			
FIRE HYDRANT			
TRAFFIC BOX			



REVISIONS		
REV. #	DATE	DESCRIPTION
B	05/08/26	ISSUED FOR 2027 CONSTRUCTION
A	12/23/24	ISSUED FOR PERMIT

INTERNAL ENG.	AD	10/08/25	800-344-4077
DESIGNED BY	JEM	10/08/25	855-226-7671
CHECKED BY	JC	10/08/25	855-226-7671
AS-BUILT BY	TBD	TBD	TBD
	NAME	DATE	PHONE #

SITE NAME:  
**WO# 4000097527**  
**MAT MAI**  
**WBS L2 ANC34.0001.00035**  
 AGLER ROAD NCHP PIPELINE PROJECT  
 COLUMBUS/GAHANNA, FRANKLIN COUNTY, OH

DRAWING TITLE:  
**GENERAL NOTES & LEGEND**

DRAWING NO:  
**GN-2002**



**PROPOSED**

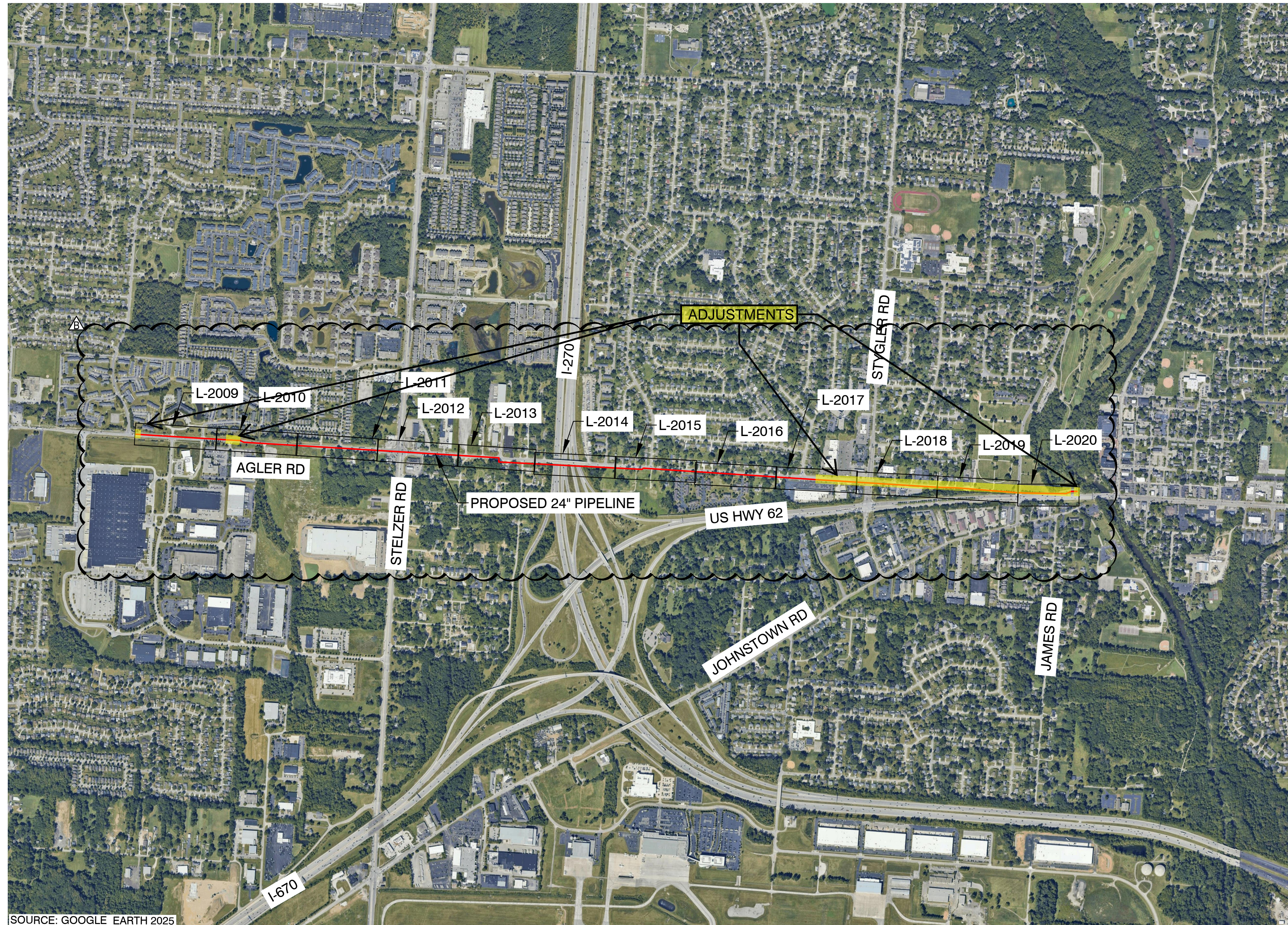
REVISIONS		
REV. #	DATE	DESCRIPTION
B	05/08/26	ISSUED FOR 2027 CONSTRUCTION
A	12/23/24	ISSUED FOR PERMIT

INTERNAL ENG.	AD	10/08/25	800-344-4077
DESIGNED BY	JEM	10/08/25	855-226-7671
CHECKED BY	JC	10/08/25	855-226-7671
AS-BUILT BY	TBD	TBD	TBD
	NAME	DATE	PHONE #

SITE NAME:  
**WO# 4000097527**  
**MAT MAI**  
**WBS L2 ANC34.0001.00035**  
 AGLER ROAD NCHP PIPELINE PROJECT  
 COLUMBUS/GAHANNA, FRANKLIN COUNTY, OH

DRAWING TITLE:  
 OVERVIEW SHEET

DRAWING NO:  
**O-2001**



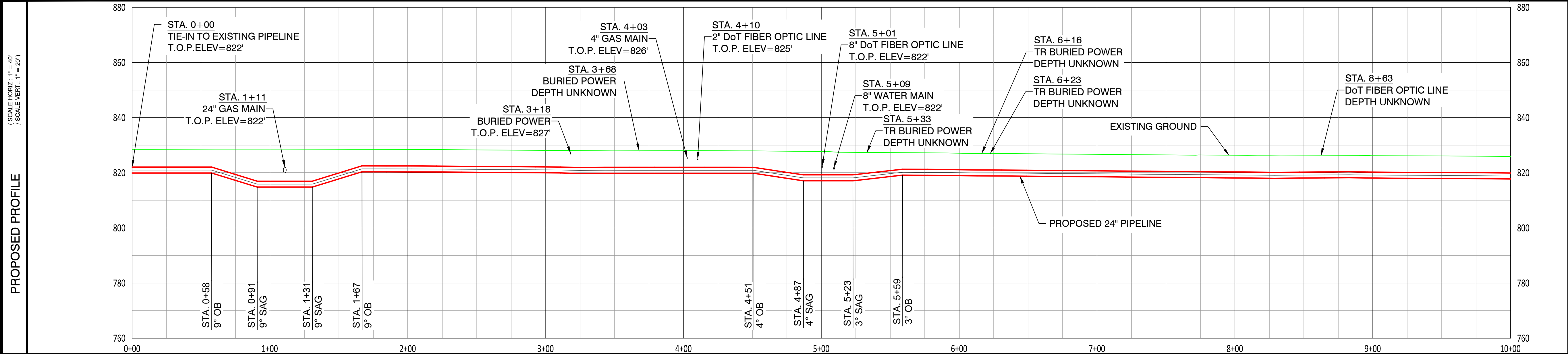
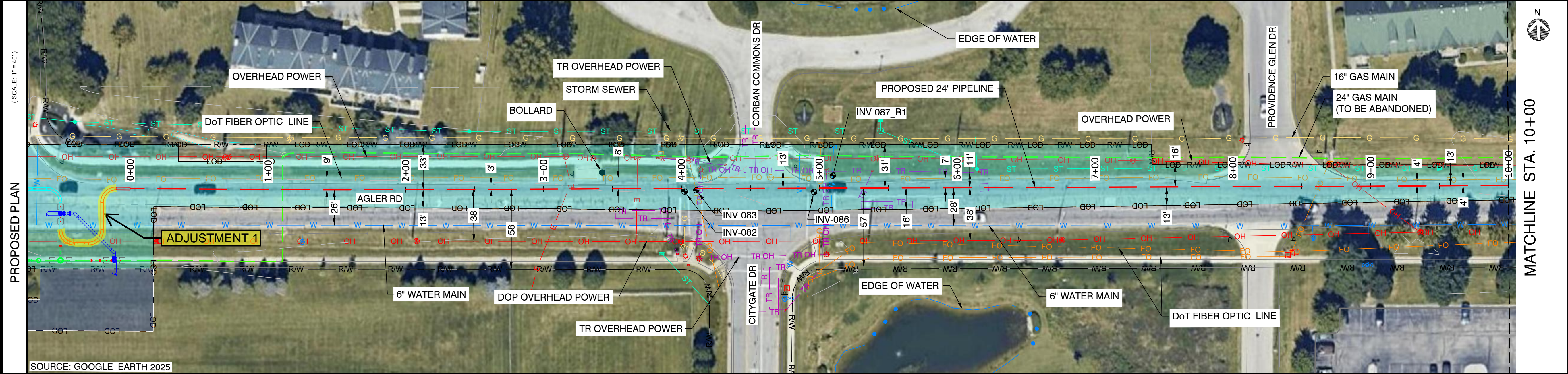
SOURCE: GOOGLE EARTH 2025

OVERVIEW SHEET INDEX  
 SCALE: 1"=800'

NOTE:  
 1. AERIAL IMAGERY IS FOR REFERENCE ONLY.

OWNERSHIP / PERMIT	CITY OF COLUMBUS	STA. 0+00	STA. 10+00
JURISDICTION / PARCEL ID	CITY OF COLUMBUS / FRANKLIN COUNTY		
TEST PRESSURE / DESIGN INFO	1080 PSIG MIN / 1280 PSIG MAX / CLASS IV / 650 PSIG		
CONSTRUCTION METHOD	OPEN CUT / OC-01		OPEN CUT / OC-02
PIPE			
FITTINGS			

HORIZONTAL STATIONING	STA. 1+11 24" GAS MAIN	STA. 3+18 BURIED POWER	STA. 3+68 BURIED POWER	STA. 4+03 4" GAS MAIN	STA. 4+10 2" DOT FIBER OPTIC LINE	STA. 4+14 TR OVERHEAD POWER	STA. 5+01 8" DOT FIBER OPTIC LINE	STA. 5+05 TR OVERHEAD POWER	STA. 5+09 8" WATER MAIN	STA. 5+33 TR BURIED POWER	STA. 6+16 TR BURIED POWER	STA. 6+23 TR BURIED POWER	STA. 8+63 DOT FIBER OPTIC LINE	STA. 8+91 OVERHEAD POWER
-----------------------	---------------------------	---------------------------	---------------------------	--------------------------	--------------------------------------	--------------------------------	--------------------------------------	--------------------------------	----------------------------	------------------------------	------------------------------	------------------------------	-----------------------------------	-----------------------------



- NOTES:
- CONTRACTOR SHALL EXPOSE AND VERIFY ALL UTILITY CROSSINGS.
  - SEE GENERAL NOTES FOR CLEARANCE REQUIREMENTS.
  - SEE TD-01 TO TD-03 FOR OPEN CUT DETAILS.
  - SERVICE LINE CROSSINGS SHOWN IN SURVEY ARE NOT STATIONED OR SHOWN IN PROFILE FOR CLARITY.
  - THE PIPELINE HAS GENERALLY BEEN DESIGNED WITH A COVER OF 6'-0" TO ACCOUNT FOR THE DEPTH OF UNKNOWN SERVICE LINES. MINIMUM ALLOWABLE DEPTH OF COVER IS 4'-0".
  - VERTICAL BENDS CALLED OUT IN PROFILE ARE FOR REFERENCE. CONTRACTOR TO MAKE USE OF ROPING AND FIELD BENDS WHERE POSSIBLE. REFER TO GS 3010.030 FOR FURTHER DETAILS.
  - CORROSION PROTECTION IS DESIGNED BY NISOURCE AND IS NOT COVERED WITHIN THE ENGINEER'S STAMP.
  - AERIAL IMAGERY IS FOR REFERENCE ONLY.
  - FITTING EXTENTS SHOWN IN THE PROFILE ARE FOR REFERENCE ONLY. REFER TO STATIONING BAND FOR LOCATIONS OF ANTICIPATED FITTINGS. A 3X DIAMETER OF STRAIGHT PIPE IS REQUIRED BETWEEN ALL FITTINGS. REFER TO GS 2110.020 FOR FURTHER DETAILS.



**CAMPOS EPC**  
 274 Marconi Blvd, Suite 130  
 Columbus, OH 43215  
 (380) 799-8503  
**PROPOSED**

REVISIONS		
REV. #	DATE	DESCRIPTION
C	05/08/26	ISSUED FOR 2027 CONSTRUCTION
B	06/18/25	ISSUED FOR FUTURE TIE-IN
A	12/23/24	ISSUED FOR PERMIT

INTERNAL ENG.	AD	10/08/25	800-344-4077
DESIGNED BY	JEM	10/08/25	855-226-7671
CHECKED BY	JC	10/08/25	855-226-7671
AS-BUILT BY	TBD	TBD	TBD
	NAME	DATE	PHONE #

SITE NAME:  
**WO# 4000097527**  
**MAT MAI**  
**WBS L2 ANC34.0001.00035**  
 AGLER ROAD NCHP PIPELINE PROJECT  
 COLUMBUS/GAHANNA, FRANKLIN COUNTY, OH

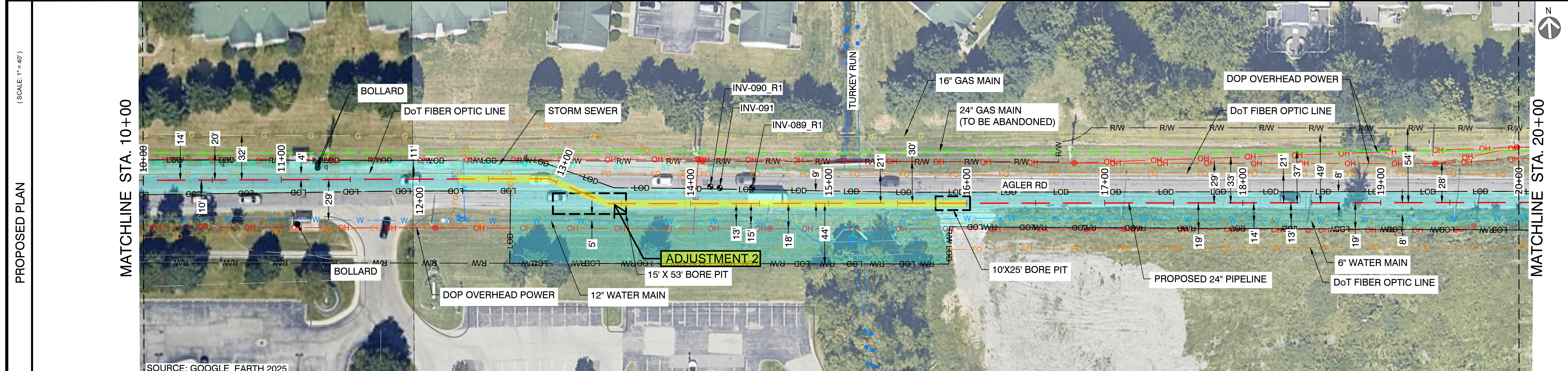
DRAWING TITLE:  
**24" CITYGATE TO US-62 ALIGNMENT**  
 STA. 0+00 TO STA. 10+00

DRAWING NO:  
**L-2009**

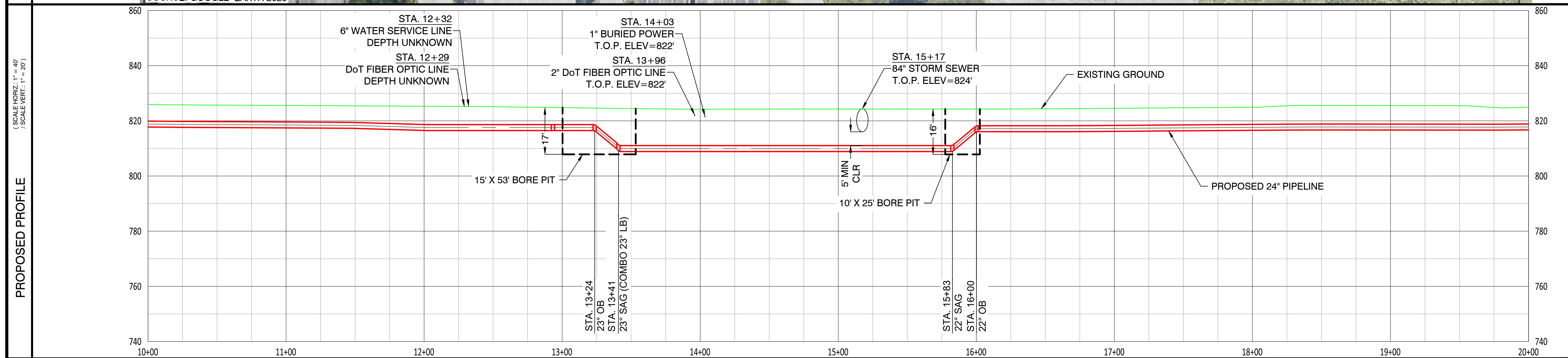
OWNERSHIP / PERMIT	CITY OF COLUMBUS		STA. 20+00
JURISDICTION / PARCEL ID	CITY OF COLUMBUS / FRANKLIN COUNTY		
TEST PRESSURE / DESIGN INFO	1080 PSIG MIN / 1280 PSIG MAX / CLASS IV / 650 PSIG		
CONSTRUCTION METHOD	OPEN CUT / OC-02	BORE	OPEN CUT / OC-03
PIPE			
FITTINGS			



HORIZONTAL STATIONING	STA. 10+00	STA. 12+29 DoT FIBER OPTIC LINE	STA. 12+32 6" WATER SERVICE LINE	STA. 12+50 TEST STATION	STA. 13+93 23" RB	STA. 13+41 23" LB (COMBO 23" SAG)	STA. 13+96 2" DoT FIBER OPTIC LINE	STA. 14+03 1" BURIED POWER	STA. 15+17 84" STORM SEWER	STA. 20+00
-----------------------	------------	------------------------------------	-------------------------------------	----------------------------	----------------------	--------------------------------------	---------------------------------------	-------------------------------	-------------------------------	------------



**CAMPOS**  
EPC  
274 Marconi Blvd, Suite 130  
Columbus, OH 43215  
(380) 799-8503  
**PROPOSED**



REVISIONS		
REV. #	DATE	DESCRIPTION
B	05/08/26	ISSUED FOR 2027 CONSTRUCTION
A	12/23/24	ISSUED FOR PERMIT

INTERNAL ENG.	AD	10/08/25	800-344-4077
DESIGNED BY	JEM	10/08/25	855-226-7671
CHECKED BY	JC	10/08/25	855-226-7671
AS-BUILT BY	TBD	TBD	TBD
	NAME	DATE	PHONE #

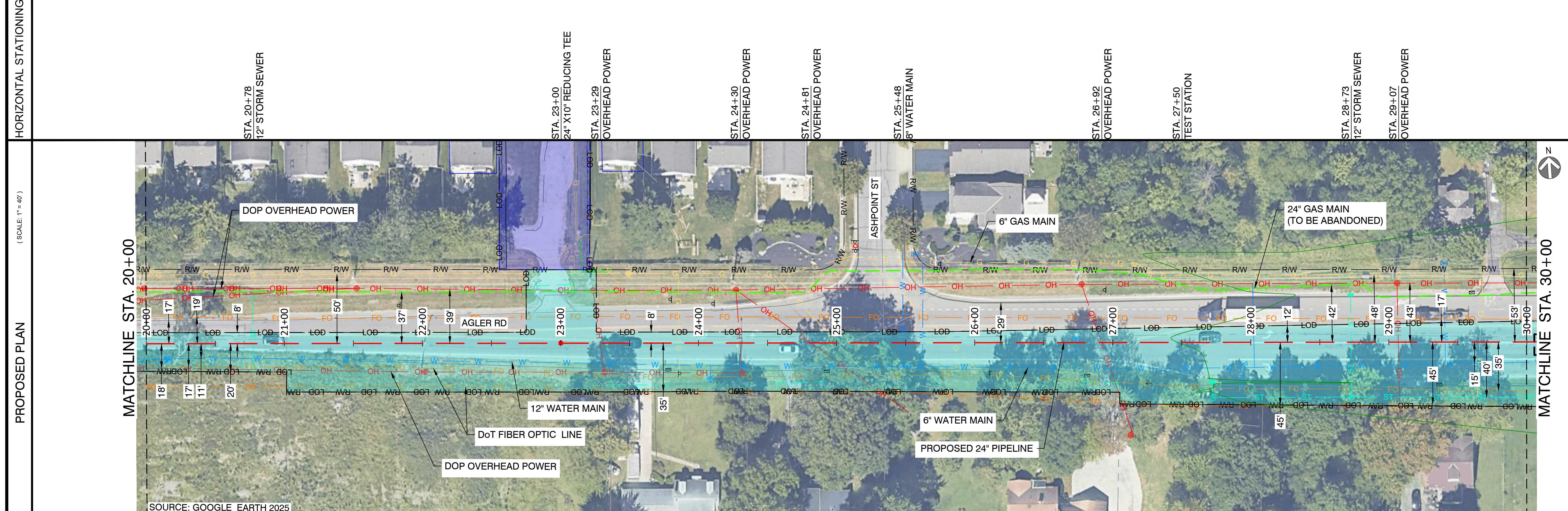
SITE NAME:  
**WO# 4000097527**  
**MAT MAI**  
**WBS L2 ANC34.0001.00035**  
AGLER ROAD NCHP PIPELINE PROJECT  
COLUMBUS/GAHANNA, FRANKLIN COUNTY, OH

DRAWING TITLE:  
**24" CITYGATE TO US-62 ALIGNMENT**  
STA. 10+00 TO STA. 20+00

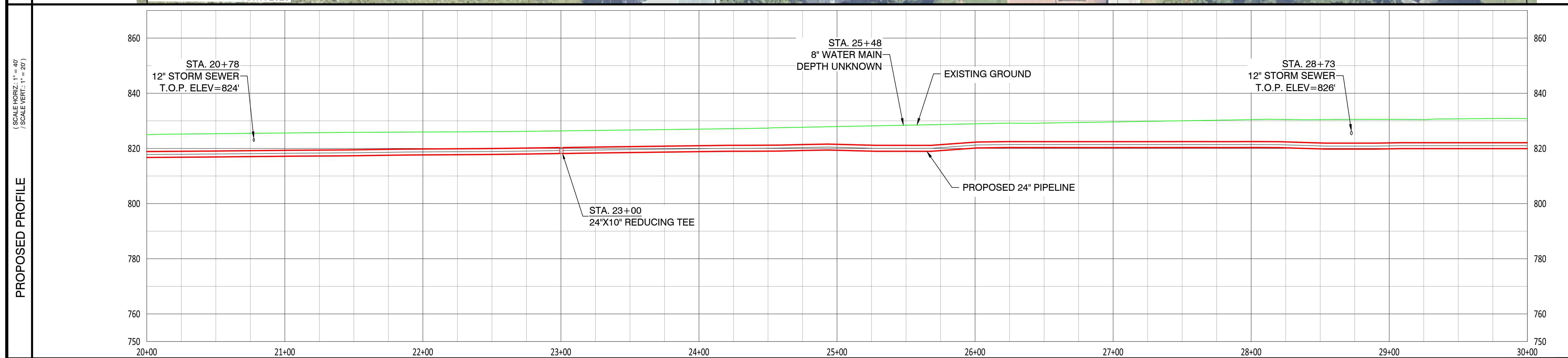
DRAWING NO:  
**L-2010**

- NOTES:
- CONTRACTOR SHALL EXPOSE AND VERIFY ALL UTILITY CROSSINGS.
  - SEE GENERAL NOTES FOR CLEARANCE REQUIREMENTS.
  - SEE TD-01 TO TD-03 FOR OPEN CUT DETAILS.
  - SERVICE LINE CROSSINGS SHOWN IN SURVEY ARE NOT STATIONED OR SHOWN IN PROFILE FOR CLARITY.
  - THE PIPELINE HAS GENERALLY BEEN DESIGNED WITH A COVER OF 6'-0" TO ACCOUNT FOR THE DEPTH OF UNKNOWN SERVICE LINES. MINIMUM ALLOWABLE DEPTH OF COVER IS 4'-0".
  - VERTICAL BENDS CALLED OUT IN PROFILE ARE FOR REFERENCE. CONTRACTOR TO MAKE USE OF ROPING AND FIELD BENDS WHERE POSSIBLE. REFER TO GS 3010.030 FOR FURTHER DETAILS.
  - CORROSION PROTECTION IS DESIGNED BY NISOURCE AND IS NOT COVERED WITHIN THE ENGINEER'S STAMP.
  - AERIAL IMAGERY IS FOR REFERENCE ONLY.
  - FITTING EXTENTS SHOWN IN THE PROFILE ARE FOR REFERENCE ONLY. REFER TO STATIONING BAND FOR LOCATIONS OF ANTICIPATED FITTINGS. A 3X DIAMETER OF STRAIGHT PIPE IS REQUIRED BETWEEN ALL FITTINGS. REFER TO GS 2110.020 FOR FURTHER DETAILS.

OWNERSHIP / PERMIT	CITY OF COLUMBUS		
JURISDICTION / PARCEL ID	CITY OF COLUMBUS / FRANKLIN COUNTY		
TEST PRESSURE / DESIGN INFO	1080 PSIG MIN / 1280 PSIG MAX / CLASS IV / 650 PSIG		
CONSTRUCTION METHOD	OPEN CUT / OC-03	OPEN CUT / OC-04	OPEN CUT / OC-05
PIPE			
FITTINGS			



**CAMPOS EPC**  
 274 Marconi Blvd, Suite 130  
 Columbus, OH 43215  
 (380) 799-8503  
**PROPOSED**



REVISIONS		
REV. #	DATE	DESCRIPTION
B	05/08/26	ISSUED FOR 2027 CONSTRUCTION
A	12/23/24	ISSUED FOR PERMIT

INTERNAL ENG.	AD	10/08/25	800-344-4077
DESIGNED BY	JEM	10/08/25	855-226-7671
CHECKED BY	JC	10/08/25	855-226-7671
AS-BUILT BY	TBD	TBD	TBD
	NAME	DATE	PHONE #

SITE NAME:  
**WO# 4000097527**  
**MAT MAI**  
**WBS L2 ANC34.0001.00035**  
 AGLER ROAD NCHP PIPELINE PROJECT  
 COLUMBUS/GAHANNA, FRANKLIN COUNTY, OH

DRAWING TITLE:  
**24" CITYGATE TO US-62 ALIGNMENT**  
**STA. 20+00 TO STA. 30+00**

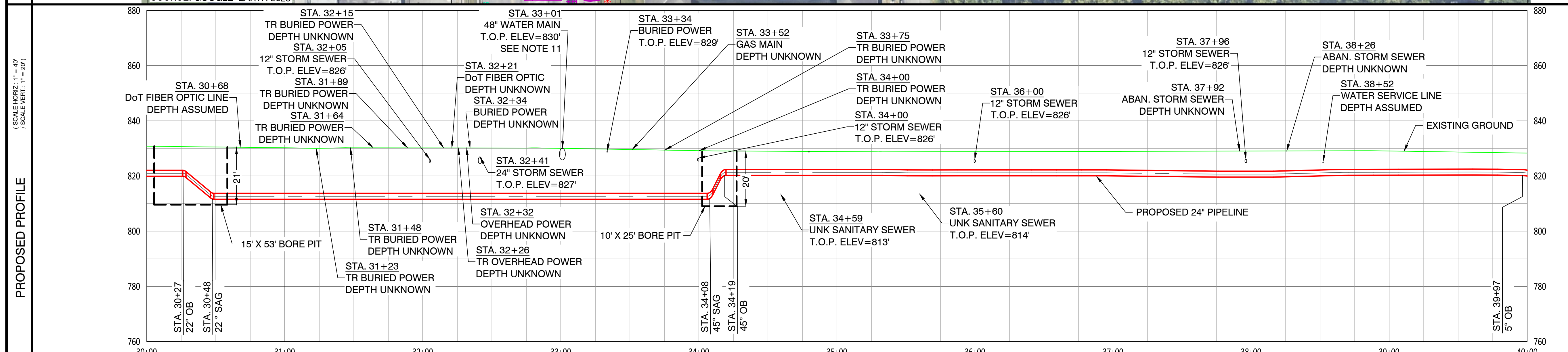
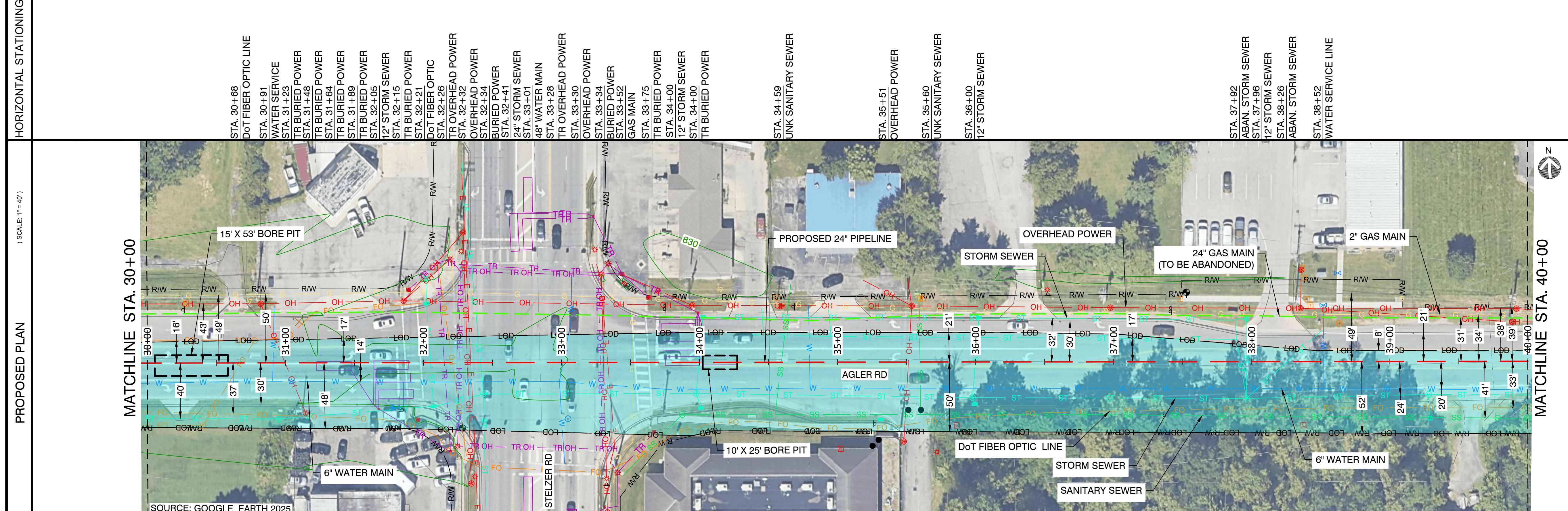
DRAWING NO:  
**L-2011**

- NOTES:
- CONTRACTOR SHALL EXPOSE AND VERIFY ALL UTILITY CROSSINGS.
  - SEE GENERAL NOTES FOR CLEARANCE REQUIREMENTS.
  - SEE TD-01 TO TD-03 FOR OPEN CUT DETAILS.
  - SERVICE LINE CROSSINGS SHOWN IN SURVEY ARE NOT STATIONED OR SHOWN IN PROFILE FOR CLARITY.
  - THE PIPELINE HAS GENERALLY BEEN DESIGNED WITH A COVER OF 6'-0" TO ACCOUNT FOR THE DEPTH OF UNKNOWN SERVICE LINES. MINIMUM ALLOWABLE DEPTH OF COVER IS 4'-0".
  - VERTICAL BENDS CALLED OUT IN PROFILE ARE FOR REFERENCE. CONTRACTOR TO MAKE USE OF ROPING AND FIELD BENDS WHERE POSSIBLE. REFER TO GS 3010.030 FOR FURTHER DETAILS.
  - CORROSION PROTECTION IS DESIGNED BY NISOURCE AND IS NOT COVERED WITHIN THE ENGINEER'S STAMP.
  - AERIAL IMAGERY IS FOR REFERENCE ONLY.
  - FITTING EXTENTS SHOWN IN THE PROFILE ARE FOR REFERENCE ONLY. REFER TO STATIONING BAND FOR LOCATIONS OF ANTICIPATED FITTINGS. A 3X DIAMETER OF STRAIGHT PIPE IS REQUIRED BETWEEN ALL FITTINGS. REFER TO GS 2110.020 FOR FURTHER DETAILS.

OWNERSHIP / PERMIT	CITY OF COLUMBUS		FRANKLIN COUNTY	
JURISDICTION / PARCEL ID	CITY OF COLUMBUS / FRANKLIN COUNTY			
TEST PRESSURE / DESIGN INFO	1080 PSIG MIN / 1280 PSIG MAX / CLASS IV / 650 PSIG			
CONSTRUCTION METHOD	OPEN CUT / OC-05	BORE	OPEN CUT / OC-06	OPEN CUT / OC-07
PIPE				
FITTINGS				



**PROPOSED**



- NOTES:
- CONTRACTOR SHALL EXPOSE AND VERIFY ALL UTILITY CROSSINGS.
  - SEE GENERAL NOTES FOR CLEARANCE REQUIREMENTS.
  - SEE TD-01 TO TD-03 FOR OPEN CUT DETAILS.
  - SERVICE LINE CROSSINGS SHOWN IN SURVEY ARE NOT STATIONED OR SHOWN IN PROFILE FOR CLARITY.
  - THE PIPELINE HAS GENERALLY BEEN DESIGNED WITH A COVER OF 6'-0" TO ACCOUNT FOR THE DEPTH OF UNKNOWN SERVICE LINES. MINIMUM ALLOWABLE DEPTH OF COVER IS 4'-0".
  - VERTICAL BENDS CALLED OUT IN PROFILE ARE FOR REFERENCE. CONTRACTOR TO MAKE USE OF ROPING AND FIELD BENDS WHERE POSSIBLE. REFER TO GS 3010.030 FOR FURTHER DETAILS.
  - CORROSION PROTECTION IS DESIGNED BY NISOURCE AND IS NOT COVERED WITHIN THE ENGINEER'S STAMP.
  - AERIAL IMAGERY IS FOR REFERENCE ONLY.
  - FITTING EXTENTS SHOWN IN THE PROFILE ARE FOR REFERENCE ONLY. REFER TO STATIONING BAND FOR LOCATIONS OF ANTICIPATED FITTINGS. A 3X DIAMETER OF STRAIGHT PIPE IS REQUIRED BETWEEN ALL FITTINGS. REFER TO GS 2110.020 FOR FURTHER DETAILS.
  - AREAS WITHIN FRANKLIN COUNTY JURISDICTION ARE REQUIRED TO REPAIR ALL TRENCHES AS FULL DEPTH ASPHALT REPLACEMENT. CONCRETE IS ONLY ALLOWED TO BE USED FOR TEMPORARY PURPOSES. SEE TD-19 FOR DETAILS.
  - EXISTING UTILITY DEPTH FOUND DURING GROUND PENETRATING RADAR (GPR) SURVEY.

REVISIONS		
REV. #	DATE	DESCRIPTION
B	05/08/26	ISSUED FOR 2027 CONSTRUCTION
A	12/23/24	ISSUED FOR PERMIT

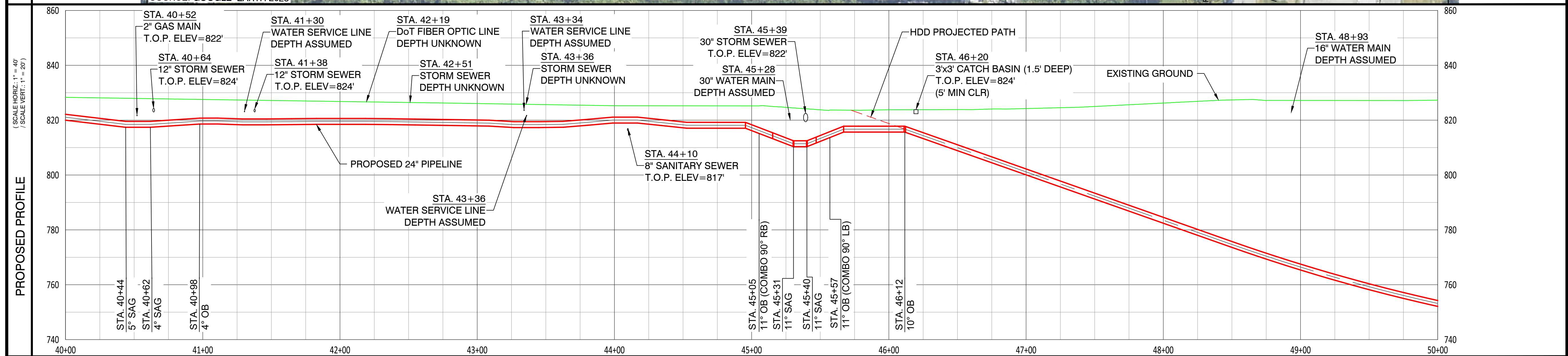
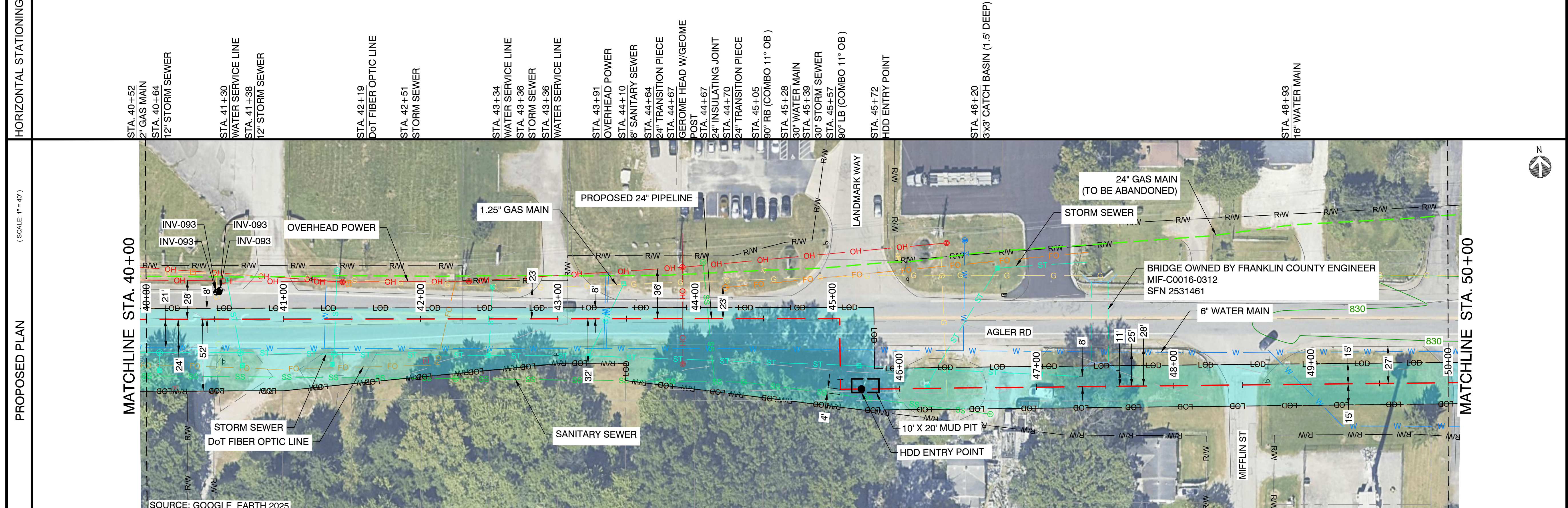
INTERNAL ENG.	AD	10/08/25	800-344-4077
DESIGNED BY	JEM	10/08/25	855-226-7671
CHECKED BY	JC	10/08/25	855-226-7671
AS-BUILT BY	TBD	TBD	TBD
	NAME	DATE	PHONE #

SITE NAME:  
**WO# 4000097527**  
**MAT MAI**  
**WBS L2 ANC34.0001.00035**  
 AGLER ROAD NCHP PIPELINE PROJECT  
 COLUMBUS/GAHANNA, FRANKLIN COUNTY, OH

DRAWING TITLE:  
**24" CITYGATE TO US-62 ALIGNMENT**  
 STA. 30+00 TO STA. 40+00

DRAWING NO:  
**L-2012**

OWNERSHIP / PERMIT	FRANKLIN COUNTY		STA. 40+00
JURISDICTION / PARCEL ID	CITY OF COLUMBUS / FRANKLIN COUNTY		STA. 50+00
TEST PRESSURE / DESIGN INFO	1080 PSIG MIN / 1280 PSIG MAX / CLASS IV / 650 PSIG		
CONSTRUCTION METHOD	OPEN CUT / OC-07	OPEN CUT VARIES / LOD 40-76	HDD
PIPE			
FITTINGS			



- NOTES:
- CONTRACTOR SHALL EXPOSE AND VERIFY ALL UTILITY CROSSINGS.
  - SEE GENERAL NOTES FOR CLEARANCE REQUIREMENTS.
  - SEE TD-01 TO TD-03 FOR OPEN CUT DETAILS.
  - SERVICE LINE CROSSINGS SHOWN IN SURVEY ARE NOT STATIONED OR SHOWN IN PROFILE FOR CLARITY.
  - THE PIPELINE HAS GENERALLY BEEN DESIGNED WITH A COVER OF 6'-0" TO ACCOUNT FOR THE DEPTH OF UNKNOWN SERVICE LINES. MINIMUM ALLOWABLE DEPTH OF COVER IS 4'-0".
  - VERTICAL BENDS CALLED OUT IN PROFILE ARE FOR REFERENCE. CONTRACTOR TO MAKE USE OF ROPING AND FIELD BENDS WHERE POSSIBLE. REFER TO GS 3010.030 FOR FURTHER DETAILS.
  - CORROSION PROTECTION IS DESIGNED BY NISOURCE AND IS NOT COVERED WITHIN THE ENGINEER'S STAMP.
  - AERIAL IMAGERY IS FOR REFERENCE ONLY.
  - FITTING EXTENTS SHOWN IN THE PROFILE ARE FOR REFERENCE ONLY. REFER TO STATIONING BAND FOR LOCATIONS OF ANTICIPATED FITTINGS. A 3X DIAMETER OF STRAIGHT PIPE IS REQUIRED BETWEEN ALL FITTINGS. REFER TO GS 2110.020 FOR FURTHER DETAILS.
  - AREAS WITHIN FRANKLIN COUNTY JURISDICTION ARE REQUIRED TO REPAIR ALL TRENCHES AS FULL DEPTH ASPHALT REPLACEMENT. CONCRETE IS ONLY ALLOWED TO BE USED FOR TEMPORARY PURPOSES. SEE TD-19 FOR DETAILS.

**CAMPOS EPC**  
 274 Marconi Blvd, Suite 130  
 Columbus, OH 43215  
 (380) 799-8503  
**PROPOSED**

REVISIONS		
REV. #	DATE	DESCRIPTION
B	05/08/26	ISSUED FOR 2027 CONSTRUCTION
A	12/23/24	ISSUED FOR PERMIT

INTERNAL ENG.	AD	10/08/25	800-344-4077
DESIGNED BY	JEM	10/08/25	855-226-7671
CHECKED BY	JC	10/08/25	855-226-7671
AS-BUILT BY	TBD	TBD	TBD
	NAME	DATE	PHONE #

SITE NAME:  
**WO# 4000097527**  
**MAT MAI**  
**WBS L2 ANC34.0001.00035**  
 AGLER ROAD NCHP PIPELINE PROJECT  
 COLUMBUS/GAHANNA, FRANKLIN COUNTY, OH

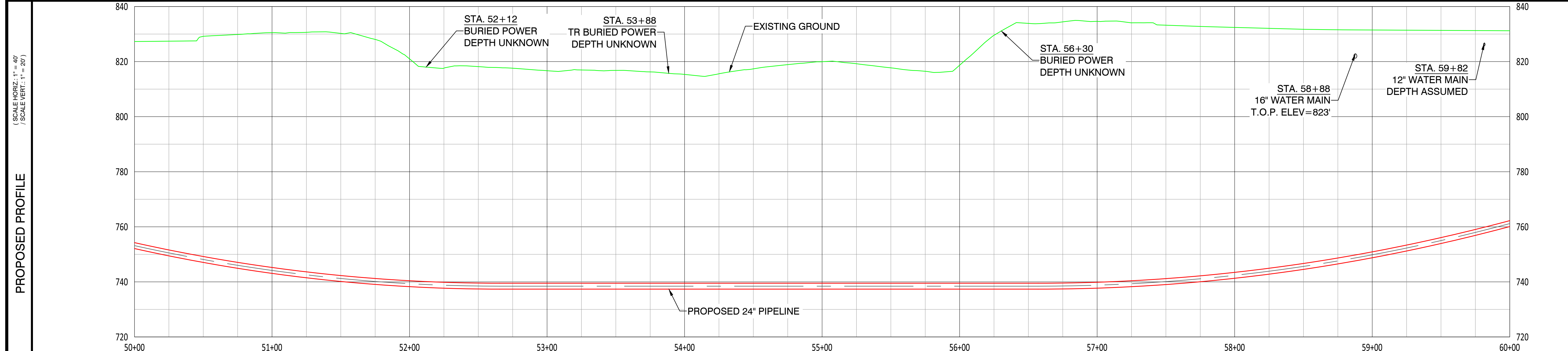
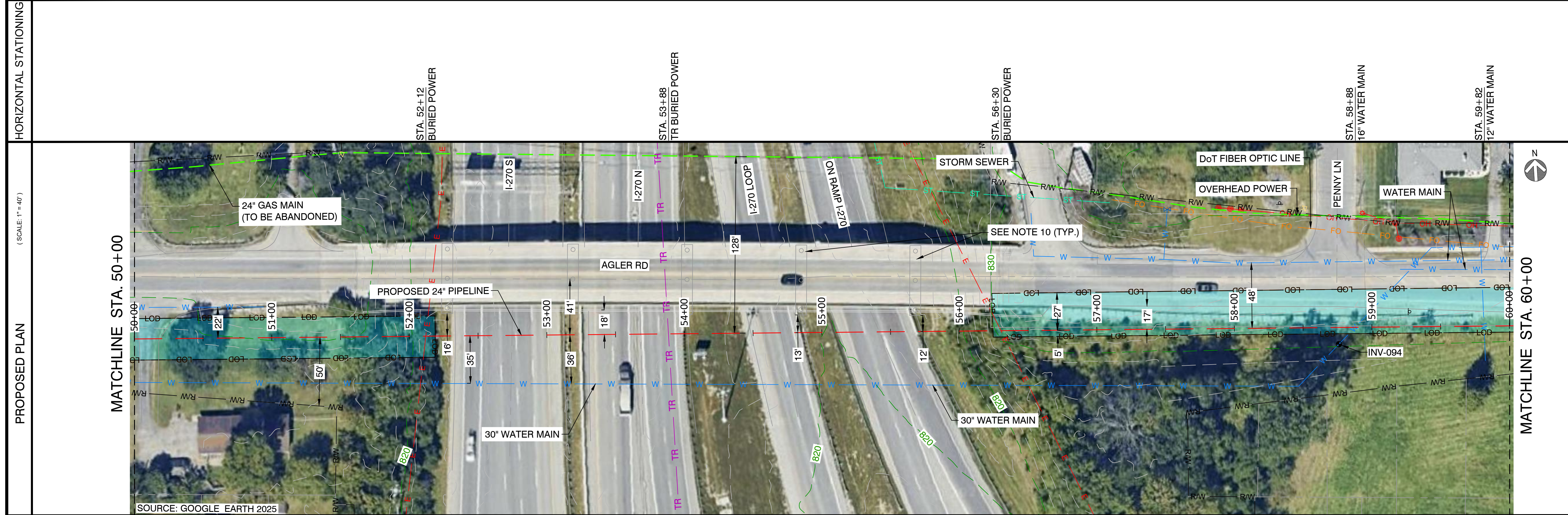
DRAWING TITLE:  
**24" CITYGATE TO JAMES ALIGNMENT**  
 STA. 40+00 TO STA. 50+00

DRAWING NO:  
**L-2013**

OWNERSHIP / PERMIT	FRANKLIN COUNTY	OH-270	CITY OF GAHANNA / EUFR-25-94 (PHASE 1)
JURISDICTION / PARCEL ID	CITY OF COLUMBUS / FRANKLIN COUNTY	ODOT	CITY OF GAHANNA / FRANKLIN COUNTY
TEST PRESSURE / DESIGN INFO	1080 PSIG MIN / 1280 PSIG MAX / CLASS IV / 650 PSIG		
CONSTRUCTION METHOD	HDD		
PIPE			
FITTINGS			



**PROPOSED**



REVISIONS		
REV. #	DATE	DESCRIPTION
B	05/08/26	ISSUED FOR 2027 CONSTRUCTION
A	12/23/24	ISSUED FOR PERMIT

INTERNAL ENG.	AD	10/08/25	800-344-4077
DESIGNED BY	JMJ	10/08/25	855-266-7671
CHECKED BY	SW	10/08/25	855-266-7671
AS-BUILT BY	TBD	TBD	TBD
	NAME	DATE	PHONE #

SITE NAME:  
**WO# 4000097527**  
**MAT MAI**  
**WBS L2 ANC34.0001.00035**  
 AGLER ROAD NCHP PIPELINE PROJECT  
 COLUMBUS/GAHANNA, FRANKLIN COUNTY, OH

DRAWING TITLE:  
**24" CITYGATE TO US-62 ALIGNMENT**  
**STA. 50+00 TO STA. 60+00**

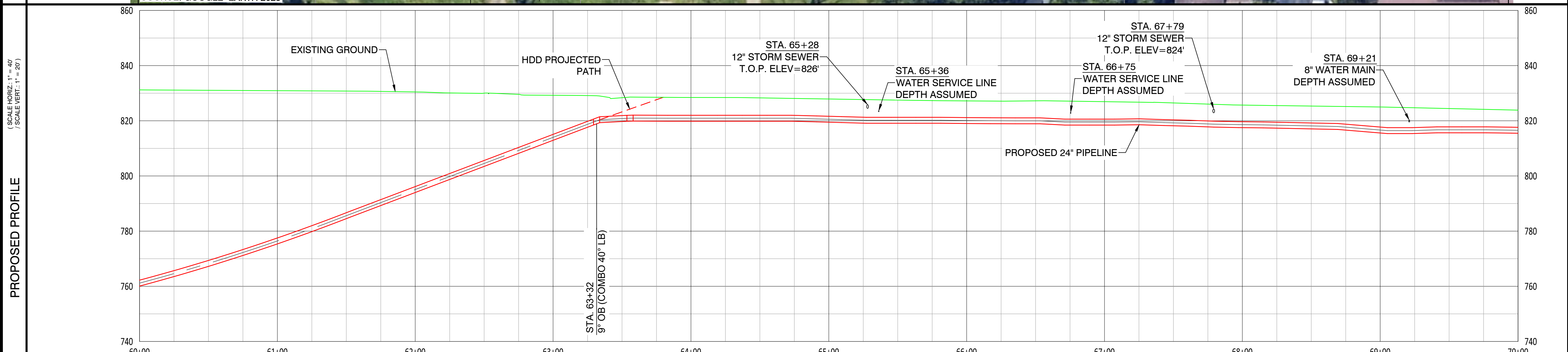
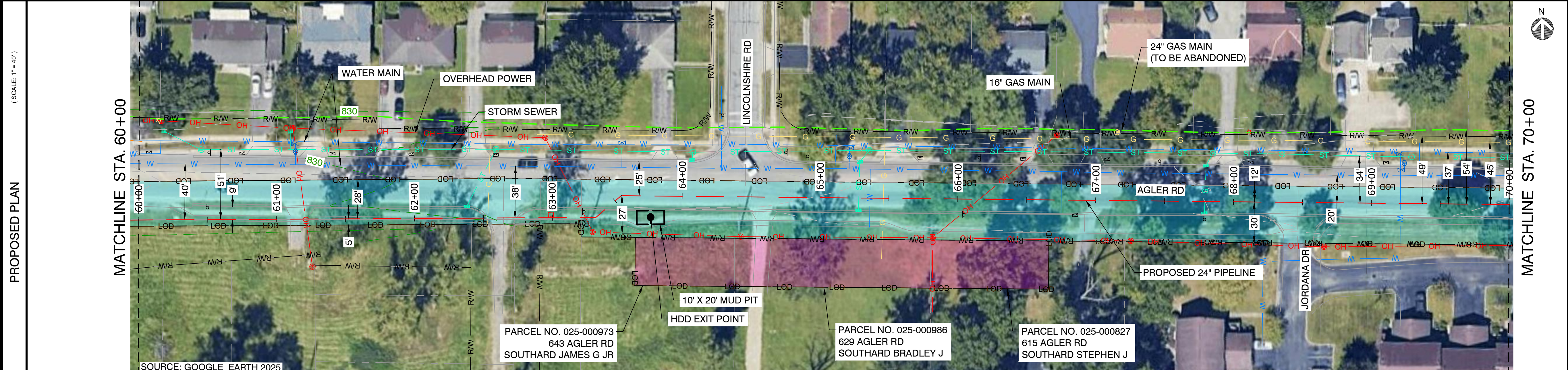
DRAWING NO:  
**L-2014**

- NOTES:
- CONTRACTOR SHALL EXPOSE AND VERIFY ALL UTILITY CROSSINGS.
  - SEE GENERAL NOTES FOR CLEARANCE REQUIREMENTS.
  - SEE TD-01 TO TD-03 FOR OPEN CUT DETAILS.
  - SERVICE LINE CROSSINGS SHOWN IN SURVEY ARE NOT STATIONED OR SHOWN IN PROFILE FOR CLARITY.
  - THE PIPELINE HAS GENERALLY BEEN DESIGNED WITH A COVER OF 6'-0" TO ACCOUNT FOR THE DEPTH OF UNKNOWN SERVICE LINES. MINIMUM ALLOWABLE DEPTH OF COVER IS 4'-0".
  - VERTICAL BENDS CALLED OUT IN PROFILE ARE FOR REFERENCE. CONTRACTOR TO MAKE USE OF ROPING AND FIELD BENDS WHERE POSSIBLE. REFER TO GS 3010.030 FOR FURTHER DETAILS.
  - CORROSION PROTECTION IS DESIGNED BY NISOURCE AND IS NOT COVERED WITHIN THE ENGINEER'S STAMP.
  - AERIAL IMAGERY IS FOR REFERENCE ONLY.
  - FITTING EXTENTS SHOWN IN THE PROFILE ARE FOR REFERENCE ONLY. REFER TO STATIONING BAND FOR LOCATIONS OF ANTICIPATED FITTINGS. A 3X DIAMETER OF STRAIGHT PIPE IS REQUIRED BETWEEN ALL FITTINGS. REFER TO GS 2110.020 FOR FURTHER DETAILS.
  - BRIDGE FOOTERS AND COLUMNS WERE DRAWN BASED ON ODOT LEGACY DRAWING FRA-270-3487 DATED 02/18/1969 AND WERE NOT CAPTURED BY SURVEY.
  - CONTRACTOR TO MAINTAIN NOISE LEVEL WITHIN ALLOTTED DECIBEL RANGE THROUGHOUT CONSTRUCTION. REFER TO GAHANNA MUNICIPAL CODE 559.02 AND 559.03.A.10.B.

OWNERSHIP / PERMIT	CITY OF GAHANNA / EUFR-25-94 (PHASE 1)		STA. 60+00
JURISDICTION / PARCEL ID	CITY OF GAHANNA / FRANKLIN COUNTY		STA. 70+00
TEST PRESSURE / DESIGN INFO	1080 PSIG MIN / 1280 PSIG MAX / CLASS IV / 650 PSIG		
CONSTRUCTION METHOD	HDD	OPEN CUT / OC-08	
PIPE			
FITTINGS			



HORIZONTAL STATIONING	STA. 61+21 OVERHEAD POWER	STA. 63+24 OVERHEAD POWER	STA. 63+32 40" LB (COMBO 9" OB)	STA. 63+50 TEST STATION	STA. 63+56 41" RB	STA. 63+72 HDD EXIT POINT	STA. 65+28 12" STORM SEWER	STA. 65+36 WATER SERVICE LINE	STA. 66+16 OVERHEAD POWER	STA. 66+75 WATER SERVICE LINE	STA. 67+79 12" STORM SEWER	STA. 69+21 8" WATER MAIN
-----------------------	---------------------------	---------------------------	---------------------------------	-------------------------	-------------------	---------------------------	----------------------------	-------------------------------	---------------------------	-------------------------------	----------------------------	--------------------------



- NOTES:
- CONTRACTOR SHALL EXPOSE AND VERIFY ALL UTILITY CROSSINGS.
  - SEE GENERAL NOTES FOR CLEARANCE REQUIREMENTS.
  - SEE TD-01 TO TD-03 FOR OPEN CUT DETAILS.
  - SERVICE LINE CROSSINGS SHOWN IN SURVEY ARE NOT STATIONED OR SHOWN IN PROFILE FOR CLARITY.
  - THE PIPELINE HAS GENERALLY BEEN DESIGNED WITH A COVER OF 6'-0" TO ACCOUNT FOR THE DEPTH OF UNKNOWN SERVICE LINES. MINIMUM ALLOWABLE DEPTH OF COVER IS 4'-0".
  - VERTICAL BENDS CALLED OUT IN PROFILE ARE FOR REFERENCE. CONTRACTOR TO MAKE USE OF ROPING AND FIELD BENDS WHERE POSSIBLE. REFER TO GS 3010.030 FOR FURTHER DETAILS.
  - CORROSION PROTECTION IS DESIGNED BY NISOURCE AND IS NOT COVERED WITHIN THE ENGINEER'S STAMP.
  - AERIAL IMAGERY IS FOR REFERENCE ONLY.
  - FITTING EXTENTS SHOWN IN THE PROFILE ARE FOR REFERENCE ONLY. REFER TO STATIONING BAND FOR LOCATIONS OF ANTICIPATED FITTINGS. A 3X DIAMETER OF STRAIGHT PIPE IS REQUIRED BETWEEN ALL FITTINGS. REFER TO GS 2110.020 FOR FURTHER DETAILS.
  - CONTRACTOR TO MAINTAIN NOISE LEVEL WITHIN ALLOTTED DECIBEL RANGE THROUGHOUT CONSTRUCTION. REFER TO GAHANNA MUNICIPAL CODE 559.02 AND 559.03.A.10.B.

274 Marconi Blvd, Suite 130  
Columbus, OH 43215  
(380) 799-8503  
**PROPOSED**

REVISIONS		
REV. #	DATE	DESCRIPTION
B	05/08/26	ISSUED FOR 2027 CONSTRUCTION
A	12/23/24	ISSUED FOR PERMIT

INTERNAL ENG.	AD	10/08/25	800-344-4077
DESIGNED BY	JMJ	10/08/25	855-266-7671
CHECKED BY	SW	10/08/25	855-266-7671
AS-BUILT BY	TBD	TBD	TBD
	NAME	DATE	PHONE #

SITE NAME:  
**WO# 4000097527**  
**MAT MAI**  
**WBS L2 ANC34.0001.00035**  
 AGLER ROAD NCHP PIPELINE PROJECT  
 COLUMBUS/GAHANNA, FRANKLIN COUNTY, OH

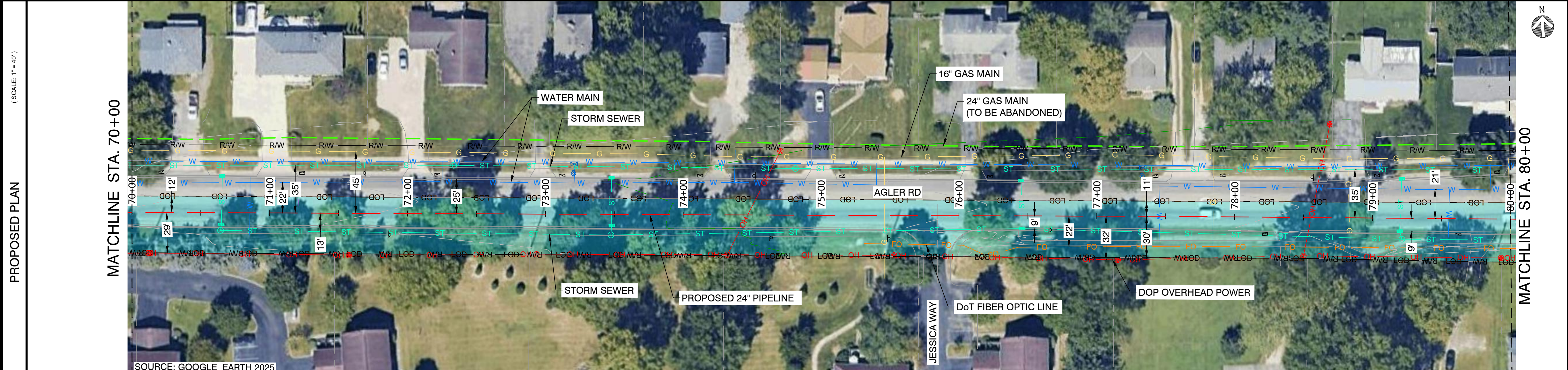
DRAWING TITLE:  
**24" CITYGATE TO US-62 ALIGNMENT**  
**STA. 60+00 TO STA. 70+00**

DRAWING NO:  
**L-2015**

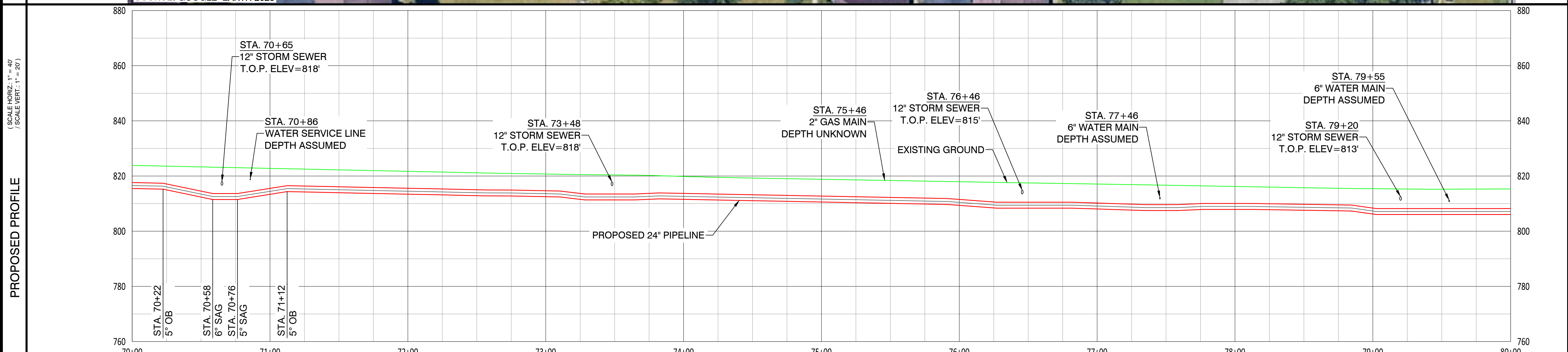
OWNERSHIP / PERMIT	CITY OF GAHANNA / EUFR-25-94 (PHASE 1)
JURISDICTION / PARCEL ID	CITY OF GAHANNA / FRANKLIN COUNTY
TEST PRESSURE / DESIGN INFO	1080 PSIG MIN / 1280 PSIG MAX / CLASS IV / 650 PSIG
CONSTRUCTION METHOD	OPEN CUT / OC-09
PIPE	
FITTINGS	



HORIZONTAL STATIONING	STA. 70+00	STA. 80+00
	STA. 70+65 12" STORM SEWER	STA. 70+86 WATER SERVICE LINE
	STA. 73+48 12" STORM SEWER	STA. 74+47 OVERHEAD POWER
	STA. 75+46 2" GAS MAIN	STA. 76+46 12" STORM SEWER
	STA. 77+46 6" WATER MAIN	STA. 78+50 TEST STATION
	STA. 78+56 OVERHEAD POWER	STA. 79+20 12" STORM SEWER
	STA. 79+55 6" WATER MAIN	



**CAMPOS EPC**  
 274 Marconi Blvd, Suite 130  
 Columbus, OH 43215  
 (380) 799-8503  
**PROPOSED**



REVISIONS		
REV. #	DATE	DESCRIPTION
B	05/08/26	ISSUED FOR 2027 CONSTRUCTION
A	12/23/24	ISSUED FOR PERMIT

INTERNAL ENG.	AD	10/08/25	800-344-4077
DESIGNED BY	JMJ	10/08/25	855-266-7671
CHECKED BY	SW	10/08/25	855-266-7671
AS-BUILT BY	TBD	TBD	TBD
	NAME	DATE	PHONE #

SITE NAME:  
**WO# 4000097527**  
**MAT MAI**  
**WBS L2 ANC34.0001.00035**  
 AGLER ROAD NCHP PIPELINE PROJECT  
 COLUMBUS/GAHANNA, FRANKLIN COUNTY, OH

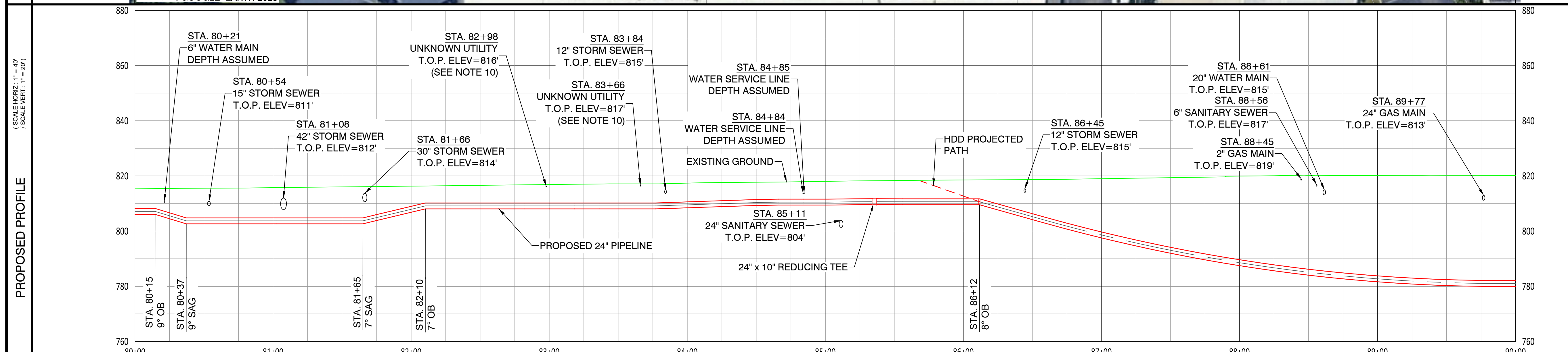
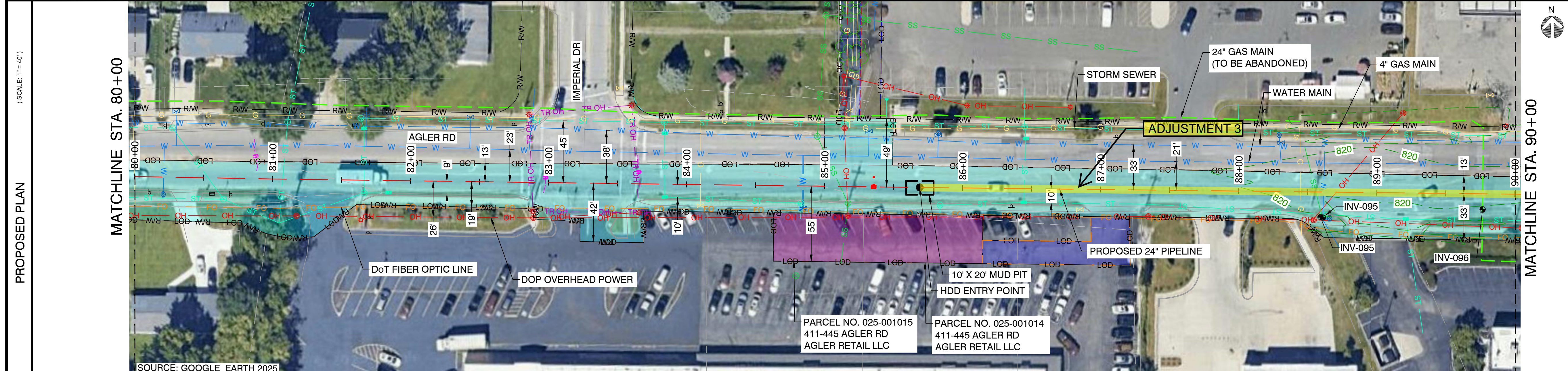
DRAWING TITLE:  
**24" CITYGATE TO US-62 ALIGNMENT**  
**STA. 70+00 TO STA. 80+00**

DRAWING NO:  
**L-2016**

- NOTES:
- CONTRACTOR SHALL EXPOSE AND VERIFY ALL UTILITY CROSSINGS.
  - SEE GENERAL NOTES FOR CLEARANCE REQUIREMENTS.
  - SEE TD-01 TO TD-03 FOR OPEN CUT DETAILS.
  - SERVICE LINE CROSSINGS IN SURVEY ARE NOT STATIONED OR SHOWN IN PROFILE FOR CLARITY.
  - THE PIPELINE HAS GENERALLY BEEN DESIGNED WITH A COVER OF 6'-0" TO ACCOUNT FOR THE DEPTH OF UNKNOWN SERVICE LINES. MINIMUM ALLOWABLE DEPTH OF COVER IS 4'-0".
  - VERTICAL BENDS CALLED OUT IN PROFILE ARE FOR REFERENCE. CONTRACTOR TO MAKE USE OF ROPING AND FIELD BENDS WHERE POSSIBLE. REFER TO GS 3010.030 FOR FURTHER DETAILS.
  - CORROSION PROTECTION IS DESIGNED BY NISOURCE AND IS NOT COVERED WITHIN THE ENGINEER'S STAMP.
  - AERIAL IMAGERY IS FOR REFERENCE ONLY.
  - FITTING EXTENTS SHOWN IN THE PROFILE ARE FOR REFERENCE ONLY. REFER TO STATIONING BAND FOR LOCATIONS OF ANTICIPATED FITTINGS. A 3X DIAMETER OF STRAIGHT PIPE IS REQUIRED BETWEEN ALL FITTINGS. REFER TO GS 2110.020 FOR FURTHER DETAILS.
  - CONTRACTOR TO MAINTAIN NOISE LEVEL WITHIN ALLOTTED DECIBEL RANGE THROUGHOUT CONSTRUCTION. REFER TO GAHANNA MUNICIPAL CODE 559.02 AND 559.03.A.10.B.

OWNERSHIP / PERMIT	CITY OF GAHANNA / EUFR-25-94 (PHASE 1)			CITY OF GAHANNA / EUFR-26-31 (PHASE 2)			STA. 90+00
JURISDICTION / PARCEL ID	CITY OF GAHANNA / FRANKLIN COUNTY			CITY OF GAHANNA / FRANKLIN COUNTY			
TEST PRESSURE / DESIGN INFO	1080 PSIG MIN / 1280 PSIG MAX / CLASS IV / 650 PSIG			1080 PSIG MIN / 1280 PSIG MAX / CLASS IV / 650 PSIG			
CONSTRUCTION METHOD	OPEN CUT / OC-10	OPEN CUT / OC-11	OPEN CUT / OC-12	HDD			
PIPE							
FITTINGS							

HORIZONTAL STATIONING	STA. 80+21 6" WATER MAIN	STA. 80+54 15" STORM SEWER	STA. 81+08 42" STORM SEWER	STA. 81+66 30" STORM SEWER	STA. 82+88 TR OVERHEAD POWER	STA. 82+98 UNKNOWN UTILITY	STA. 83+64 TR OVERHEAD POWER	STA. 83+66 UNKNOWN UTILITY	STA. 83+84 12" STORM SEWER	STA. 84+84 WATER SERVICE LINE	STA. 84+85 WATER SERVICE LINE	STA. 85+11 24" SANITARY SEWER	STA. 85+16 OVERHEAD POWER	STA. 85+36 24" x 10" REDUCING TEE	STA. 85+67 24" TRANSITION PIECE	STA. 85+69 HDD ENTRY POINT	STA. 85+70 24" INSULATING JOINT	STA. 85+70 TEST STATION	STA. 85+73 24" TRANSITION PIECE	STA. 86+45 12" STORM SEWER	STA. 88+45 2" GAS MAIN	STA. 88+56 6" SANITARY SEWER	STA. 88+61 20" WATER MAIN	STA. 88+71 OVERHEAD POWER	STA. 89+77 24" GAS MAIN
-----------------------	-----------------------------	-------------------------------	-------------------------------	-------------------------------	---------------------------------	-------------------------------	---------------------------------	-------------------------------	-------------------------------	----------------------------------	----------------------------------	----------------------------------	------------------------------	--------------------------------------	------------------------------------	-------------------------------	------------------------------------	----------------------------	------------------------------------	-------------------------------	---------------------------	---------------------------------	------------------------------	------------------------------	----------------------------



- NOTES:
- CONTRACTOR SHALL EXPOSE AND VERIFY ALL UTILITY CROSSINGS.
  - SEE GENERAL NOTES FOR CLEARANCE REQUIREMENTS.
  - SEE TD-01 TO TD-03 FOR OPEN CUT DETAILS.
  - SERVICE LINE CROSSINGS SHOWN IN SURVEY ARE NOT STATIONED OR SHOWN IN PROFILE FOR CLARITY.
  - THE PIPELINE HAS GENERALLY BEEN DESIGNED WITH A COVER OF 6'-0" TO ACCOUNT FOR THE DEPTH OF UNKNOWN SERVICE LINES. MINIMUM ALLOWABLE DEPTH OF COVER IS 4'-0".
  - VERTICAL BENDS CALLED OUT IN PROFILE ARE FOR REFERENCE. CONTRACTOR TO MAKE USE OF ROPING AND FIELD BENDS WHERE POSSIBLE. REFER TO GS 3010.030 FOR FURTHER DETAILS.
  - CORROSION PROTECTION IS DESIGNED BY NISOURCE AND IS NOT COVERED WITHIN THE ENGINEER'S STAMP.
  - AERIAL IMAGERY IS FOR REFERENCE ONLY.
  - FITTING EXTENTS SHOWN IN THE PROFILE ARE FOR REFERENCE ONLY. REFER TO STATIONING BAND FOR LOCATIONS OF ANTICIPATED FITTINGS. A 3X DIAMETER OF STRAIGHT PIPE IS REQUIRED BETWEEN ALL FITTINGS. REFER TO GS 2110.020 FOR FURTHER DETAILS.
  - UTILITY FOUND DURING GROUND PENETRATING RADAR (GPR) SURVEY. UTILITY TYPE AND DIAMETER ARE UNKNOWN.
  - CONTRACTOR TO MAINTAIN NOISE LEVEL WITHIN ALLOTTED DECIBEL RANGE THROUGHOUT CONSTRUCTION. REFER TO GAHANNA MUNICIPAL CODE 559.02 AND 559.03.A.10.B



**CAMPOS EPC**  
 274 Marconi Blvd, Suite 130  
 Columbus, OH 43215  
 (380) 799-8503  
**PROPOSED**

REVISIONS			
REV. #	DATE	DESCRIPTION	
B	05/08/26	ISSUED FOR 2027 CONSTRUCTION	
A	12/23/24	ISSUED FOR PERMIT	
INTERNAL ENG.	AD	10/08/25	800-344-4077
DESIGNED BY	JMJ	10/08/25	855-266-7671
CHECKED BY	SW	10/08/25	855-266-7671
AS-BUILT BY	TBD	TBD	TBD
	NAME	DATE	PHONE #

SITE NAME:  
**WO# 4000097527**  
**MAT MAI**  
**WBS L2 ANC34.0001.00035**  
 AGLER ROAD NCHP PIPELINE PROJECT  
 COLUMBUS/GAHANNA, FRANKLIN COUNTY, OH

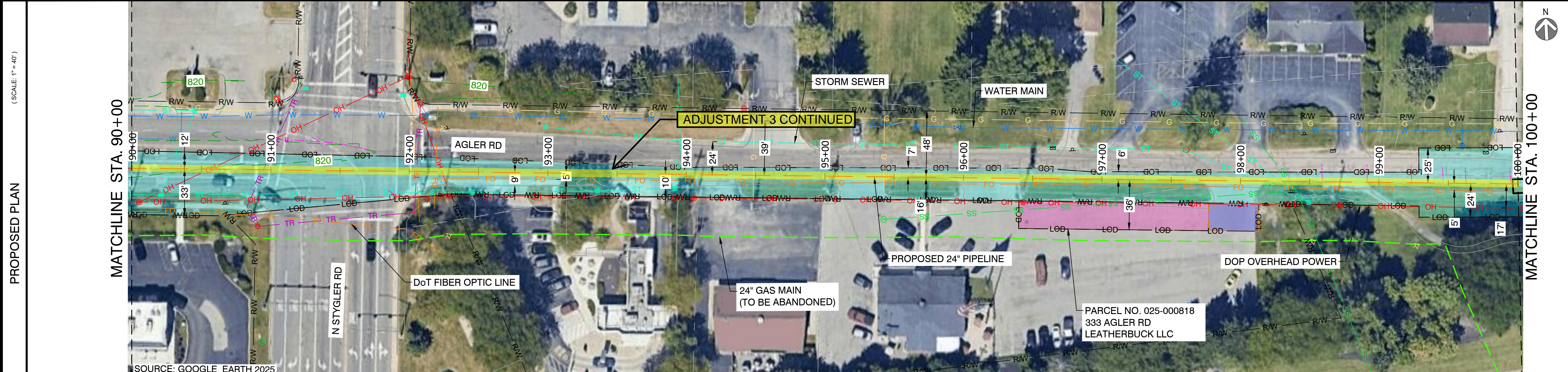
DRAWING TITLE:  
**24" CITYGATE TO US-62 ALIGNMENT**  
**STA. 80+00 TO STA. 90+00**

DRAWING NO:  
**L-2017**

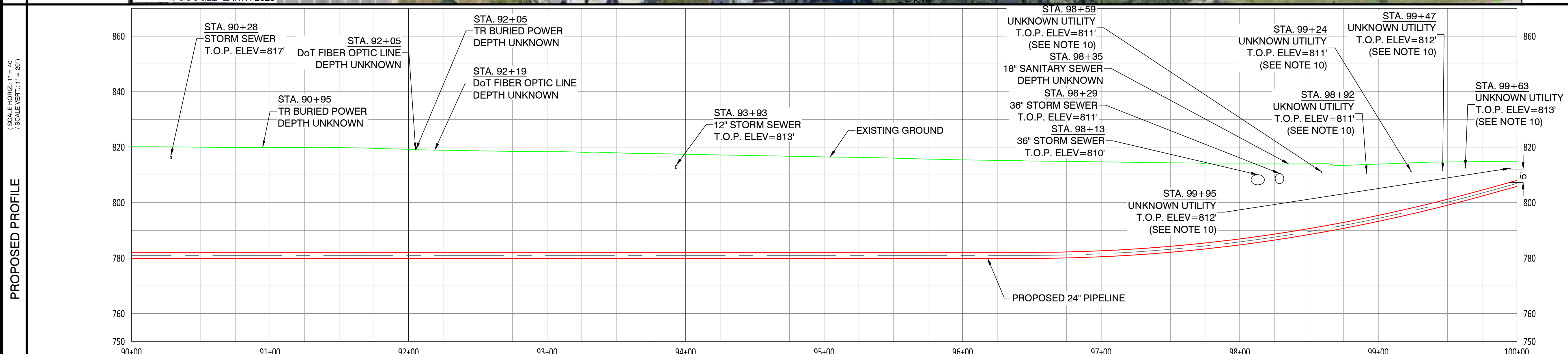
OWNERSHIP / PERMIT	CITY OF GAHANNA / EUFR-26-31 (PHASE 2)
JURISDICTION / PARCEL ID	CITY OF GAHANNA / FRANKLIN COUNTY
TEST PRESSURE / DESIGN INFO	1080 PSIG MIN / 1280 PSIG MAX / CLASS IV / 650 PSIG
CONSTRUCTION METHOD	HDD
PIPE	
FITTINGS	



HORIZONTAL STATIONING	STA. 90+28 STORM SEWER	STA. 90+56 OVERHEAD POWER	STA. 90+95 TR BURIED POWER	STA. 92+05 DOT FIBER OPTIC LINE	STA. 92+05 TR BURIED POWER	STA. 92+19 DOT FIBER OPTIC LINE	STA. 92+24 OVERHEAD POWER	STA. 93+93 12" STORM SEWER	STA. 98+13 36" STORM SEWER	STA. 98+29 36" STORM SEWER	STA. 98+35 18" SANITARY SEWER	STA. 98+59 UNKNOWN UTILITY	STA. 98+92 UNKNOWN UTILITY	STA. 99+24 UNKNOWN UTILITY	STA. 99+47 UNKNOWN UTILITY	STA. 99+63 UNKNOWN UTILITY	STA. 99+95 UNKNOWN UTILITY
-----------------------	------------------------	---------------------------	----------------------------	---------------------------------	----------------------------	---------------------------------	---------------------------	----------------------------	----------------------------	----------------------------	-------------------------------	----------------------------	----------------------------	----------------------------	----------------------------	----------------------------	----------------------------



**CAMPOS EPC**  
 274 Marconi Blvd, Suite 130  
 Columbus, OH 43215  
 (380) 799-8503  
**PROPOSED**



REVISIONS		
REV. #	DATE	DESCRIPTION
B	05/08/26	ISSUED FOR 2027 CONSTRUCTION
A	12/23/24	ISSUED FOR PERMIT

INTERNAL ENG.	AD	10/08/25	800-344-4077
DESIGNED BY	JMJ	10/08/25	855-266-7671
CHECKED BY	SW	10/08/25	855-266-7671
AS-BUILT BY	TBD	TBD	TBD
	NAME	DATE	PHONE #

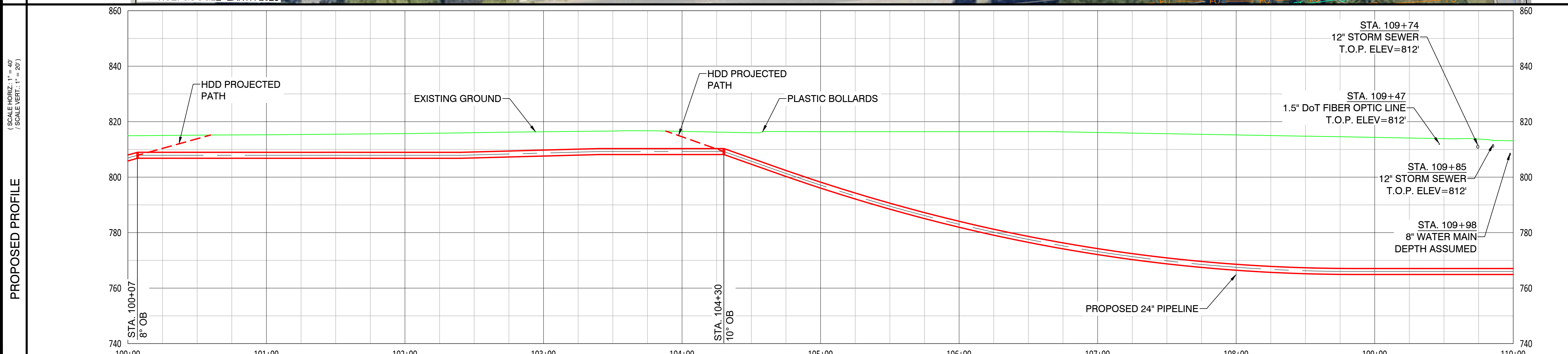
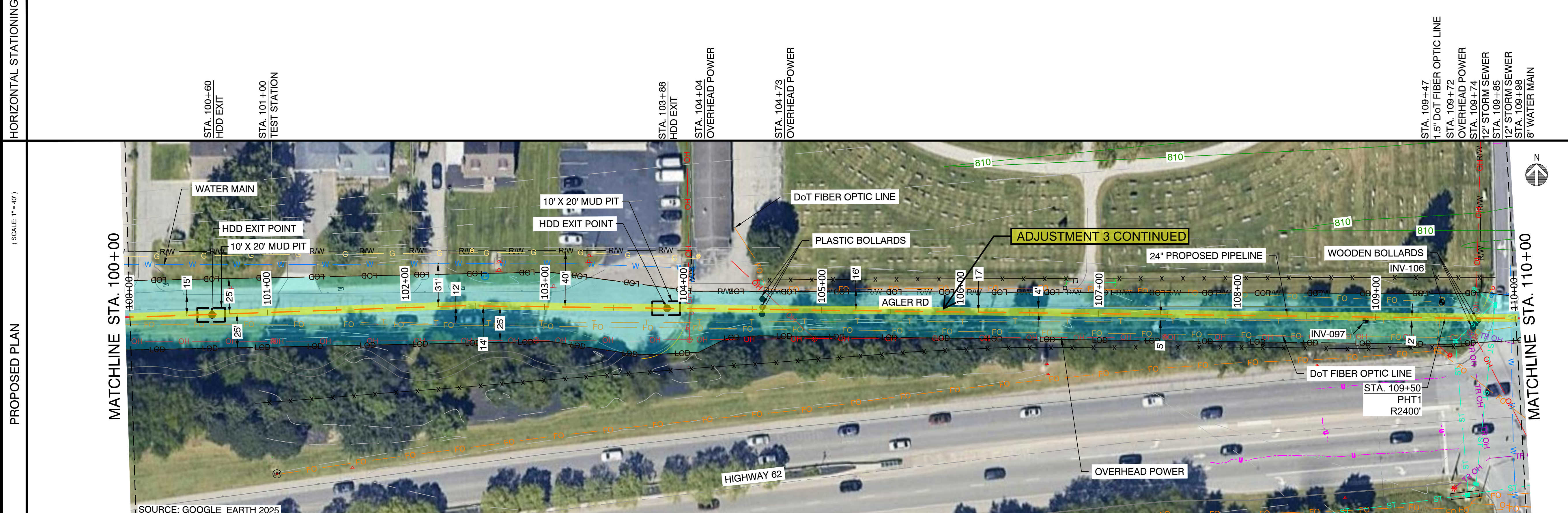
**SITE NAME:**  
**WO# 4000097527**  
**MAT MAI**  
**WBS L2 ANC34.0001.00035**  
 AGLER ROAD NCHP PIPELINE PROJECT  
 COLUMBUS/GAHANNA, FRANKLIN COUNTY, OH

**DRAWING TITLE:**  
 24" CITYGATE TO JAMES ALIGNMENT  
 STA. 90+00 TO STA. 100+00

**DRAWING NO:**  
**L-2018**

- NOTES:**
- CONTRACTOR SHALL EXPOSE AND VERIFY ALL UTILITY CROSSINGS.
  - SEE GENERAL NOTES FOR CLEARANCE REQUIREMENTS.
  - SEE TD-01 TO TD-03 FOR OPEN CUT DETAILS.
  - SERVICE LINE CROSSINGS SHOWN IN SURVEY ARE NOT STATIONED OR SHOWN IN PROFILE FOR CLARITY.
  - THE PIPELINE HAS GENERALLY BEEN DESIGNED WITH A COVER OF 6'-0" TO ACCOUNT FOR THE DEPTH OF UNKNOWN SERVICE LINES. MINIMUM ALLOWABLE DEPTH OF COVER IS 4'-0".
  - VERTICAL BENDS CALLED OUT IN PROFILE ARE FOR REFERENCE. CONTRACTOR TO MAKE USE OF ROPING AND FIELD BENDS WHERE POSSIBLE. REFER TO GS 3010.030 FOR FURTHER DETAILS.
  - CORROSION PROTECTION IS DESIGNED BY NISOURCE AND IS NOT COVERED WITHIN THE ENGINEER'S STAMP.
  - AERIAL IMAGERY IS FOR REFERENCE ONLY.
  - FITTING EXTENTS SHOWN IN THE PROFILE ARE FOR REFERENCE ONLY. REFER TO STATIONING BAND FOR LOCATIONS OF ANTICIPATED FITTINGS. A 3X DIAMETER OF STRAIGHT PIPE IS REQUIRED BETWEEN ALL FITTINGS. REFER TO GS 2110.020 FOR FURTHER DETAILS.
  - UTILITY FOUND DURING GROUND PENETRATING RADAR (GPR) SURVEY. UTILITY TYPE AND DIAMETER ARE UNKNOWN.
  - CONTRACTOR TO MAINTAIN NOISE LEVEL WITHIN ALLOTTED DECIBEL RANGE THROUGHOUT CONSTRUCTION. REFER TO GAHANNA MUNICIPAL CODE 559.02 AND 559.03.A.10.B.

OWNERSHIP / PERMIT	CITY OF GAHANNA / EUFR-26-31 (PHASE 2)		
JURISDICTION / PARCEL ID	CITY OF GAHANNA / FRANKLIN COUNTY		
TEST PRESSURE / DESIGN INFO	1080 PSIG MIN / 1280 PSIG MAX / CLASS IV / 650 PSIG		
CONSTRUCTION METHOD	HDD	OPEN CUT / OC-13	OPEN CUT / OC-14
PIPE	HDD		
FITTINGS			



**CAMPOS EPC**  
 274 Marconi Blvd, Suite 130  
 Columbus, OH 43215  
 (380) 799-8503  
**PROPOSED**

REVISIONS		
REV. #	DATE	DESCRIPTION
B	05/08/26	ISSUED FOR 2027 CONSTRUCTION
A	12/23/24	ISSUED FOR PERMIT

INTERNAL ENG.	AD	10/08/25	800-344-4077
DESIGNED BY	JEM	10/08/25	855-226-7671
CHECKED BY	JC	10/08/25	855-226-7671
AS-BUILT BY	TBD	TBD	TBD
	NAME	DATE	PHONE #

SITE NAME:  
**WO# 4000097527**  
**MAT MAI**  
**WBS L2 ANC34.0001.00035**  
 AGLER ROAD NCHP PIPELINE PROJECT  
 COLUMBUS/GAHANNA, FRANKLIN COUNTY, OH

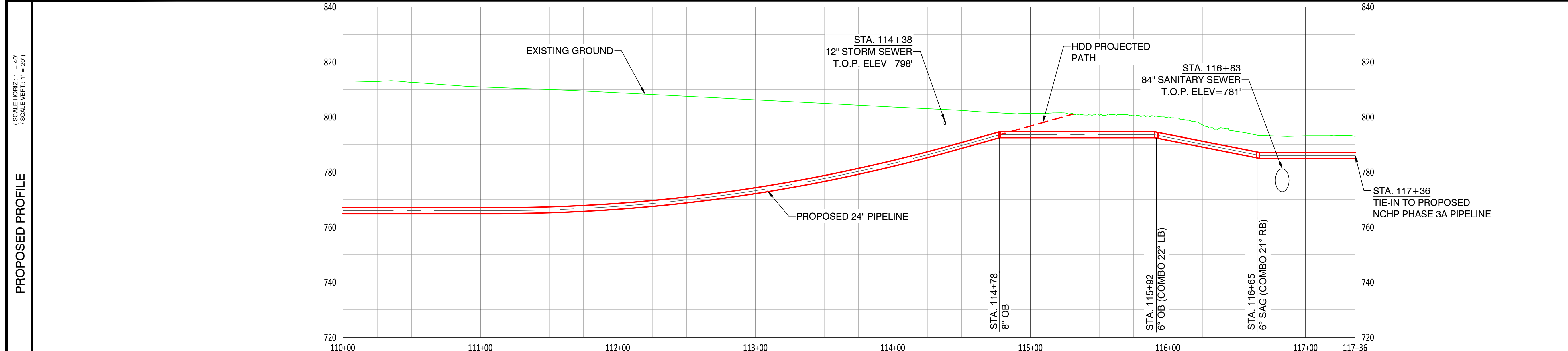
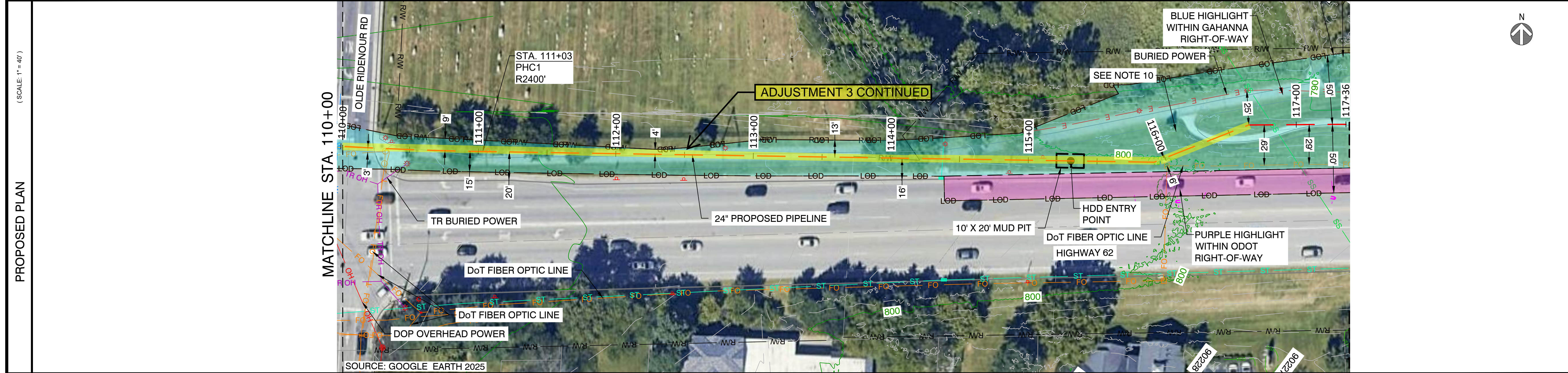
DRAWING TITLE:  
**24" CITYGATE TO US-62 ALIGNMENT**  
 STA. 100+00 TO STA. 110+00

DRAWING NO:  
**L-2019**

- NOTES:
- CONTRACTOR SHALL EXPOSE AND VERIFY ALL UTILITY CROSSINGS. SEE GENERAL NOTES FOR CLEARANCE REQUIREMENTS.
  - SEE TD-01 TO TD-03 FOR OPEN CUT DETAILS.
  - SERVICE LINE CROSSINGS SHOWN IN SURVEY ARE NOT STATIONED OR SHOWN IN PROFILE FOR CLARITY.
  - THE PIPELINE HAS GENERALLY BEEN DESIGNED WITH A COVER OF 6'-0" TO ACCOUNT FOR THE DEPTH OF UNKNOWN SERVICE LINES. MINIMUM ALLOWABLE DEPTH OF COVER IS 4'-0".
  - VERTICAL BENDS CALLED OUT IN PROFILE ARE FOR REFERENCE. CONTRACTOR TO MAKE USE OF ROPING AND FIELD BENDS WHERE POSSIBLE. REFER TO GS 3010.030 FOR FURTHER DETAILS.
  - CORROSION PROTECTION IS DESIGNED BY NISOURCE AND IS NOT COVERED WITHIN THE ENGINEER'S STAMP.
  - AERIAL IMAGERY IS FOR REFERENCE ONLY.
  - FITTING EXTENTS SHOWN IN THE PROFILE ARE FOR REFERENCE ONLY. REFER TO STATIONING BAND FOR LOCATIONS OF ANTICIPATED FITTINGS. A 3X DIAMETER OF STRAIGHT PIPE IS REQUIRED BETWEEN ALL FITTINGS. REFER TO GS 2110.020 FOR FURTHER DETAILS.
  - CONTRACTOR TO MAINTAIN NOISE LEVEL WITHIN ALLOTTED DECIBEL RANGE THROUGHOUT CONSTRUCTION. REFER TO GAHANNA MUNICIPAL CODE 559.02 AND 559.03.A.10.B.

OWNERSHIP / PERMIT	CITY OF GAHANNA / EUFR-26-31 (PHASE 2)		STA. 110+00	STA. 117+36
JURISDICTION / PARCEL ID	CITY OF GAHANNA / FRANKLIN COUNTY			
TEST PRESSURE / DESIGN INFO	1080 PSIG MIN / 1280 PSIG MAX / CLASS IV / 650 PSIG			
CONSTRUCTION METHOD	HDD	OPEN CUT / VARIES		
PIPE				
FITTINGS				

HORIZONTAL STATIONING	STA. 114+38	STA. 115+31	STA. 116+65
	12" STORM SEWER	HDD ENTRY STA. 115+47 24" TRANSITION PIECE STA. 115+50 24" INSULATING JOINT STA. 115+60 GEROME HEAD W/ GEROME POST STA. 115+53 24" TRANSITION PIECE STA. 115+92 22" LB (COMBO 6" OB)	STA. 116+83 21" RB (COMBO 6" SAG) STA. 116+83 84" SANITARY SEWER



- NOTES:
- CONTRACTOR SHALL EXPOSE AND VERIFY ALL UTILITY CROSSINGS.
  - SEE GENERAL NOTES FOR CLEARANCE REQUIREMENTS.
  - SEE TD-01 TO TD-03 FOR OPEN CUT DETAILS.
  - SERVICE LINE CROSSINGS SHOWN IN SURVEY ARE NOT STATIONED OR SHOWN IN PROFILE FOR CLARITY.
  - THE PIPELINE HAS GENERALLY BEEN DESIGNED WITH A COVER OF 6'-0" TO ACCOUNT FOR THE DEPTH OF UNKNOWN SERVICE LINES. MINIMUM ALLOWABLE DEPTH OF COVER IS 4'-0".
  - VERTICAL BENDS CALLED OUT IN PROFILE ARE FOR REFERENCE. CONTRACTOR TO MAKE USE OF ROPING AND FIELD BENDS WHERE POSSIBLE. REFER TO GS 3010.030 FOR FURTHER DETAILS.
  - CORROSION PROTECTION IS DESIGNED BY NISOURCE AND IS NOT COVERED WITHIN THE ENGINEER'S STAMP.
  - AERIAL IMAGERY IS FOR REFERENCE ONLY.
  - FITTING EXTENTS SHOWN IN THE PROFILE ARE FOR REFERENCE ONLY. REFER TO STATIONING BAND FOR LOCATIONS OF ANTICIPATED FITTINGS. A 3X DIAMETER OF STRAIGHT PIPE IS REQUIRED BETWEEN ALL FITTINGS. REFER TO GS 2110.020 FOR FURTHER DETAILS.
  - MEMORIAL AND TREE TO REMAIN UNDISRUPTED DURING CONSTRUCTION. CONTRACTOR TO MAKE USE OF SOCK FILTERS, SNOW FENCE, AND CONES AROUND THE MEMORIAL AND TREE TO PREVENT IMPACT.
  - CONTRACTOR TO MAINTAIN NOISE LEVEL WITHIN ALLOTTED DECIBEL RANGE THROUGHOUT CONSTRUCTION. REFER TO GAHANNA MUNICIPAL CODE 559.02 AND 559.03.A.10.B.



**CAMPOS EPC**  
 274 Marconi Blvd, Suite 130  
 Columbus, OH 43215  
 (380) 799-8503  
**PROPOSED**

REVISIONS		
REV. #	DATE	DESCRIPTION
B	05/08/26	ISSUED FOR 2027 CONSTRUCTION
A	12/23/24	ISSUED FOR PERMIT

INTERNAL ENG.	AD	10/08/25	800-344-4077
DESIGNED BY	JEM	10/08/25	855-226-7671
CHECKED BY	JC	10/08/25	855-226-7671
AS-BUILT BY	TBD	TBD	TBD
	NAME	DATE	PHONE #

SITE NAME:  
**WO# 4000097527**  
**MAT MAI**  
**WBS L2 ANC34.0001.00035**  
 AGLER ROAD NCHP PIPELINE PROJECT  
 COLUMBUS/GAHANNA, FRANKLIN COUNTY, OH

DRAWING TITLE:  
**24" CITYGATE TO US-62 ALIGNMENT**  
 STA. 110+00 TO STA. 117+36

DRAWING NO:  
**L-2020**